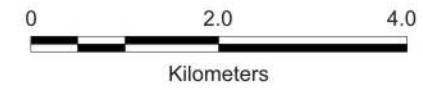
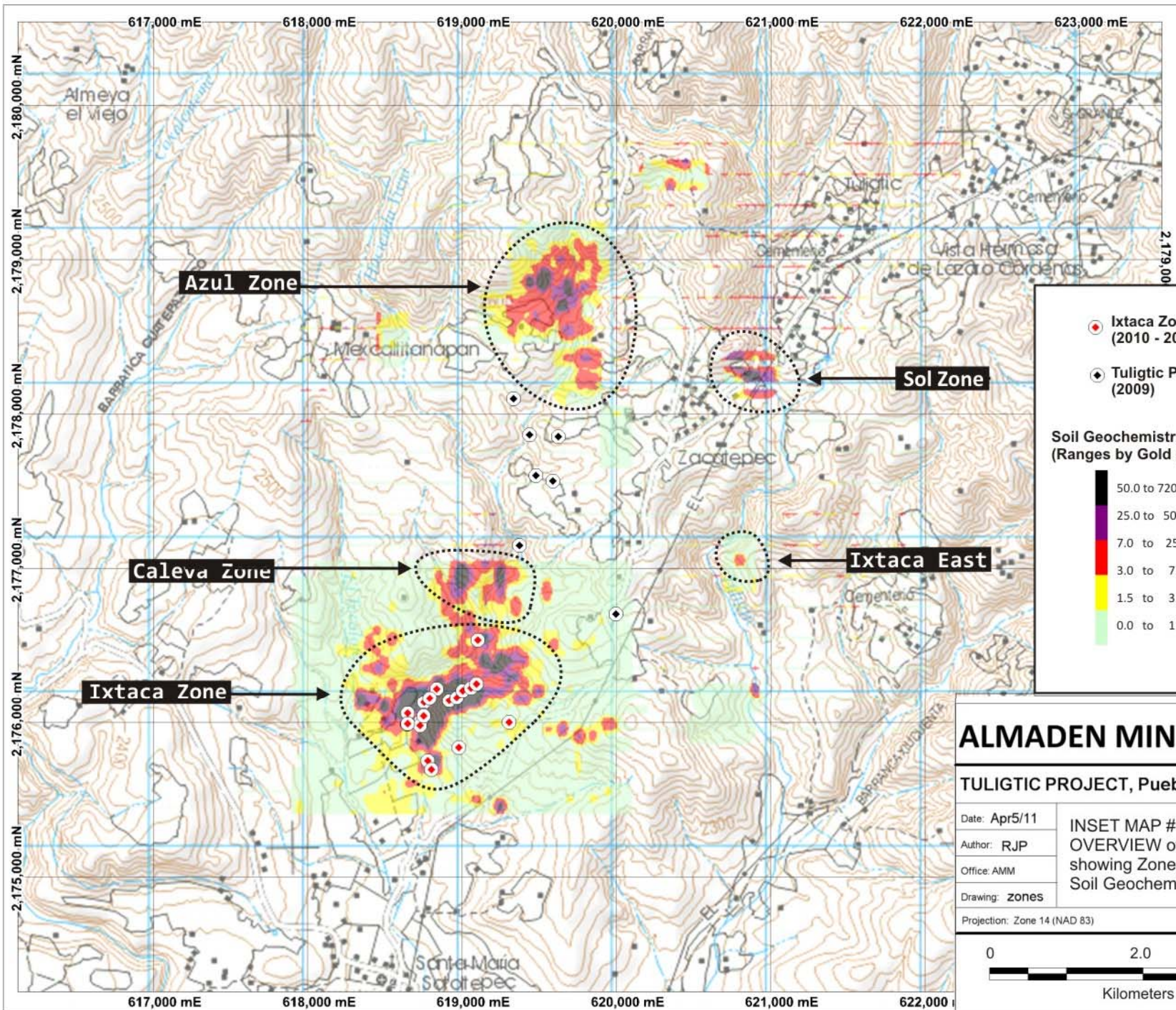


ALMADEN MINERALS LTD

TULIGTIC PROJECT, Puebla, Mexico

Date: Apr 5/11	OVERVIEW of the Tuligtic Project showing Zones and Soil Geochemistry
Author: RJP	
Office: AMM	
Drawing: overview	
Projection: Zone 14 (NAD 83)	





● Ixtaca Zone Drilling (2010 - 2011)
● Tuligtic Porphyry Drilling (2009)

Soil Geochemistry (Ranges by Gold ppb)

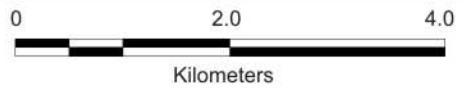
	50.0 to 720.0
	25.0 to 50.0
	7.0 to 25.0
	3.0 to 7.0
	1.5 to 3.0
	0.0 to 1.5

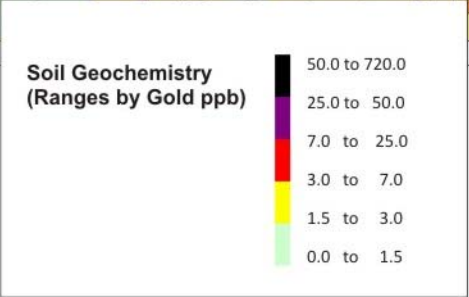
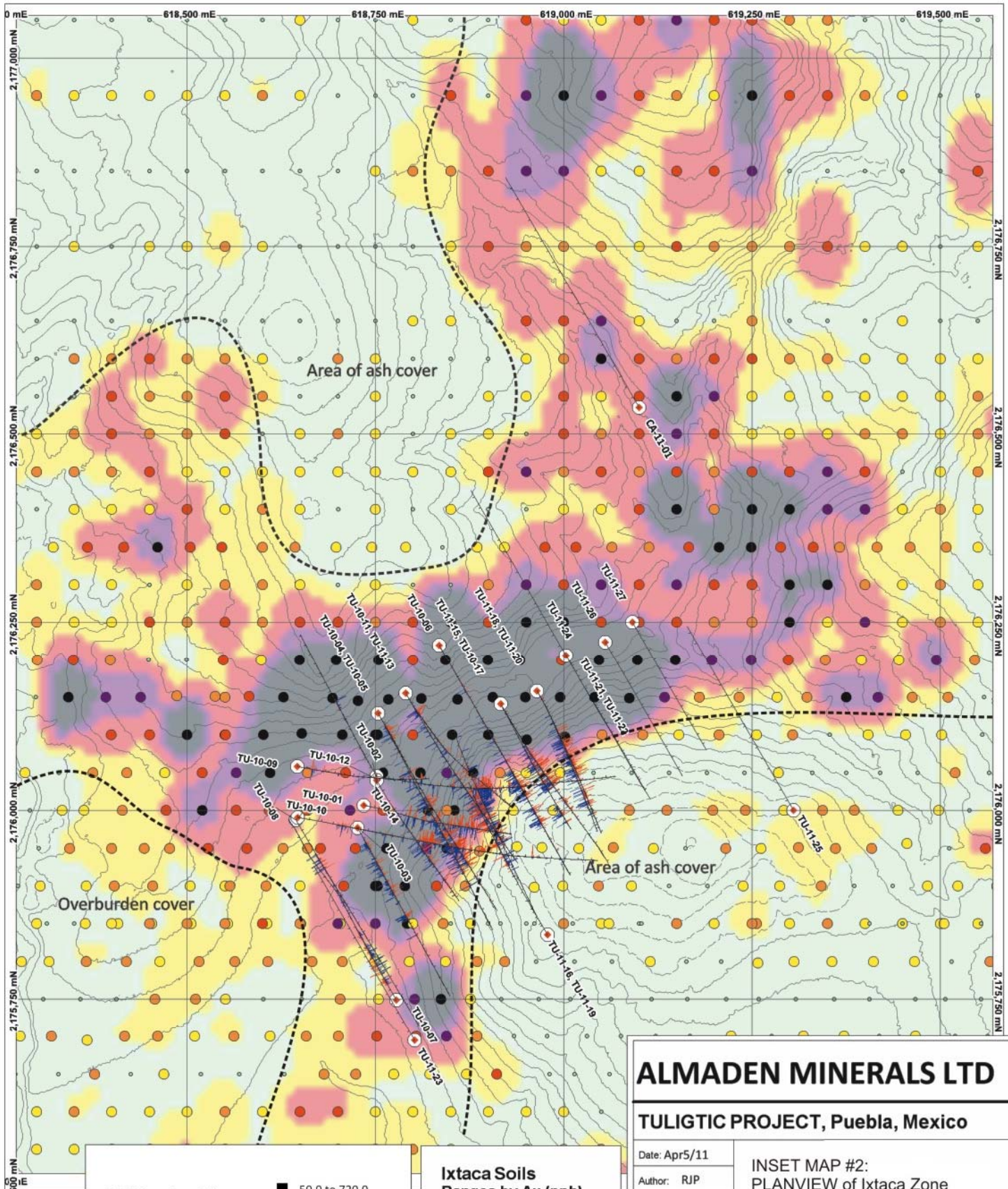
ALMADEN MINERALS LTD

TULIGTIC PROJECT, Puebla, Mexico

Date: Apr5/11	INSET MAP #1: OVERVIEW of Tuligtic Project showing Zones, Drilling, and Soil Geochemistry
Author: RJP	
Office: AMM	
Drawing: zones	

Projection: Zone 14 (NAD 83)





Ixtaca Soils
Ranges by Au (ppb)

● 50 to 720	(88)
● 25 to 50	(78)
● 7 to 25	(272)
● 3 to 7	(491)
● 1.5 to 3	(752)
● 0 to 1.5	(1318)

ALMADEN MINERALS LTD

TULIGTIC PROJECT, Puebla, Mexico

Date: Apr5/11	INSET MAP #2: PLANVIEW of Ixtaca Zone Drilling with Soil Geochemistry
Author: RJP	
Office: AMM	
Drawing: Planview	
Projection: Zone 14 (NAD 83)	
<p>0 200.0 meters</p>	