

Figure 4: Geologic Map of the Bajo Negro Area

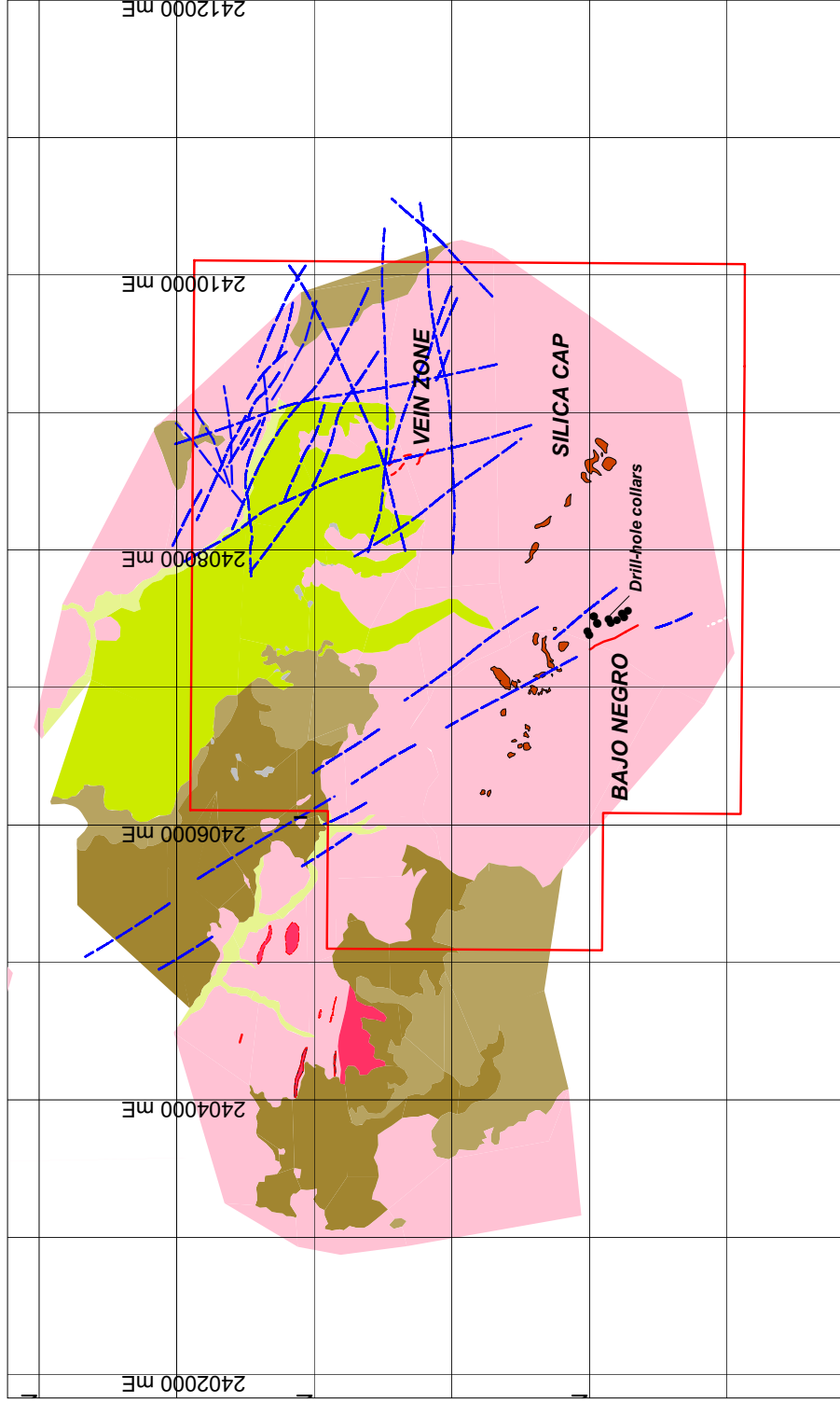


Figure 4: Geology and geophysics of the Bajo Negro-Vein Zone area. Pink is ignimbrites of the Chon Aike Formation, brown areas are gravel terraces and scree, yellow areas are Quaternary alluvial deposits. Red areas in western part of map are outcrops of the paleosurface with geothermal vents, red outcrops in Silica Cap and Bajo Negro areas are silicification. Red line at Bajo Negro is the Bajo Negro vein as exposed by trenching, blue lines are aeromagnetic lineaments.