

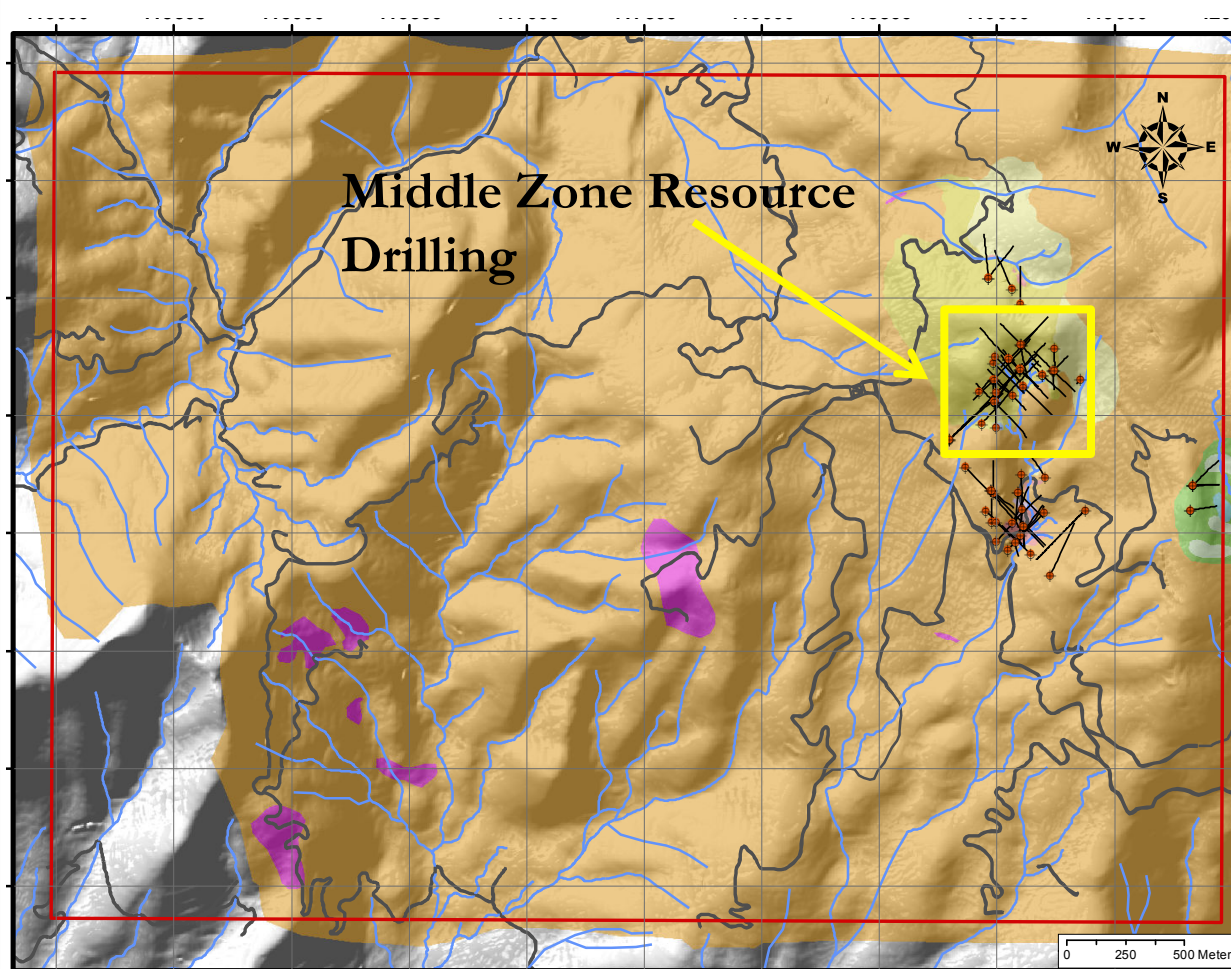


BELLHAVEN

TSX-V: BHV

# La Mina - Location & Geology

## Results Announced May 14, 2012

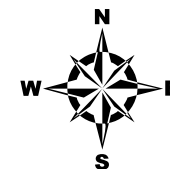


- 45km SW of Medellin
- Antioquia Department
- 1,794 Hectares
- <2,000m Elevation



**BELLHAVEN**  
Copper & Gold Inc

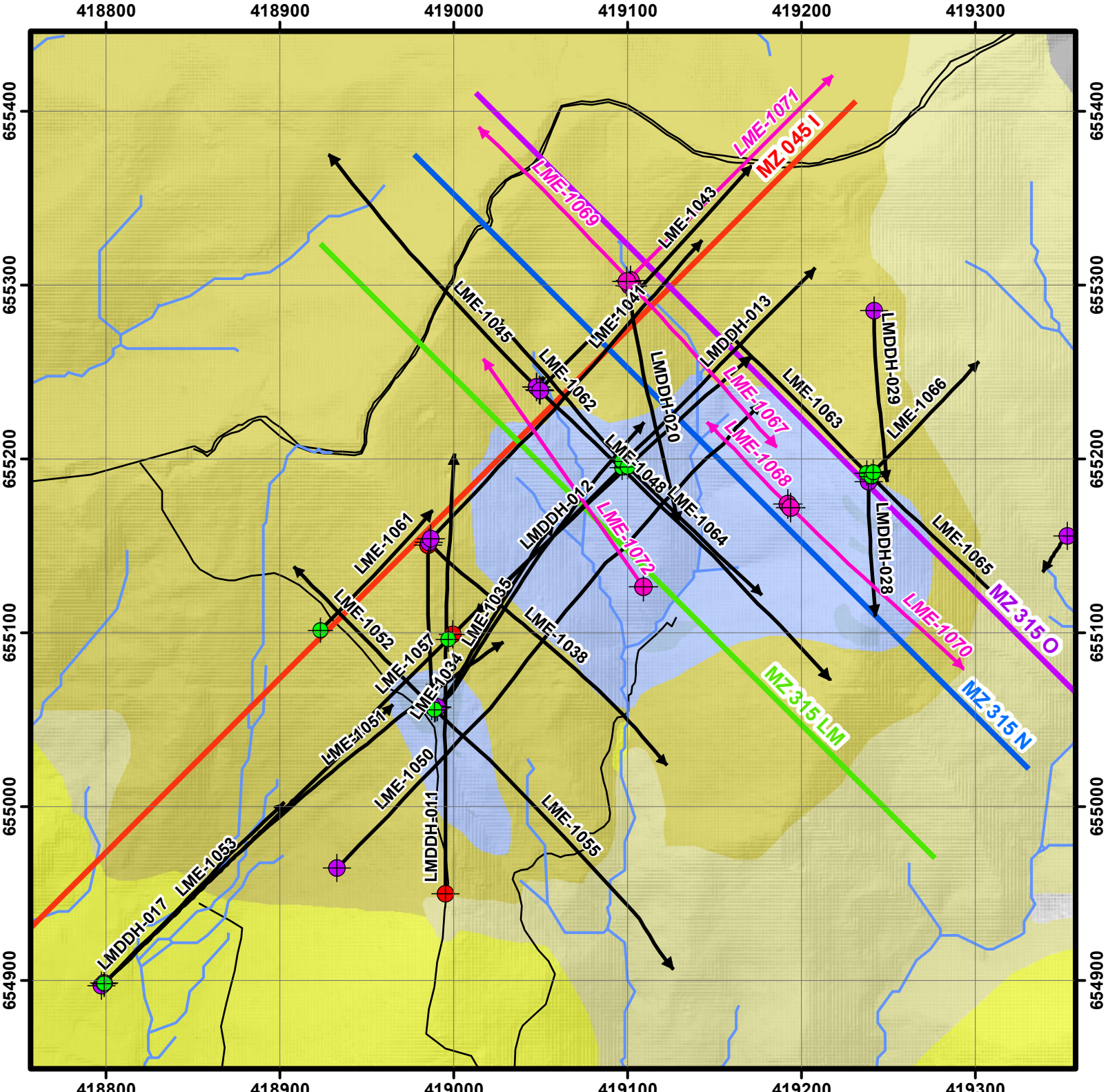
# Middle Zone Prospect



0 50 100  
Meters

### Legend

- |  |                   |  |                                 |
|--|-------------------|--|---------------------------------|
|  | Bellhaven (2010)  |  | <b>Litho Code</b><br>X3 Breccia |
|  | Bellhaven (2011)  |  | X3 Porphyry                     |
|  | Bellhaven (2012)  |  | L1 Breccia                      |
|  | Drill Hole PRs    |  | L1 Porphyry                     |
|  | Drill Trace       |  | Lithic Tuff                     |
|  | Drill Trace PRs   |  | Volcanic Rock                   |
|  | Section MZ 045 I  |  | Basalt                          |
|  | Section MZ 315 LM |  |                                 |
|  | Section MZ 315 N  |  |                                 |
|  | Section MZ 315 O  |  |                                 |
|  | Creek             |  |                                 |
|  | Road              |  |                                 |
|  | Path              |  |                                 |
|  | Trail             |  |                                 |



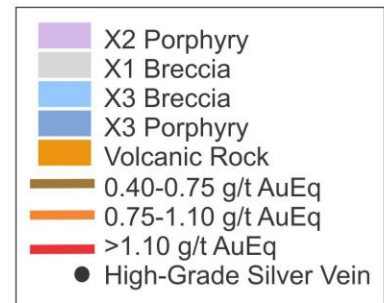
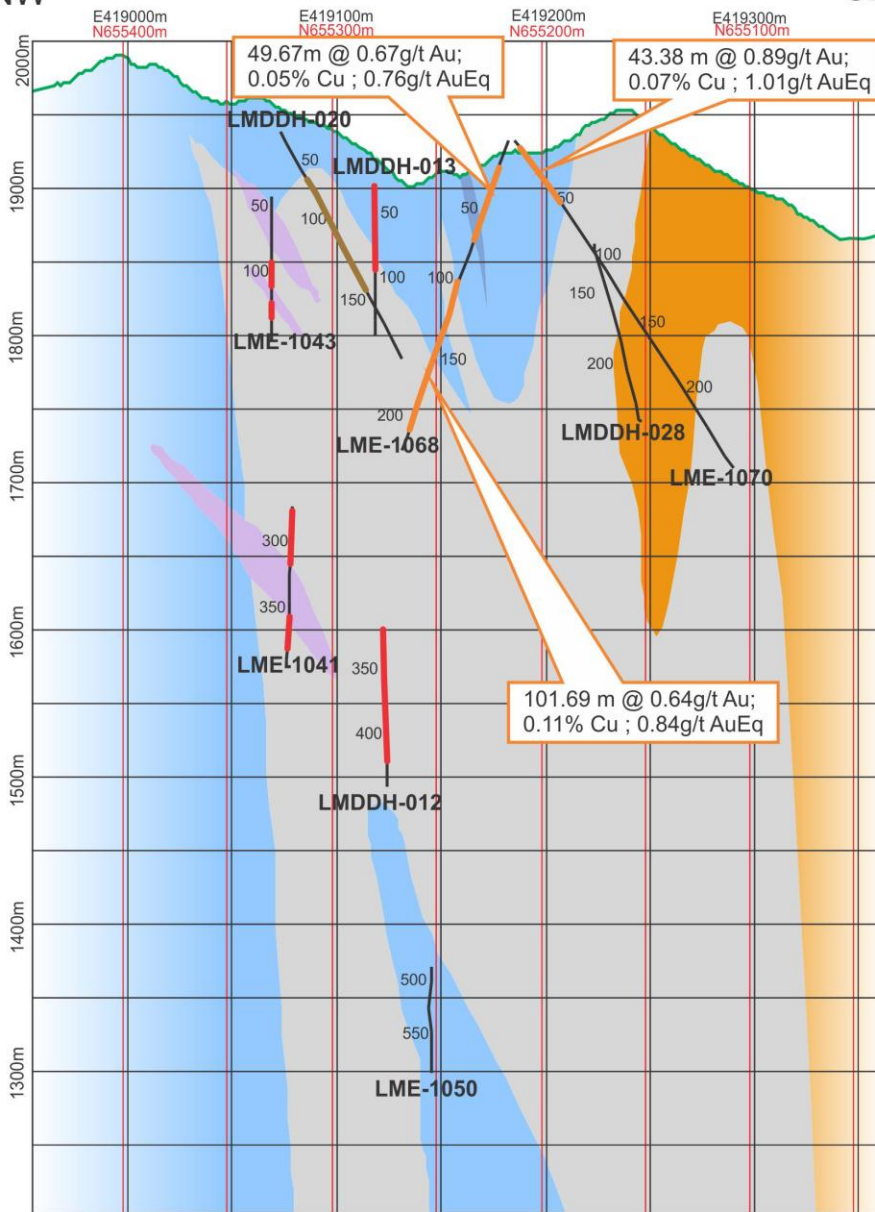
NW

SE



BELLHAVEN  
COPPER & GOLD INC.

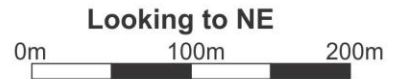
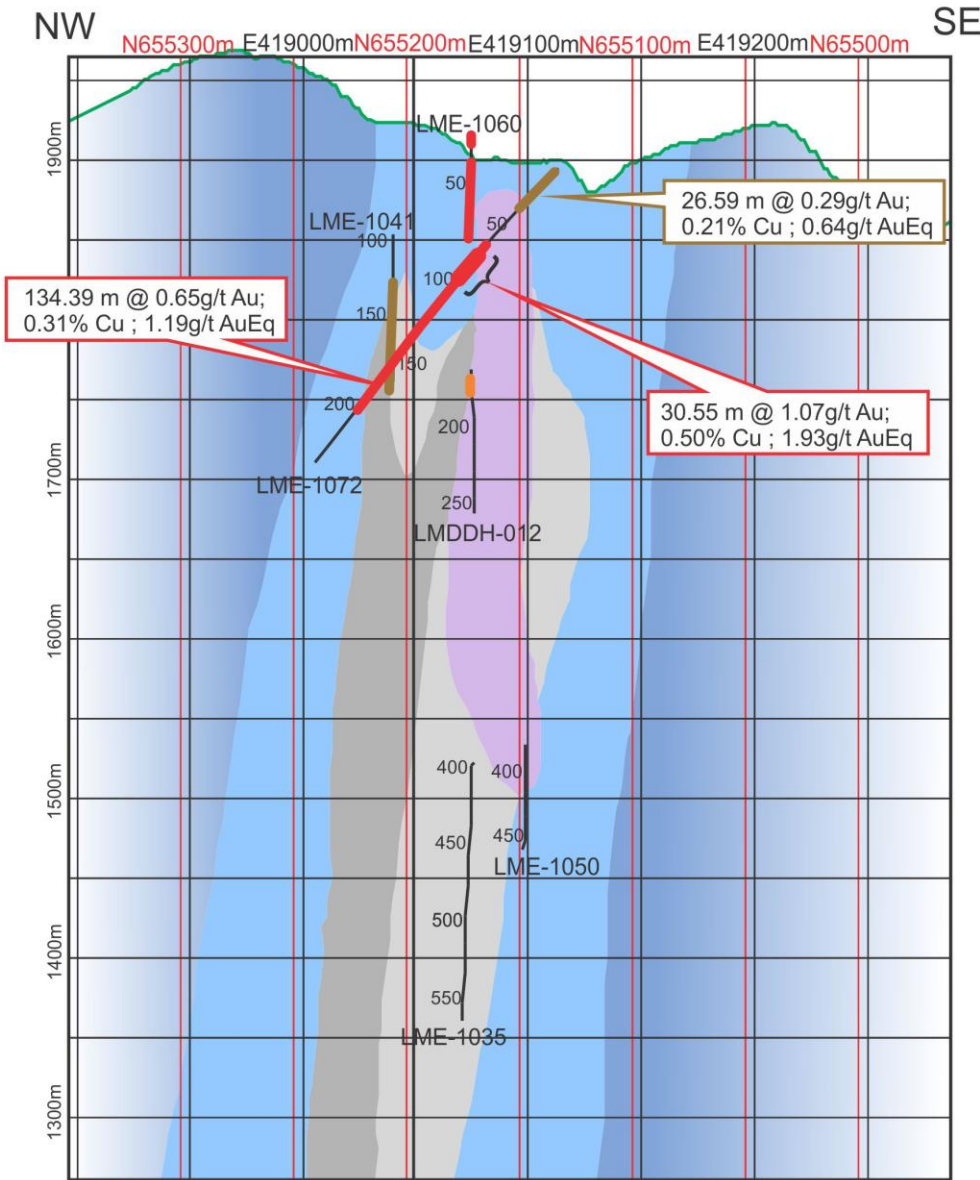
# Middle Zone Section MZ 315 N Lithology & Significant Drill Hole Intercepts





BELLHAVEN  
COPPER & GOLD INC.

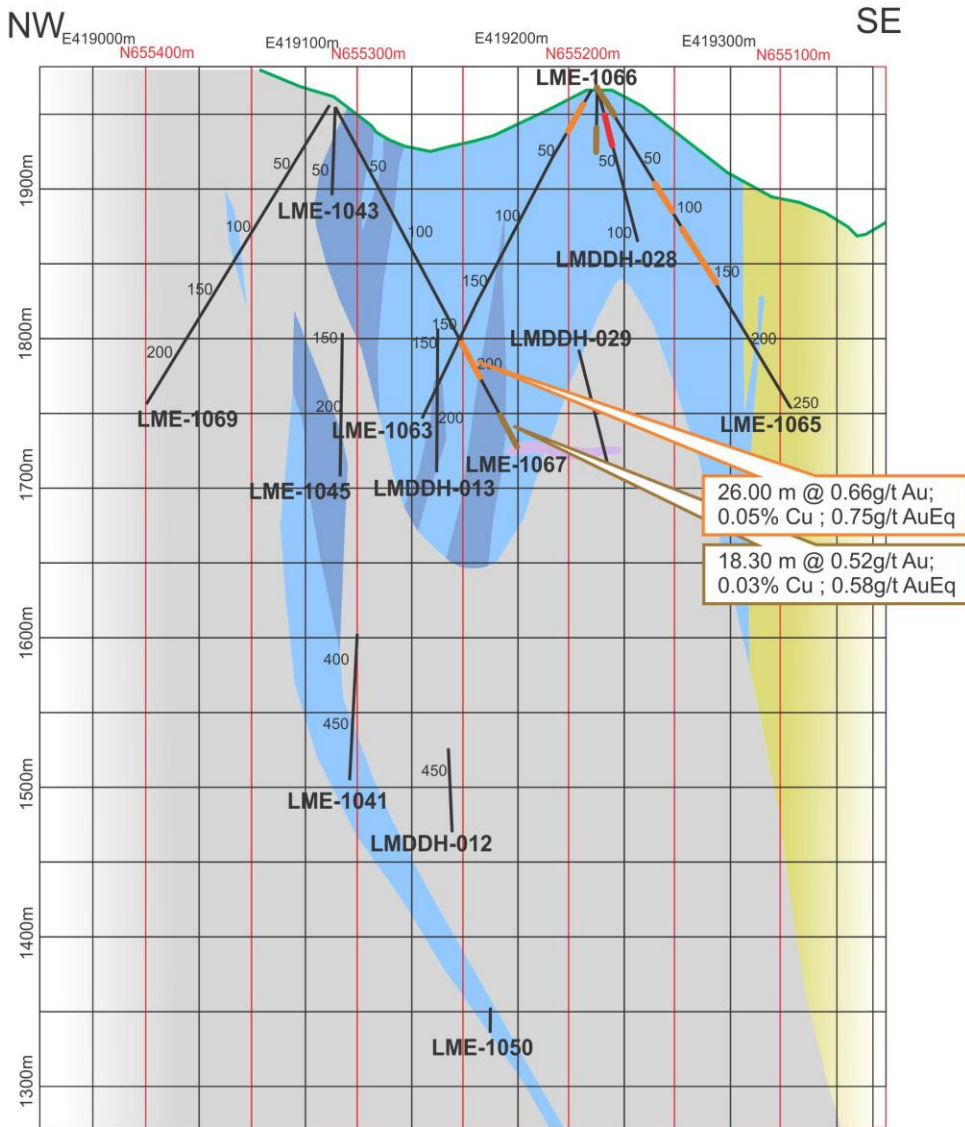
# Middle Zone Section MZ 315 L-M Lithology & Significant Drill Hole Intercepts

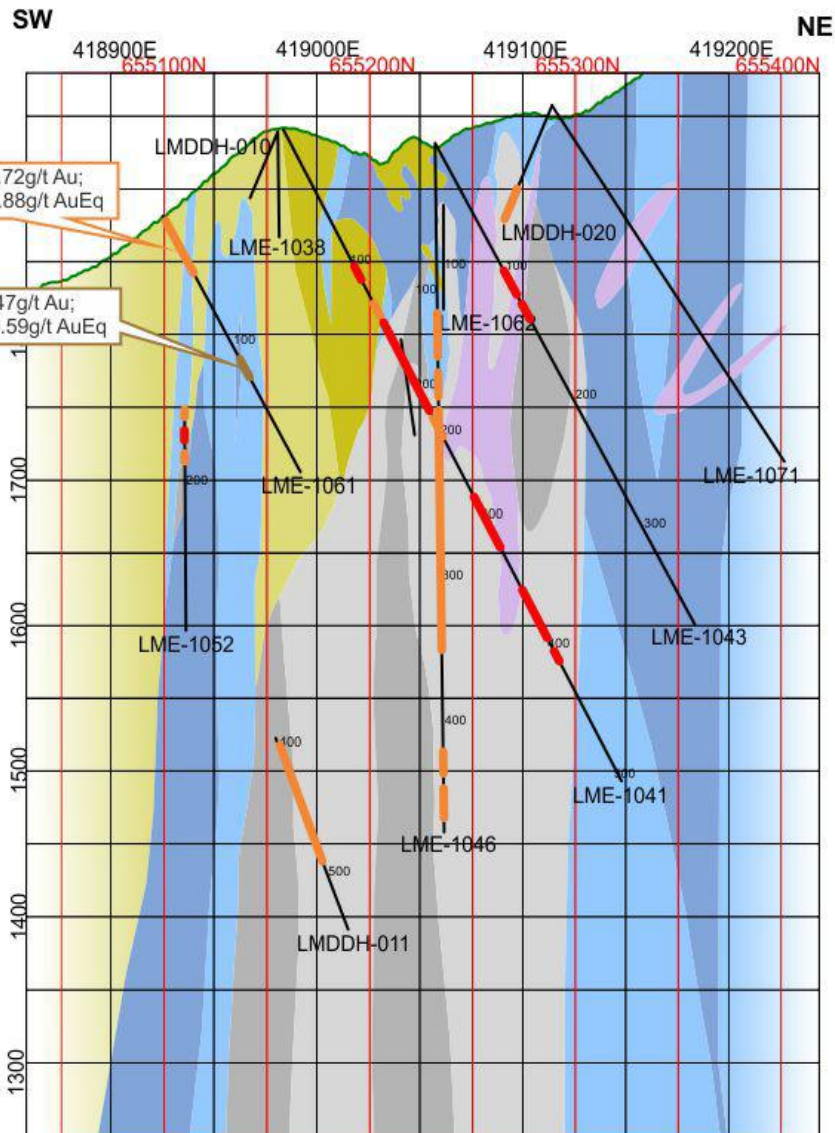




**BELLHAVEN**  
COPPER & GOLD INC.

## Middle Zone Section MZ 315 O Lithology & Significant Drill Hole Intercepts





BELLHAVEN  
COPPER & GOLD INC.

### Middle Zone Section MZ 045 I Lithology & Significant Drill Hole Intercepts

