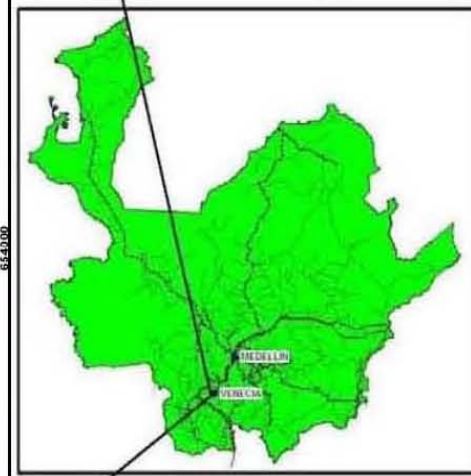
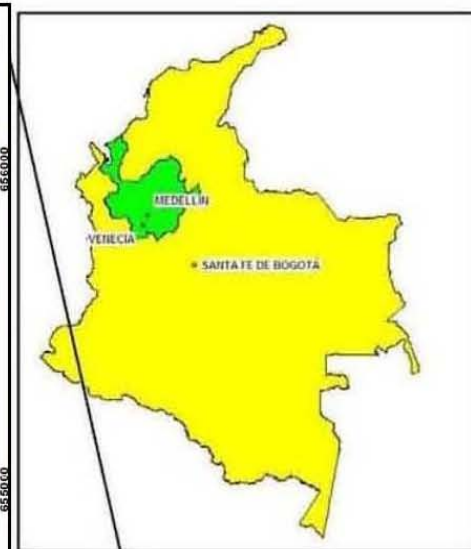
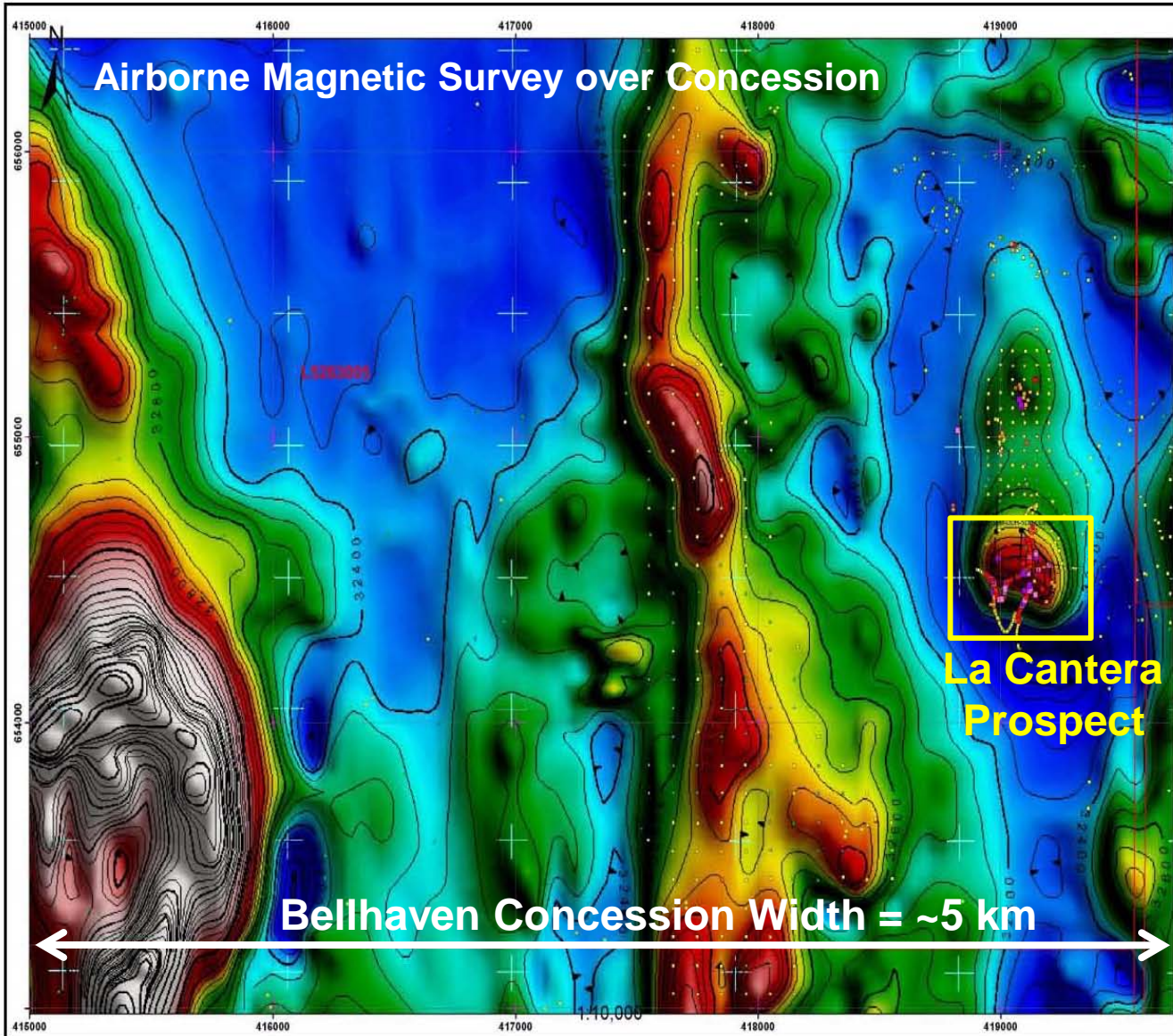




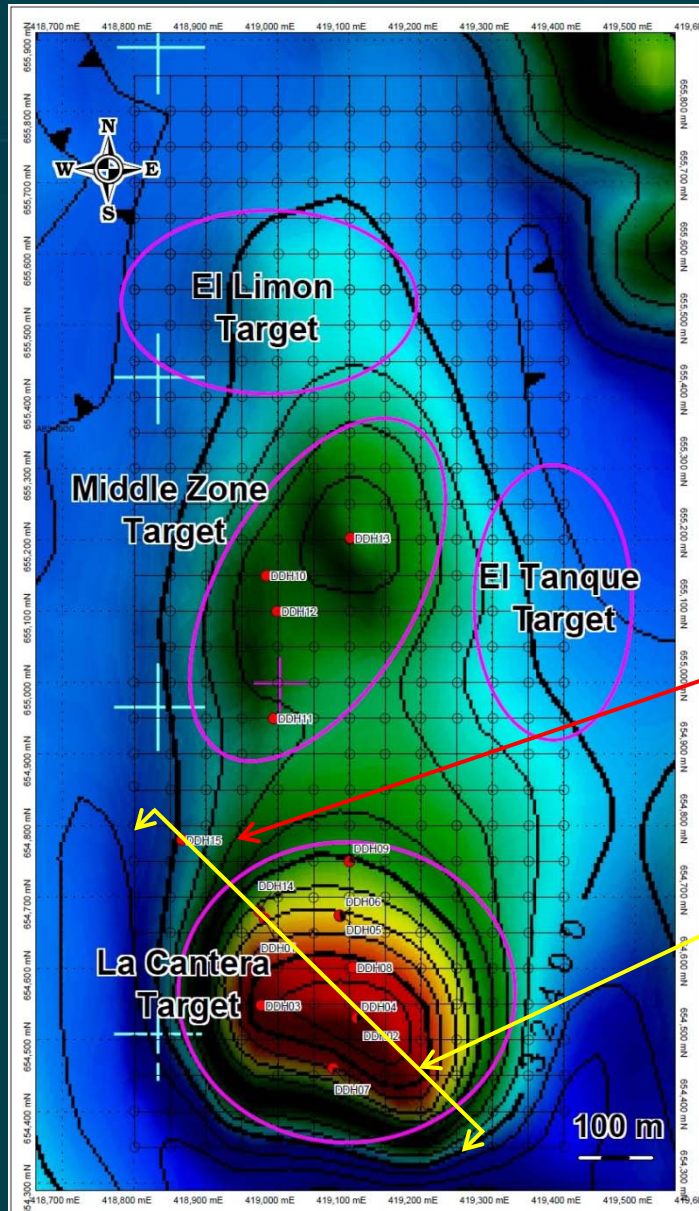
# La Mina—Location & Concession Maps



LOCATION MAP



# La Mina – Drill-Hole Location Map



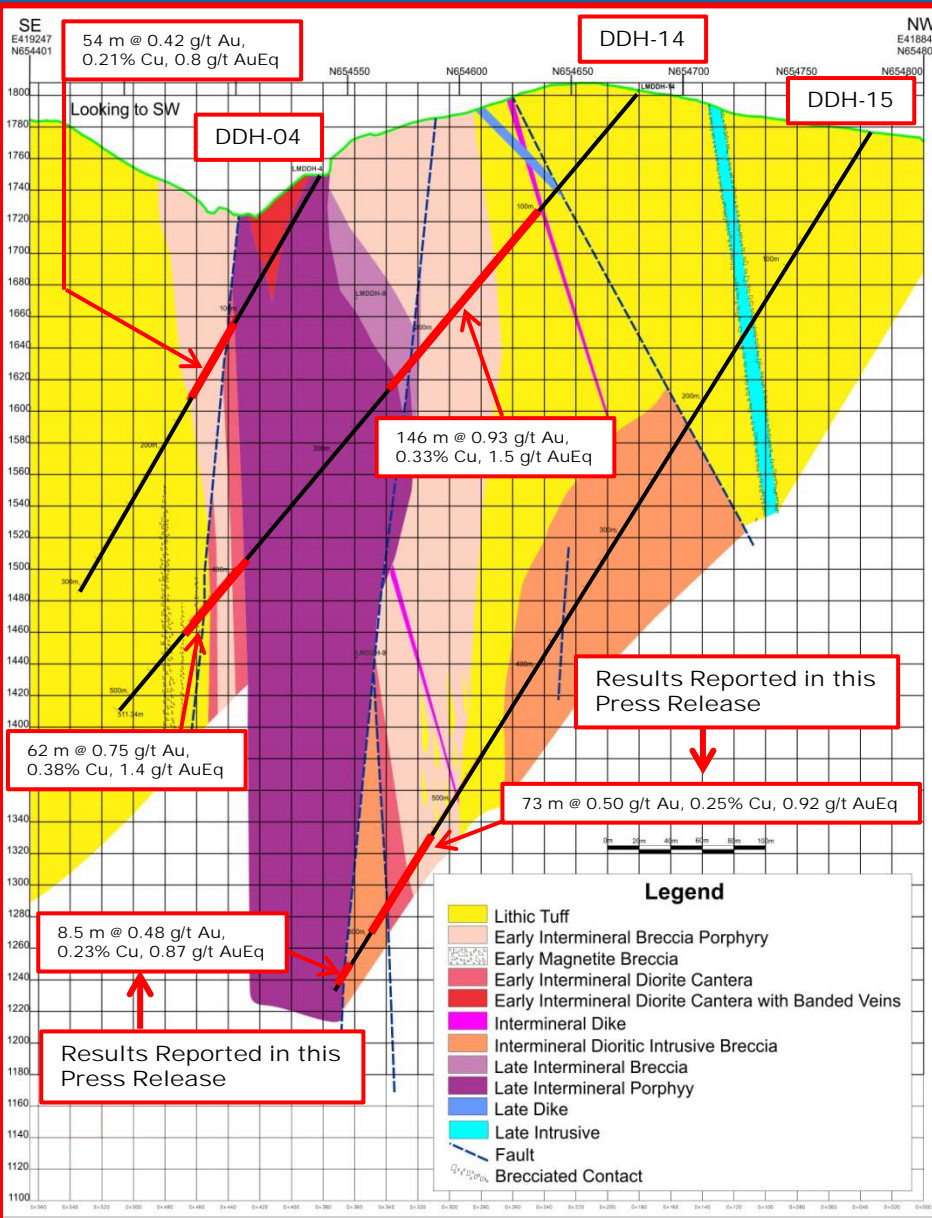
Airborne Magnetic Survey Map Showing the Locations of the Principal Prospects at La Mina and the 15 Drill Holes Completed to Date.

Location of DDH-15

Trace of Cross Section Over La Cantera Prospect (Cross Section Looking to SW). See Next Slide.



# La Mina – Cross Section (Looking to SW)



Cross section through the La Cantera prospect

Notes:

The two intercepts of DDH-15 extend known mineralization over 500 m (vertical) below the surface.

Gold-copper zones remain open to depth.

DDH-04 was drilled in 2006 by prior workers.  
DDH-14 and -15 were drilled in 2010 by Bellhaven.