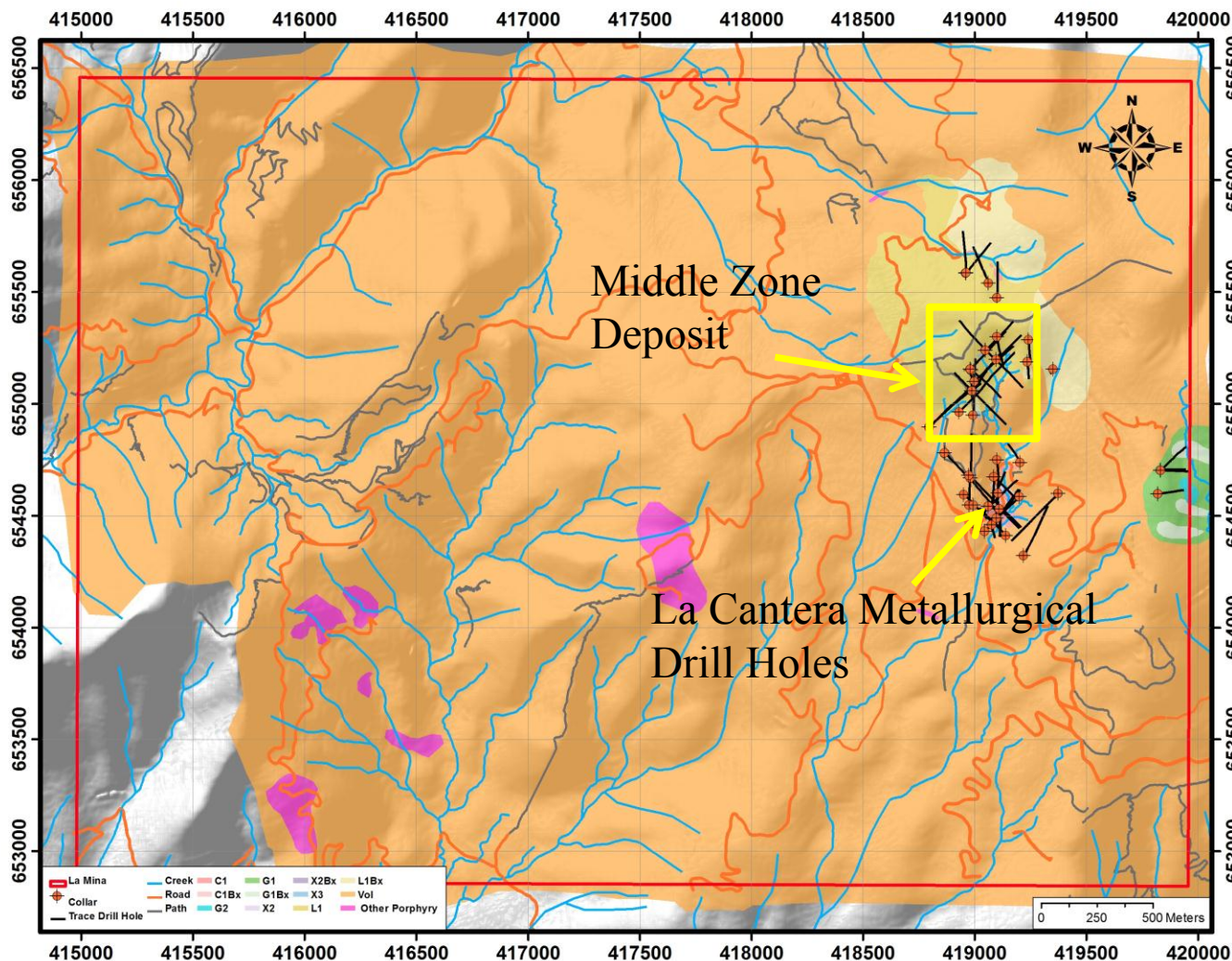




La Mina - Location & Geology

BELLHAVEN

Results Announced March 22, 2012



- Middle Zone Deposit
- ~500m North of La Cantera Resource
- Approximately 29 drill holes so far



BELLHAVEN
Copper & Gold Inc

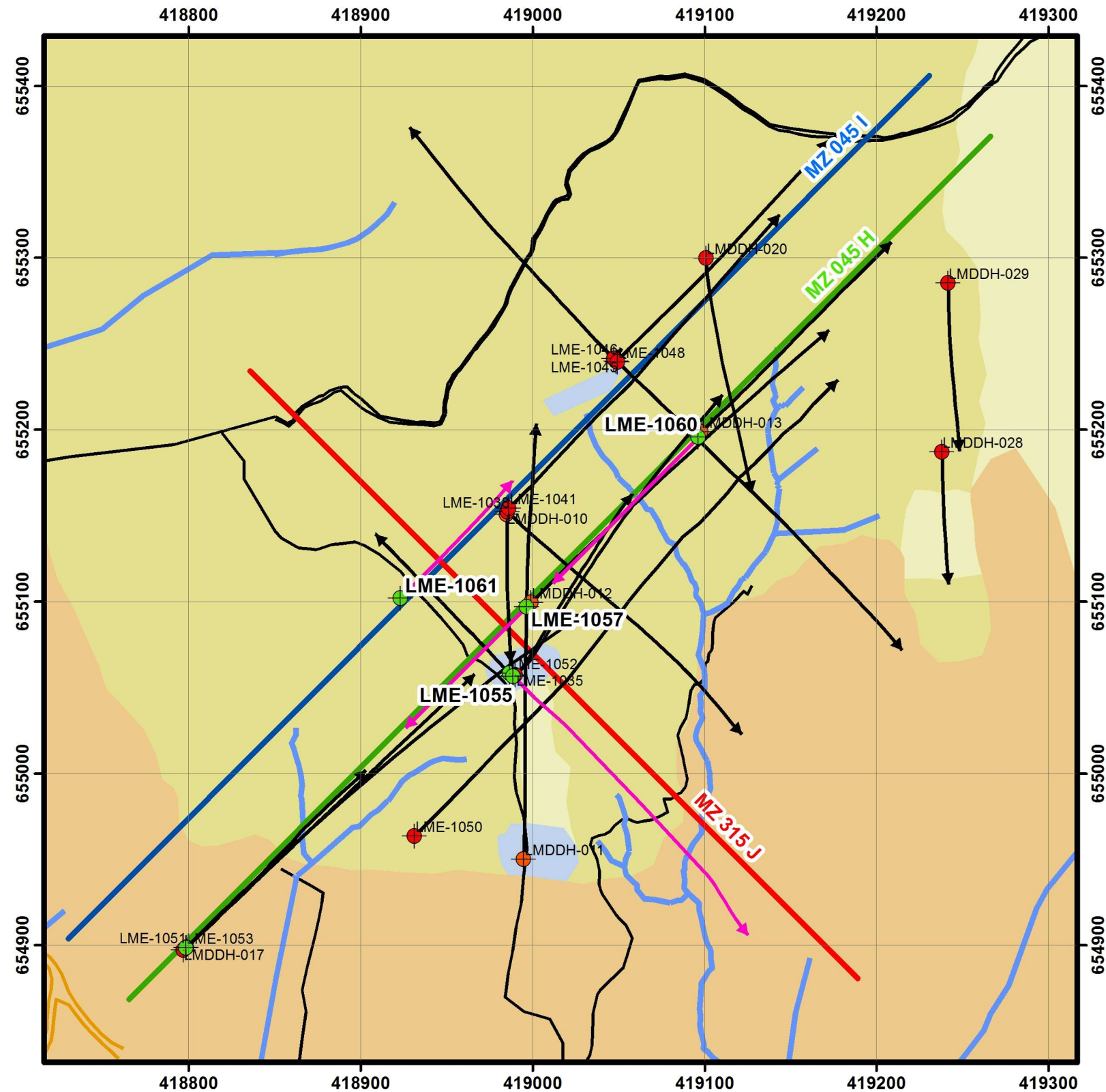
Middle Zone Prospect

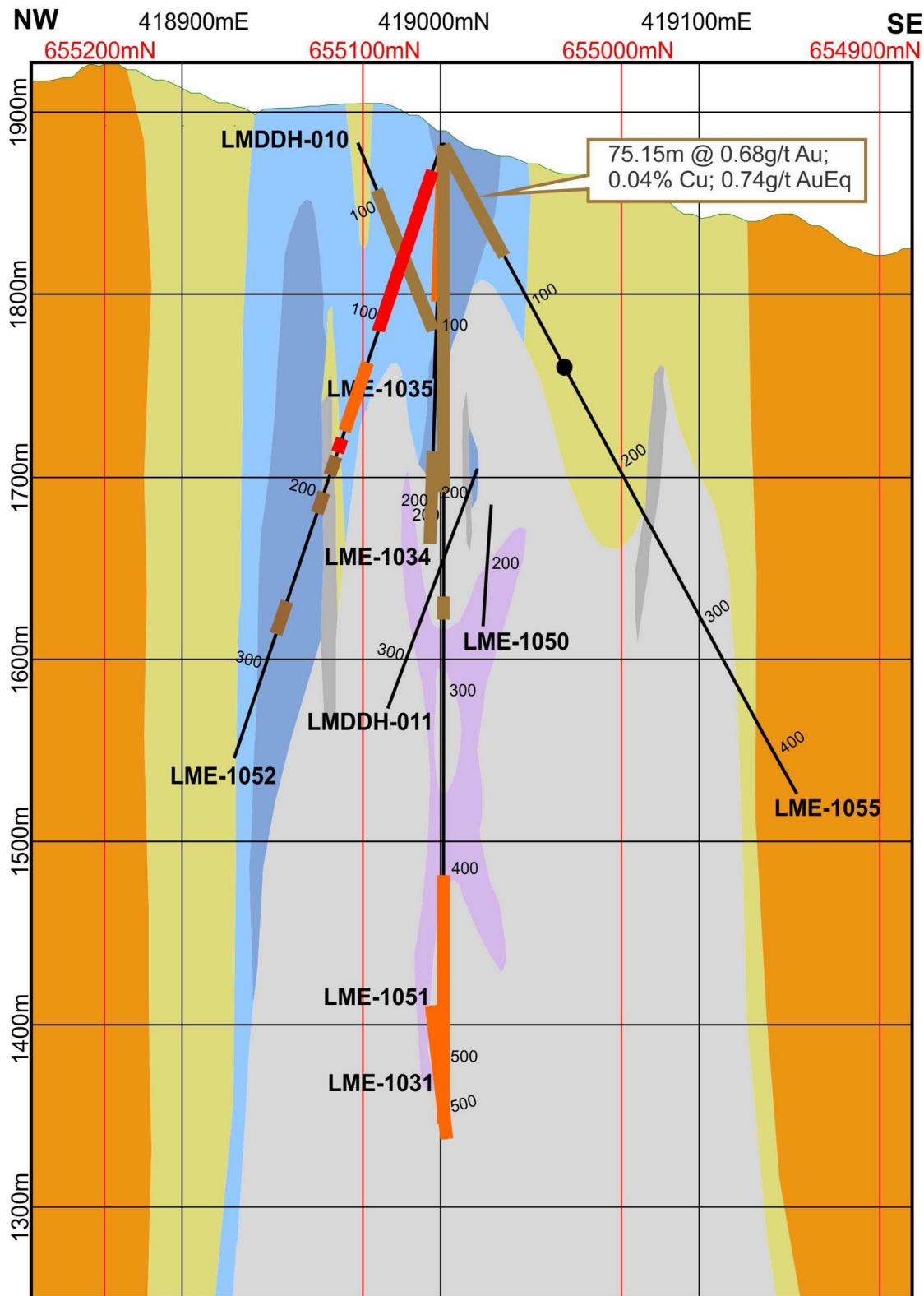


0 50 100
Meters

Legend

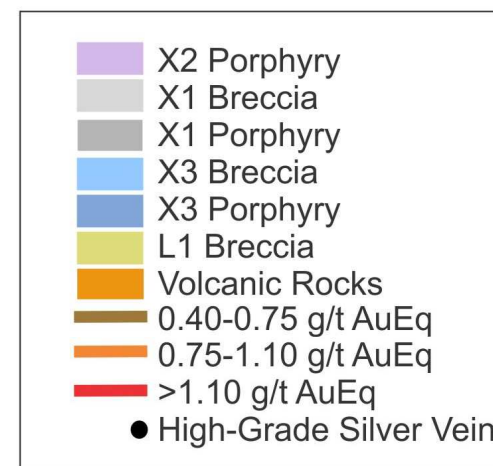
- Bellhaven (2010)
- Bellhaven (2011)
- Bellhaven (2012)
- Old Drill Hole Trace
- New Drill Hole Trace
- X3 Porphyry
- L1 Porphyry
- L1 Breccia
- Volcanic Rock
- MZ 045 H Section
- MZ 045 I Section
- MZ 315 J Section
- Creek
- Road
- Path





BELLHAVEN
COPPER & GOLD INC.

Middle Zone Section MZ 315 J Lithology & Significant Drill Hole Intercepts



SW

NE

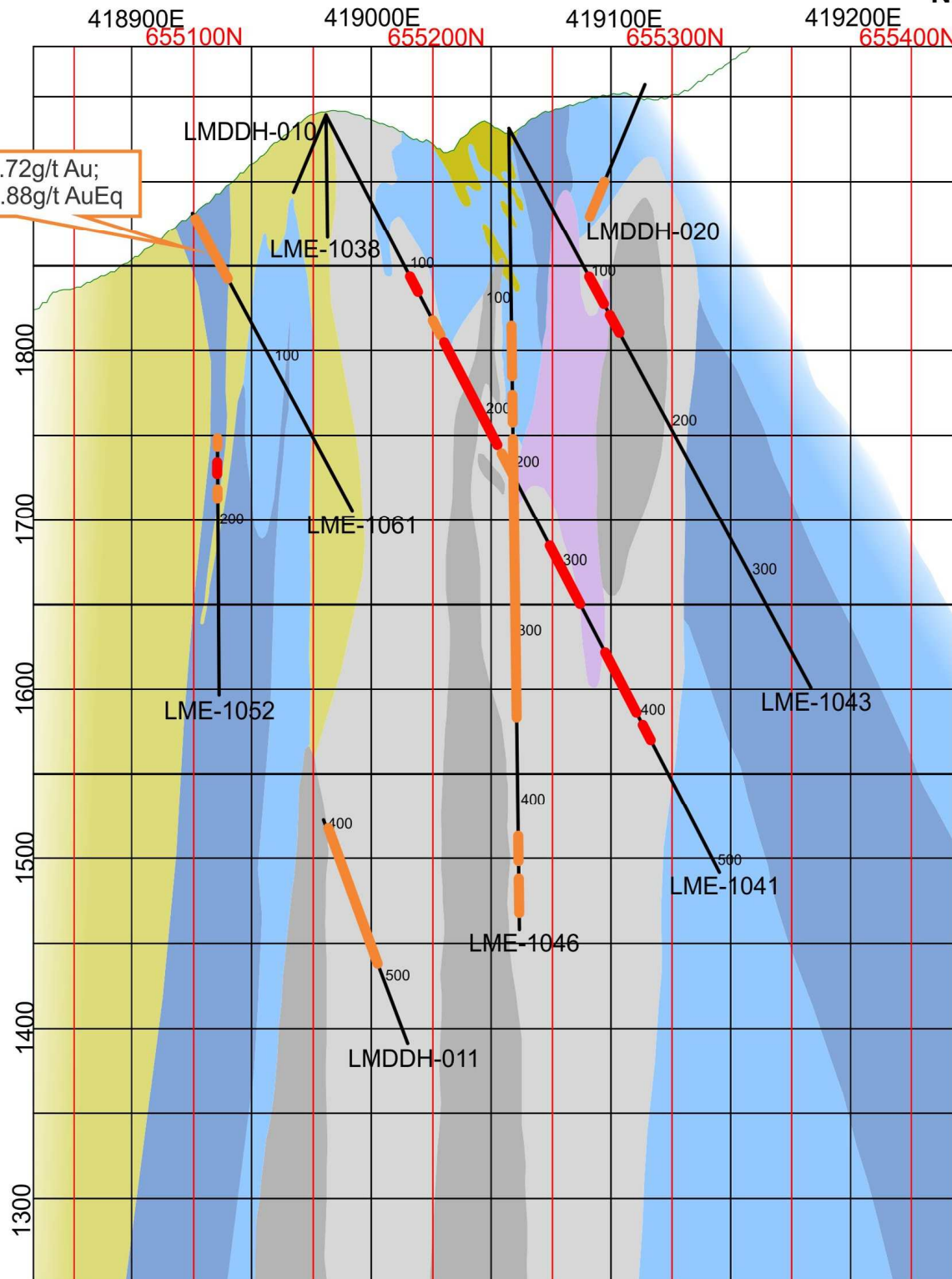


BELLHAVEN

COPPER & GOLD INC.

Middle Zone Section MZ 045 I Lithology & Significant Drill Hole Intercepts

42.67m @ 0.72g/t Au;
0.09% Cu; 0.88g/t AuEq



- X2 Porphyry
- X1 Breccia
- X1 Porphyry
- X3 Breccia
- X3 Porphyry
- L1 Breccia
- L1 Porphyry
- 0.40-0.75 g/t AuEq
- 0.75-1.10 g/t AuEq
- >1.10 g/t AuEq

Looking to NW

0m 100m 200m



SW

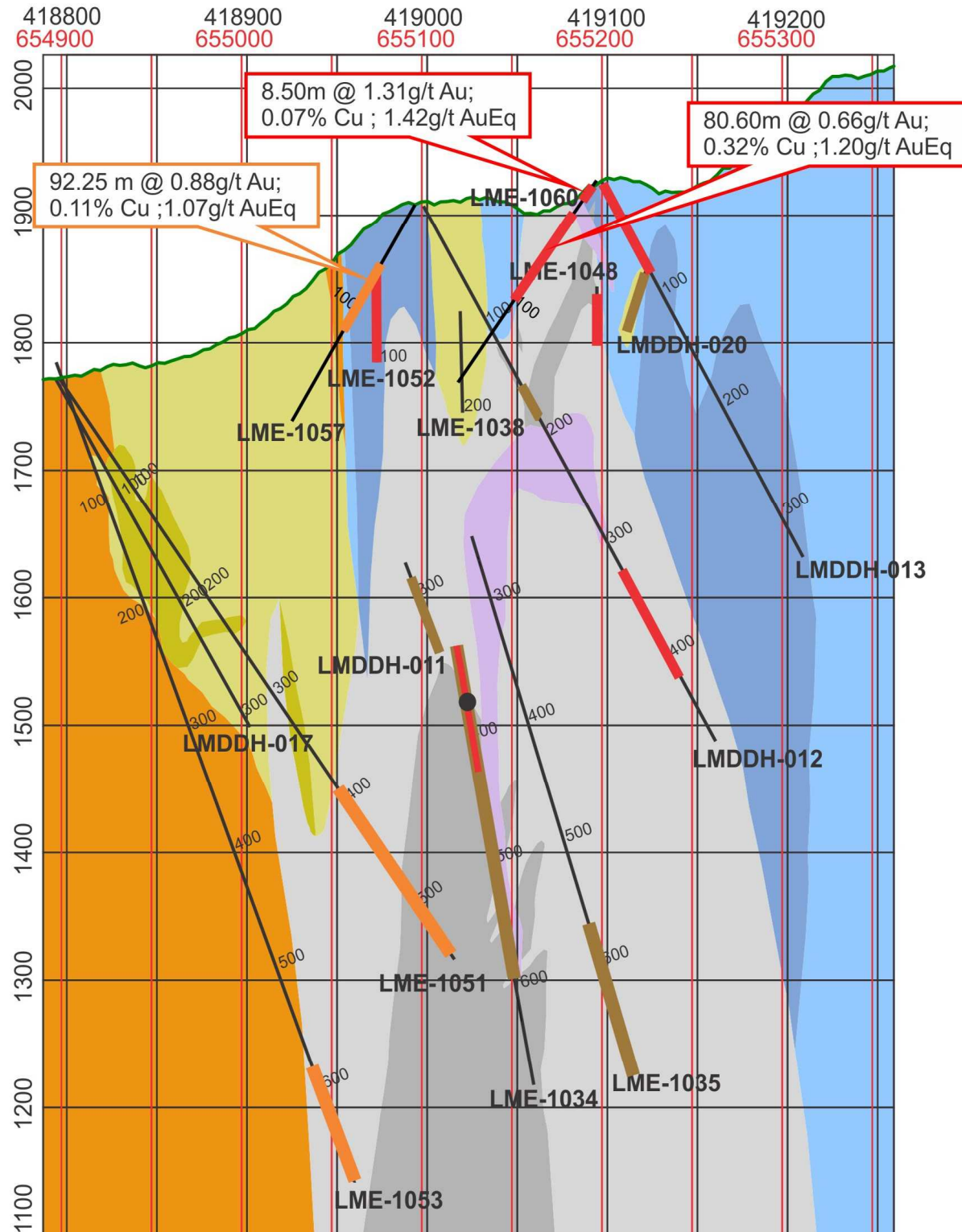
NE



BELLHAVEN

COPPER & GOLD INC.

Middle Zone Section MZ 045 H Lithology & Significant Drill Hole Intercepts



Looking to NW

0m 100m 200m

