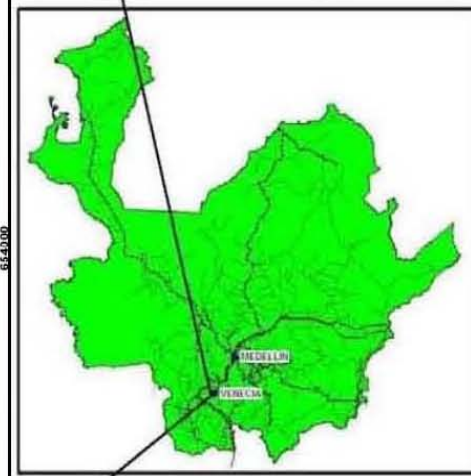
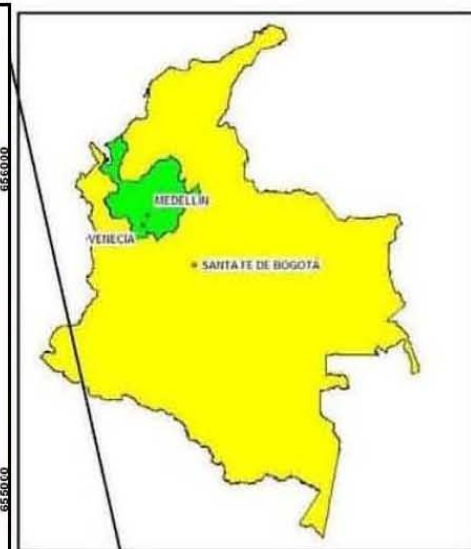
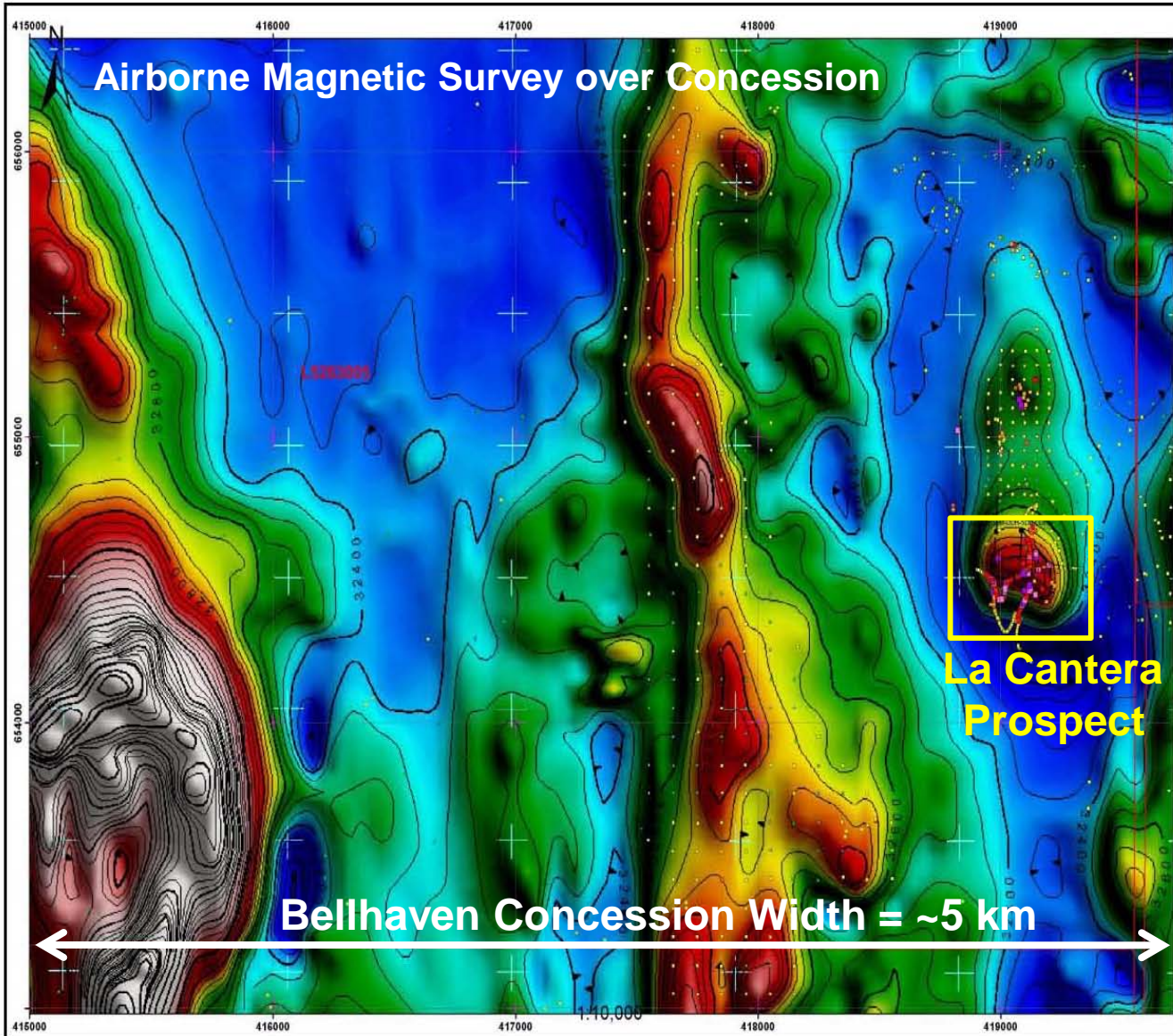




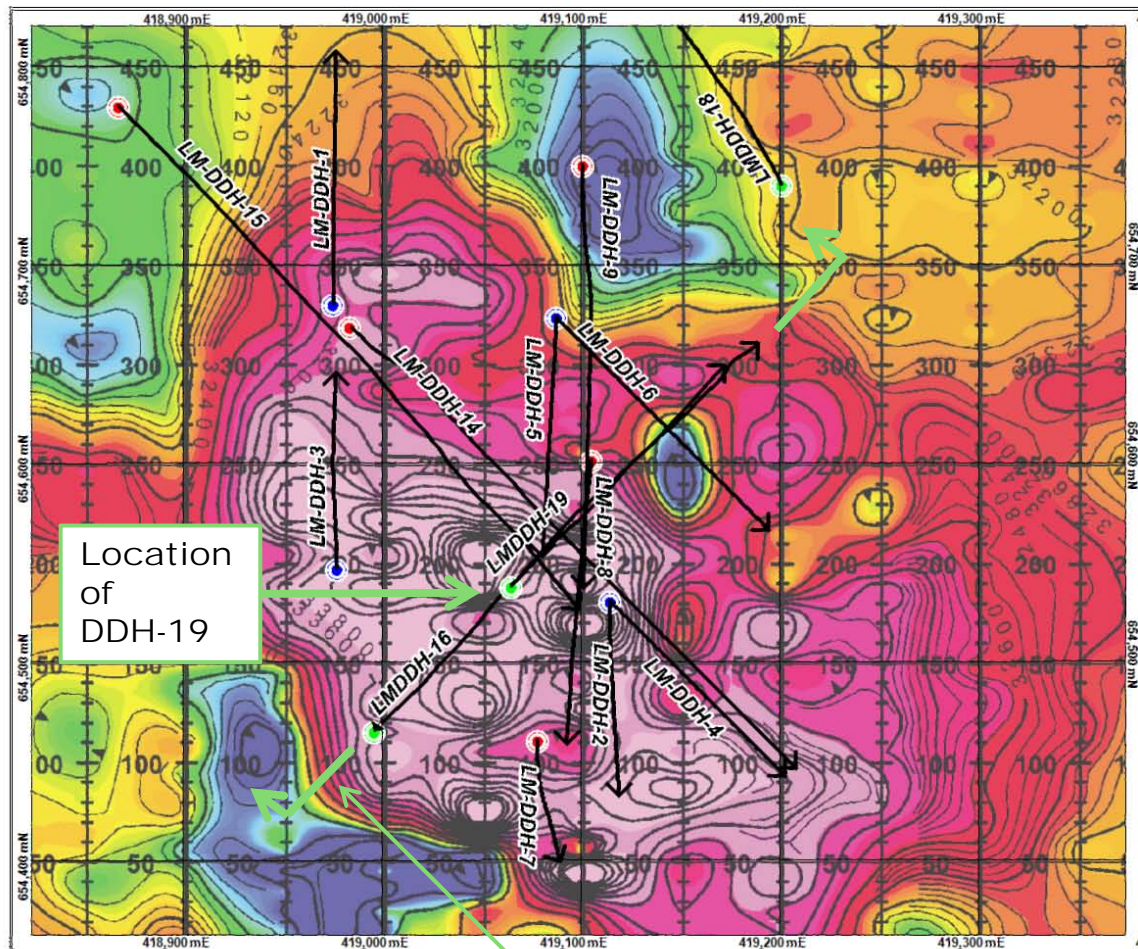
La Mina—Location & Concession Maps



LOCATION MAP

La Mina – Drill-Hole Location Map

Ground Magnetic Survey Map Showing the Location of Drill Holes Completed to Date at La Cantera.



Trace of Cross Section Over La Cantera Prospect (Cross Section Looking to NW). See Next Slide.



BELLHAVEN
Copper & Gold Inc

La Cantera Prospect

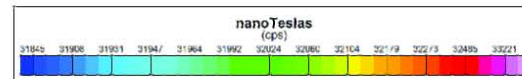


100m

- AngloGold-Ashanti:2006 Drill Holes
- Bellhaven Copper & Gold Inc.:2010 Drill Holes
- Bellhaven Copper & Gold Inc.:2011 Drill Holes

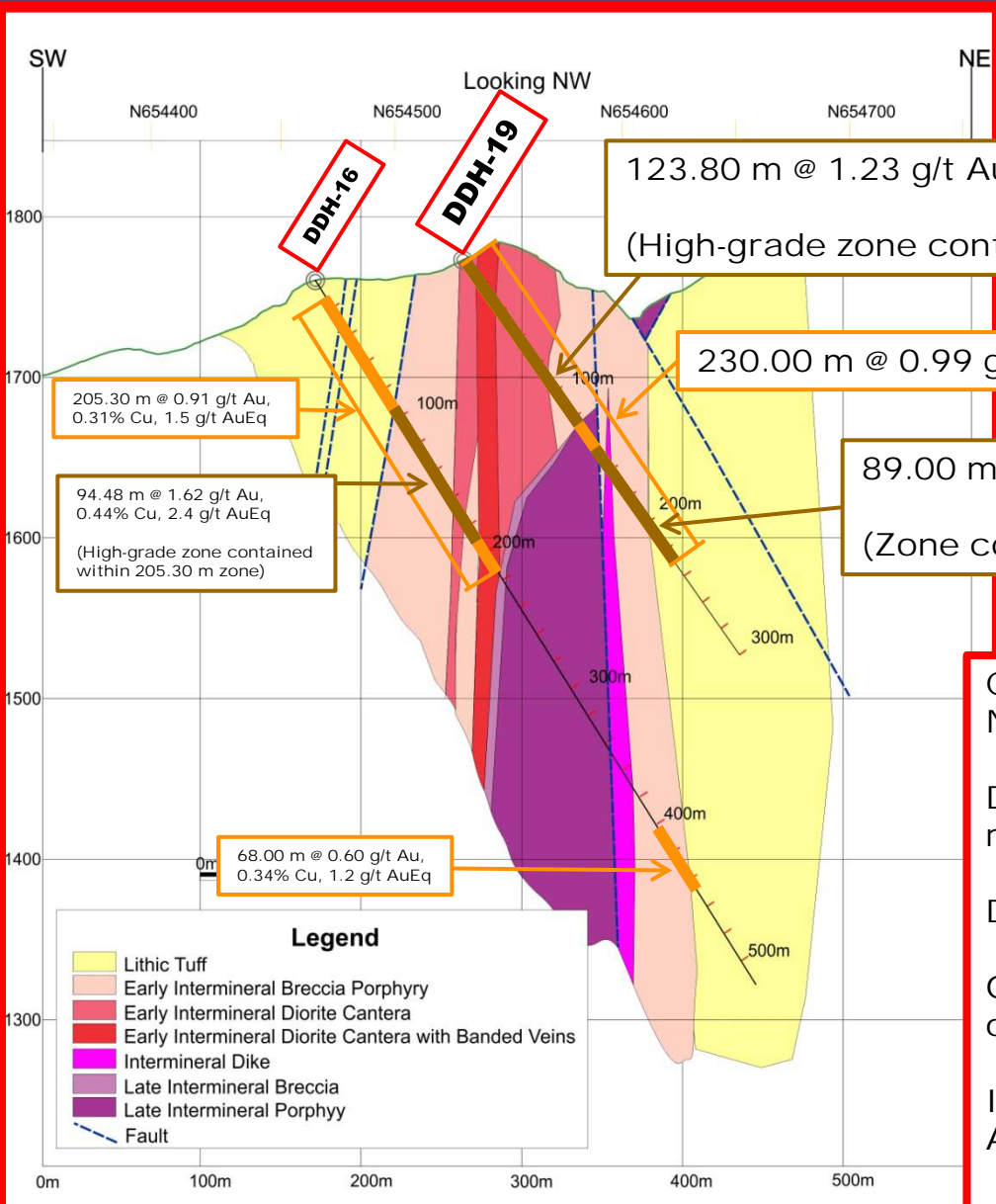
GROUND MAGNETOMETRY

Total Field Magnetic Intensity
Reduced to the Pole





La Mina – Cross Section (Looking to NW)



Cross section through the La Cantera prospect

Notes:

DDH-19 drill-hole results announced in this press release

DDH-16 drill-hole results announced 28 Feb 2011

Gold-copper zones start at surface and remain open to depth.

Intercepts in orange calculated using a 0.40 g/t AuEq cut-off grade