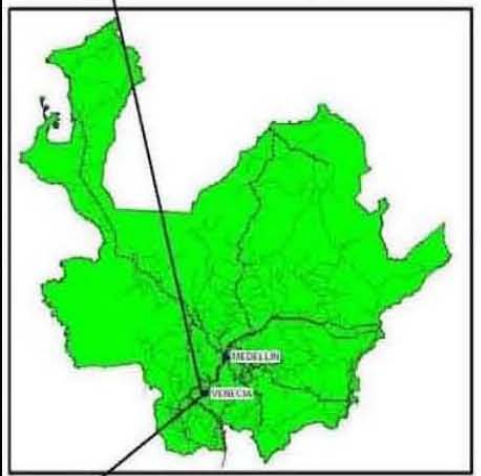
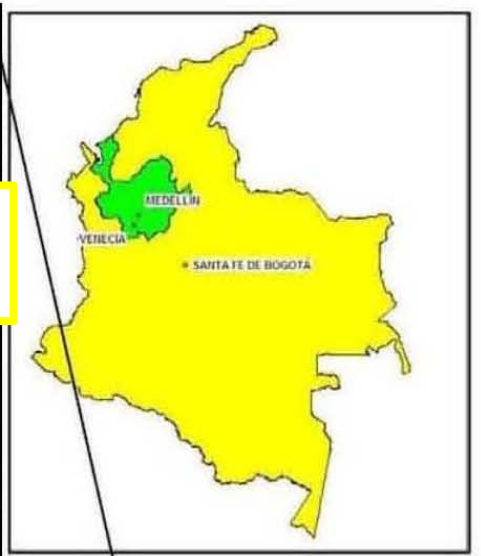
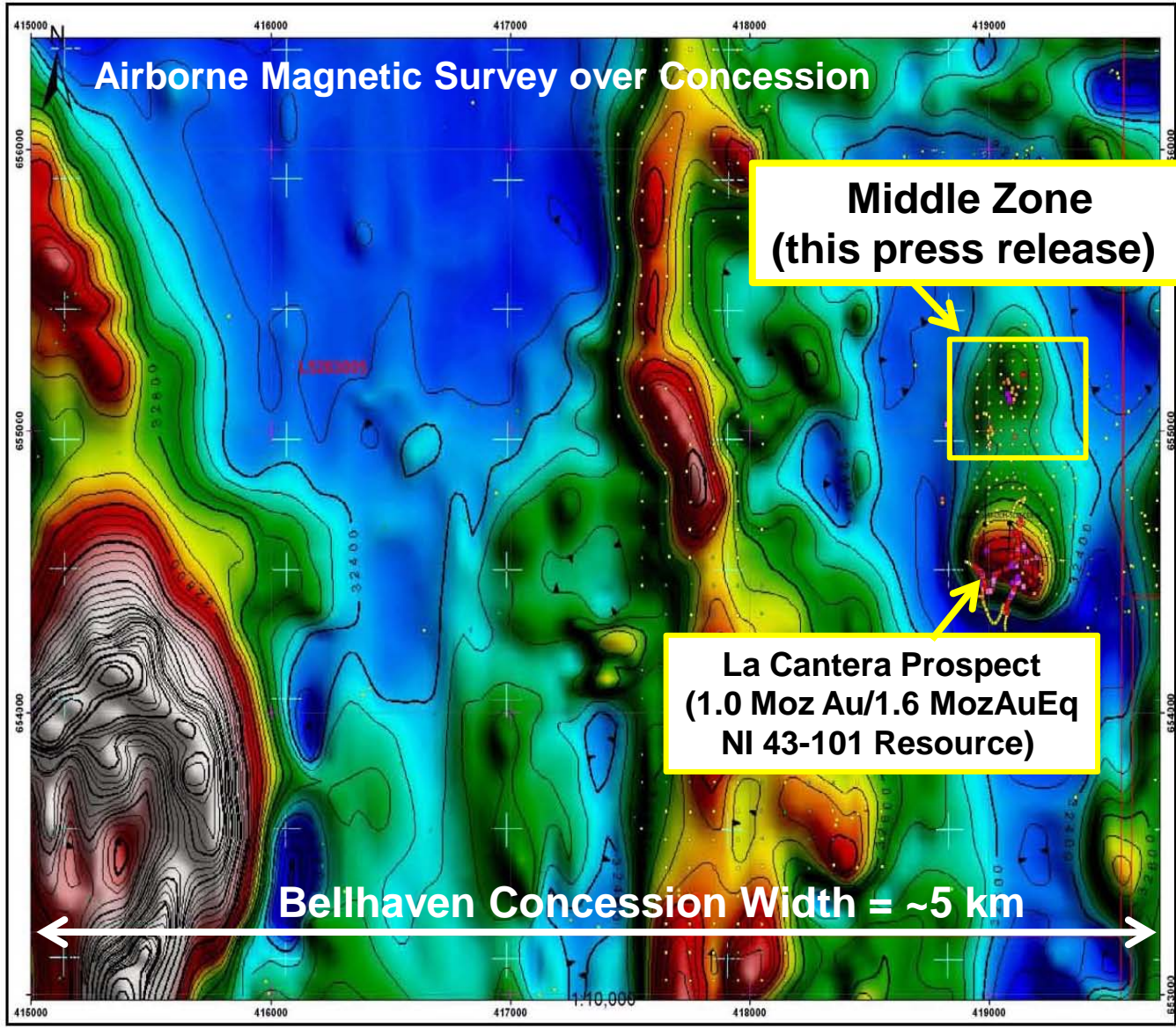




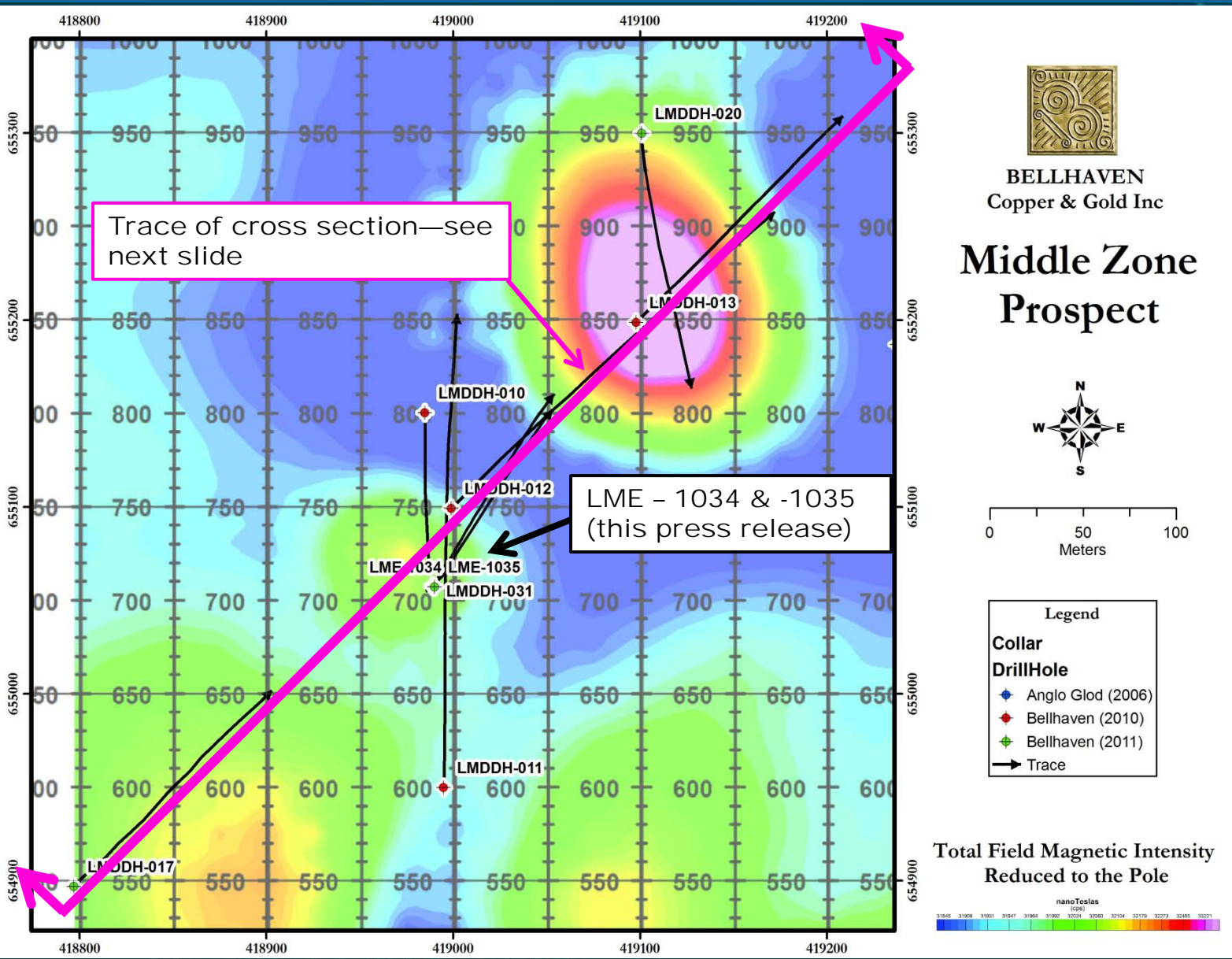
La Mina—Location & Concession Maps



LOCATION MAP

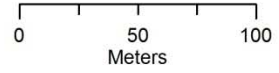


La Mina Project – Drill-Hole Location Map



BELLHAVEN
Copper & Gold Inc

Middle Zone Prospect



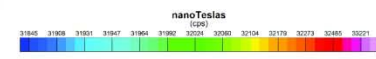
Legend

Collar

DrillHole

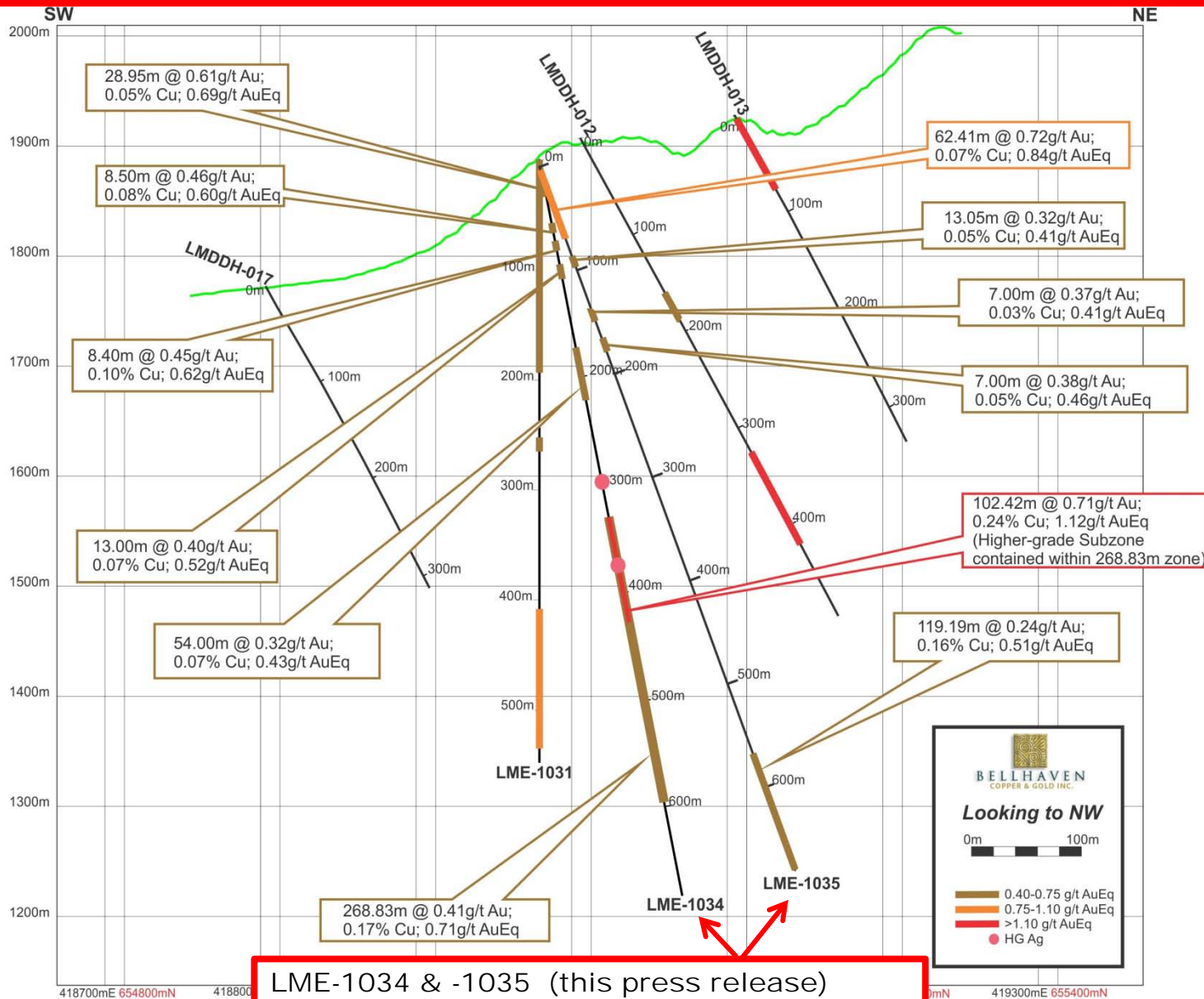
- ◆ Anglo Glod (2006)
- ◆ Bellhaven (2010)
- ◆ Bellhaven (2011)
- Trace

Total Field Magnetic Intensity
Reduced to the Pole





La Mina – Cross Section (Looking to NW)



NE-SW Cross section through the Middle Zone prospect

Notes:
Red circles shown on drill-hole LME-1034 represent locations of the two silver veins described in text of the press release.

Intercepts calculated using a 0.40 g/t AuEq cut-off grade.

LME-1034 & -1035 (this press release)