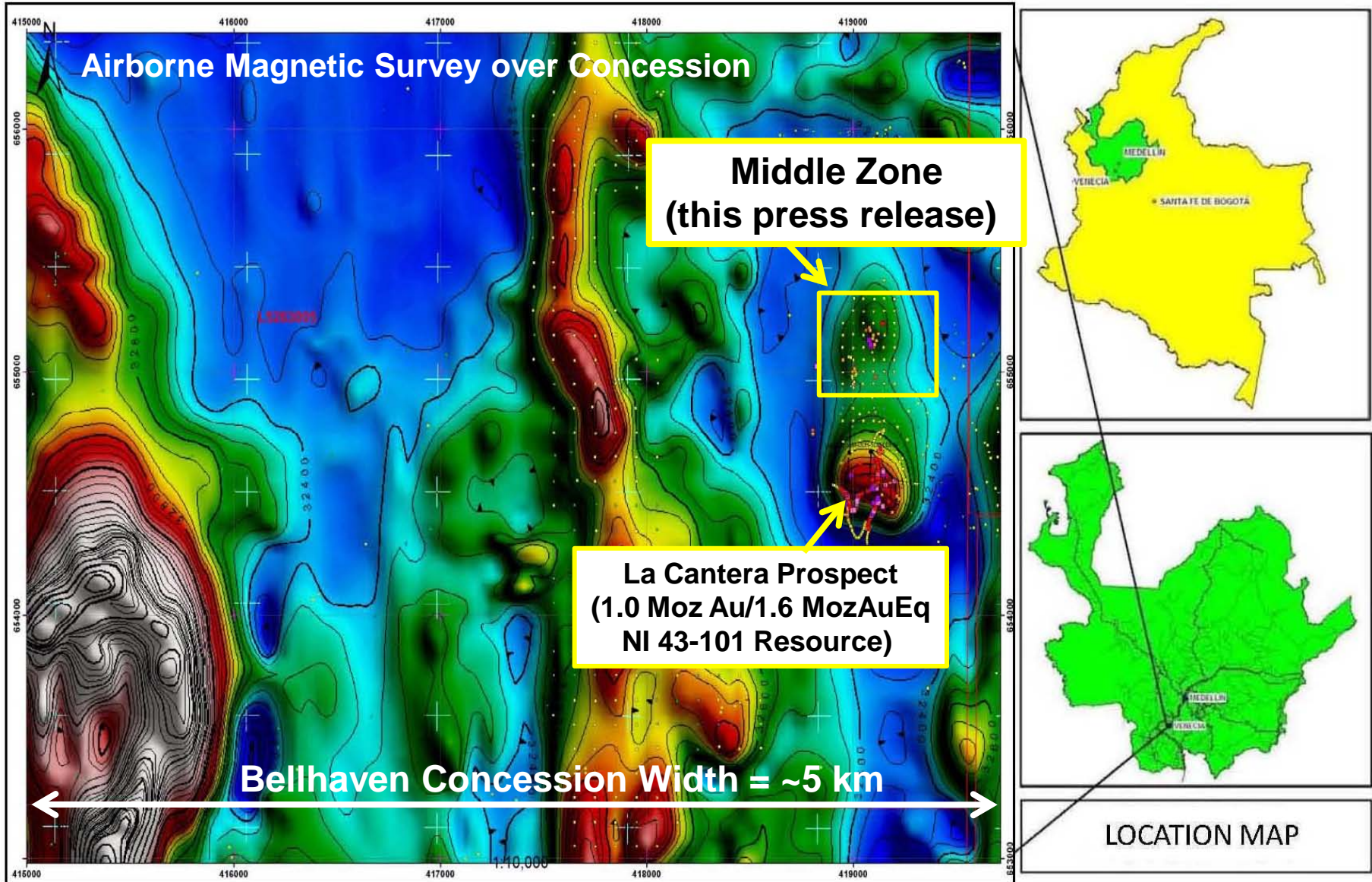
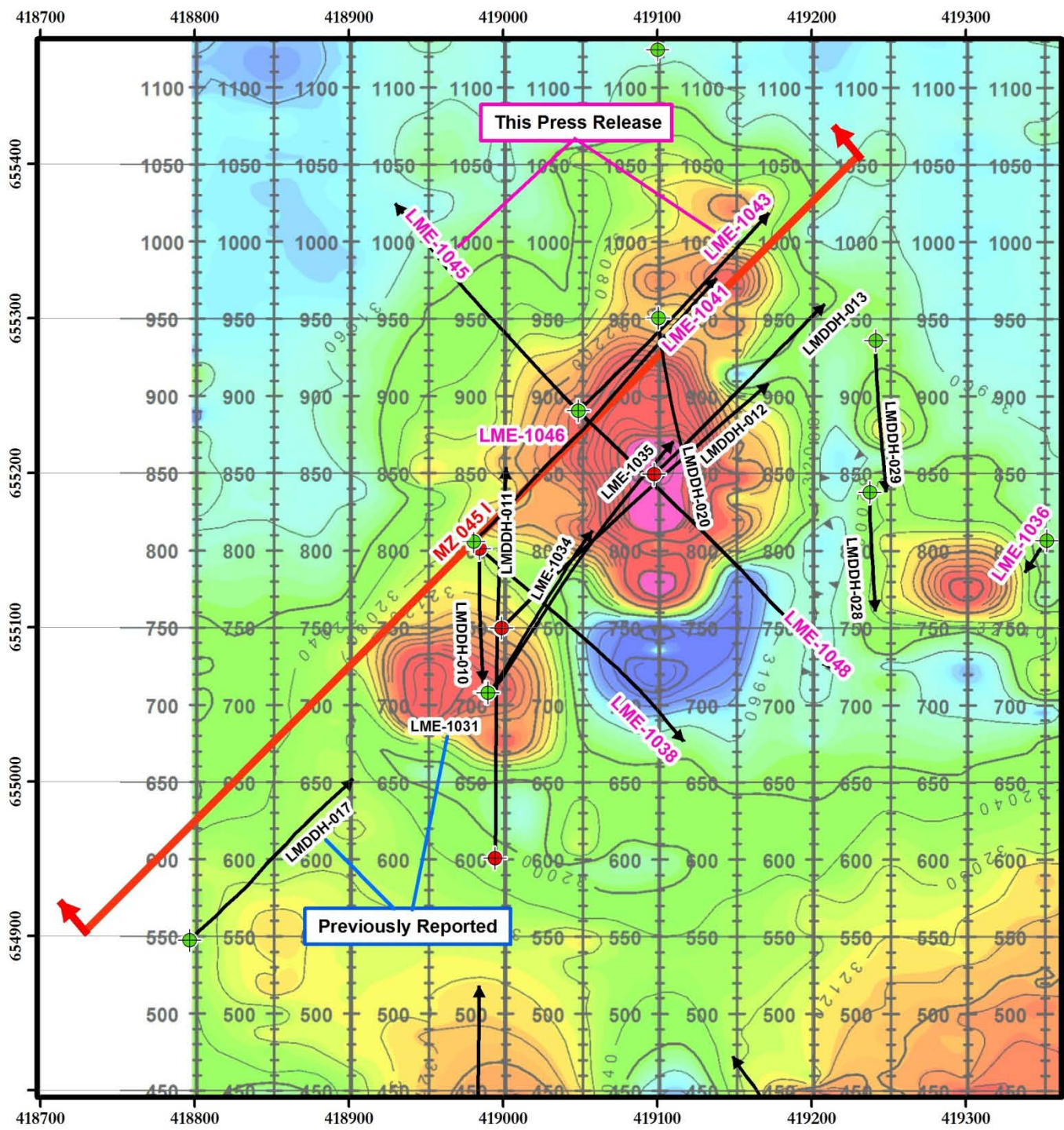


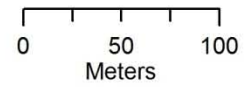
# La Mina—Location & Concession Maps





**BELLHAVEN**  
Copper & Gold Inc

# Middle Zone Prospect

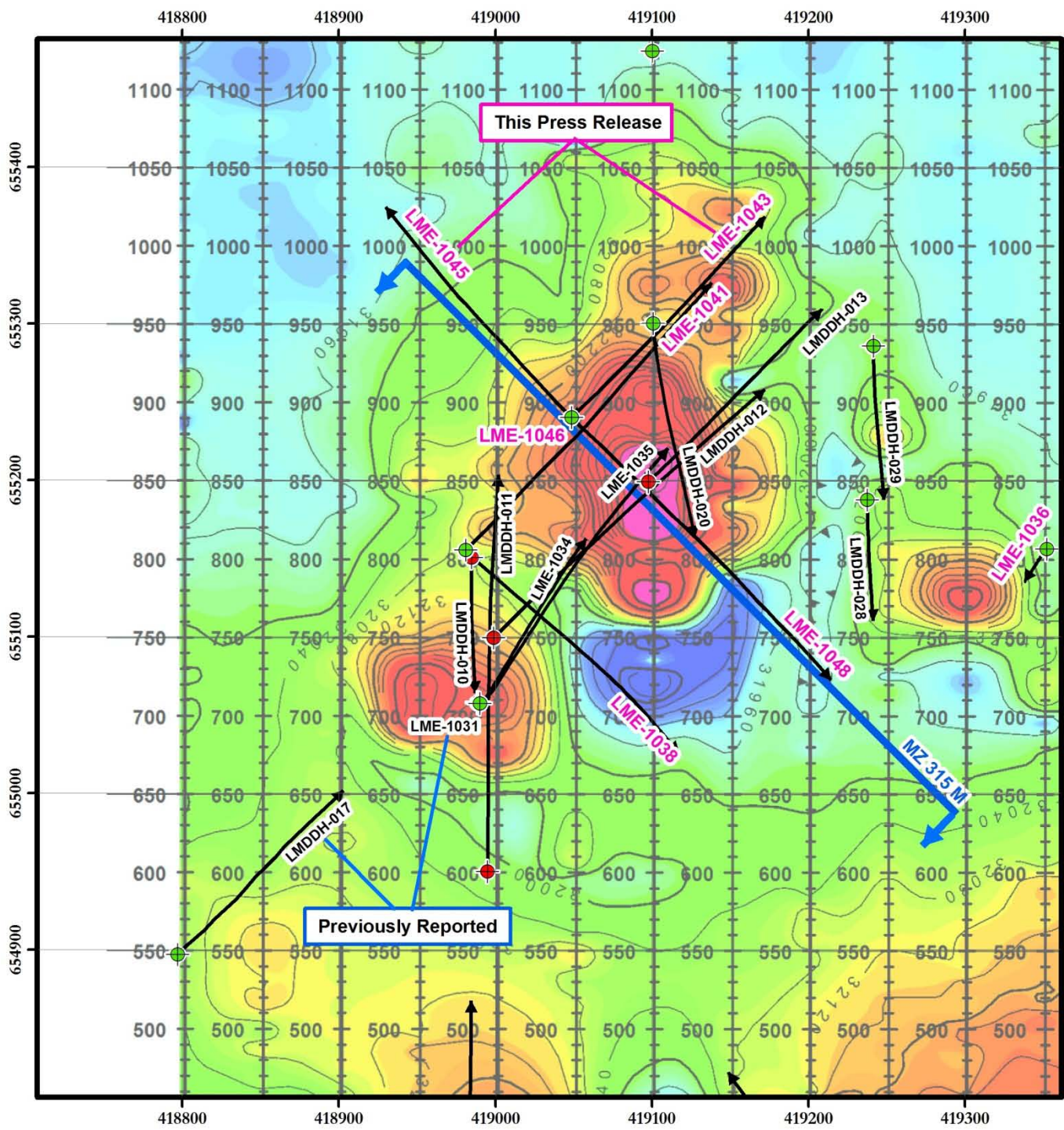


### Legend

- Bellhaven (2010)
- Bellhaven (2011)
- Drill Hole Trace
- Cross Section MZ 45 I

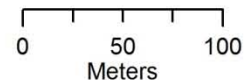
**Total Field Magnetic Intensity  
Reduced to the Pole**





**BELLHAVEN**  
Copper & Gold Inc

# Middle Zone Prospect



**Legend**

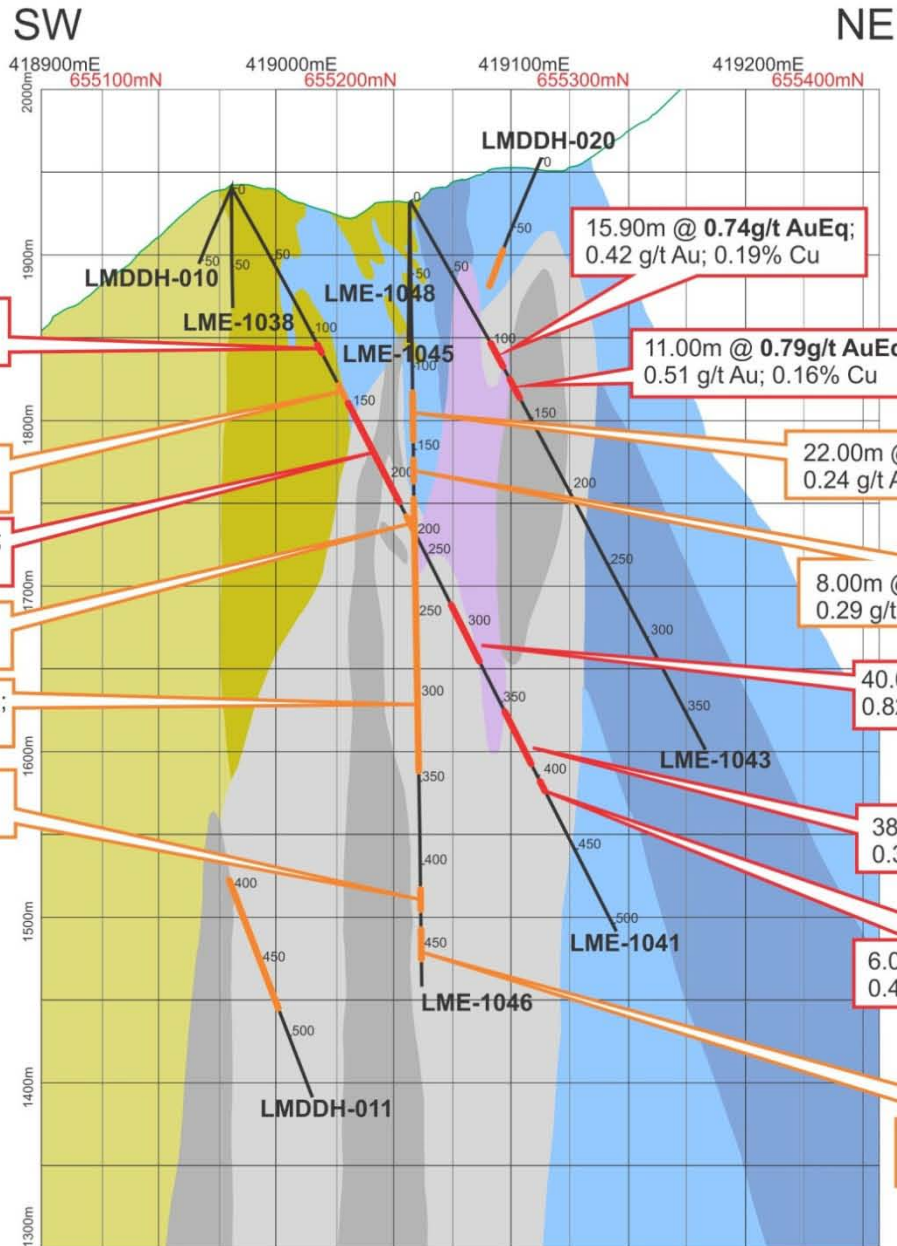
- Bellhaven (2010)
- Bellhaven (2011)
- Drill Hole Trace
- Cross Section MZ 315 M

**Total Field Magnetic Intensity  
Reduced to the Pole**





# Middle Zone Section MZ 045 I Lithology & Significant Drill Hole Intercepts



5.00m @ **0.68g/t AuEq**;  
0.56 g/t Au; 0.07% Cu

8.00m @ **0.45g/t AuEq**;  
0.24 g/t Au; 0.12% Cu

69.00m @ **0.76g/t AuEq**;  
0.38 g/t Au; 0.22% Cu

8.00m @ **0.50g/t AuEq**;  
0.23 g/t Au; 0.15% Cu

167.00m @ **0.63g/t AuEq**;  
0.29 g/t Au; 0.20% Cu

8.00m @ **0.41g/t AuEq**;  
0.18 g/t Au; 0.13% Cu

15.90m @ **0.74g/t AuEq**;  
0.42 g/t Au; 0.19% Cu

11.00m @ **0.79g/t AuEq**;  
0.51 g/t Au; 0.16% Cu

22.00m @ **0.60g/t AuEq**;  
0.24 g/t Au; 0.21% Cu

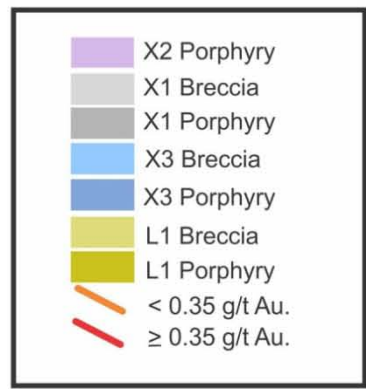
8.00m @ **0.67g/t AuEq**;  
0.29 g/t Au; 0.22% Cu

40.00m @ **1.43g/t AuEq**;  
0.82 g/t Au; 0.35% Cu

38.30m @ **0.82g/t AuEq**;  
0.38 g/t Au; 0.26% Cu

6.00m @ **0.62g/t AuEq**;  
0.42 g/t Au; 0.12% Cu

18.00m @ **0.70g/t AuEq**;  
0.25 g/t Au; 0.25% Cu



Looking to NW



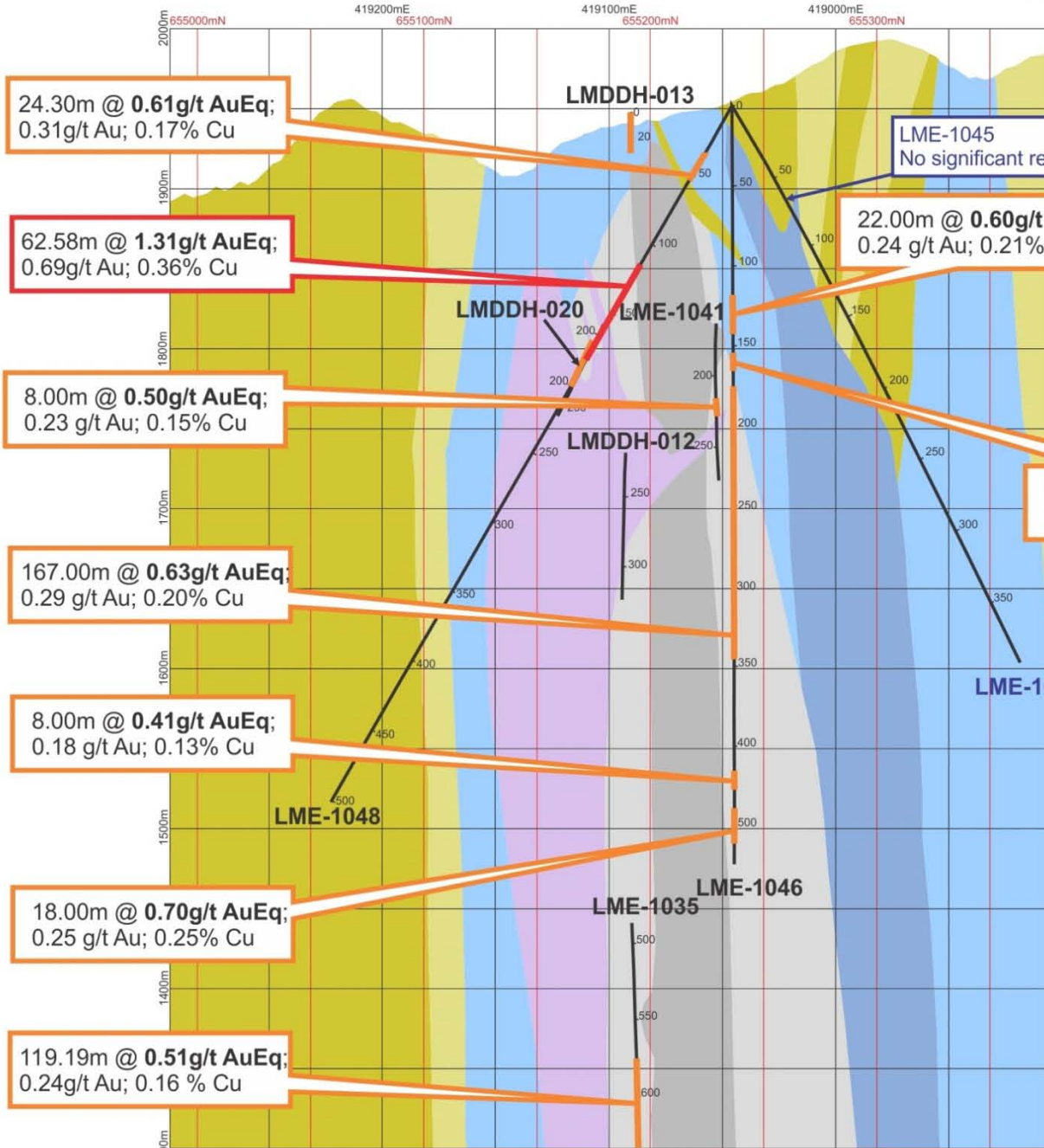
SE

NW



BELLHAVEN  
COPPER & GOLD INC.

# Middle Zone Section MZ 315 M Lithology & Significant Drill Hole Intercepts



24.30m @ **0.61g/t AuEq**;  
0.31g/t Au; 0.17% Cu

62.58m @ **1.31g/t AuEq**;  
0.69g/t Au; 0.36% Cu

8.00m @ **0.50g/t AuEq**;  
0.23 g/t Au; 0.15% Cu

167.00m @ **0.63g/t AuEq**;  
0.29 g/t Au; 0.20% Cu

8.00m @ **0.41g/t AuEq**;  
0.18 g/t Au; 0.13% Cu

18.00m @ **0.70g/t AuEq**;  
0.25 g/t Au; 0.25% Cu

119.19m @ **0.51g/t AuEq**;  
0.24g/t Au; 0.16 % Cu

LME-1045  
No significant results

22.00m @ **0.60g/t AuEq**;  
0.24 g/t Au; 0.21% Cu

8.00m @ **0.67g/t AuEq**;  
0.29 g/t Au; 0.22% Cu

