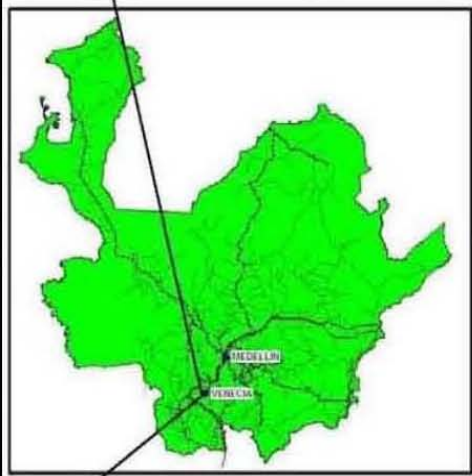
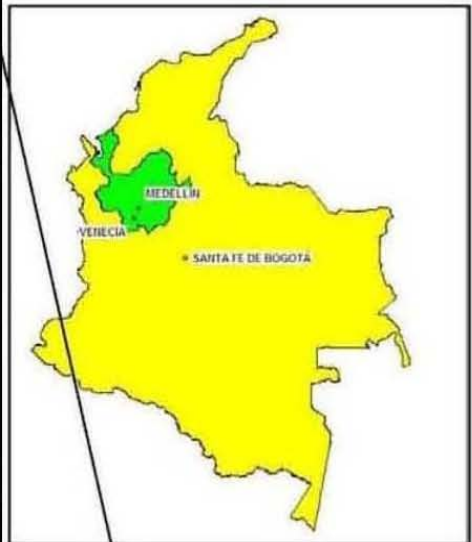
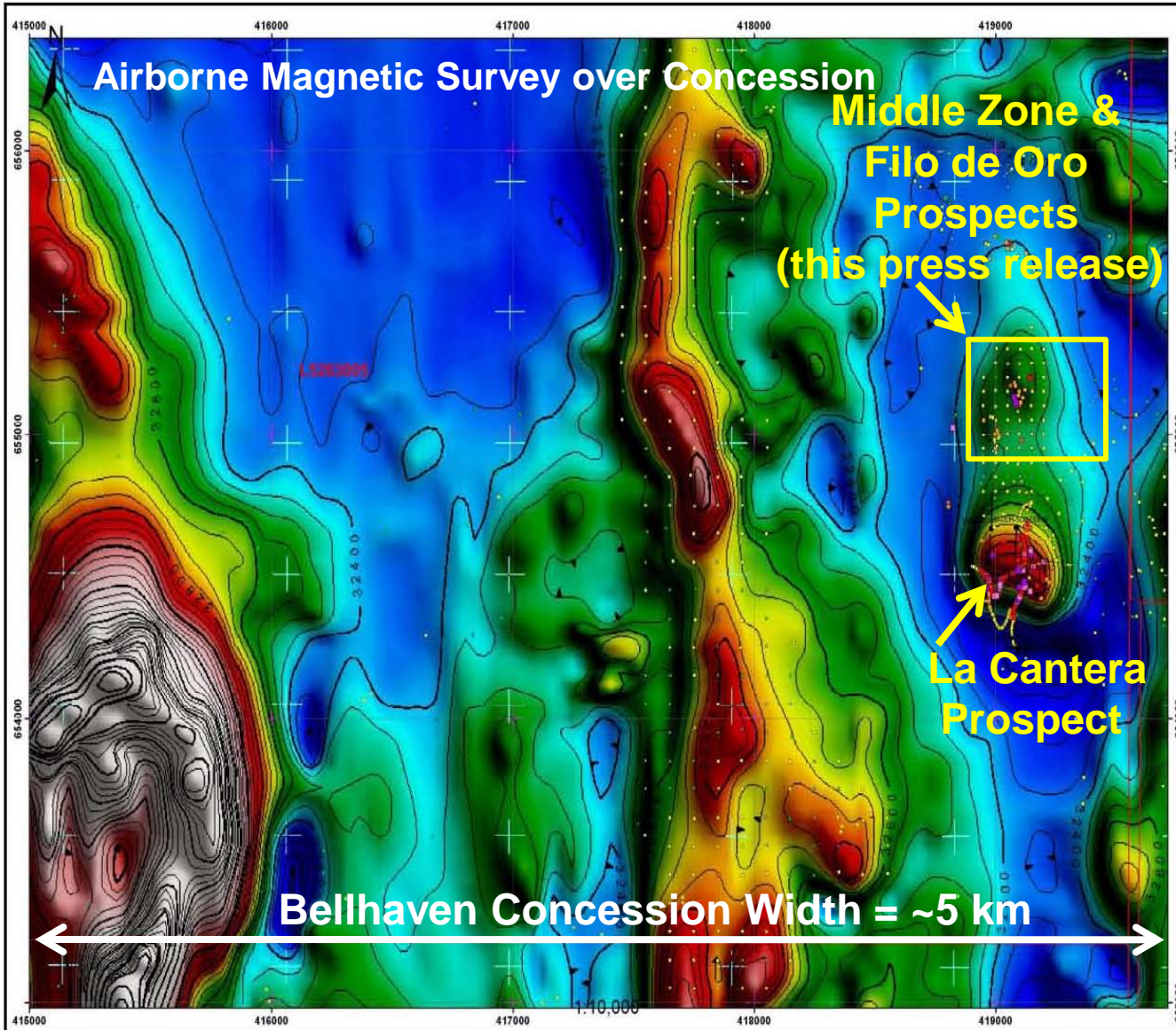




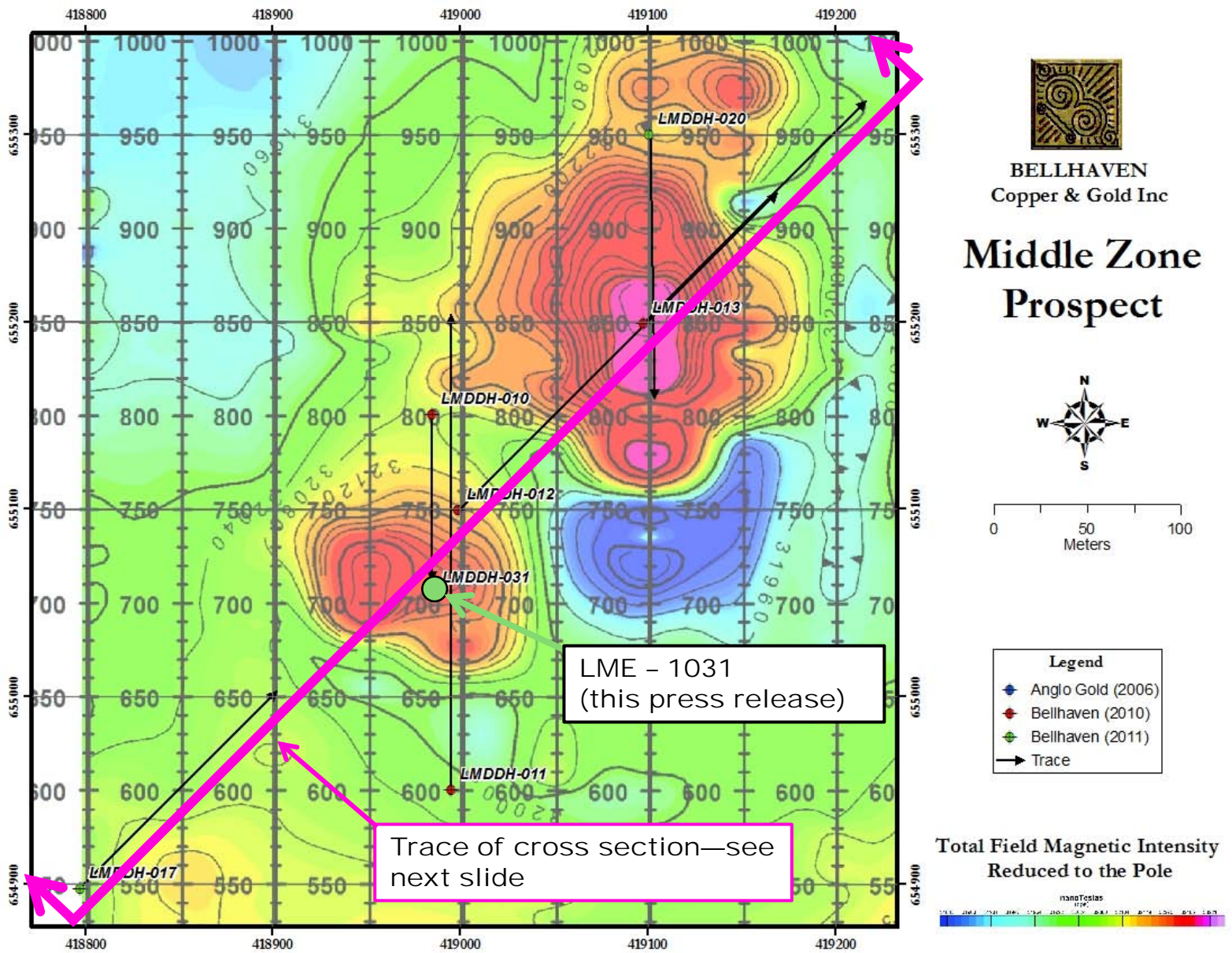
# La Mina—Location & Concession Maps



LOCATION MAP

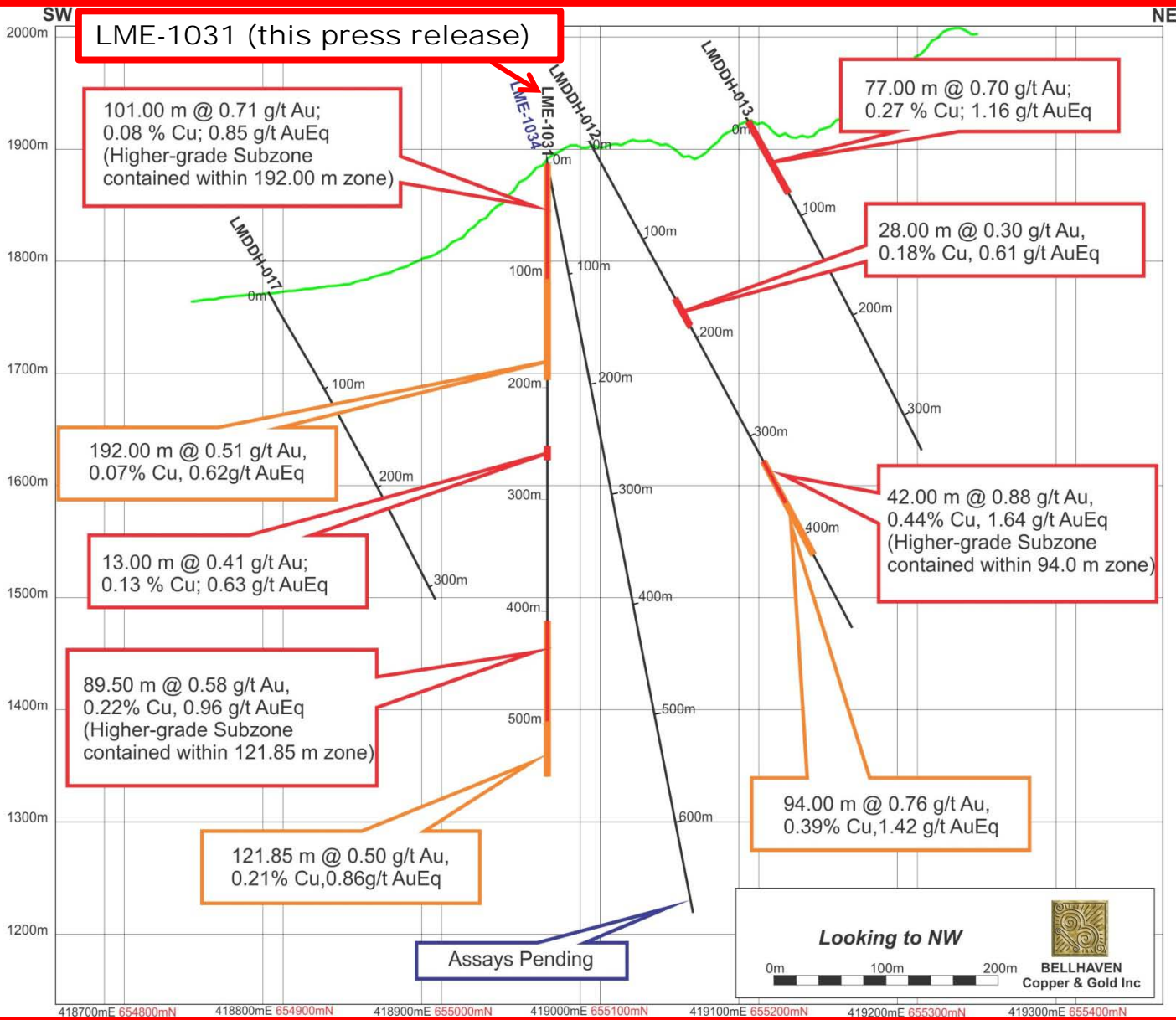


# La Mina Project – Drill-Hole Location Map





# La Mina – Cross Section (Looking to NW)



NE-SW Cross section through the Middle Zone prospect

Notes:

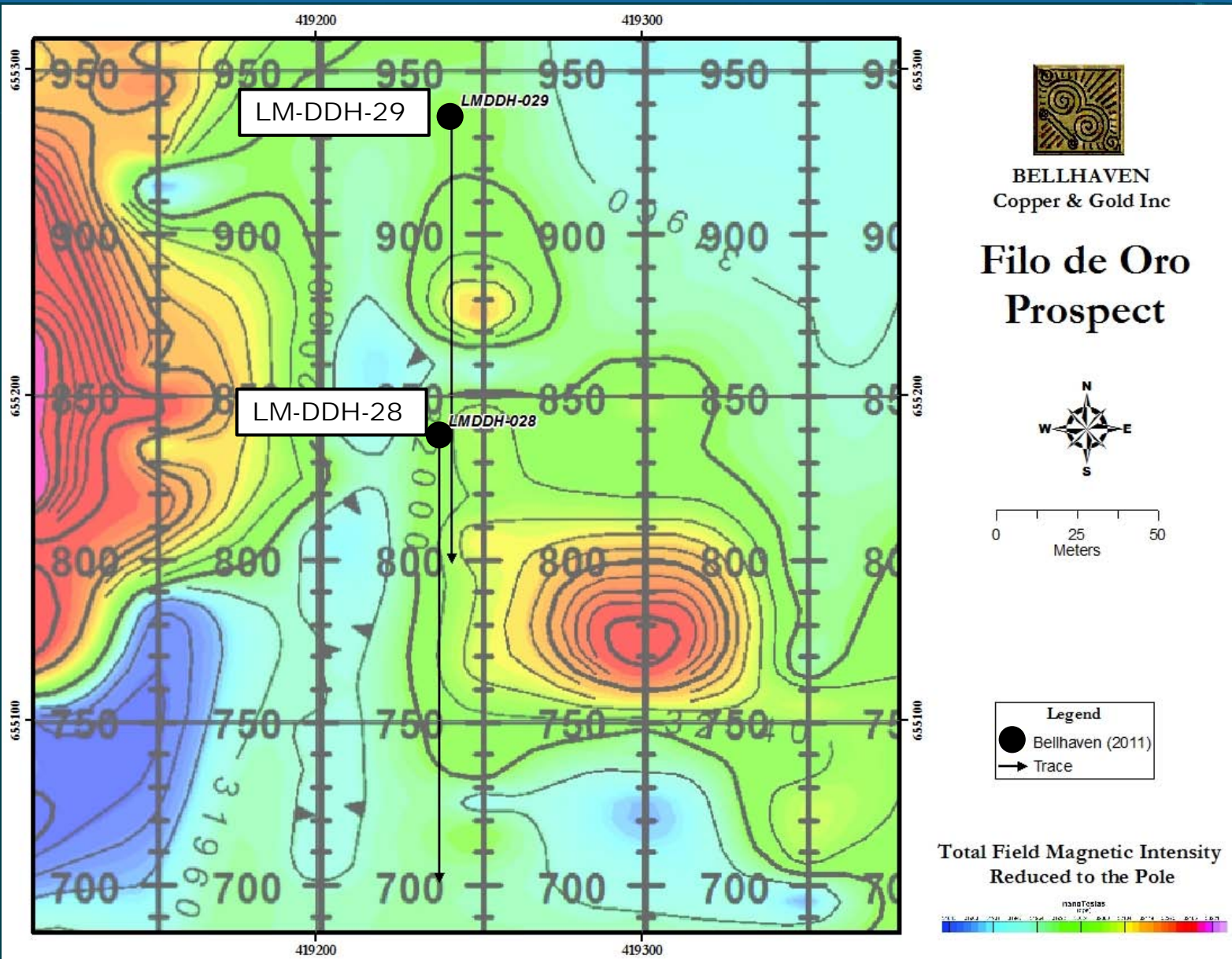
LME-1031 contains 2 principal intercepts, each over 100 m in length and each with higher-grade subzones. A third intercept, 13.00 m in length, is positioned between the two longer intercepts. (see Table 2 of press release).

Second intercept contains 28.08 g/t Ag over 13.00 m, including 141 g/t (4.5 oz) Ag over 2.30 m [Ag values not shown on cross section, see Table 2].

Intercepts in orange calculated using a 0.40 g/t AuEq cut-off grade.

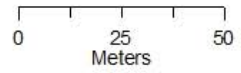


# La Mina Project – Drill-Hole Location Map



BELLHAVEN  
Copper & Gold Inc

## Filos de Oro Prospect



Legend

- Bellhaven (2011)
- Trace

Total Field Magnetic Intensity  
Reduced to the Pole

