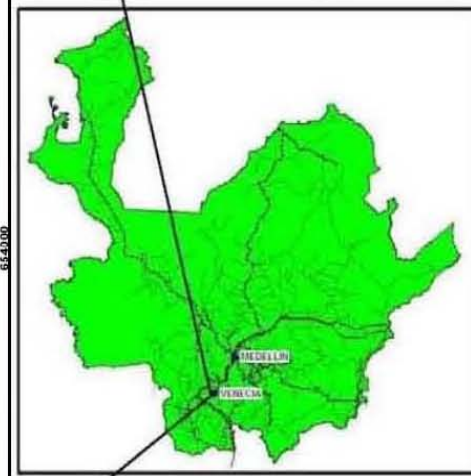
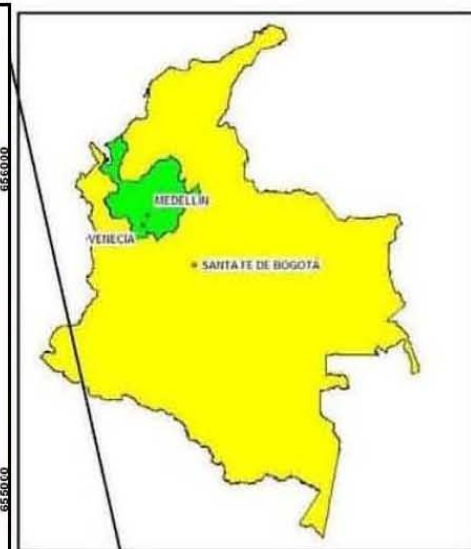
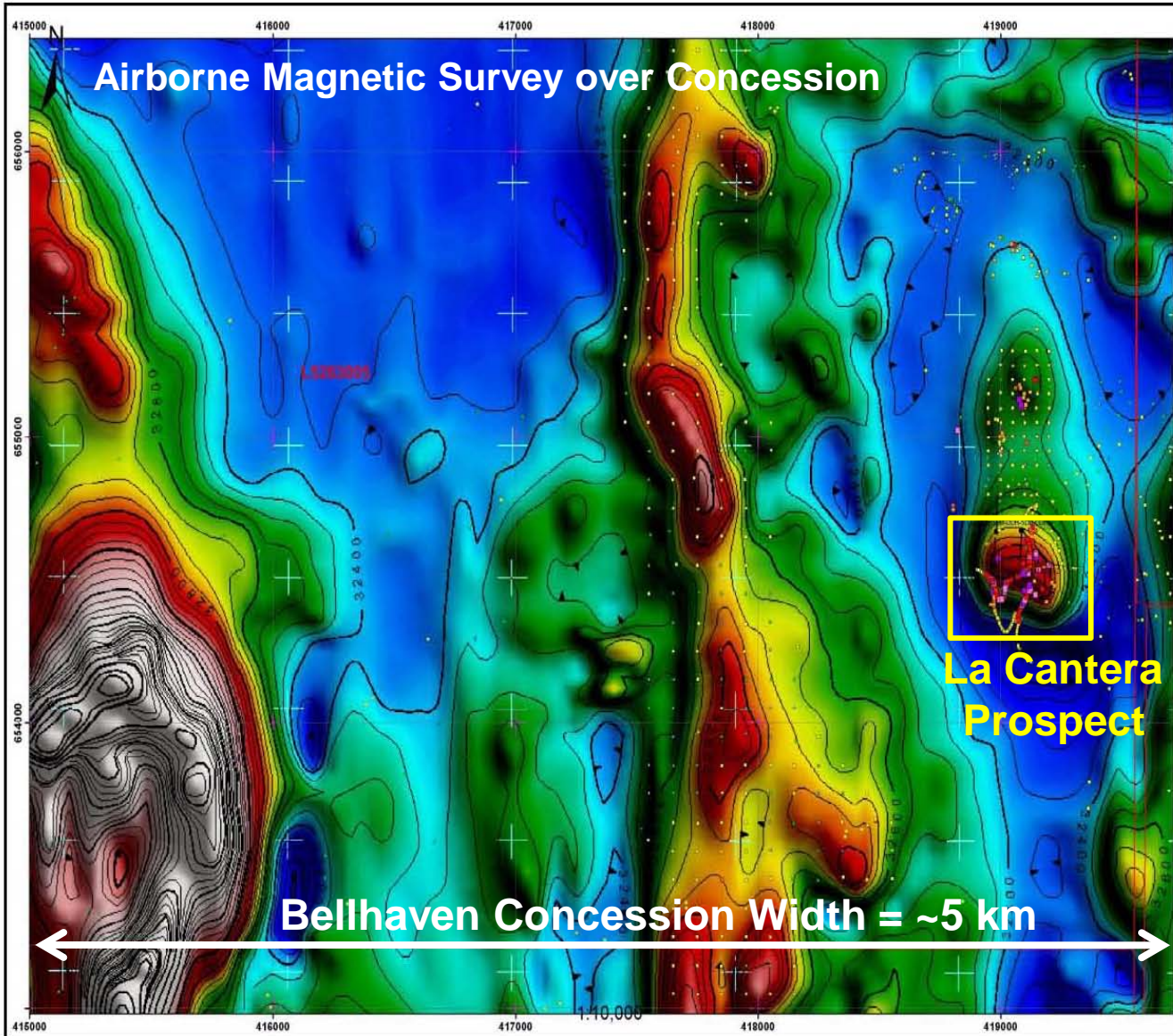




La Mina—Location & Concession Maps

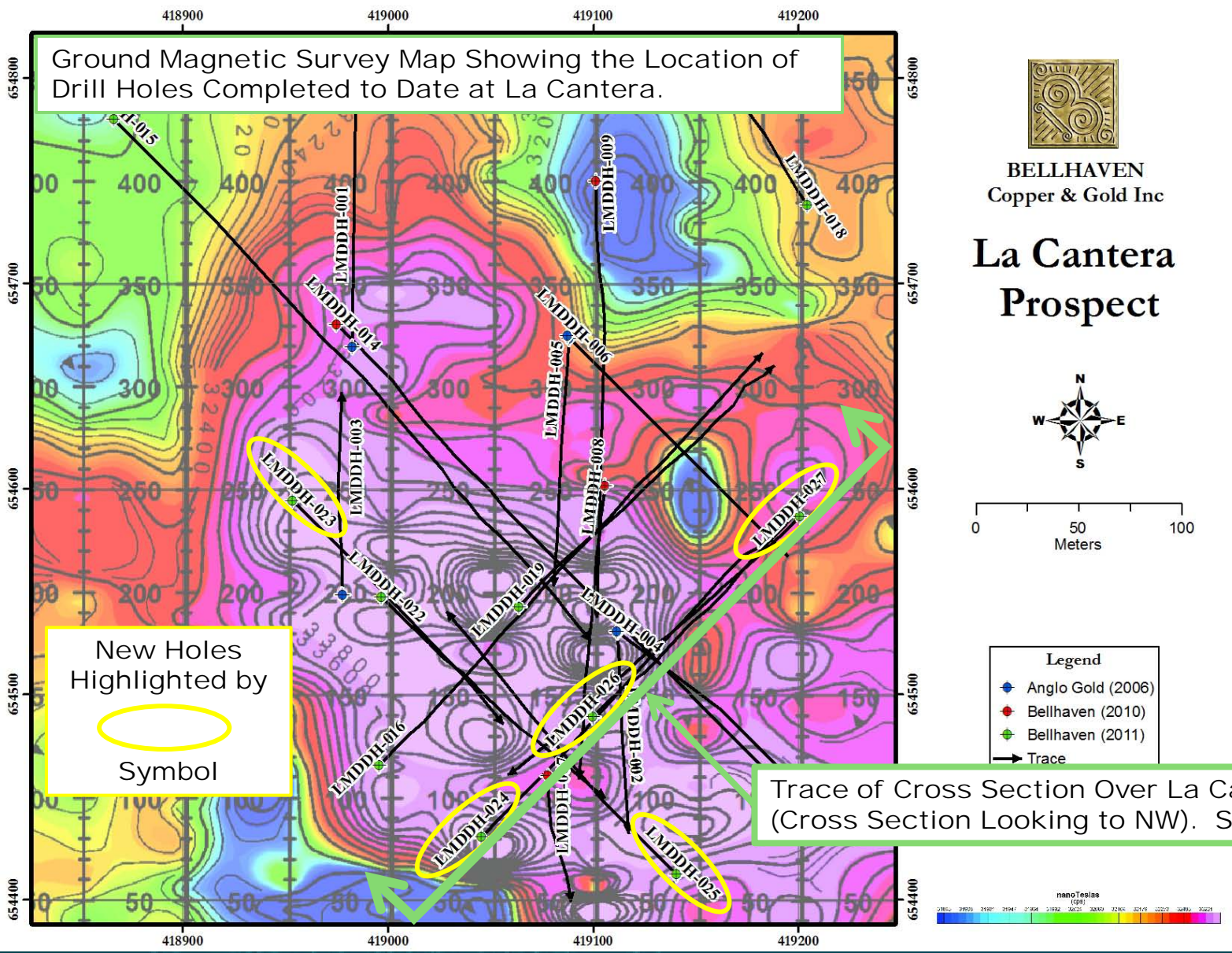


LOCATION MAP



La Mina – Drill-Hole Location Map

Ground Magnetic Survey Map Showing the Location of Drill Holes Completed to Date at La Cantera.



New Holes Highlighted by



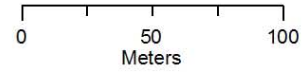
Symbol

Trace of Cross Section Over La Cantera Prospect (Cross Section Looking to NW). See Next Slide.



BELLHAVEN
Copper & Gold Inc

La Cantera Prospect

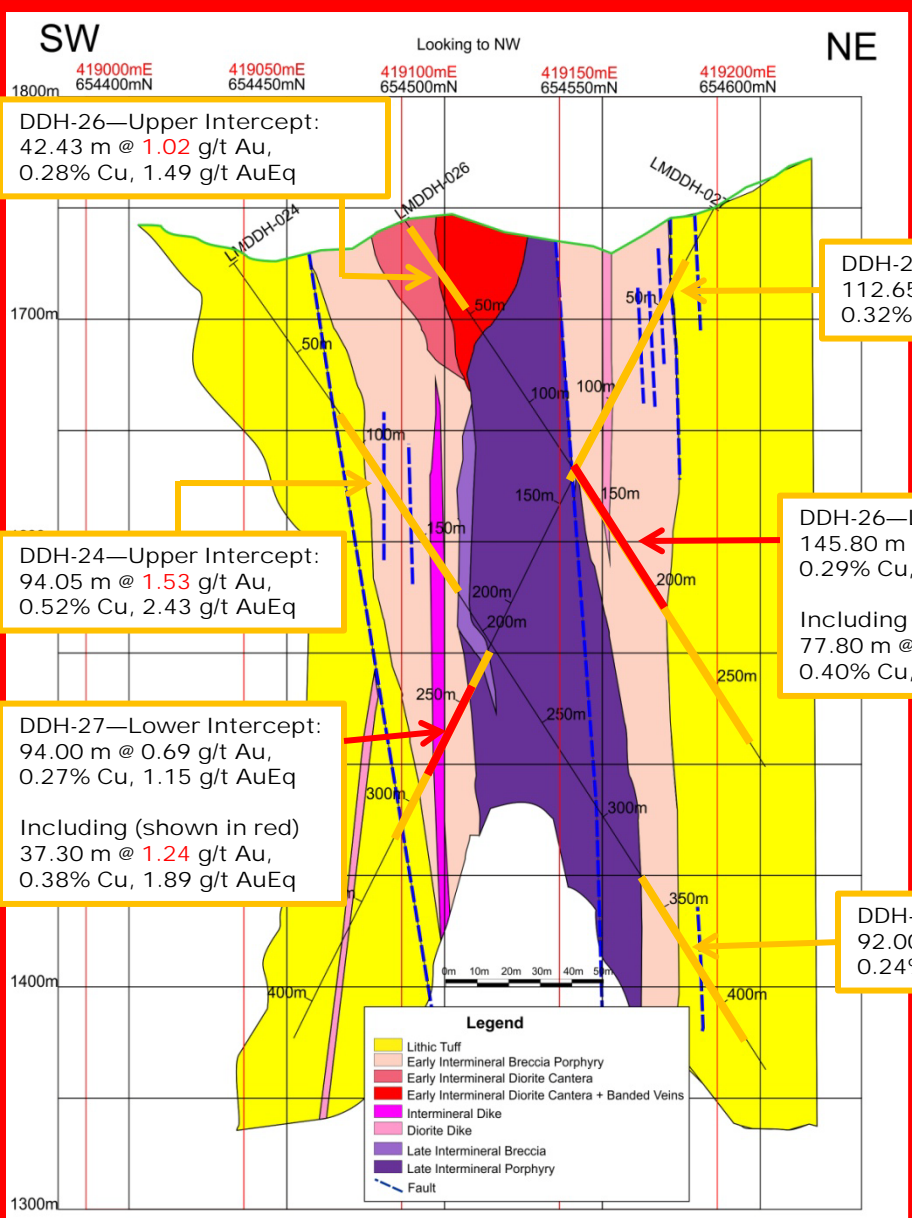


- Legend**
-  Anglo Gold (2006)
 -  Bellhaven (2010)
 -  Bellhaven (2011)
 -  Trace





La Mina – Cross Section (Looking to NW)



Cross section through the La Cantera prospect

Notes:

Gold-copper zone starts near the surface and remains open to depth.

Intercepts in orange calculated using a 0.40 g/t AuEq cut-off grade