

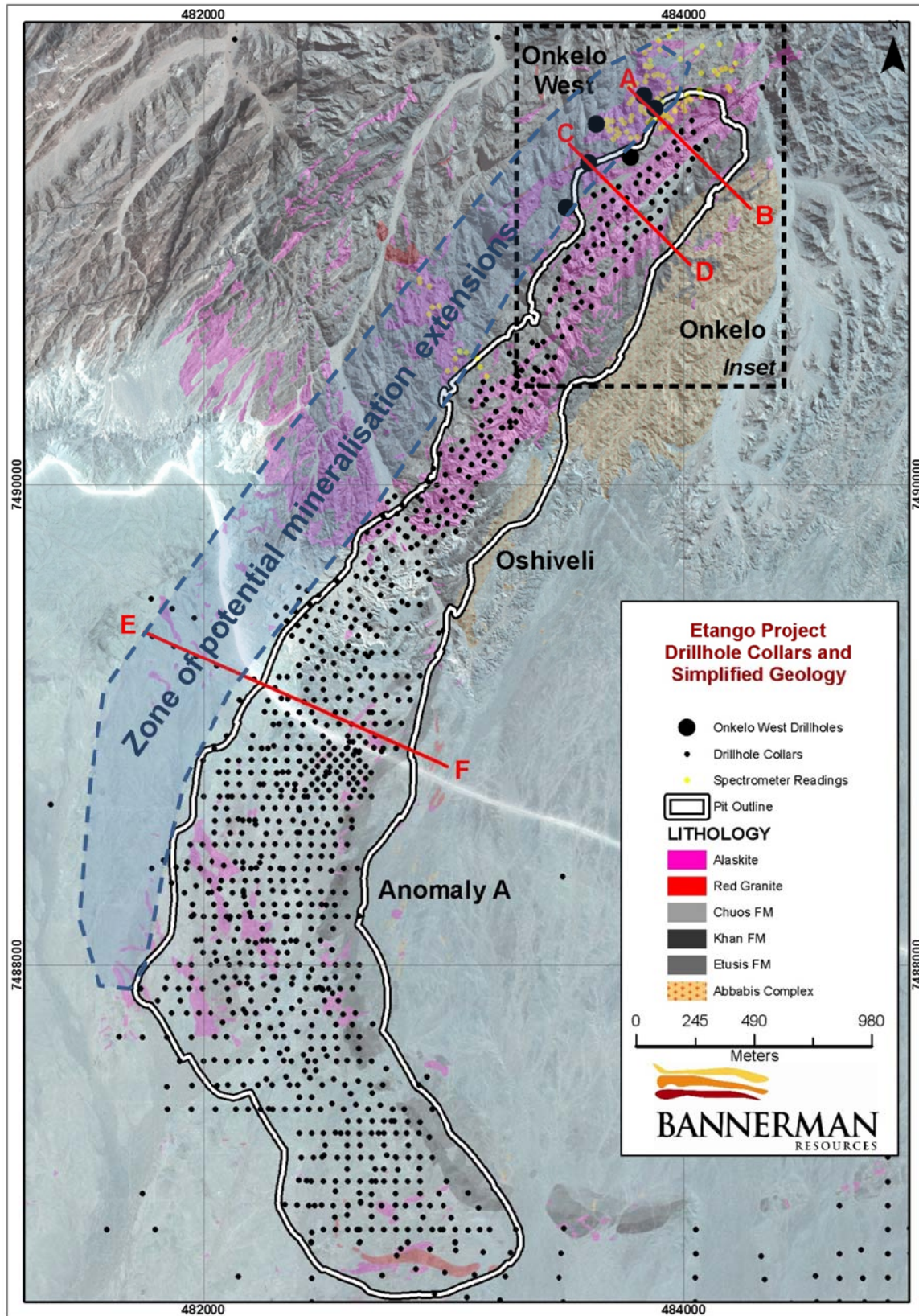
**Table 1  
Onkelo West Drilling**

**December 2011 & January 2012  
RC Drilling Results**

Hole ID	North	East	Depth (m down-hole)	Dip (°)	Azimuth	From (m down-hole)	To (m down-hole)	Interval (m)	U <sub>3</sub> O <sub>8</sub> (ppm)
GNKRC0093	7491619	483837	240	-60	135	Surface	11	11	143
GNKRC0093	"	"	"	"	"	52	72	20	107
GNKRC0093	"	"	"	"	"	79	103	24	171
GNKRC0093	"	"	"	"	"	159	178	19	124
GNKRC0093	"	"	"	"	"	212	226	14	194
GNKRC0094	7491619	483836	224	-90	0	65	81	16	144
GNKRC0095	7491564	483881	210	-60	125	38	48	10	123
GNKRC0095 <sup>2</sup>	"	"	"	"	"	88	91	3	426
GNKRC0095	"	"	"	"	"	173	206	33	93
GNKRC0096	7491339	483606	150	-60	135	3	17	14	107
GNKRC0096	"	"	"	"	"	38	96	58	105
GNKRC0097	7491339	483606	150	-80	135	58	69	11	156
GNKRC0097	"	"	"	"	"	82	124	42	116
GNKRC0098 <sup>2</sup>	7491153	483512	150	-60	135	127	129	2	262
GNKRC0099	7491499	483637	220	-60	135	1	13	12	96
GNKRC0099	"	"	"	"	"	36	90	54	83
GNKRC0100	7491362	483780	264	-60	135	Assay results awaited			

Notes to the drilling results table:

1. Reported drilling is by the reverse circulation (RC) drilling method utilising 122-129mm diameter bits.
2. All intercepts in excess of 10 metres at 75ppm U<sub>3</sub>O<sub>8</sub> with maximum 5m internal dilution are reported, except for GNKRC0095 88-91m and GKNRC0098 127-129m.
3. All reported intersections are downhole intervals, which are similar to true widths within the Etango Deposit.
4. Sample intervals are all of 1.0 metre length in the RC drillholes.
5. Sample sizes of ±1.0kg are sent to the sample preparation assay laboratory and, after pulverisation, a 200g sub-sample is derived for analysis. From this, 20g is used for the analysis. All quoted assays are by reputable certified laboratories.



**Figure 1:** The Etango Open Pit design boundaries, showing the drillhole locations and the locations of Sections A-B, C-D and E-F as illustrated in Figures 3-5.



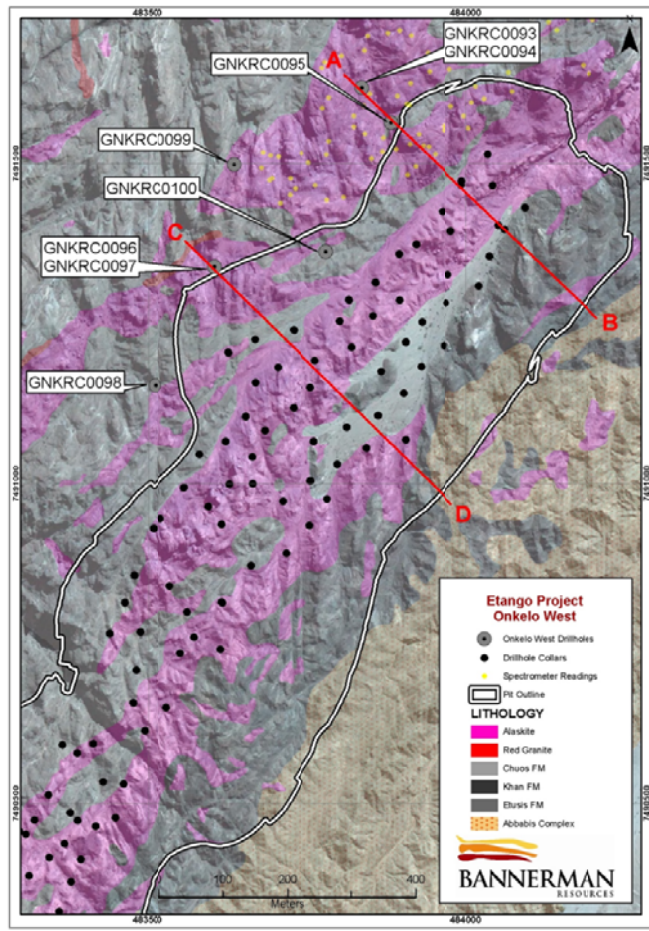


Figure 2: Onkelo West showing the locations of Sections A-B and C-D.

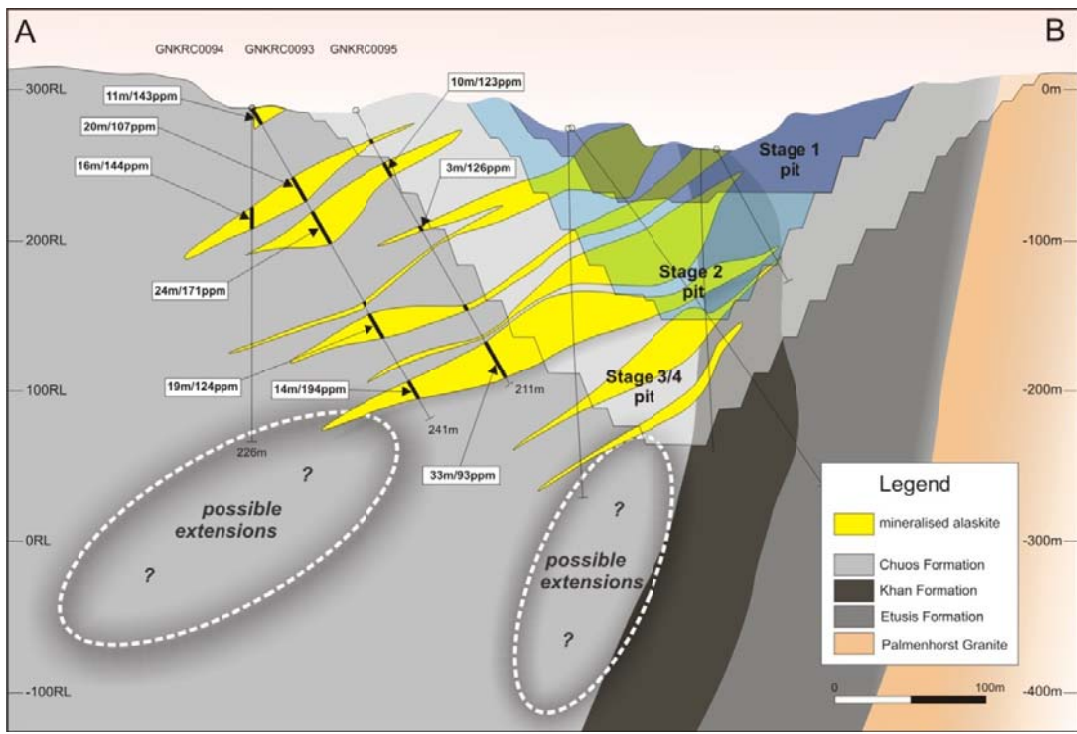
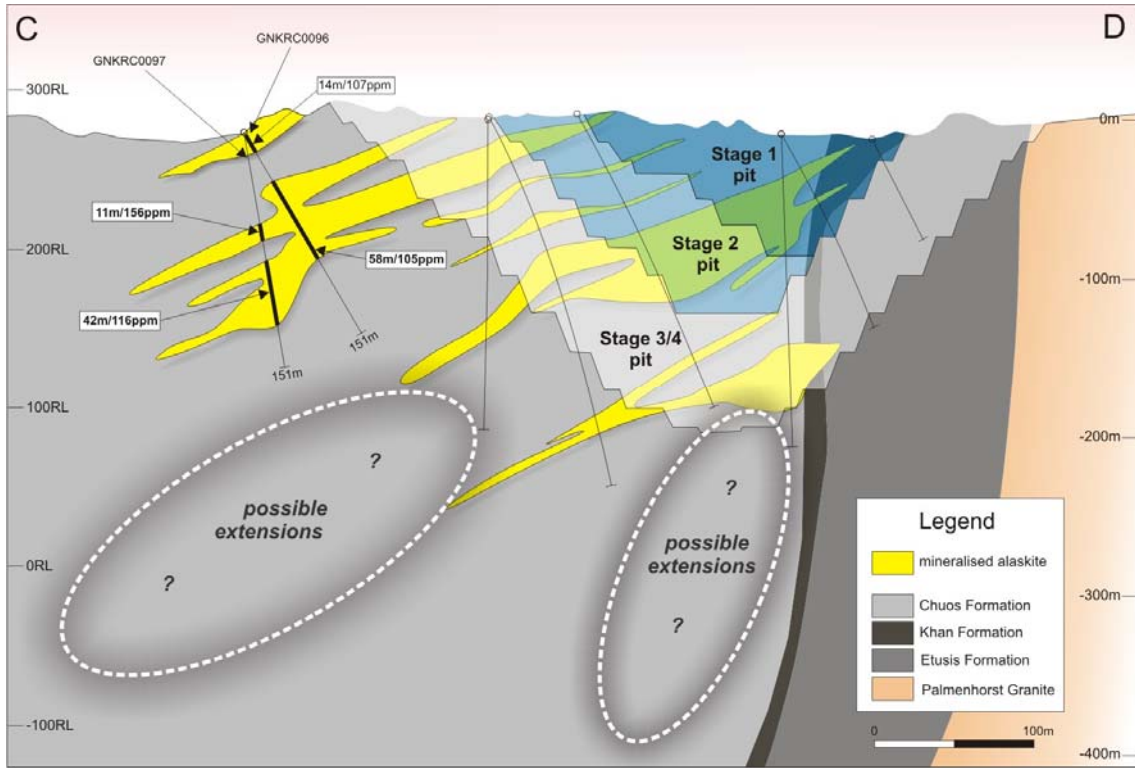
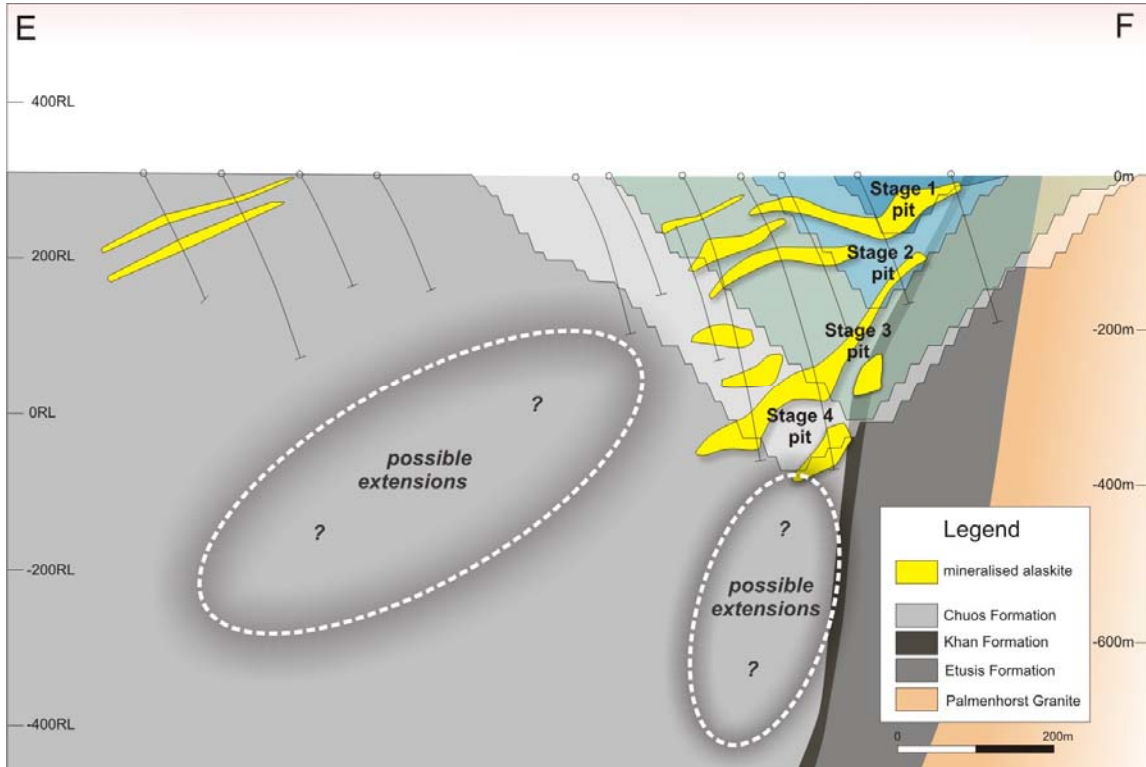


Figure 3: Section A-B showing the new drilling, the interpreted extension to the Etango Deposit and the staged open pit outlines.



**Figure 4:** Section C-D showing the new drilling, the interpreted extension to the Etango Deposit and the staged open pit outlines.



**Figure 5:** Section E-F showing the historical shallow western zone drilling, the interpreted extensions to the Etango Deposit and the staged open pit outlines.