

Fig 1: Location of REC-T-166 block.

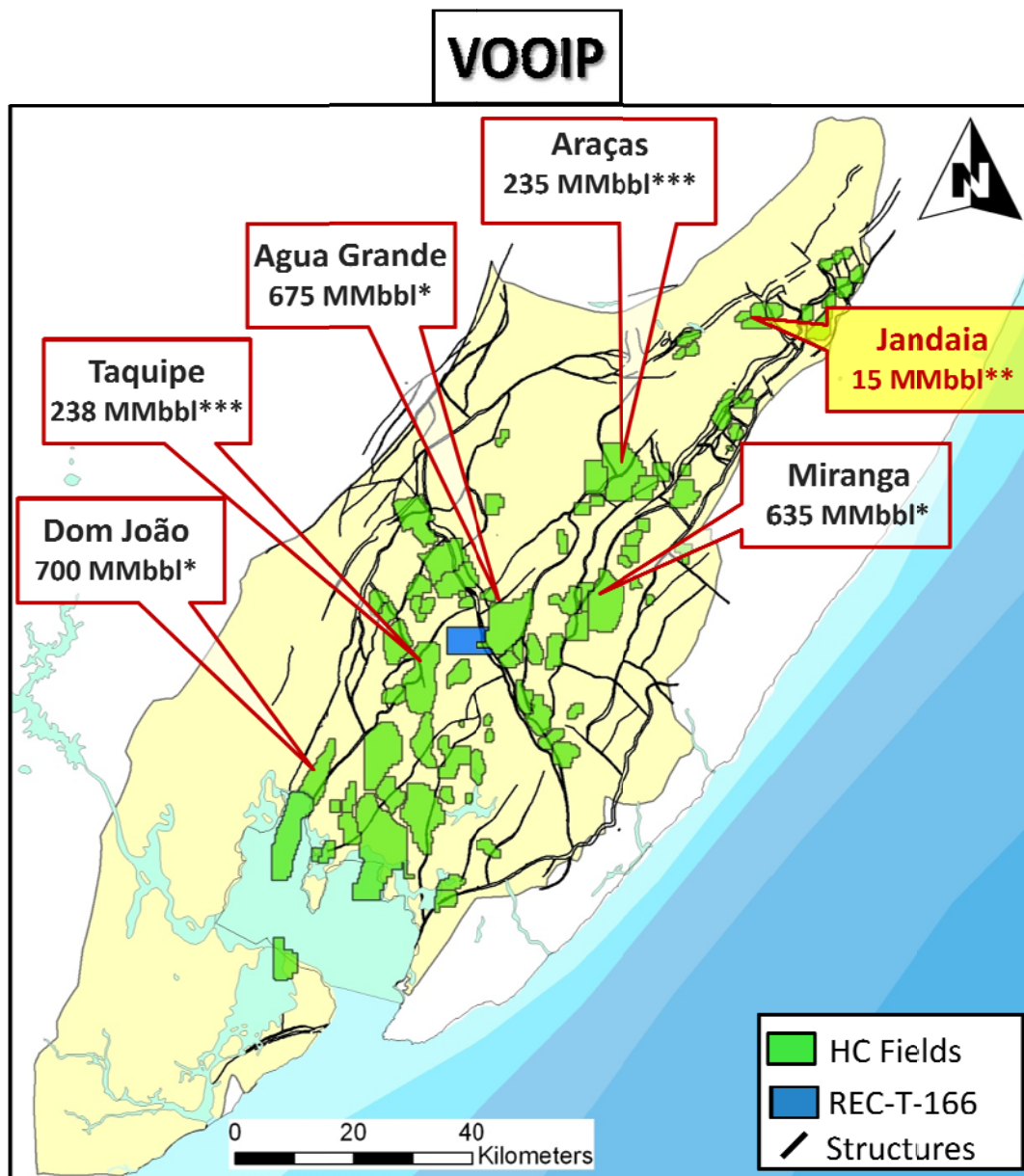


Fig 2: Recôncavo Basin and the original oil in place of its major fields.

* Data from Round 9 and Round 10 presentations (ANP).

** Data from Wagner Freire.

*** Data from BRAGA, J.A.E.; ZABALAGA, J.C.; OLIVEIRA, J.J.; AGUIAR, G.A.; SILVA, O.B.; MATO, L.F.; DANIEL, L.M.F. and MAGNAVITA, L.P. "Recôncavo Basin, Brazil: A Prolific Intracontinental Rift Basin".



SEQUENCE OF PETROLEUM EVENTS

- Pre-rift sequence deposition;
- Pre-rift sequence structures in grabens and horsts;
- Rift sequence deposition with associated slope structures (listric faults);
- End of the Rift sequence deposition/ Block inversion (Rotation in SW-NE axis).

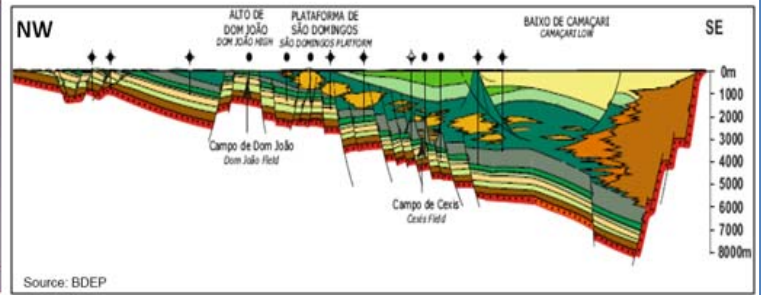


Fig 3: Petroleum Geology of the Recôncavo Basin.

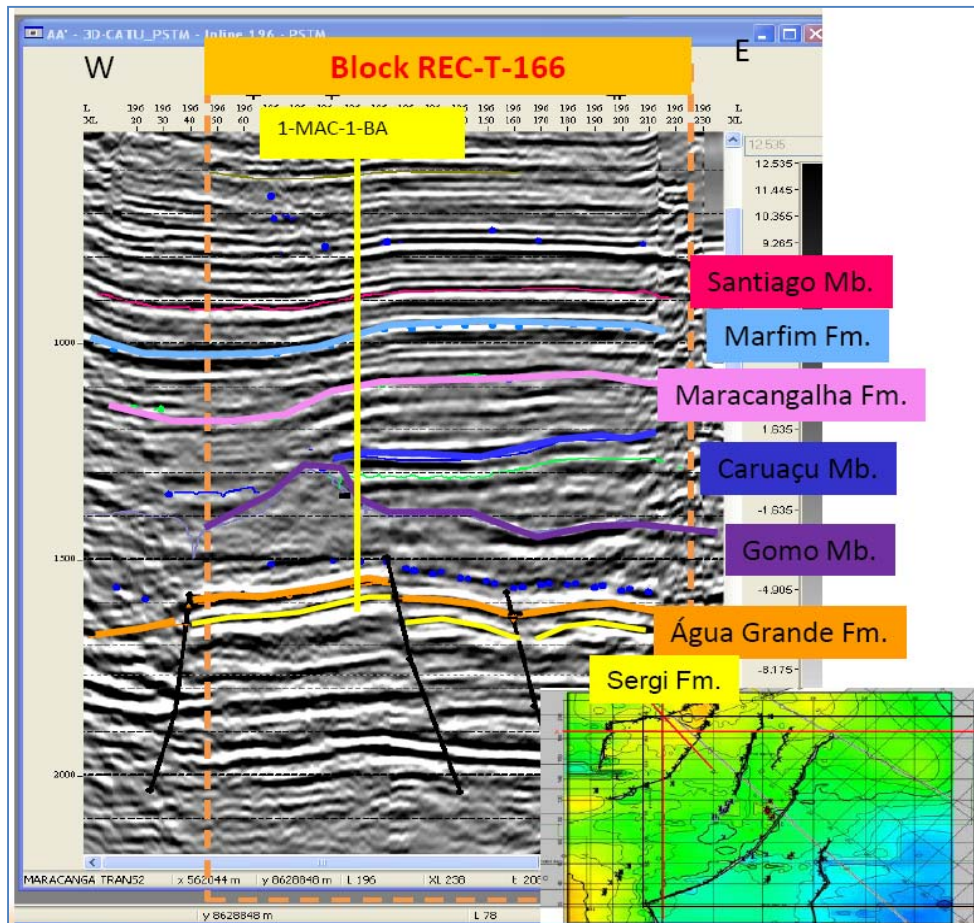


Fig 4: Seismic Section (depth) through the Macaúba Prospect (Main target is the Água Grande Fm.).