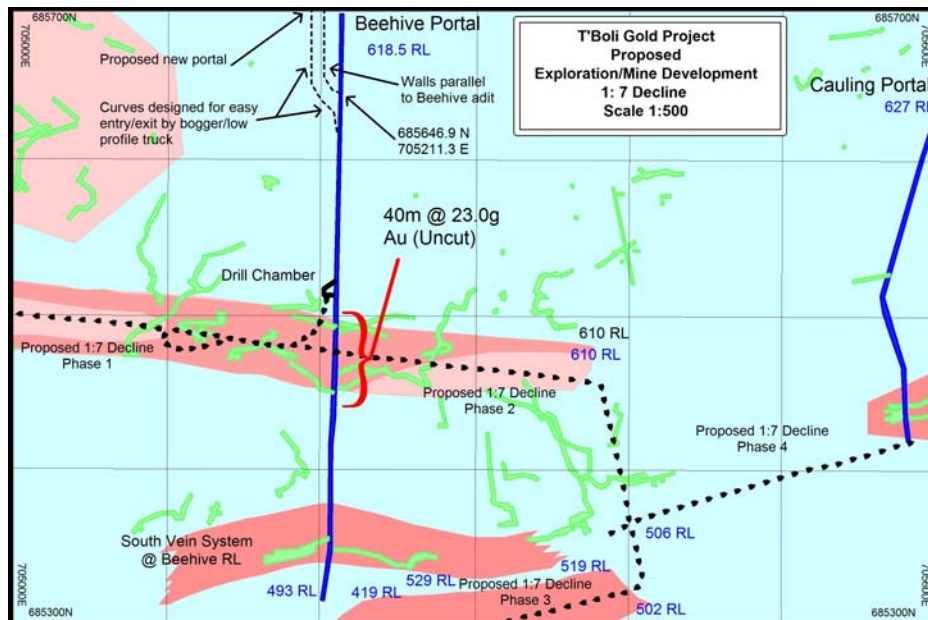




*Preparing for the first blast of the planned production-exploration decline to access part of a mineralized zone*

## DIAGRAM ONE

This highlights the existing Beehive Portal (blue line) with the new “Mafoko Portal” to the east (left) and the location of the first phase of the progressive development / production decline which cuts across a mineralized area of some 40m @ 23g/t gold (uncut).

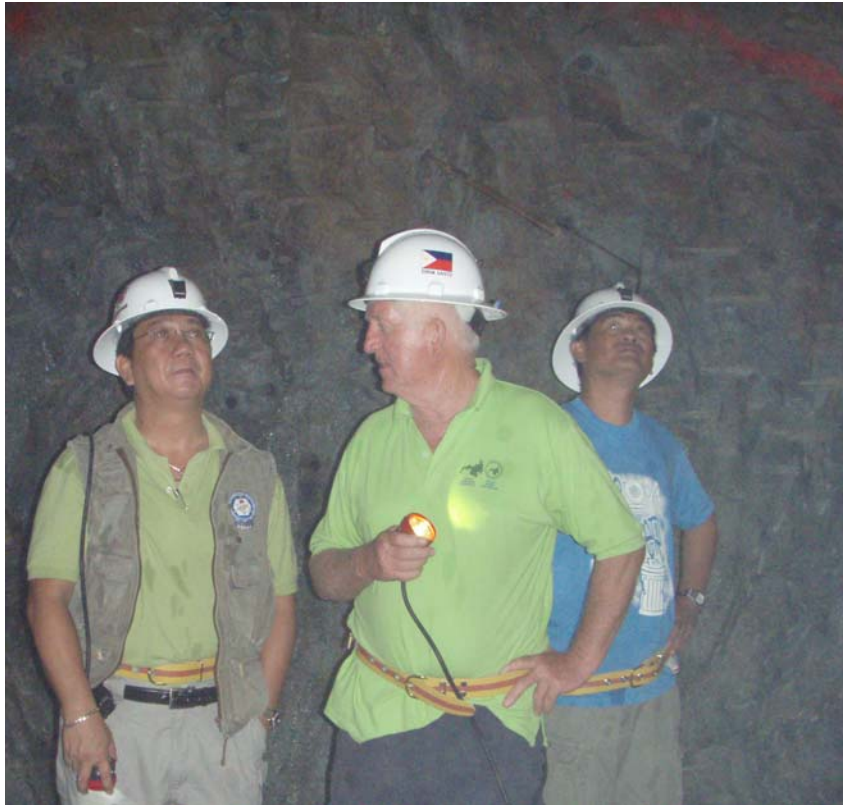


## PHOTOGRAPHS



**MAFOKO PORTAL** – is the new portal designed to provide access for mechanized mining: it is currently at some 14m with some 5m to go before blasting can occur out of a total distance of some 55m. *Below:* TMC President Edgar D Martinez (l) and Cadan Technical Director Bill Goode (c) with Mining Engineer Wally Abaga (r) inspecting the timber sets of the Mafoko Portal.





ABOVE: TMC President Edgar D Martinez (l) and Cadan Technical Director Bill Goode (c) with Mining Engineer Wally Abaga (r) inspecting the blast holes of the new development decline. *Below:* Underground miner drilling blast holes to widen the existing tunnel to provide access to mechanized underground mining equipment.



BELOW: The ventilation and alternative egress shaft which is being advanced some 100m ahead and to the east of the “Mafoko Portal” of the decline face. This shaft is being sunk on a gold lode and will provide early trial production when the advancing decline is connected.

