

Hole ID		From (m)	To (m)	Interval (m)	Au (g/t)	Local Azimuth	Dip
MGZD001		113.0	118.0	5.0	1.80	90.0	-50.0
		148.0	207.0	59.0	4.28		
	Including	154.0	166.0	12.0	4.18		
	Including	189.0	206.0	17.0	10.39		
MGZD002		239.0	242.0	3.0	1.53	90.0	-75.0
		255.0	272.6	17.6	0.93		
MGZD003		218.2	219.2	1.0	4.80	90.0	-61.0
MGZD004		110.0	137.0	27.0	2.82	90.0	-50.0
	Including	113.0	120.5	7.5	2.85		
	Including	127.0	137.0	10.0	5.15		
MGZD005		128.0	169.0	41.0	3.32	90.0	-65.0
	Including	128.0	144.0	16.0	3.34		
	Including	161.0	169.0	8.0	9.95		
MGZD006		157.0	160.8	3.8	1.31	90.0	-50.0
		200.7	202.0	1.3	3.02		
MGZD007		156.6	196.2	39.6	3.56	90.0	-79.0
	Including	156.6	170.1	13.5	4.01		
	Including	184.0	196.2	12.2	6.99		
MGZD008		55.0	71.0	16.0	1.47	90.0	-50.0
		90.0	93.6	3.6	5.65		
		119.0	136.7	17.0	0.83		
	Including	119.0	122.3	3.3	1.99		
MGZD009		61.0	66.0	5.0	1.55	90.0	-73.0
		175.0	177.7	2.7	10.95		
		216.0	226.7	10.7	1.45		
MGZD010		81.0	90.0	9.0	1.13	89.0	-50.0
MGZD011		139.0	181.1	42.1	2.42	90.0	-48.0
	Including	139.0	146.0	7.0	1.37		
	Including	157.3	181.1	23.8	3.86		
MGZD012		170.8	227.0	56.2	6.39	90.0	-59.0
	Including	170.8	189.0	18.2	7.98		
	Including	196.0	226.0	30.0	7.02		
MGZD013		175.0	178.0	3.0	1.26	92.0	-65.0
MGZD014		41.0	46.0	5.0	1.53	87.0	-61.5
		160.0	161.0	1.0	7.55		
MGZD015		149.0	154.0	5.0	2.10	87.0	-73.0
		200.0	210.0	10.0	2.76		
MGZD016		124.0	148.0	24.0	1.72	87.0	-81.0
	Including	135.0	140.0	5.0	5.17		
		170.0	172.0	2.0	2.13		
		236.7	246.0	9.3	3.72		
	Including	240.7	246.0	5.3	5.86		
	Including	240.7	244.2	3.5	8.30		
MGZD017		94.0	99.0	5.0	3.07	87.0	-81.0
MGZD018		21.0	24.7	3.7	2.25	10.0	-50.0
MGZD019		70.0	88.0	18.0	3.30	267.0	-50.0
	Including	70.0	78.0	8.0	5.68		
		100.0	103.0	3.0	3.04		
MGZD020		63.0	63.7	0.7	4.00	30.0	-90.0
MGZD021		158.0	166.1	8.1	0.53	103.0	-51.0
		216.0	217.0	1.0	22.4		
MGZD022		150.0	158.0	8.0	1.10	92.0	-65.0
MGZD023		22.0	27.4	5.4	1.44	267.0	-55.0
		54.7	85.0	30.3	3.46		
	Including	70.0	76.3	6.3	5.57		
MGZD024		64.4	72.4	8.0	3.25	267.0	-55.0
MGZD025		41.4	52.6	11.2	1.33	267.0	-55.0
		75.0	87.0	12.0	2.65		
MGZD026		87.7	95.7	8.0	1.73	267.0	-55.0
MGZD027		99.0	126.7	27.7	2.18	267.0	-55.0
	Including	99.0	106.4	7.4	4.05		

Hole ID		From (m)	To (m)	Interval (m)	Au (g/t)	Local Azimuth	Dip
MGZD028		180.0	191.0	11.0	2.03	275.0	-55.0
		200.0	202.1	2.1	5.58		
MGZD029		169.0	182.6	13.6	1.71	275.0	-55.0
	Including	177.0	182.6	5.6	3.27		
MGZD030	No significant results					270.0	-55.0
MGZD031		82.0	84.4	2.4	10.18	275.0	-55.0
MGZD032		73.0	83.1	10.1	1.23	275.0	-55.0
MGZD033		42.0	44.8	2.8	1.60	275.0	-55.0
MGZD034		43.0	58.4	15.4	1.85	275.0	-55.0
MGZD035		166.0	176.5	10.5	2.40	90.0	-55.6
	Including	168.1	174.4	6.3	3.12		
		201.0	217.0	16.0	5.46		
	Including	206.7	216.1	9.4	8.59		
MGZD036		202.0	207.4	5.4	5.10	90.0	-63.0
		219.0	267.0	48.0	2.67		
	Including	224.0	231.0	7.0	6.21		
		240.4	254.0	13.6	4.54		
MGZD037		132.0	136.0	4.0	1.04	90.0	-72.0
MGZD038		219.7	235.0	15.3	1.87	90.0	-65.0
	Including	219.7	226.4	6.7	2.64		
	Including	229.9	232.0	2.1	4.07		
MGZD039		199.0	202.5	3.5	1.69	90.0	-71.0
		233.3	249.2	15.9	2.00		
	Including	233.3	238.0	4.7	3.47		
	Including	245.0	249.2	4.2	3.11		
MGZD040		102.0	136.6	34.6	1.36	90.0	-90.0
	Including	103.0	115.0	12.0	2.83		
	Including	106.0	109.5	3.5	7.71		
		211.0	214.8	3.8	19.83		
MGZD041		191.0	198.0	7.0	4.71	98.0	-79.0
		228.4	233.7	5.3	1.74		
		278.0	280.1	2.1	2.85		
MGZD042		178.7	186.7	8.0	3.80	90.0	-58.0
		198.0	205.7	7.7	5.42		
		226.0	242.4	16.4	2.03		
	Including	226.0	230.2	4.2	5.87		
MGZD043		149.7	159.9	10.2	2.87	101.0	-75.0
		224.0	227.8	3.8	3.36		
		247.0	268.2	21.2	4.80		
	Including	247.0	258.0	11.0	7.90		
MGZD044		153.0	157.0	4.0	2.85	90.0	-68.0
		261.4	281.0	19.6	2.32		
	Including	261.4	272.9	11.5	3.16		
MGZD045		246.0	267.7	21.7	6.79	90.0	-81.5
	Including	246.0	255.5	9.5	12.75		
MGZD046		138.7	144.7	6.0	0.68	90.0	-64.5
MGZD047	No significant results					95.0	-62.4
MGZD048		109.0	169.0	60.0	1.67	93.0	-74.0
	Including	109.0	132.5	23.5	2.86		
MGZD049		146.1	147.7	1.6	1.72	94.0	-85.0
MGZD050	No significant results					270.0	-75.0
MGZD051		14.0	24.4	10.4	1.18	273.0	-73.0
MGZD052		39.7	50.0	10.3	1.99	267.0	-69.5
	Including	39.7	41.1	1.4	12.12		
MGZD053		52.0	85.0	33.0	3.39	265.0	-74.5
	Including	70.8	80.7	9.9	6.25		
MGZD054		33.7	40.0	6.3	0.92	272.0	-57.0
		55.0	70.0	15.0	1.29		
MGZD055		21.7	34.1	12.4	1.19	271.0	-62.0
		47.0	69.0	22.0	1.22		

Hole ID		From (m)	To (m)	Interval (m)	Au (g/t)	Local Azimuth	Dip
MGZD056		8.0	13.0	5.0	0.89	269.0	-55.0
		42.0	66.4	24.4	1.38		
	Including	42.0	53.1	11.1	2.29		
MGZD057	No significant results					275.0	-85.0
MGZD058		33.0	50.0	17.0	0.76	360.0	-89.0
	Including	45.4	50.0	4.6	1.56		
MGZD059		129.0	132.0	3.0	9.44	268.0	-41.0
MGZD060		82.0	89.4	7.4	2.32	270.0	-55.0
MGZD061		54.0	59.0	5.0	1.40	93.0	-74.6
MGZD062		100.0	122.4	22.4	0.99	88.0	-67.5
MGZD063		119.0	149.2	30.2	1.64	89.0	-79.5
MGZD064		269.0	271.0	2.4	1.36	91.0	-72.8
		257.0	259.1	2.1	1.60		
MGZD065	No significant results					90.0	-48.5
MGZD066		153.0	157.0	4.0	1.21	90.0	-64.5
		230.0	267.0	37.0	12.45		
		244.0	267.0	23.0	19.14		
		276.0	278.0	2.0	7.89		
MGZD067		54.7	123.0	68.3	1.90	90.0	-74.2
	Including	99.7	113.0	13.3	4.35		
MGZD068		55.7	89.0	33.3	2.46	91.0	-80.5
	Including	56.7	61.7	5.0	8.04		
		78.0	84.7	6.7	5.41		
MGZD069		85.0	91.0	6.0	1.36	94.5	-80.0
MGZD070		66.0	75.1	9.1	1.55	88.0	-49.5
	Including	73.0	75.1	2.1	6.04		
MGZD071		122.4	134.3	11.9	2.44	262.0	-85.5
	Including	128.7	133.6	4.9	3.33		
MGZD072		131.0	144.0	13.0	0.47	91.0	-44.5
	Including	142.0	144.0	2.0	1.42		
MGZD073		138.4	148.9	10.5	1.22	93.0	-71.0
	Including	140.5	148.2	7.7	1.55		
		182.0	214.0	32.0	9.27		
	Including	196.0	212.4	16.4	17.56		
MGZD074		267.0	268.0	1.0	1.00	90.0	-89.0
MGZD075		188.0	207.0	19.0	1.03	90.0	-63.0
	Including	204.0	207.0	3.0	3.12		
MGZD076		213.0	237.0	18.0	3.40	90.0	-73.0
	Including	223.7	231.0	7.3	5.70		
MGZD077		208.0	244.0	36.0	1.65	89.0	-78.0
	Including	214.6	233.0	18.4	3.01		
	Including	218.8	223.7	4.9	6.45		
MGZD078		143.0	145.0	2.0	7.45	117.0	-89.0
		274.4	276.0	1.6	1.08		
MGZD079		226.0	253.0	27.0	4.29	92.0	-73.0
	Including	239.0	253.0	14.0	6.21		
MGZD080		202.0	212.0	10.0	1.66	92.0	-66.0
MGZD081		146.7	152.7	6.0	0.93	90.0	-57.5
MGZD082		256.7	272.3	15.6	6.60	91.0	-67.0
	Including	261.0	271.6	10.6	8.39		
MGZD083		91.0	108.0	17.0	23.96	300.0	-89.0
	Including	102.0	108.0	6.0	27.30		
MGZD084		229.4	236.0	6.6	2.32	90.0	-65.0
		248.0	254.0	6.0	1.68		
		269.0	282.4	13.4	13.54		
	Including	269.0	275.0	6.0	29.40		
MGZD085		128.0	129.0	1.0	2.09	90.0	-68.0
MGZD086		122.0	124.0	2.0	2.78	89.0	-53.5
		150.0	155.0	5.0	5.38		
		218.0	223.0	5.0	1.34		

Hole ID		From (m)	To (m)	Interval (m)	Au (g/t)	Local Azimuth	Dip
MGZD087		197.0	226.0	29.0	1.18	96.5	-58.5
	Including	197.0	212.0	15.0	1.99		
MGZD088		222.0	237.0	15.0	4.19	92.0	-70.5
	Including	222.0	225.8	3.8	7.87		
		264.0	275.2	11.2	4.03		
	Including	264.7	268.2	3.5	6.97		
MGZD089		208.0	211.5	3.5	4.84	92.0	-54.5
MGZD090		264.3	269.9	5.6	5.22	90.0	-72.0
MGZD091	No significant results					90.0	-45.0
MGZD092	No significant results					90.0	-67.0
MGZD093		205.9	236.0	30.1	1.55	89.0	-60.5
MGZD094		89.0	91.0	2.0	1.77	92.0	-78.0
		119.0	121.0	2.0	2.30		
MGZD095		139.0	144.0	5.0	1.47	92.0	-56.5
		159.0	167.4	8.4	1.73		
MGZD096		141.0	189.6	48.6	14.81	87.0	-54.0
	Including	141.0	153.0	12.0	1.55		
	Including	172.8	189.6	16.8	41.51		
		180.5	188.9	8.4	80.90		
MGZD097		244.0	261.1	17.1	1.44	88.5	-78.0
MGZD098		142.0	143.0	1.0	19.80	90.5	-61.5
		203.2	256.4	53.2	9.51		
	Including	231.2	255.0	23.8	15.08		
MGZD099		180.0	184.5	4.5	2.46	88.0	-61.0
		224.0	241.4	17.4	6.10		
	Including	230.7	237.0	6.3	14.35		
		261.0	263.8	2.8	4.41		
MGZD100	No significant results					268.5	-61.0
MGZD101		151.0	155.0	4.0	4.46	51.0	-87.0
		239.7	245.3	5.6	1.86		
		261.0	263.7	2.7	2.24		
		294.0	301.0	7.0	5.81		
MGZD102	No significant results					269.5	-47.5
MGZD103		142.0	145.0	3.0	2.83	89.5	-61.5
		177.6	192.0	14.4	1.42		
		208.0	214.3	6.3	1.28		
MGZD104		63.4	77.4	14.0	1.38	88.0	-75.0
	Including	63.4	67.6	4.2	2.89		
MGZD105		14.0	23.1	9.1	1.28	90.0	-72.0
MGZD106		35.1	38.6	3.5	1.03	90.0	-65.0
MGZD107		204.0	252.3	48.3	7.14	89.0	-61.0
	Including	230.6	248.1	17.5	14.61		
MGZD108		32.4	42.9	10.5	0.79	268.5	-55.0
	Including	32.4	36.6	4.2	1.23		
		62.3	64.4	2.1	2.34		
		79.7	81.8	2.1	1.80		
MGZD109		91.0	94.0	3.0	1.27	269.0	-57.0
MGZD110		9.5	16.5	7.0	1.37	271.5	-69.0
		31.1	42.3	11.2	3.35		
MGZD111		8.0	22.1	14.1	1.15	270.0	-52.0
		32.6	38.1	5.5	1.20		
MGZD112	No significant results					269.0	-54.5
MGZD113		15.1	28.4	13.3	1.30	269.5	-53.5
	Including	20.7	28.4	7.7	1.61		
MGZD114		14.4	17.9	3.5	1.28	270.0	-55.5
		22.1	34.0	11.9	0.98		
		48.7	51.5	2.8	1.74		
MGZD115	No significant results					271.0	-55.0
MGZD116		59.0	69.0	10.0	1.47	89.5	-64.5
MGZD117		112.3	121.0	8.7	38.76	83.5	-86.0

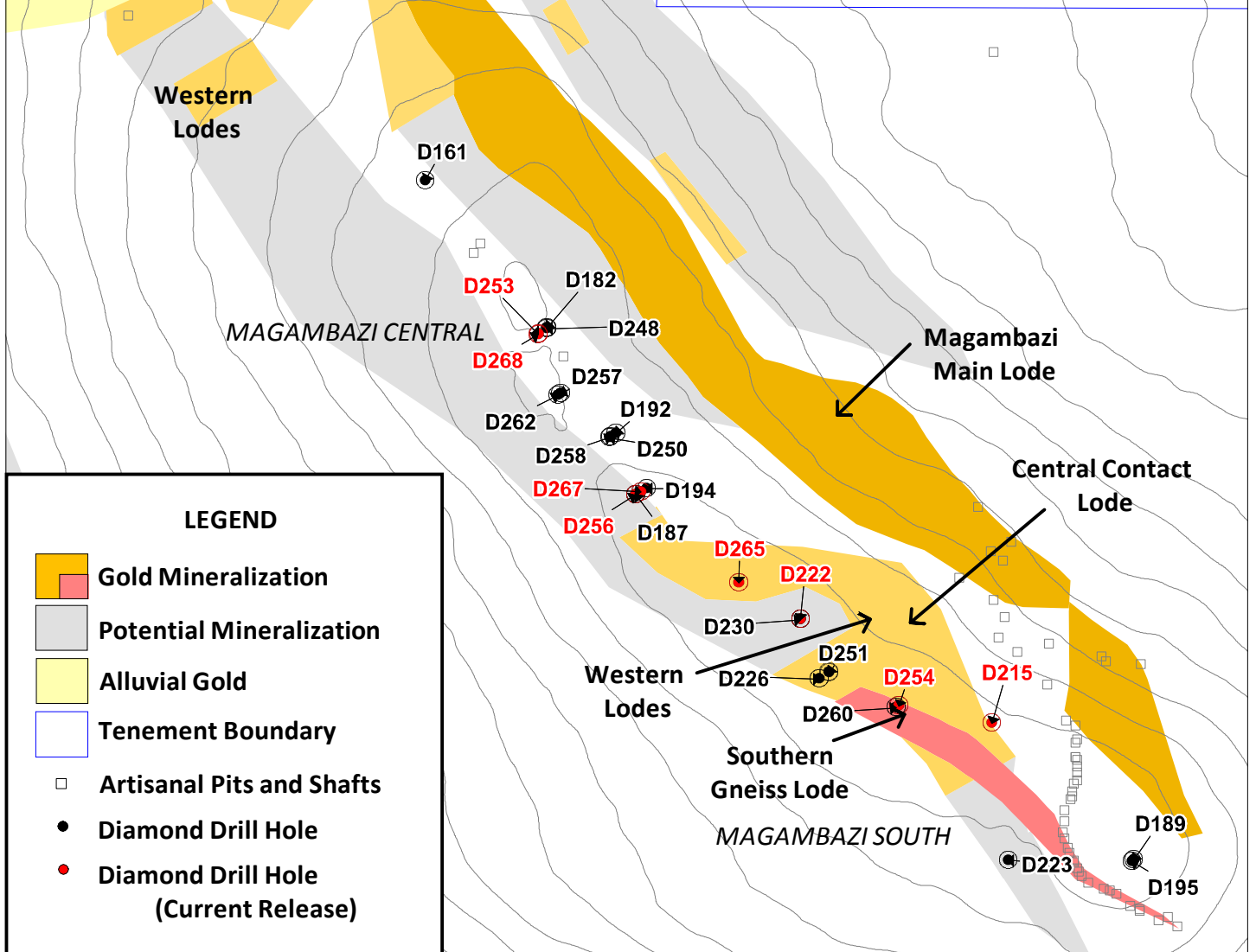
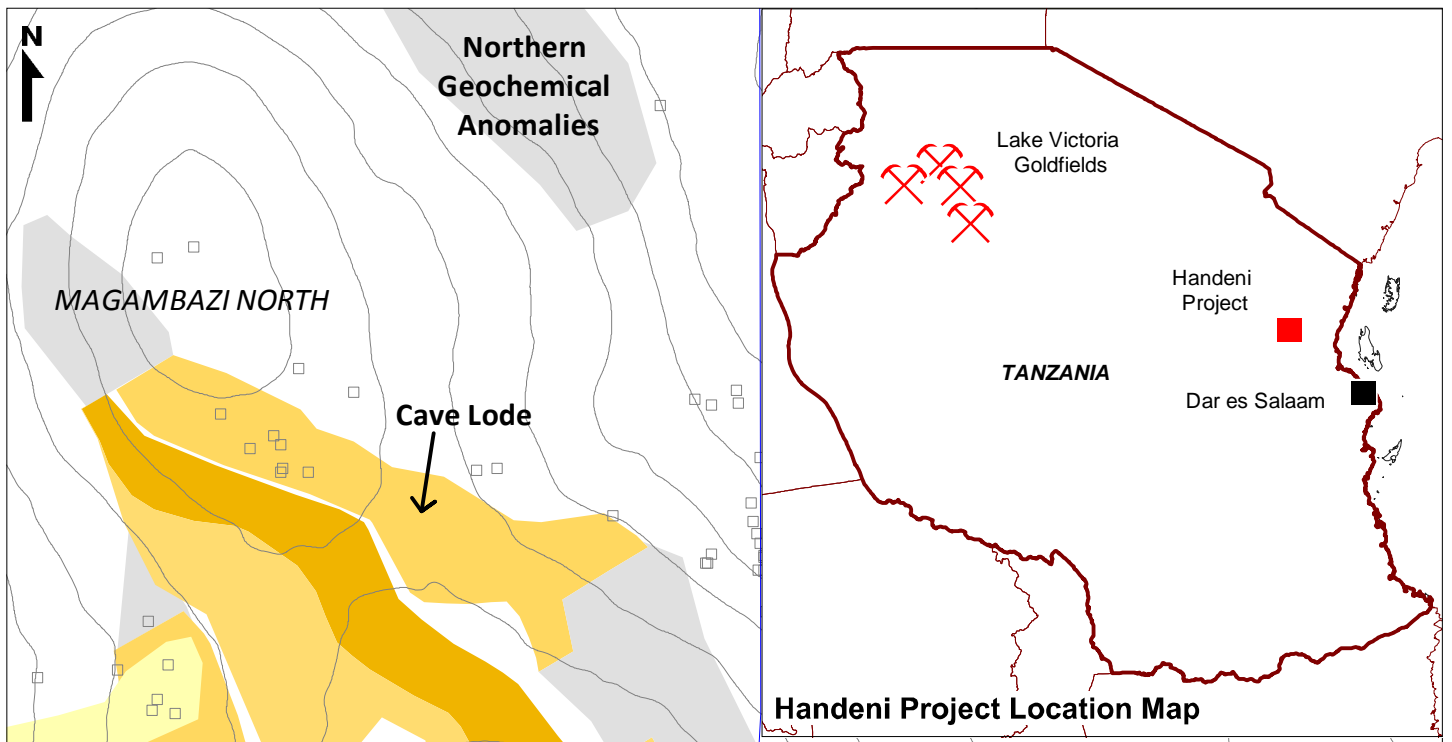
Hole ID		From (m)	To (m)	Interval (m)	Au (g/t)	Local Azimuth	Dip
MGZD118		42.0	76.5	34.5	2.04	270.0	-46.0
	Including	42.0	59.7	17.7	2.72		
	Including	66.0	76.5	10.5	1.97		
MGZD119		88.3	91.8	3.5	2.06	271.0	-55.0
MGZD120	No significant results					88.0	-62.5
MGZD121	No significant results					90.0	-53.0
MGZD122		91.7	93.8	2.1	2.82	250.5	-82.0
		110.7	118.0	7.3	2.31		
MGZD123		23.0	25.7	2.7	2.38	92.0	-84.0
		53.0	61.0	8.0	2.60		
		76.0	80.0	4.0	4.45		
		98.0	107.4	9.4	3.98		
MGZD124		83.0	87.0	4.0	6.63	260.5	-71.5
		129.5	143.0	13.5	2.02		
	Including	129.5	133.0	3.5	3.71		
MGZD125		90.1	119.5	29.4	1.71	89.0	-78.0
	Including	111.8	116.7	4.9	5.44		
MGZD126		34.0	38.0	4.0	1.18	91.5	-66.5
		68.0	71.0	3.0	1.38		
		154.0	158.2	4.2	8.94		
MGZD127		101.6	114.0	12.4	1.16	89.0	-44.5
	Including	111.0	114.0	3.0	2.43		
MGZD128		238.0	261.9	23.9	1.25	88.0	-69.0
	Including	238.0	243.2	5.2	2.74		
MGZD129		283.0	300.5	17.5	7.29	47.5	-89.5
	Including	296.0	300.5	4.5	17.42		
MGZD130		70.0	71.0	1.0	3.05	269.0	-73.0
MGZD131		209.0	211.0	2.0	1.95	90.0	-81.0
		269.0	275.2	6.2	3.92		
	including	272.4	275.2	2.8	7.32		
		316.0	317.0	1.0	18.9		
MGZD132		284.0	295.4	11.4	1.3	88.0	-82.5
	including	289.0	291.4	2.4	4.0		
MGZD134		195.7	230.0	34.3	2.01	90.0	-82.0
	Including	221.6	229.3	7.7	6.19		
		271.0	276.0	5.0	1.47		
MGZD135		140.0	152.0	12.0	2.86	90.5	-80.5
		140.7	146.3	5.6	5.78		
		262.7	266.2	3.5	2.73		
MGZD136		244.0	247.0	3.0	1.61	250.0	-89.0
		259.7	261.8	2.1	2.34		
		289.7	294.0	4.3	3.21		
MGZD137	No significant results					88.5	-75.0
MGZD138		56.4	72.5	16.1	1.03	91.5	-45.0
	Including	69.7	71.8	2.1	3.54		
MGZD139	No significant results					88.5	-60.0
MGZD140		51.0	52.0	1.0	1.14	90.5	-46.0
MGZD141		59.0	63.0	4.0	1.01	88.0	-46.0
MGZD142		187.4	191.0	3.6	2.08	91.6	-73.0
MGZD143	No significant results					91.0	-56.5
MGZD144		78.5	88.3	9.8	3.00	93.0	-62.0
MGZD145		28.0	30.0	2.0	1.95	88.5	-44.5
		95.0	97.0	2.0	1.09		
MGZD146		116.0	117.0	1.0	1.5	91.0	-58.5
MGZD147		139.5	157.7	18.2	3.24	89.5	-64.7
	Including	139.5	145.1	5.6	6.94		
MGZD148		246.0	250.0	4.0	0.90	87.0	-53.0

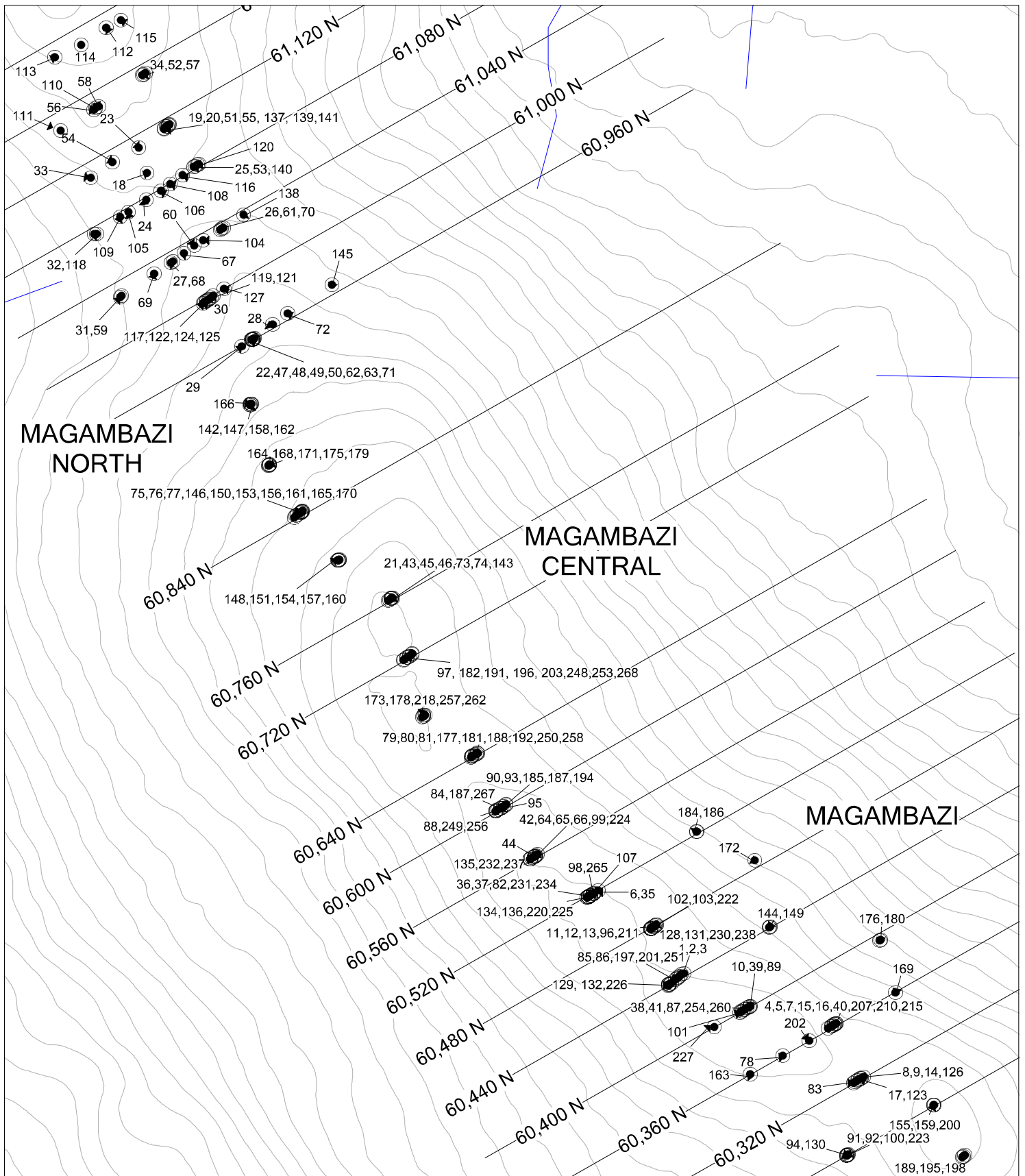
Hole ID		From (m)	To (m)	Interval (m)	Au (g/t)	Local Azimuth	Dip
MGZD149		67.7	89.4	21.7	4.70	89.0	-46.0
	Including	78.9	84.5	5.6	10.59		
MGZD150	No significant results					90.0	-55.0
MGZD151		194.7	196.1	1.4	5.70	91.0	-65.5
MGZD152		72.0	129.7	57.7	3.02	88.5	-53.5
	Including	72.0	98.0	26.0	5.33		
MGZD153		211.0	245.2	34.2	3.71	91.0	-69.0
	Including	227.0	238.9	11.9	6.99		
MGZD154		16.0	20.0	4.0	1.96	88.5	-73.5
		231.8	241.6	9.8	3.62		
	including	238.1	240.9	2.8	7.78		
MGZD155		63.0	70.0	7.0	2.40	87.0	-60.5
MGZD156		220.0	222.4	2.4	3.37	140.0	-90.0
MGZD157		230.4	239.5	9.1	4.30	88.0	-81.0
	Including	232.5	238.0	5.6	6.01		
MGZD158	No significant results					89.0	-54.5
MGZD159		66.0	69.1	3.1	3.16	92.0	-48.5
MGZD160		224.8	231.8	7.0	1.49	191.0	-90.0
MGZD161		169.7	187.2	17.5	2.95	273.0	-80.0
	Including	183.0	187.2	4.2	7.89		
		215.0	238.7	23.7	1.23		
	Including	221.0	226.1	5.1	2.92		
MGZD162		151.0	168.0	17.0	2.90	89.0	-82.0
	Including	156.2	159.0	2.8	9.90		
MGZD163		257.0	260.0	3.0	30.20	59.5	-89.0
MGZD164		194.0	201.0	7.0	1.86	91.5	-43.5
	Including	198.0	201.0	3.0	3.67		
MGZD165		156.0	159.0	3.0	1.71	269.5	-70.6
		226.0	227.0	1.0	5.28		
MGZD166		156.6	159.0	2.4	1.07	130.0	-90.0
MGZD168	No significant results					88.0	-59.5
MGZD169		60.3	67.0	6.7	0.67	91.0	-55.0
MGZD170	No significant results					269.0	-61.0
MGZD171	No significant results					88.0	-72.0
MGZD172		23.0	63.0	40.0	2.93	87.5	-50.5
	Including	23.0	27.9	4.9	4.32		
	including	55.3	63.0	7.7	4.89		
MGZD173		160.7	167.0	6.3	1.17	90.5	-62.5
		214.7	219.6	4.9	1.07		
		237.0	239.0	2.0	2.64		
MGZD175		177.7	203.0	25.3	1.08	88.5	-83.0
	Including	195.9	197.3	1.4	5.46		
MGZD176	No significant results					88.0	-48.5
MGZD177		99.0	100.0	1.0	3.17	90.0	-45.5
MGZD178		229.0	278.0	49.0	3.92	91.0	-71.5
	Including	229.0	238.3	9.3	11.62		
		268.0	278.0	10.0	5.34		
MGZD179	No significant results					68.0	-90.0
MGZD180	No significant results					90.5	-57.5
MGZD181		158.7	166.4	7.7	1.51	88.5	-69.0
		177.8	192.0	14.2	3.49		
	Including	178.5	184.1	5.6	7.66		
		232.0	236.2	4.2	1.91		
MGZD182		143.0	144.4	1.4	1.30	92.5	-58.5
		152.1	154.9	2.8	1.56		
MGZD184		73.0	77.2	4.2	3.08	92.0	-59.5
MGZD185	No significant results					91.5	-46.0
MGZD186	No significant results					88.0	-44.5
MGZD187		150.0	153.0	3.0	0.95	86.0	-76.5

Hole ID		From (m)	To (m)	Interval (m)	Au (g/t)	Local Azimuth	Dip
MGZD188		237.0	256.1	19.1	2.59	90.0	-77.5
	Including	237.0	240.1	3.1	9.86		
MGZD189		101.0	104.0	3.0	2.26	88.5	-45.5
MGZD191		139.1	153.1	14.0	4.13	87.0	-66.0
MGZD192		142.0	143.0	1.0	1.47	90.0	-53.0
MGZD194		166.4	167.1	0.7	1.28	91.5	-53.0
MGZD195		100.0	120.0	20.0	1.70	88.5	-55.5
	Including	116.0	120.0	4.0	3.63		
MGZD196		186.0	215.8	29.8	2.03	89.0	-69.0
	Including	189.1	196.8	7.7	6.11		
MGZD197		247.1	294.1	47	1.8	64.0	-85.5
	Including	247.1	249.2	2.1	15.1		
		287.8	294.1	6.3	4.41		
MGZD198		136	150	14	2.06	88.5	-65.0
	Including	138.8	144.4	5.6	4.21		
MGZD200*		100.7	102.8	2.1	1.27	90.0	-77.5
		116.0	124.0	8.0	0.84		
MGZD201*		183.7	198	14.3	4.46	90.0	-79.5
	Including	190.7	194.2	3.5	15.79		
MGZD202*		266.0	269.8	3.8	2.03	120.0	-89.5
MGZD203		235.1	255.4	20.3	6.93	89.0	-74.0
MGZD207*		118.7	150.0	31.3	3.11	90.5	-55.0
	including	132.1	135.6	3.5	7.90		
MGZD210*		149.1	154.0	4.9	5.48	91.5	-65.5
		167.7	182.0	14.3	3.39		
	Including	176.1	180.3	4.2	7.73		
MGZD211		235.0	247.1	12.1	1.31	250.0	-90.0
	Including	245.0	247.1	2.1	4.36		
		278.0	294.9	16.9	3.25		
MGZD215*		217.7	239.4	21.7	2.74	88.0	-77.8
	Including	224.0	230.3	6.3	6.51		
MGZD218*		162.4	167.3	4.9	1.27	88.0	-66.5
		179.7	208.4	28.7	2.72		
	Including	179.7	188.8	9.1	7.62		
		227	231.1	4.1	3.62		
MGZD220		135.0	142.0	7.0	1.95	90.5	-78.0
	Including	137.0	140.0	3.0	3.87		
		261.7	264.5	2.8	9.12		
MGZD221		205.0	206.0	1.0	2.90	87.5	-77.5
MGZD222		255.0	290.0	35.0	6.45	91.0	-87.5
MGZD223	No significant results					268.5	-89.0
MGZD224*		195	225	30	2.83	88.0	-86.5
	Including	213	219.5	6.5	9.71		
		253	278.1	25.1	2.31		
MGZD225*		256.0	257.0	1.0	9.48	86.5	-86.0
		281.7	286.6	4.9	1.81		
MGZD226*		289.8	291.2	1.4	5.97	270.5	-86.5
MGZD227*		281.0	292.0	11.0	2.20	70.0	-88.5
	Including	283.0	284.0	1.0	20.40		
MGZD230*		242.2	249.2	7.0	3.03	271.0	-87.0
	Including	244.3	245.7	1.4	11.43		
MGZD231*		240.0	241.0	1.0	4.57	270.0	-80.5
MGZD232*		194	213.4	19.4	1.12	67.0	-88.5
	Including	205.7	208	2.3	5.14		
		253	287	34	1.88		
	Including	253	260.4	7.4	5.87		
MGZD234*		294.0	297.0	3.0	7.04	266.5	-85.5

Hole ID		From (m)	To (m)	Interval (m)	Au (g/t)	Local Azimuth	Dip
MGZD237*		254.0	269.0	15.0	1.13	271.0	-85.0
	Including	256.1	258.2	2.1	3.34		
MGZD238*		292.7	305.0	12.3	1.73	268.5	-83.0
	Including	292.7	294.1	1.4	8.13		
MGZD248*		159.5	162.3	2.8	2.74	88.5	-51.5
MGZD249*		249.0	260.0	11.0	1.37	90.0	-82.0
	Including	253.0	254.0	1.0	8.28		
MGZD250*		217.0	223.0	6.0	1.68	87.0	-84.5
		239.0	244.0	5.0	1.52		
MGZD251*		235.9	242.2	6.3	1.41	88.0	-62.5
	Including	240.8	242.2	1.4	4.34		
MGZD253*		241.0	256.1	15.1	3.27	267.0	-87.5
	Including	248.7	256.1	7.4	6.05		
MGZD254*		254.0	270.7	16.7	3.13	87.0	-75.5
	Including	263.7	270.7	7.0	5.87		
MGZD256*		193.4	221.8	28.4	3.01	88.0	-87.0
	Including	219.0	221.1	2.1	23.67		
		267.0	274.0	7.0	3.58		
MGZD257*		153.6	157.1	3.5	1.64	87.5	-57.5
MGZD258*		207.0	210.0	3.0	4.59	270.0	-89.5
		253.0	260.0	7.0	3.61		
MGZD260*		172.0	187.0	15.0	1.77	87.5	-83.5
	Including	172.0	176.2	4.2	3.89		
		255.7	270.0	14.3	1.06		
MGZD262*		235.7	261.8	26.1	0.85	88.0	-84.0
MGZD265*		154.4	209.7	55.3	3.18	92.0	-52.5
	Including	178.9	199.9	21.0	6.33		
	Including	179.6	188.7	9.1	8.81		
MGZD267*		173.7	196.0	22.3	3.12	91.0	-63.5
	Including	189.4	194.3	4.9	9.89		
MGZD268*		251.0	267.5	16.5	3.01	269.5	-78.0
	Including	264.7	267.5	2.8	10.03		
		294.0	299.5	5.5	9.39		
	Including	297.4	299.5	2.1	23.24		

* Only partial assay results received for this hole





MAGAMBAZI
NORTH

MAGAMBAZI
CENTRAL

MAGAMBAZI



MAGAMBAZI PROJECT, TANZANIA DRILL COLLAR LOCATIONS

● Drill Collar Location

100 metres
October 14, 2011