

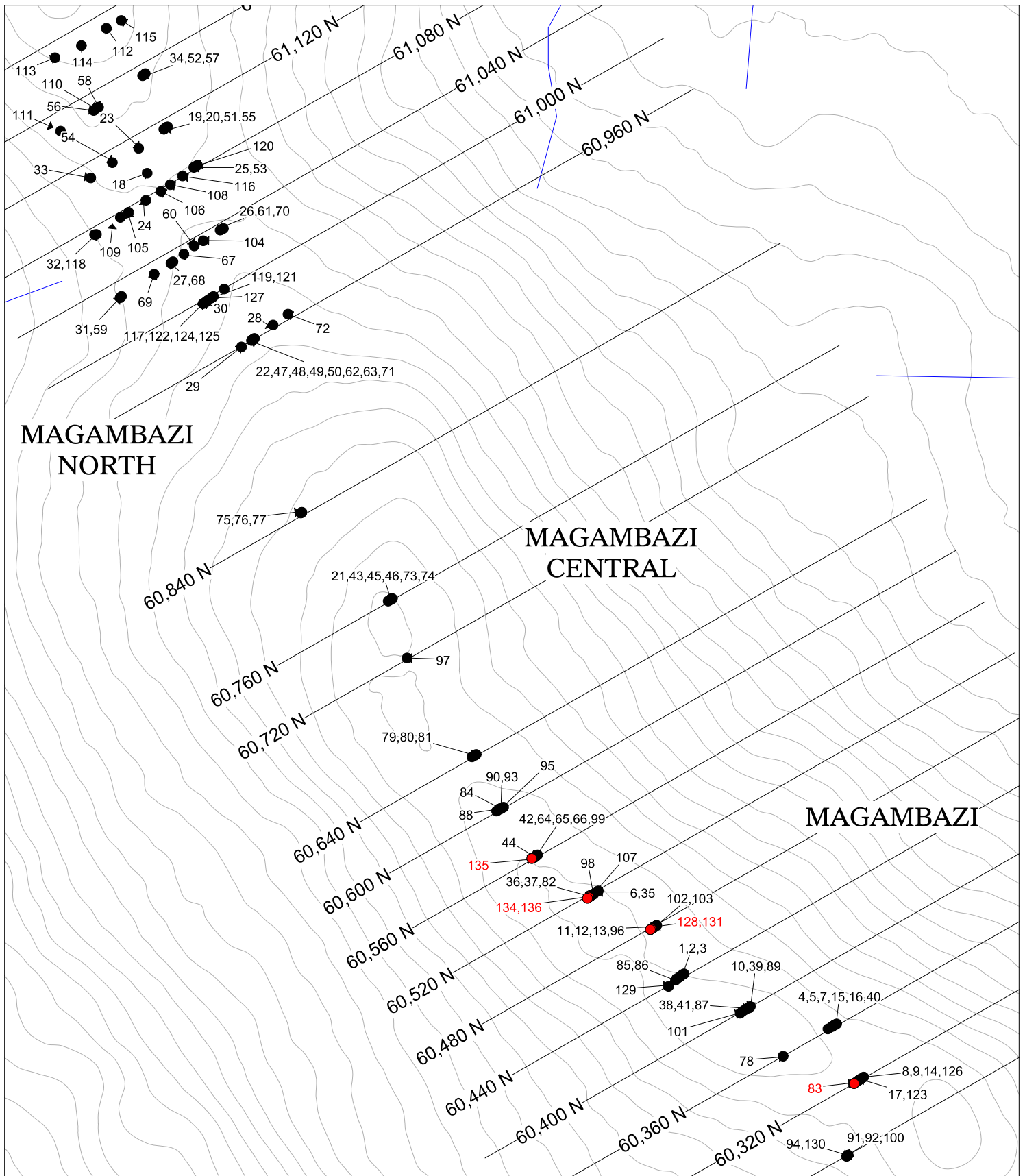
Hole ID		From (m)	To (m)	Interval (m)	Au (g/t)	Local Azimuth	Dip
MGZD001		148.0	207.0	59.0	4.28	90.0	-50.0
	Including	154.0	166.0	12.0	4.18		
	Including	189.0	206.0	17.0	10.39		
MGZD002		239.0	242.0	3.0	1.53	90.0	-75.0
		255.0	272.6	17.6	0.93		
MGZD003		218.2	219.2	1.0	4.80	90.0	-61.0
MGZD004		110.0	137.0	27.0	2.82	90.0	-50.0
	Including	113.0	120.5	7.5	2.85		
	Including	127.0	137.0	10.0	5.15		
MGZD005		128.0	169.0	41.0	3.32	90.0	-65.0
	Including	128.0	144.0	16.0	3.34		
	Including	161.0	169.0	8.0	9.95		
MGZD006		200.7	202.0	1.3	3.02	90.0	-50.0
MGZD007		156.6	196.2	39.6	3.56	90.0	-79.0
	Including	156.6	170.1	13.5	4.01		
	Including	184.0	196.2	12.2	6.99		
MGZD008	No significant results					90.0	-50.0
MGZD009		175.0	177.7	2.7	10.95	90.0	-73.0
MGZD010		81.0	90.0	9.0	1.13	89.0	-50.0
MGZD011		139.0	181.1	42.1	2.42	90.0	-48.0
	Including	139.0	146.0	7.0	1.37		
	Including	157.3	181.1	23.8	3.86		
MGZD012		170.8	227.0	56.2	6.39	90.0	-59.0
	Including	170.8	189.0	18.2	7.98		
	Including	196.0	226.0	30.0	7.02		
MGZD013	No significant results					92.0	-65.0
MGZD014		41.0	46.0	5.0	1.53	87.0	-61.5
		160.0	161.0	1.0	7.55		
MGZD015		149.0	154.0	5.0	2.10	87.0	-73.0
	And	200.0	210.0	10.0	2.76		
MGZD016		135.0	140.0	5.0	5.17	87.0	-81.0
	And	240.7	246.0	5.3	5.86		
	Including	240.7	244.2	3.5	8.30		
MGZD017		94.0	99.0	5.0	3.07	87.0	-81.0
MGZD018		21.0	24.7	3.7	2.25	10.0	-50.0
MGZD019		70.0	88.0	18.0	3.30	267.0	-50.0
	Including	70.0	78.0	8.0	5.68		
		100.0	103.0	3.0	3.04		
MGZD020		63.0	63.7	0.7	4.00	30.0	-90.0
MGZD021		158.0	166.1	8.1	0.53	103.0	-51.0
MGZD022		150.0	158.0	8.0	1.10	92.0	-65.0
MGZD023		22.0	27.4	5.4	1.44	267.0	-55.0
		54.7	85.0	30.3	3.46		
	Including	70.0	76.3	6.3	5.57		
MGZD024		64.4	72.4	8.0	3.25	267.0	-55.0
MGZD025		41.4	52.6	11.2	1.33	267.0	-55.0
		75.0	87.0	12.0	2.65		
MGZD026		87.7	95.7	8.0	1.73	267.0	-55.0
MGZD027		99.0	126.7	27.7	2.18	267.0	-55.0
MGZD028		180.0	191.0	11.0	2.03	275.0	-55.0
		200.0	202.1	2.1	5.58		
MGZD029		169.0	182.6	13.6	1.71	275.0	-55.0
	Including	177.0	182.6	5.6	3.27		
MGZD030	No significant results					270.0	-55.0
MGZD031		82.0	84.4	2.4	10.18	275.0	-55.0
MGZD032		73.0	83.1	10.1	1.23	275.0	-55.0
MGZD033		42.0	44.8	2.8	1.60	275.0	-55.0
MGZD034		43.0	58.4	15.4	1.85	275.0	-55.0
MGZD035		166.0	176.5	10.5	2.40	90.0	-55.6
	Including	168.1	174.4	6.3	3.12		
		201.0	217.0	16.0	5.46		
	Including	206.7	216.1	9.4	8.59		

Hole ID		From (m)	To (m)	Interval (m)	Au (g/t)	Local Azimuth	Dip
MGZD036		202.0	207.4	5.4	5.10	90.0	-63.0
		219.0	267.0	48.0	2.67		
	Including	224.0	231.0	7.0	6.21		
	And	240.4	254.0	13.6	4.54		
MGZD037	No significant results					90.0	-72.0
MGZD038		219.7	235.0	15.3	1.87	90.0	-65.0
	Including	219.7	226.4	6.7	2.64		
	And Including	229.9	232.0	2.1	4.07		
MGZD039		199.0	202.5	3.5	1.69	90.0	-71.0
	And	233.3	249.2	15.9	2.00		
	Including	233.3	238.0	4.7	3.47		
	And Including	245.0	249.2	4.2	3.11		
MGZD040		102.0	136.6	34.6	1.36	90.0	-90.0
		106.0	109.5	3.5	7.71		
	Including	103.0	115.0	12.0	2.83		
	And	211.0	214.8	3.8	19.83		
MGZD041		228.4	233.7	5.3	1.74	98.0	-79.0
	And	278.0	280.1	2.1	2.85		
MGZD042		178.7	186.7	8.0	3.80	90.0	-58.0
	And	198.0	205.7	7.7	5.42		
	And	226.0	242.4	16.4	2.03		
	Including	226.0	230.2	4.2	5.87		
MGZD043		149.7	159.9	10.2	2.87	101.0	-75.0
	And	224.0	227.8	3.8	3.36		
	And	247.0	268.2	21.2	4.80		
	Including	247.0	258.0	11.0	7.90		
MGZD044		153.0	157.0	4.0	2.85	90.0	-68.0
		261.4	281.0	19.6	2.32		
	Including	261.4	272.9	11.5	3.16		
MGZD045		246.0	267.7	21.7	6.79	90.0	-81.5
	Including	246.0	255.5	9.5	12.75		
MGZD046		138.7	144.7	6.0	0.68	90.0	-64.5
MGZD047	No significant results					95.0	-62.4
MGZD048		109.0	169.0	60.0	1.67	93.0	-74.0
	Including	109.0	132.5	23.5	2.86		
MGZD049		146.1	147.7	1.6	1.72	94.0	-85.0
MGZD050	No significant results					270.0	-75.0
MGZD051		14.0	24.4	10.4	1.18	273.0	-73.0
MGZD052		39.7	50.0	10.3	1.99	267.0	-69.5
	Including	39.7	41.1	1.4	12.12		
MGZD053		52.0	85.0	33.0	3.39	265.0	-74.5
	Including	70.8	80.7	9.9	6.25		
MGZD054		33.7	40.0	6.3	0.92	272.0	-57.0
	And	55.0	70.0	15.0	1.29		
MGZD055		21.7	34.1	12.4	1.19	271.0	-62.0
	And	47.0	69.0	22.0	1.22		
MGZD056		8.0	13.0	5.0	0.89	269.0	-55.0
		42.0	66.4	24.4	1.38		
	Including	42.0	53.1	11.1	2.29		
MGZD057	No significant results					275.0	-85.0
MGZD058		33.0	50.0	17.0	0.76	360.0	-89.0
	Including	45.4	50.0	4.6	1.56		
MGZD059		129.0	132.0	3.0	9.44	268.0	-41.0
MGZD060		82.0	89.4	7.4	2.32	270.0	-55.0
MGZD061		54.0	59.0	5.0	1.40	93.0	-74.6
MGZD062		100.0	122.4	22.4	0.99	88.0	-67.5
MGZD063		119.0	149.2	30.2	1.64	89.0	-79.5
MGZD064		269.0	271.0	2.4	1.36	91.0	-72.8
		257.0	259.1	2.1	1.60		
MGZD065	No significant results					90.0	-48.5

Hole ID		From (m)	To (m)	Interval (m)	Au (g/t)	Local Azimuth	Dip
MGZD066		230.0	267.0	37.0	12.45	90.0	-64.5
		244.0	267.0	23.0	19.14		
		276.0	278.0	2.0	7.89		
MGZD067		54.7	123.0	68.3	1.90	90.0	-74.2
	Including	99.7	113.0	13.3	4.35		
MGZD068		55.7	89.0	33.3	2.46	91.0	-80.5
	Including	56.7	61.7	5.0	8.04		
	And	78.0	84.7	6.7	5.41		
MGZD069		85.0	91.0	6.0	1.36	94.5	-80.0
MGZD070		66.0	75.1	9.1	1.55	88.0	-49.5
	Including	73.0	75.1	2.1	6.04		
MGZD071		122.4	134.3	11.9	2.44	262.0	-85.5
	Including	128.7	133.6	4.9	3.33		
MGZD072		131.0	144.0	13.0	0.47	91.0	-44.5
	Including	142.0	144.0	2.0	1.42		
MGZD073		138.4	148.9	10.5	1.22	93.0	-71.0
	Including	140.5	148.2	7.7	1.55		
		182.0	214.0	32.0	9.27		
	Including	196.0	212.4	16.4	17.56		
MGZD074		267.0	268.0	1.0	1.00	90.0	-89.0
MGZD075		188.0	207.0	19.0	1.03	90.0	-63.0
	Including	204.0	207.0	3.0	3.12		
MGZD076		213.0	237.0	18.0	3.40	90.0	-73.0
	Including	223.7	231.0	7.3	5.70		
MGZD077		208.0	244.0	36.0	1.65	89.0	-78.0
	Including	214.6	233.0	18.4	3.01		
	Including	218.8	223.7	4.9	6.45		
MGZD078		143.0	145.0	2.0	7.45	117.0	-89.0
		274.4	276.0	1.6	1.08		
MGZD079		226.0	253.0	27.0	4.29	92.0	-73.0
	Including	239.0	253.0	14.0	6.21		
MGZD080		202.0	212.0	10.0	1.66	92.0	-66.0
MGZD081		146.7	152.7	6.0	0.93	90.0	-57.5
MGZD082		256.7	272.3	15.6	6.60	91.0	-67.0
	Including	261.0	271.6	10.6	8.39		
MGZD083		91.0	108.0	17.0	23.96	300.0	-89.0
	Including	102.0	108.0	6.0	27.30		
MGZD084		269.0	282.4	13.4	13.54	90.0	-65.0
	Including	269.0	275.0	6.0	29.40		
MGZD085		128.0	129.0	1.0	2.09	90.0	-68.0
MGZD086		150.0	155.0	5.0	5.38	89.0	-53.5
MGZD087		197.0	226.0	29.0	1.18	96.5	-58.5
	Including	197.0	212.0	15.0	2.06		
MGZD088		222.0	237.0	15.0	4.19	92.0	-70.5
		264.0	275.2	11.2	4.03		
MGZD089		208.0	211.5	3.5	4.84	92.0	-54.5
MGZD090		264.3	269.9	5.6	5.22	90.0	-72.0
MGZD091	No significant results					90.0	-45.0
MGZD092	No significant results					90.0	-67.0
MGZD093		205.9	236.0	30.1	1.63	89.0	-60.5
MGZD094	No significant results					92.0	-78.0
MGZD095		159.0	167.4	8.4	1.73	92.0	-56.5
MGZD096		141.0	189.6	48.6	14.81	87.0	-54.0
	Including	141.0	153.0	12.0	1.55		
	Including	172.8	189.6	16.8	41.51		
	And	180.5	188.9	8.4	80.90		
MGZD097		244.0	261.1	17.1	1.44	88.5	-78.0
MGZD098		203.2	256.4	53.2	9.51	90.5	-61.5
	Including	231.2	255.0	23.8	15.08		
MGZD099		180.0	184.5	4.5	2.46	88.0	-61.0
		224.0	241.4	17.4	6.10		
	including	230.7	237.0	6.3	14.35		

Hole ID		From (m)	To (m)	Interval (m)	Au (g/t)	Local Azimuth	Dip
MGZD100		No significant results				268.5	-61.0
MGZD101		151.0	155.0	4.0	4.46	51.0	-87.0
		239.7	245.3	5.6	1.86		
		294.0	301.0	7.0	5.81		
MGZD102		No significant results				269.5	-47.5
MGZD103		177.6	192.0	14.4	1.42	89.5	-61.5
		208.0	214.3	6.3	1.28		
MGZD104		63.4	67.6	4.2	2.89	88.0	-75.0
MGZD105		14.0	23.1	9.1	1.28	90.0	-72.0
MGZD106		35.1	38.6	3.5	1.03	90.0	-65.0
MGZD107		204.0	252.3	48.3	7.24	89.0	-61.0
MGZD108		32.4	42.9	10.5	0.79	268.5	-55.0
MGZD109		No significant results				269.0	-57.0
MGZD110		9.5	16.5	7.0	1.37	271.5	-69.0
		31.1	42.3	11.2	3.35		
MGZD111		8.0	22.1	14.1	1.15	270.0	-52.0
		32.6	38.1	5.5	1.20		
MGZD112		No significant results				269.0	-54.5
MGZD113		15.1	28.4	13.3	1.30	269.5	-53.5
	Including	20.7	28.4	7.7	1.61		
MGZD114		14.4	17.9	3.5	1.28	270.0	-55.5
		22.1	34.0	11.9	0.98		
		48.7	51.5	2.8	1.74		
MGZD115		No significant results				271.0	-55.0
MGZD116		59.0	69.0	10.0	1.47	89.5	-64.5
MGZD117		112.3	121.0	8.7	38.76	83.5	-86.0
MGZD118		42.0	76.5	34.5	2.04	270.0	-46.0
	Including	42.0	59.7	17.7	2.72		
	Including	66.0	76.5	10.5	1.97		
MGZD119		88.3	91.8	3.5	2.06	271.0	-55.0
MGZD120		No significant results				88.0	-62.5
MGZD121		No significant results				90.0	-53.0
MGZD122		91.7	93.8	2.1	2.82	250.5	-82.0
		110.7	118.0	7.3	2.31		
MGZD123		23.0	25.7	2.7	2.38	92.0	-84.0
		53.0	61.0	8.0	2.60		
		76.0	80.0	4.0	4.45		
		98.0	107.4	9.4	3.98		
MGZD124		83.0	87.0	4.0	6.63	260.5	-71.5
		129.5	143.0	13.5	2.02		
	Including	129.5	133.0	3.5	3.71		
MGZD125		90.1	119.5	29.4	1.71	89.0	-78.0
	Including	111.8	116.7	4.9	5.44		
MGZD126		154.0	158.2	4.2	8.94	91.5	-66.5
MGZD127		101.6	114.0	12.4	1.16	89.0	-44.5
	Including	111.0	114.0	3.0	2.43		
MGZD128		238.0	261.9	23.9	1.25	88.0	-69.0
	including	238.0	243.2	5.2	2.74		
MGZD129		283.0	300.5	17.5	7.29	47.5	-89.5
	Including	296.0	300.5	4.5	17.42		
MGZD130		70.0	71.0	1.0	3.05	269.0	-73.0
MGZD131*		209.0	211.0	2.0	1.95	90.0	-81.0
MGZD134*		195.7	230.0	34.3	2.01	90.0	-82.0
	Including	221.6	229.3	7.7	6.19		
		271.0	276.0	5.0	1.47		
MGZD135*		140.0	152.0	12.0	2.86	90.5	-80.5
		140.7	146.3	5.6	5.78		
		262.7	266.2	3.5	2.73		
MGZD136*		244.0	247.0	3.0	1.61	250.0	-89.0
		259.7	261.8	2.1	2.34		
		289.7	294.0	4.3	3.21		

* Only partial assay results received for this hole



MAGAMBAZI
NORTH

MAGAMBAZI
CENTRAL

MAGAMBAZI



MAGAMBAZI PROJECT, TANZANIA DRILL COLLAR LOCATIONS

- Current Release
- Previous Drillholes

100 metres

May 24, 2011

