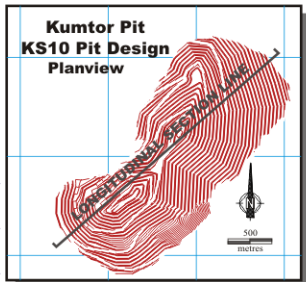




# Kumtor – Longitudinal Section



SW



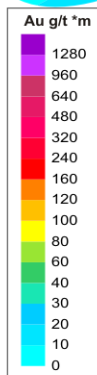
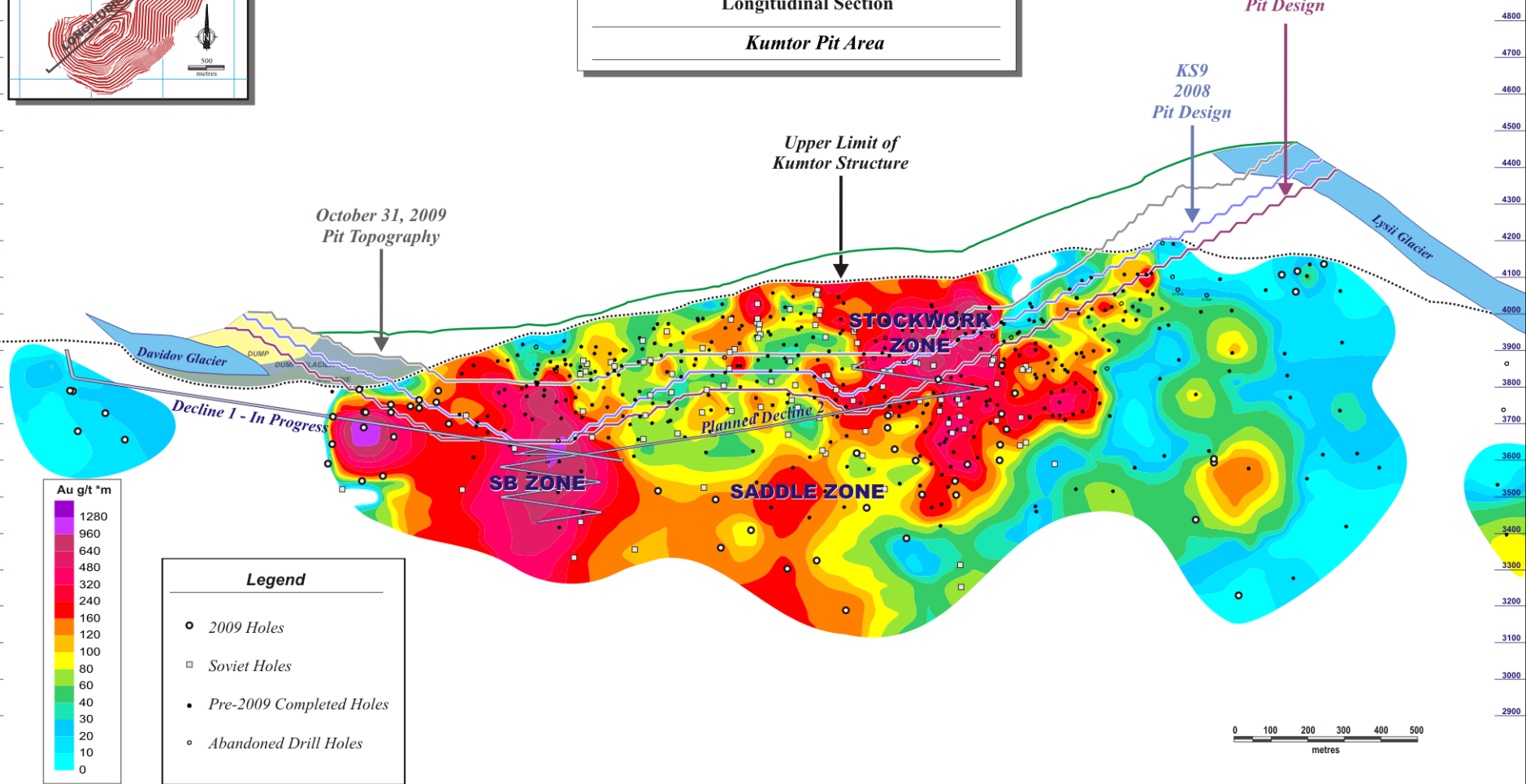
**KUMTOR EXPLORATION**

October 31, 2009

**GOLD GRADE \* THICKNESS**  
Longitudinal Section

*Kumtor Pit Area*

NE



- Legend**
- 2009 Holes
  - Soviet Holes
  - Pre-2009 Completed Holes
  - ◊ Abandoned Drill Holes

