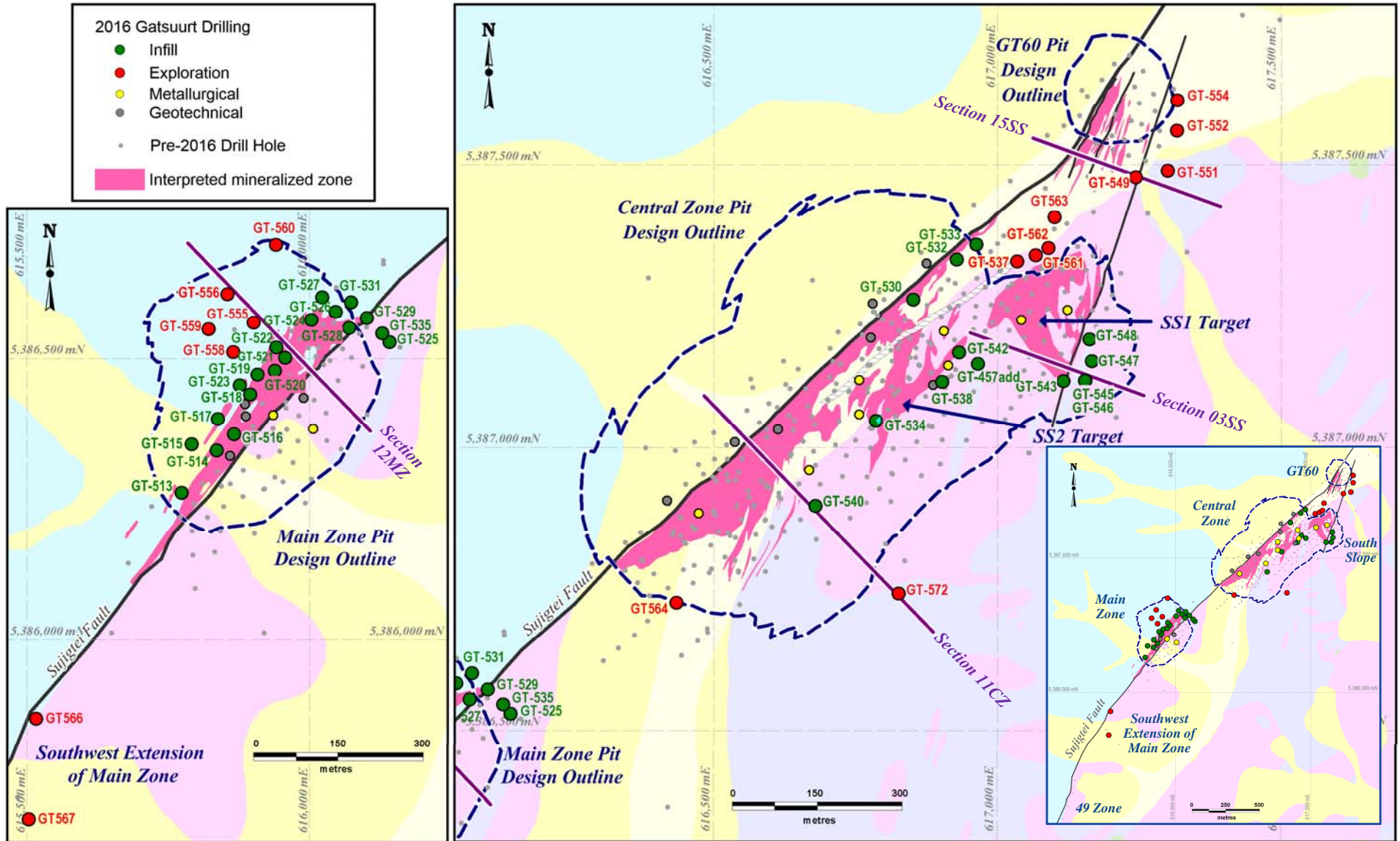
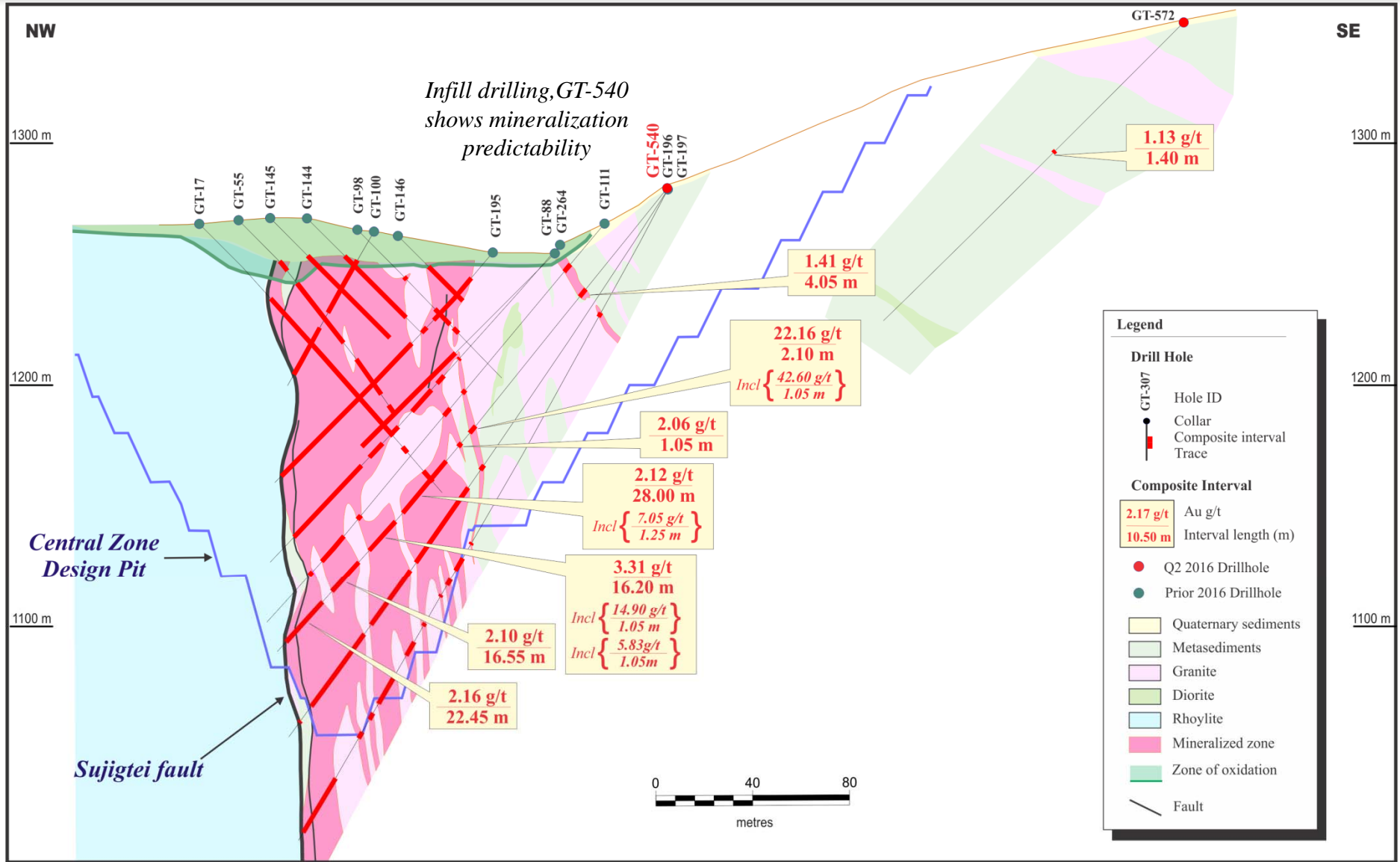


Gatsuurt Deposit – Drill Hole Plan Map and Section Line Locations



This information should be read together with our news release of July 26th, 2016.
 Boris Kotlyar, a Certified Professional Geologist, is Centerra's qualified person for the purpose of National Instrument 43-101.

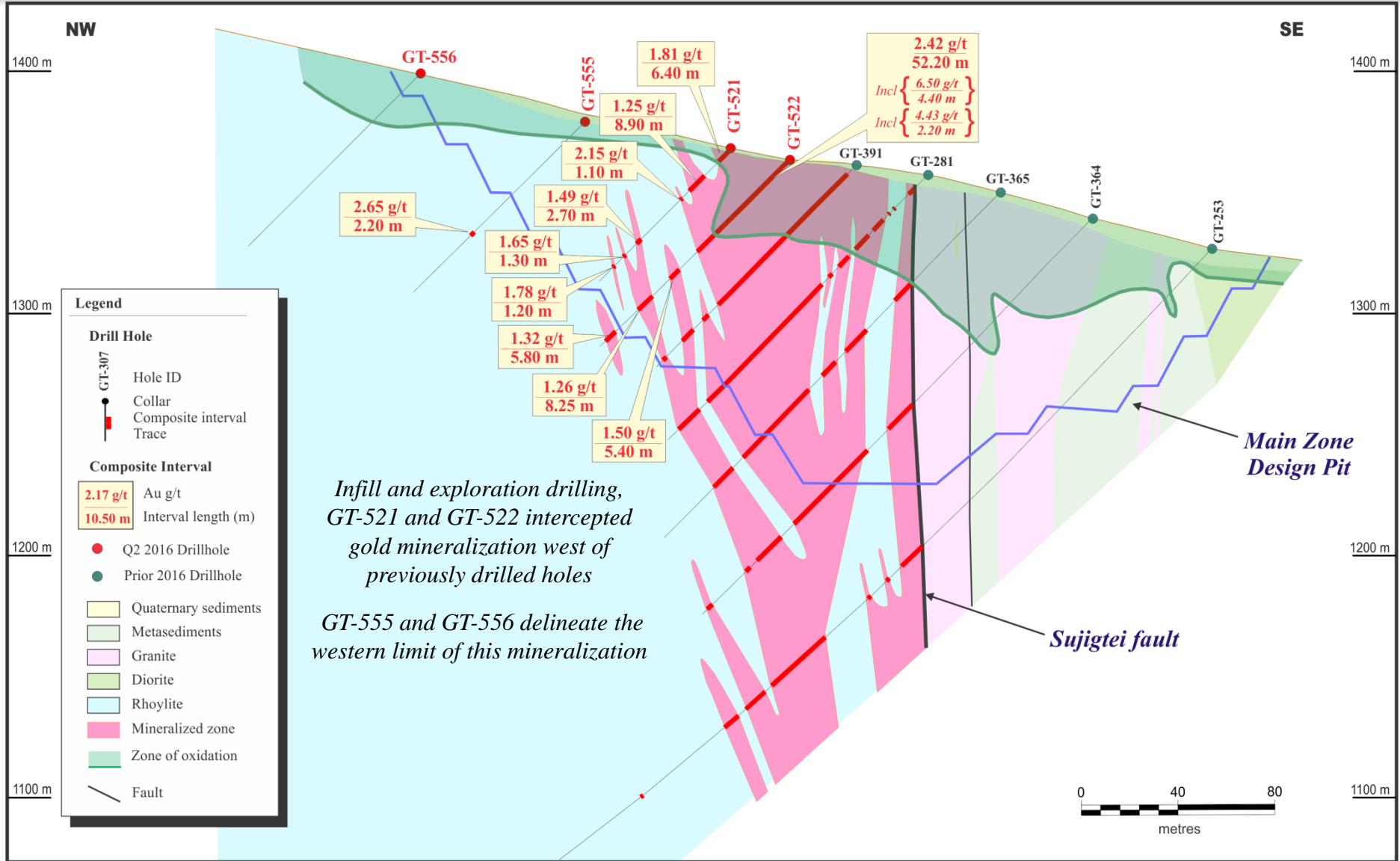
Gatsuurt Deposit – Central Zone Section 11CZ



This information should be read together with our news release of July 26th, 2016.

Boris Kotlyar, a Certified Professional Geologist, is Centerra's qualified person for the purpose of National Instrument 43-101.

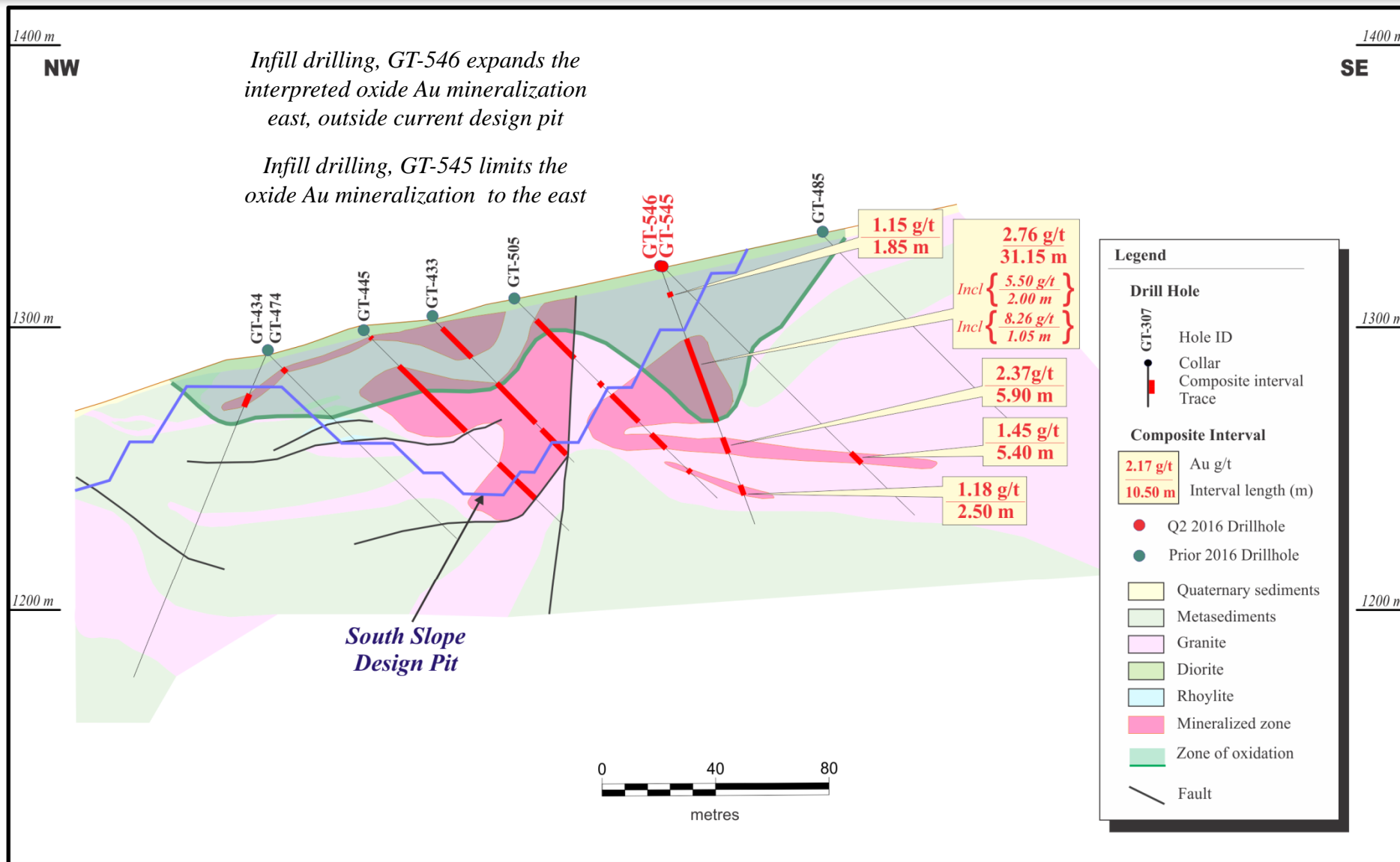
Gatsuurt Deposit – Main Zone Section 12MZ



This information should be read together with our news release of July 26th, 2016.

Boris Kotlyar, a Certified Professional Geologist, is Centerra's qualified person for the purpose of National Instrument 43-101.

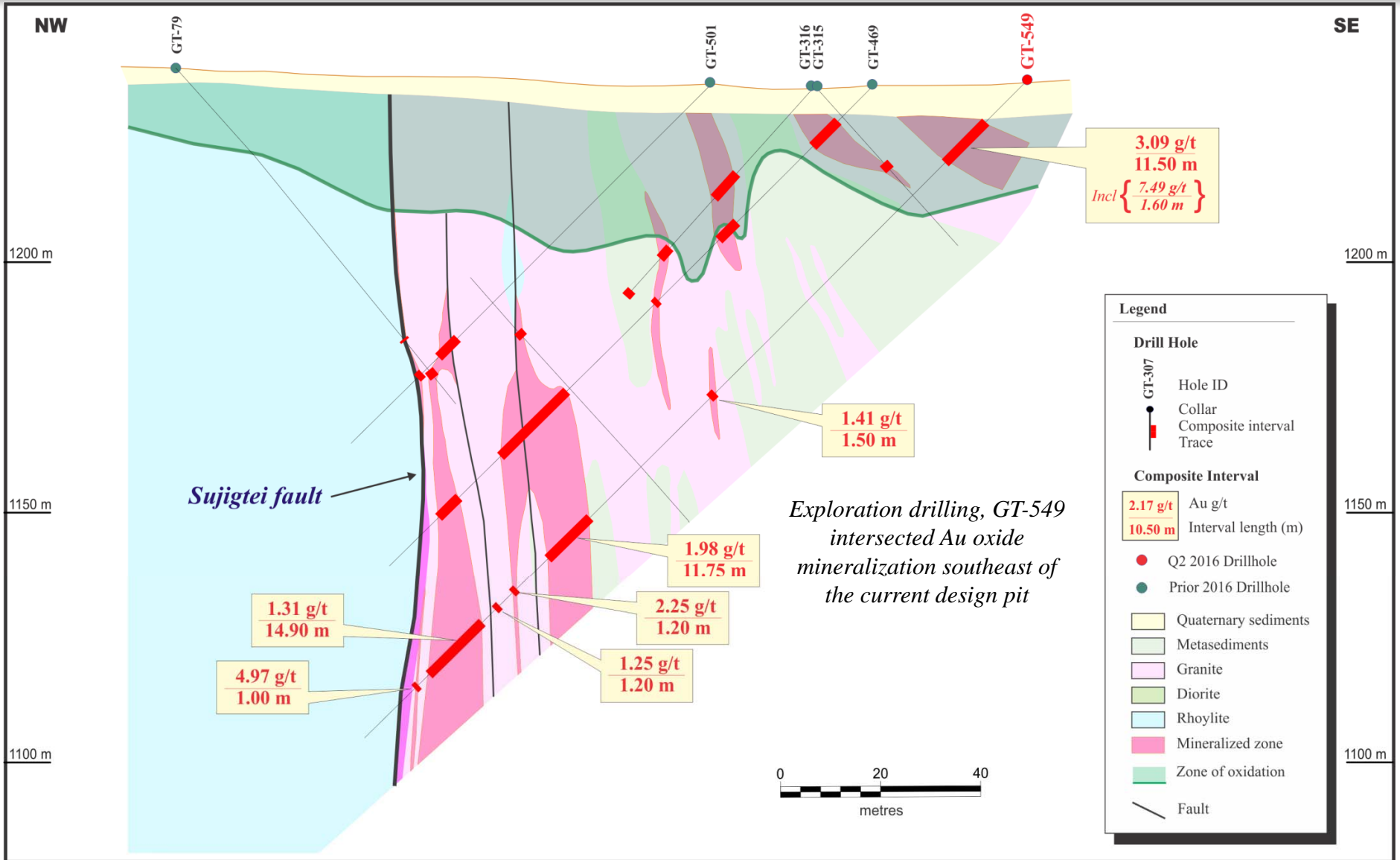
Gatsuurt Deposit – South Slope Section 03SS



This information should be read together with our news release of July 26th, 2016.

Boris Kotlyar, a Certified Professional Geologist, is Centerra's qualified person for the purpose of National Instrument 43-101.

Gatsuurt Deposit – South Slope Section 15SS



This information should be read together with our news release of July 26th, 2016.

Boris Kotlyar, a Certified Professional Geologist, is Centerra's qualified person for the purpose of National Instrument 43-101.



Centerra Gold Inc. - Gatsuurt Drilling Summary

Drill Hole Locations April 1st to June 30th, 2016

Page 1 of 2

Hole ID	Location Easting	Location Northing	Elevation (m)	Length (m)	Collar Azimuth	Collar Dip	Purpose
GT-457add	616,965.45	5,387,149.67	1,286.90	199.80	314	-60	Infill ¹
GT-513	615,773.63	5,386,263.77	1,326.40	25.00	312	-45	Infill
GT-514	615,835.35	5,386,338.66	1,330.81	120.00	316	-45	Infill
GT-515	615,791.56	5,386,349.20	1,335.52	175.00	316	-45	Infill
GT-516	615,866.18	5,386,367.09	1,333.65	145.00	316	-45	Infill
GT-517	615,837.74	5,386,394.20	1,341.12	109.90	316	-45	Infill
GT-518	615,895.02	5,386,437.63	1,356.71	128.00	316	-45	Infill
GT-519	615,907.41	5,386,473.58	1,354.46	100.60	316	-45	Infill
GT-520	615,938.46	5,386,479.89	1,356.64	76.00	316	-45	Infill
GT-521	615,957.07	5,386,503.18	1,363.33	76.70	316	-45	Infill
GT-522	615,940.84	5,386,521.53	1,367.49	109.80	316	-45	Infill
GT-523	615,876.69	5,386,454.26	1,366.82	100.00	316	-45	Infill
GT-524	616,003.24	5,386,570.41	1,389.27	59.00	316	-45	Infill
GT-525	616,141.69	5,386,531.46	1,326.50	85.80	316	-45	Infill
GT-526	616,045.77	5,386,584.97	1,370.06	149.70	316	-45	Infill
GT-527	616,022.09	5,386,610.83	1,384.71	35.00	316	-45	Infill
GT-528	616,069.65	5,386,556.54	1,354.15	130.30	316	-45	Infill
GT-529	616,101.28	5,386,574.21	1,343.88	100.00	316	-45	Infill
GT-530	616,851.03	5,387,263.83	1,249.01	30.00	316	-45	Infill
GT-531	616,073.50	5,386,602.21	1,356.97	75.00	316	-45	Infill
GT-532	616,927.84	5,387,334.70	1,246.52	25.20	316	-45	Infill
GT-533	616,962.38	5,387,361.00	1,247.53	28.00	316	-45	Infill
GT-534	616,785.17	5,387,048.96	1,257.37	193.30	315	-45	Infill
GT-535	616,128.46	5,386,547.19	1,333.49	133.70	316	-45	Infill
GT-536GT	615,859.30	5,386,328.70	1,327.88	145.00	192	-50	Geotechnical
GT-537	617,034.59	5,387,330.81	1,244.16	144.50	316	-53	Exploration
GT-538	616,902.05	5,387,117.78	1,282.60	284.10	316	-60	Infill
GT-539GT	615,989.14	5,386,432.01	1,348.54	175.00	359	-51	Geotechnical
GT-540	616,678.52	5,386,898.96	1,281.26	250.70	316	-51	Infill
GT-541GT	616,874.77	5,387,327.49	1,246.98	200.00	90	-55	Geotechnical
GT-542	616,932.15	5,387,170.11	1,276.77	269.20	316	-60	Infill
GT-543	617,115.50	5,387,119.66	1,316.49	121.00	110	-45	Infill
GT-544GT	616,613.05	5,387,034.04	1,258.46	225.00	140	-50	Geotechnical
GT-545	617,154.64	5,387,119.81	1,322.22	125.00	110	-45	Infill
GT-546	617,153.75	5,387,120.01	1,322.31	97.00	110	-70	Infill
GT-547	617,165.79	5,387,154.40	1,312.02	104.70	110	-70	Infill
GT-548	617,161.73	5,387,193.45	1,300.85	100.40	110	-70	Infill
GT-549	617,243.33	5,387,479.71	1,237.90	187.80	188	-45	Exploration



Centerra Gold Inc. - Gatsuurt Drilling Summary

Drill Hole Locations April 1st to June 30th, 2016

Page 2 of 2

Hole ID	Location Easting	Location Northing	Elevation (m)	Length (m)	Collar Azimuth	Collar Dip	Purpose
GT-550GT	615,885.78	5,386,421.20	1,348.73	185.00	295	-55	Geotechnical
GT-551	617,299.92	5,387,491.46	1,245.87	247.80	248	-50	Exploration
GT-552	617,316.15	5,387,561.64	1,235.47	232.50	233	-50	Exploration
GT-553GT	615,887.26	5,386,398.99	1,340.56	185.00	127	-50	Geotechnical
GT-554	617,316.73	5,387,615.36	1,236.32	195.20	290	-50	Exploration
GT-555	615,900.63	5,386,566.18	1,379.14	100.00	316	-45	Exploration
GT-556	615,854.85	5,386,616.50	1,399.11	100.80	316	-45	Exploration
GT-557GT	616,776.79	5,387,196.68	1,257.65	280.00	128	-52	Geotechnical
GT-558	615,864.63	5,386,513.40	1,375.49	100.00	316	-45	Exploration
GT-559	615,821.47	5,386,554.65	1,394.43	100.00	316	-45	Exploration
GT-560	615,940.41	5,386,703.44	1,443.43	100.00	316	-45	Exploration
GT-561	617,066.71	5,387,342.04	1,243.29	145.80	316	-50	Exploration
GT-562	617,089.45	5,387,354.86	1,242.16	157.80	316	-53	Exploration
GT563	617,100.47	5,387,409.36	1,250.73	134.00	316	-59	Exploration
GT564	616,442.34	5,386,730.49	1,275.47	208.80	316	-55	Exploration
GT-565GT	616,779.82	5,387,257.13	1,253.03	216.00	308	-61	Geotechnical
GT566	615,516.45	5,385,862.61	1,431.82	100.00	316	-45	Exploration
GT567	615,503.25	5,385,686.65	1,387.26	218.20	316	-45	Exploration
GT-568MET	616,006.21	5,386,376.32	1,337.30	215.20	312	-45	Metallurgical
GT-569MET	615,935.44	5,386,400.87	1,339.27	135.00	316	-45	Metallurgical
GT-570MET	616,473.32	5,386,886.25	1,275.43	45.00	316	-45	Metallurgical
GT-571GT	616,537.21	5,387,011.79	1,269.81	230.00	315	-70	Geotechnical
GT-572	616,825.34	5,386,743.76	1,349.78	175.00	316	-45	Exploration
GT-573MET	616,668.21	5,386,962.13	1,255.14	208.20	316	-60	Metallurgical
GT-574MET	616,756.38	5,387,121.76	1,256.22	117.00	316	-45	Metallurgical
GT-575MET	617,041.80	5,387,228.22	1,280.14	101.20	110	-45	Metallurgical
GT-576MET	617,123.04	5,387,245.80	1,282.34	73.00	110	-45	Metallurgical
GT-577MET	616,905.19	5,387,208.13	1,254.33	164.75	316	-57	Metallurgical
GT-578GT	616,417.72	5,386,908.35	1,286.79	140.00	193	-55	Geotechnical
GT-579MET	616,913.16	5,387,147.25	1,276.89	240.10	316	-53	Metallurgical
GT-580MET	616,755.95	5,387,060.70	1,254.59	152.80	316	-50	Metallurgical
GT-583GT	616,886.68	5,387,112.45	1,279.59	150.00	128	-65	Geotechnical

Notes: 1. Extension to Previously Drilled GT-457

Projection: UTM WGS84 Zone 48N
Azimuth: Relative to True North



Centerra Gold Inc. - Gatsuurt 2016 Drilling Results

Period April 1st, 2016 to June 30th, 2016

Drill Hole	Location	Purpose	Drill Section	From (m)	To (m)	Core Length (m)	Au (g/t)
GT-457add	Central Zone	Infill	22MZ	242.05	243.55	1.50	1.00
				246.65	251.30	4.65	2.26
				266.75	268.00	1.25	1.25
				279.20	280.85	1.65	1.51
				307.40	332.30	24.90	4.32
				<i>includes</i> 311.85	313.20	1.35	5.74
				<i>includes</i> 317.10	318.40	1.30	5.71
<i>includes</i> 329.10	332.30	3.20	18.95				
GT-513	Main Zone	Infill	21MZ	13.20	16.20	3.00	1.41
GT-514	Main Zone	Infill	18MZ	4.00	5.30	1.30	1.46
				20.20	22.45	2.25	3.14
				42.40	48.40	6.00	1.12
				54.40	57.00	2.60	1.20
				67.80	71.80	4.00	1.20
GT-515	Main Zone	Infill	19MZ	13.20	14.90	1.70	1.01
				25.10	26.80	1.70	1.17
				102.00	103.30	1.30	1.65
GT-516	Main Zone	Infill	17MZ	<i>includes</i> 5.00	56.50	51.50	1.57
				<i>includes</i> 9.00	11.00	2.00	6.20
				62.00	66.00	4.00	1.03
				76.50	77.75	1.25	1.45
				94.00	96.20	2.20	1.25
				105.00	106.40	1.40	3.03
				114.30	115.50	1.20	1.45
GT-517	Main Zone	Infill	17MZ	50.60	54.50	3.90	1.77
GT-518	Main Zone	Infill	15MZ	0.00	9.60	9.60	1.83
				20.40	25.20	4.80	1.14
				34.65	39.60	4.95	1.34
				43.55	44.60	1.05	1.79
				56.20	57.70	1.50	1.53
				66.60	70.90	4.30	2.51
				83.70	85.50	1.80	1.13
				92.70	94.50	1.80	1.09
GT-519	Main Zone	Infill	14MZ	<i>includes</i> 0.00	24.55	24.55	2.09
				<i>includes</i> 9.70	10.90	1.20	8.15
				52.80	54.60	1.80	1.01
				65.90	67.80	1.90	1.63
				73.40	74.85	1.45	2.27
GT-520	Main Zone	Infill	13MZ	<i>includes</i> 2.80	27.00	24.20	2.71
				<i>includes</i> 2.80	12.00	9.20	4.20
				31.00	45.30	14.30	1.66
				<i>includes</i> 41.00	42.10	1.10	5.08
				52.20	59.20	7.00	1.79
70.40	73.70	3.30	1.69				

Notes: Metallurgical holes are twins of previously drilled holes. Geotechnical holes are not assayed
 Assays are reported true values without top cutting
 Reported intervals are greater than 1.0 g/t Au and greater than 1 metre length or GxT greater than 4.0 (Au grade multiplied by interval length)
 Maximum internal waste 4 metres
 True widths for mineralized zones are about 60% to 90% of stated down hole interval
 This information should be read together with our news release of July 26th, 2016.
 Boris Kotlyar, a Certified Professional Geologist, is Centerra's qualified person for the purpose of National Instrument 43-101
 Tables are current as of June 30, 2016.



Centerra Gold Inc. - Gatsuurt 2016 Drilling Results

Period April 1st, 2016 to June 30th, 2016

Drill Hole	Location	Purpose	Drill Section	From (m)	To (m)	Core Length (m)	Au (g/t)
GT-521	Main Zone	Infill	12MZ	0.90	7.30	6.40	1.81
				15.10	24.00	8.90	1.25
				28.10	29.20	1.10	2.15
				52.10	54.80	2.70	1.49
				61.20	62.50	1.30	1.65
				67.50	68.70	1.20	1.78
GT-522	Main Zone	Infill	12MZ	1.50	53.70	52.20	2.42
				<i>includes</i> 5.90	<i>10.30</i>	<i>4.40</i>	<i>6.50</i>
				<i>includes</i> 16.90	<i>19.10</i>	<i>2.20</i>	<i>4.43</i>
				64.20	69.60	5.40	1.50
				79.75	88.00	8.25	1.26
				100.95	106.75	5.80	1.32
GT-523	Main Zone	Infill	15MZ	8.50	13.35	4.85	1.71
				20.85	22.35	1.50	1.19
				32.75	34.35	1.60	1.03
				51.20	56.00	4.80	2.17
				59.10	60.40	1.30	1.58
GT-524	Main Zone	Infill	10MZ	5.60	15.35	9.75	1.42
				19.85	28.90	9.05	1.39
				34.50	36.70	2.20	1.51
				47.25	48.70	1.45	1.41
				50.85	53.30	2.45	1.09
GT-525	Main Zone	Infill	9MZ	7.05	8.90	1.85	1.02
				12.60	20.00	7.40	1.17
				24.90	27.50	2.60	1.26
				35.60	40.80	5.20	1.45
				47.25	49.55	2.30	1.54
GT-526	Main Zone	Infill	8MZ	82.25	94.90	12.65	1.93
				117.25	118.60	1.35	1.02
				119.95	121.30	1.35	1.02
				122.65	124.00	1.35	1.07
				126.70	128.05	1.35	1.24
				131.40	135.90	4.50	1.13
GT-527	Main Zone	Infill	9MZ	22.10	23.45	1.35	1.01
				26.15	27.50	1.35	1.30
GT-528	Main Zone	Infill	9MZ	2.70	33.70	31.00	2.52
				54.00	79.20	25.20	1.36
				97.00	101.85	4.85	1.31
				105.45	106.85	1.40	3.55
				111.40	121.15	9.75	1.27

Notes: Metallurgical holes are twins of previously drilled holes. Geotechnical holes are not assayed
 Assays are reported true values without top cutting
 Reported intervals are greater than 1.0 g/t Au and greater than 1 metre length or GxT greater than 4.0 (Au grade multiplied by interval length)
 Maximum internal waste 4 metres
 True widths for mineralized zones are about 60% to 90% of stated down hole interval
 This information should be read together with our news release of July 26th, 2016.
 Boris Kotlyar, a Certified Professional Geologist, is Centerra's qualified person for the purpose of National Instrument 43-101
 Tables are current as of June 30, 2016.



Centerra Gold Inc. - Gatsuurt 2016 Drilling Results

Period April 1st, 2016 to June 30th, 2016

Page 3 of 7

Drill Hole	Location	Purpose	Drill Section	From (m)	To (m)	Core Length (m)	Au (g/t)
GT-529	Main Zone	Infill	8MZ	2.50	20.60	18.10	1.95
				28.60	29.95	1.35	1.18
				35.35	36.70	1.35	1.53
				42.10	46.15	4.05	1.45
				58.60	59.95	1.35	1.10
				70.15	74.90	4.75	3.58
				82.30	83.50	1.20	1.69
90.20	94.95	4.75	3.03				
GT-530	Central Zone	Infill	22CZ	7.50	21.35	13.85	5.85
				<i>includes</i> 11.50	14.00	2.50	24.22
GT-531	Main Zone	Infill	8MZ	15.15	16.65	1.50	1.25
				21.15	27.00	5.85	1.29
				34.45	39.30	4.85	2.75
				53.90	57.65	3.75	1.98
GT-532	Central Zone	Infill	25CZ	12.00	22.50	10.50	1.99
GT-533	Central Zone	Infill	26CZ	14.40	25.45	11.05	2.55
GT-534	Central Zone	Infill	16CZ	33.20	37.00	3.80	1.02
				77.05	82.20	5.15	1.32
				86.55	88.00	1.45	1.20
				117.75	119.30	1.55	1.80
				139.55	144.10	4.55	2.77
173.90	180.35	6.45	1.23				
GT-535	Main Zone	Infill	8MZ	10.30	11.60	1.30	1.22
				22.70	24.20	1.50	1.14
				56.40	66.80	10.40	2.01
				73.00	75.40	2.40	1.05
				77.80	79.00	1.20	1.13
				82.65	83.90	1.25	1.04
98.70	100.15	1.45	1.21				
GT-536GT	Geotechnical						
GT-537	Central Zone	Exploration	27CZ	122.20	125.30	3.10	1.27
				128.40	132.70	4.30	1.00

Notes: Metallurgical holes are twins of previously drilled holes. Geotechnical holes are not assayed
 Assays are reported true values without top cutting
 Reported intervals are greater than 1.0 g/t Au and greater than 1 metre length or GxT greater than 4.0 (Au grade multiplied by interval length)
 Maximum internal waste 4 metres
 True widths for mineralized zones are about 60% to 90% of stated down hole interval
 This information should be read together with our news release of July 26th, 2016.
 Boris Kotlyar, a Certified Professional Geologist, is Centerra's qualified person for the purpose of National Instrument 43-101
 Tables are current as of June 30, 2016.



Centerra Gold Inc. - Gatsuurt 2016 Drilling Results

Period April 1st, 2016 to June 30th, 2016

Drill Hole	Location	Purpose	Drill Section	From (m)	To (m)	Core Length (m)	Au (g/t)
GT-538	Central Zone	Infill	20CZ	24.30	37.80	13.50	4.01
				<i>includes</i> 34.80	37.80	3.00	12.70
				42.30	55.80	13.50	3.54
				<i>includes</i> 42.30	43.80	1.50	11.40
				<i>includes</i> 51.30	52.80	1.50	6.15
				94.10	95.30	1.20	1.11
				109.10	114.65	5.55	1.30
				124.70	133.75	9.05	1.66
				137.75	141.95	4.20	2.42
				145.90	151.50	5.60	1.23
				160.60	163.20	2.60	2.72
				198.70	203.60	4.90	9.98
				<i>includes</i> 198.70	199.70	1.00	11.30
				<i>includes</i> 202.10	203.60	1.50	24.70
				217.90	223.80	5.90	2.07
				<i>includes</i> 222.80	223.80	1.00	5.57
				236.00	237.10	1.10	30.10
				241.50	243.60	2.10	4.83
247.60	279.20	31.60	7.60				
<i>includes</i> 248.60	250.60	2.00	43.05				
<i>includes</i> 259.60	260.60	1.00	78.10				
<i>includes</i> 270.90	274.40	3.50	7.49				
<i>includes</i> 277.30	278.20	0.90	15.40				
GT-539GT	Geotechnical						
GT-540	Central Zone	Infill	11CZ	53.60	57.65	4.05	1.41
				126.25	128.35	2.10	22.16
				<i>includes</i> 126.25	127.30	1.05	42.60
				139.85	141.00	1.15	2.06
				145.15	173.15	28.00	2.12
				<i>includes</i> 158.90	160.15	1.25	7.05
				177.80	194.00	16.20	3.31
				<i>includes</i> 187.85	188.90	1.05	14.90
				<i>includes</i> 191.00	192.05	1.05	5.83
200.45	217.00	16.55	2.10				
222.85	245.30	22.45	2.16				
GT-541GT	Geotechnical						

Notes: Metallurgical holes are twins of previously drilled holes. Geotechnical holes are not assayed
 Assays are reported true values without top cutting
 Reported intervals are greater than 1.0 g/t Au and greater than 1 metre length or GxT greater than 4.0 (Au grade multiplied by interval length)
 Maximum internal waste 4 metres
 True widths for mineralized zones are about 60% to 90% of stated down hole interval
 This information should be read together with our news release of July 26th, 2016.
 Boris Kotlyar, a Certified Professional Geologist, is Centerra's qualified person for the purpose of National Instrument 43-101
 Tables are current as of June 30, 2016.



Centerra Gold Inc. - Gatsuurt 2016 Drilling Results

Period April 1st, 2016 to June 30th, 2016

Page 5 of 7

Drill Hole	Location	Purpose	Drill Section	From (m)	To (m)	Core Length (m)	Au (g/t)
GT-542	Central Zone	Infill	22CZ	2.40	5.00	2.60	1.88
				21.35	29.05	7.70	1.38
				41.85	53.50	11.65	6.39
				<i>includes</i> 48.75	50.75	2.00	25.95
				59.50	82.00	22.50	1.10
				91.45	92.50	1.05	1.18
				111.20	112.90	1.70	2.58
				126.55	128.15	1.60	1.13
				133.20	134.20	1.00	10.80
				136.60	137.60	1.00	18.40
				155.40	156.40	1.00	3.64
				164.20	167.20	3.00	2.40
				198.15	199.35	1.20	8.22
				217.20	219.75	2.55	1.71
				224.25	225.75	1.50	1.24
253.70	263.80	10.10	7.84				
<i>includes</i> 260.80	263.80	3.00	20.36				
GT-543	South Slope 1	Infill	2SS	0.95	14.15	13.20	1.30
				61.75	65.80	4.05	2.82
				115.10	117.20	2.10	1.62
GT-544GT	Geotechnical						
GT-545	South Slope 1	Infill	3SS	93.40	98.80	5.40	1.45
GT-546	South Slope 1	Infill	3SS	9.70	11.55	1.85	1.15
				27.30	58.45	31.15	2.76
				<i>includes</i> 34.70	36.70	2.00	5.50
				<i>includes</i> 44.80	45.85	1.05	8.26
				64.40	70.30	5.90	2.37
83.55	86.05	2.50	1.18				
GT-547	South Slope 1	Infill	4SS	<i>includes</i> 16.10	52.30	36.20	2.97
				<i>includes</i> 19.75	20.95	1.20	7.22
				<i>includes</i> 25.30	26.30	1.00	5.47
				<i>includes</i> 27.30	28.30	1.00	8.19
				<i>includes</i> 30.30	31.30	1.00	5.23
				<i>includes</i> 33.30	34.30	1.00	5.88
				<i>includes</i> 43.30	44.30	1.00	9.80
				<i>includes</i> 51.30	52.30	1.00	9.87
				55.30	56.30	1.00	4.85
				<i>includes</i> 60.20	64.20	4.00	2.58
<i>includes</i> 62.20	63.20	1.00	5.88				
77.70	80.50	2.80	1.88				
GT-548	South Slope 1	Infill	5SS	2.25	3.50	1.25	1.05
				40.10	41.10	1.00	7.21

Notes: Metallurgical holes are twins of previously drilled holes. Geotechnical holes are not assayed

Assays are reported true values without top cutting

Reported intervals are greater than 1.0 g/t Au and greater than 1 metre length or GxT greater than 4.0 (Au grade multiplied by interval length)

Maximum internal waste 4 metres

True widths for mineralized zones are about 60% to 90% of stated down hole interval

This information should be read together with our news release of July 26th, 2016.

Boris Kotlyar, a Certified Professional Geologist, is Centerra's qualified person for the purpose of National Instrument 43-101

Tables are current as of June 30, 2016.



Centerra Gold Inc. - Gatsuurt 2016 Drilling Results

Period April 1st, 2016 to June 30th, 2016

Drill Hole	Location	Purpose	Drill Section	From (m)	To (m)	Core Length (m)	Au (g/t)
GT-549	GT60	Exploration	15	13.00	24.50	11.50	3.09
				<i>includes</i> 13.00	14.60	1.60	7.49
				89.50	91.00	1.50	1.41
				124.80	136.55	11.75	1.98
				145.30	146.50	1.20	2.26
				150.10	151.30	1.20	1.25
				154.90	169.80	14.90	1.31
			172.80	173.80	1.00	4.97	
GT-550GT	Geotechnical						
GT-551	GT60	Exploration	16	108.20	109.30	1.10	1.19
				116.50	123.50	7.00	1.52
				136.50	138.50	2.00	1.14
				146.60	158.80	12.20	1.31
				181.00	182.50	1.50	1.24
GT-552	GT60	Exploration	18	109.00	110.60	1.60	5.50
				148.15	149.60	1.45	26.70
				174.10	177.10	3.00	1.33
				183.60	186.10	2.50	1.25
				200.50	221.35	20.85	2.54
				<i>includes</i> 200.50	202.25	1.75	6.42
				<i>includes</i> 213.65	215.10	1.45	4.36
	226.15	227.35	1.20	1.82			
GT-553GT	Geotechnical						
GT-554	GT60	Exploration	22	133.20	134.80	1.60	1.01
				142.80	144.35	1.55	3.13
				166.15	174.90	8.75	1.60
				187.85	189.05	1.20	1.06
GT-555	Main Zone	Exploration	12MZ	64.60	66.80	2.20	2.65
GT-556	Main Zone	Exploration	12MZ	<i>no significant intercepts</i>			
GT-557GT	Geotechnical						
GT-558	Main Zone	Exploration	14MZ	68.25	71.05	2.80	1.97
GT-559	Main Zone	Exploration	14MZ	<i>no significant intercepts</i>			
GT-560	Main Zone	Exploration	9MZ	<i>no significant intercepts</i>			
GT-561	Central Zone	Exploration	28CZ	129.85	131.20	1.35	1.37
				139.30	140.65	1.35	3.20
GT-562	Central Zone	Exploration	29CZ	50.65	52.30	1.65	1.84
				128.10	129.60	1.50	1.01
				140.10	144.85	4.75	1.22
				153.80	154.80	1.00	2.60

Notes: Metallurgical holes are twins of previously drilled holes. Geotechnical holes are not assayed
 Assays are reported true values without top cutting
 Reported intervals are greater than 1.0 g/t Au and greater than 1 metre length or GxT greater than 4.0 (Au grade multiplied by interval length)
 Maximum internal waste 4 metres
 True widths for mineralized zones are about 60% to 90% of stated down hole interval
 This information should be read together with our news release of July 26th, 2016.
 Boris Kotlyar, a Certified Professional Geologist, is Centerra's qualified person for the purpose of National Instrument 43-101
 Tables are current as of June 30, 2016.



Centerra Gold Inc. - Gatsuurt 2016 Drilling Results

Period April 1st, 2016 to June 30th, 2016

Page 7 of 7

Drill Hole	Location	Purpose	Drill Section	From (m)	To (m)	Core Length (m)	Au (g/t)
GT-563	Central Zone	Exploration	30CZ	71.90	89.10	17.20	2.07
				<i>includes</i> 78.60	80.35	1.75	7.75
				116.80	123.70	6.90	1.48
GT-564	Central Zone	Exploration	3CZ	136.90	138.40	1.50	1.39
				141.40	142.90	1.50	1.26
				180.70	198.10	17.40	2.25
GT-565GT	Geotechnical						
GT-566	South West Extension	Exploration	34MZ	2.10	3.60	1.50	1.35
				12.30	13.60	1.30	1.37
				75.30	77.60	2.30	2.43
GT-567	South West Extension	Exploration	38MZ	110.75	115.00	4.25	15.63
				<i>includes</i> 111.75	113.85	2.10	26.59
				143.75	146.50	2.75	1.52
				163.80	168.80	5.00	1.22
				209.65	210.95	1.30	1.01
GT-568MET	Metallurgical						
GT-569MET	Metallurgical						
GT-570MET	Metallurgical						
GT-571GT	Geotechnical						
GT-572	Central Zone	Exploration	11CZ	74.95	76.35	1.40	1.13
GT-573MET	Metallurgical						
GT-574MET	Metallurgical						
GT-575MET	Metallurgical						
GT-576MET	Metallurgical						
GT-577MET	Metallurgical						
GT-578GT	Geotechnical						
GT-579MET	Metallurgical						
GT-580MET	Metallurgical						
GT-583GT	Geotechnical						

Notes: Metallurgical holes are twins of previously drilled holes. Geotechnical holes are not assayed
 Assays are reported true values without top cutting
 Reported intervals are greater than 1.0 g/t Au and greater than 1 metre length or GxT greater than 4.0 (Au grade multiplied by interval length)
 Maximum internal waste 4 metres
 True widths for mineralized zones are about 60% to 90% of stated down hole interval
 This information should be read together with our news release of July 26th, 2016.
 Boris Kotlyar, a Certified Professional Geologist, is Centerra's qualified person for the purpose of National Instrument 43-101
 Tables are current as of June 30, 2016.