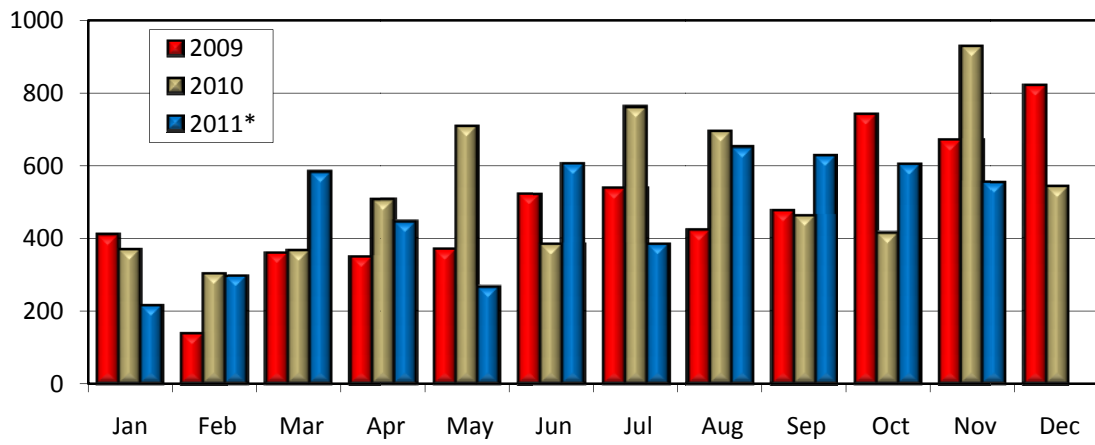


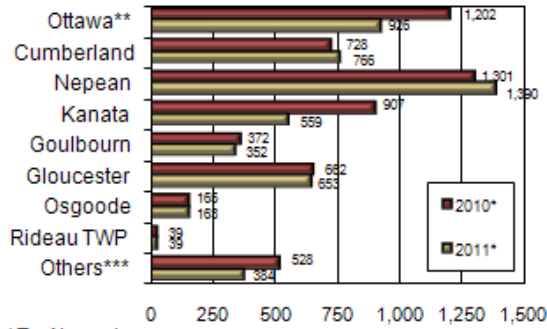
Ottawa Housing Starts 2009 - 2011



* To November

Source: CMHC

**Housing Starts by Area
2010 and 2011 YTD**



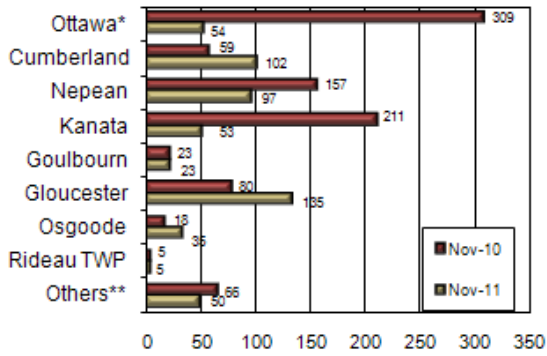
*To November

**Includes: Old City of Ottawa, Rockcliffe Park and

***Includes: West Carleton, Clarence-Rockland and Russell

Source: CMHC

**Housing Starts by Area
November 2010 and November**



*Includes: Old City of Ottawa, Rockcliffe Park and

**Includes: West Carleton, Clarence-Rockland and

Source:

Ottawa Housing Starts						
	Nov-10	Nov-11	% Change	2010 (YTD)	2011 (YTD)	% Change
Single- Detached	268	289	7.8%	2,053	1,891	-7.9%
Multi-Family	660	264	-60.0%	3,851	3,340	-13.3%
Semi- Detached	56	32	-42.9%	328	341	4.0%
Row House	111	133	19.8%	1,800	1,568	-12.9%
Apartment	493	99	-79.9%	1,723	1,431	-16.9%
Total	928	553	-40.4%	5,904	5,231	-11.4%