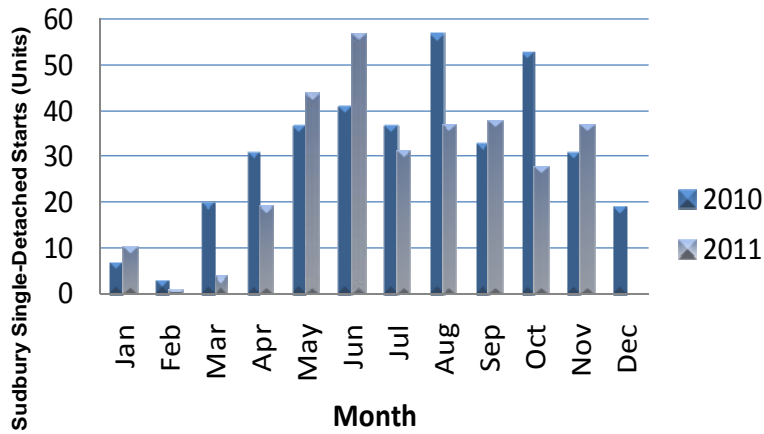


## November Singles Starts Top Ten Year Average



### URBAN HOUSING STARTS NOVEMBER

	Single Family			Semis, Rows, Condos and Apartments			Total		
	2010	2011	% chg	2010	2011	% chg	2010	2011	% chg
Sudbury	31	37	19.4	4	64	1500.0	35	101	188.6

### YEAR-TO-DATE: JANUARY TO NOVEMBER

	Single Family			Semis, Rows, Condos and Apartments			Total		
	2010	2011	% chg	2010	2011	% chg	2010	2011	% chg
Sudbury	350	306	-12.6	200	272	36.0	550	578	5.1