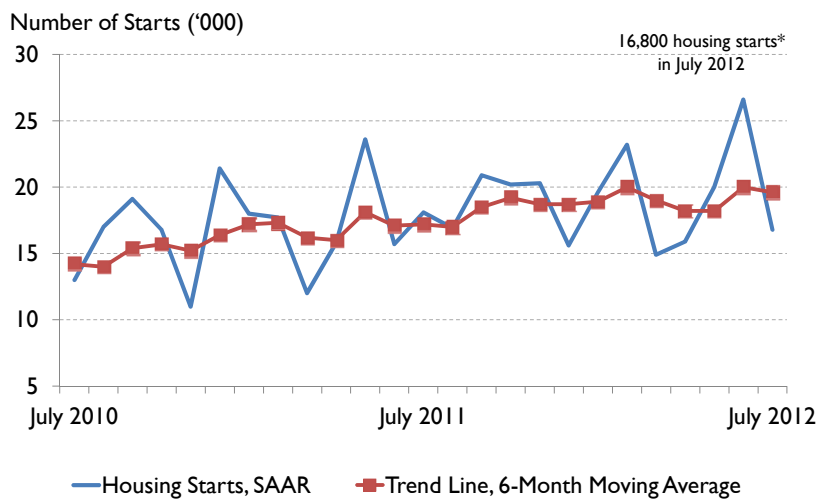


---

## Vancouver CMA Housing Starts, SAAR\*



\* Seasonally adjusted annual rate

## Vancouver CMA Housing Starts

<b>JULY</b>						
	Single Detached <sup>1</sup>		Multiple-family <sup>2</sup>		TOTAL	
	2011	2012	2011	2012	2011	2012
Bowen Island	4	1	0	2	4	3
Burnaby	27	22	250	31	277	53
Coquitlam	11	4	64	6	75	10
Delta	10	5	137	26	147	31
Langley City	0	0	0	0	0	0
Langley District	18	29	101	28	119	57
Maple Ridge	12	22	41	0	53	22
New West	6	4	0	75	6	79
North Van. City	2	0	13	25	15	25
North Van. District	5	8	14	12	19	20
Pitt Meadows	0	2	0	0	0	2
Port Coquitlam	1	0	4	0	5	0
Port Moody	4	0	0	0	4	0
Richmond	30	35	273	34	303	69
Surrey	115	88	137	367	252	455
Vancouver City	115	99	126	497	241	596
West Vancouver	8	8	0	0	8	8
White Rock	2	0	8	4	10	4
Other†	0	0	0	0	0	0
<b>Van CMA TOTAL</b>	<b>370</b>	<b>327</b>	<b>1,168</b>	<b>1,107</b>	<b>1,538</b>	<b>1,434</b>
<b>TOTAL Change</b>		-12%		-5%		-7%
Abbotsford City	25	16	6	6	31	22
Mission	11	5	0	0	11	5
Other‡	0	0	0	0	0	0
<b>Abbotsford-Mission CMA</b>	<b>36</b>	<b>21</b>	<b>6</b>	<b>6</b>	<b>42</b>	<b>27</b>
<b>TOTAL Change</b>		-42%		0%		-36%
Chilliwack CA	17	22	8	78	25	100
<b>TOTAL Change</b>		29%		***		***

Source: CMHC

<sup>1</sup> Single Detached refers to single family homes.

<sup>2</sup> Multiples refers to semi detached, townhouse, and apartment units.

† Includes Anmore, Belcarra, Lion's Bay, University Endowment Lands, Unorgan., and Indian Reserves

‡ Includes Indian Reserves

Effective January 2011, data includes market housing on First Nations reserve lands in urban areas.

\*\*\* Per cent change >100%

## Undefined

<b>YEAR-TO-DATE JULY</b>						
	Single Detached <sup>1</sup>		Multiple-family <sup>2</sup>		TOTAL	
	2011	2012	2011	2012	2011	2012
Bowen Island	10	8	6	4	16	12
Burnaby	156	163	821	805	977	968
Coquitlam	101	104	882	868	983	972
Delta	68	44	166	106	234	150
Langley City	3	3	119	0	122	3
Langley District	129	128	454	561	583	689
Maple Ridge	152	107	119	191	271	298
New West	38	32	156	444	194	476
North Van. City	16	11	206	422	222	433
North Van. District	19	34	306	76	325	110
Pitt Meadows	3	6	71	0	74	6
Port Coquitlam	7	4	22	174	29	178
Port Moody	7	6	5	304	12	310
Richmond	160	184	1,458	633	1,618	817
Surrey	679	522	1,380	1,417	2,059	1,939
Vancouver City	412	513	1,599	2,941	2,011	3,454
West Vancouver	57	79	0	160	57	239
White Rock	10	18	32	170	42	188
Other†	2	4	0	95	2	99
<b>Van CMA TOTAL</b>	<b>2,029</b>	<b>1,970</b>	<b>7,802</b>	<b>9,371</b>	<b>9,831</b>	<b>11,341</b>
<b>TOTAL Change</b>		-3%		20%		15%
Abbotsford City	87	101	147	109	234	210
Mission	61	37	0	2	61	39
Other‡	0	0	0	0	0	0
<b>Abbotsford-Mission CMA</b>	<b>148</b>	<b>138</b>	<b>147</b>	<b>111</b>	<b>295</b>	<b>249</b>
<b>TOTAL Change</b>		-7%		-24%		-16%
Chilliwack CA	101	111	57	183	158	294
<b>TOTAL Change</b>		10%		***		86%

Source: CMHC