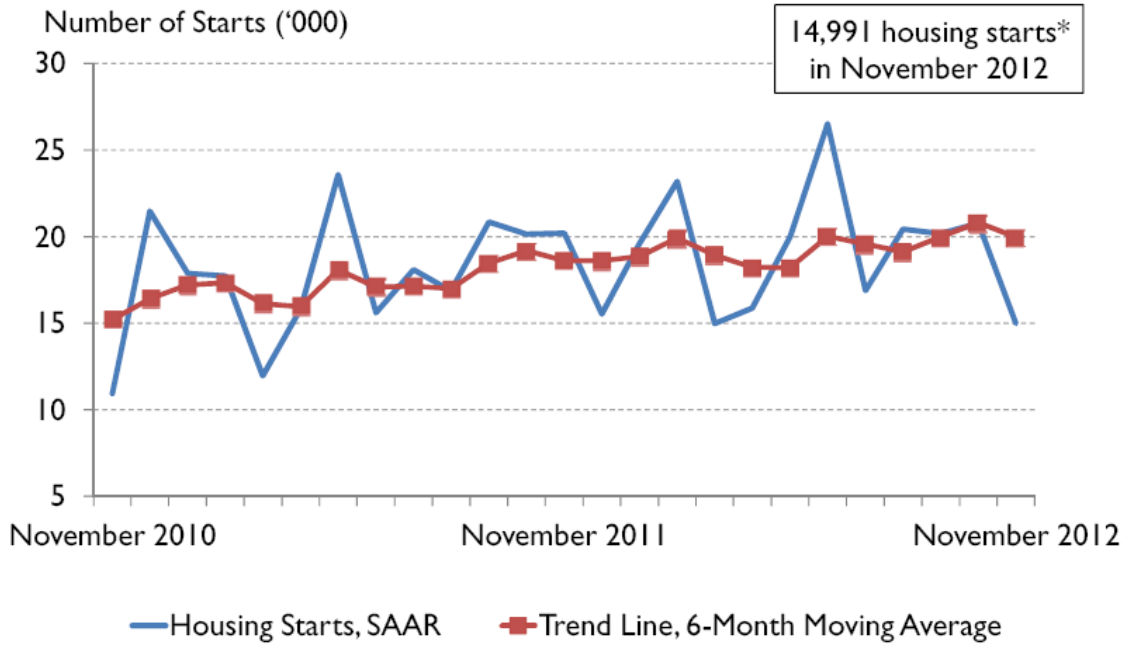


Vancouver CMA Housing Starts, SAAR*



* Seasonally adjusted annual rate

**Preliminary Housing Start Data
November / 2011-2012**

Vancouver CMA¹	November 2011	November 2012
Actual		
November - Single-Detached	281	220
November - Multiples	1,405	1020
November - Total	1,686	1240
January to November - Single-Detached	3,373	3,130
January to November - Multiples	13,295	14,710
January to November - Total	16,668	17,840
	October 2012	November 2012
SAAR ²		
Total	20,788	14,991

Source: CMHC

¹ Census Metropolitan Area

² Seasonally Adjusted at Annual Rates
Detailed data available upon request.

**Vancouver CMA Preliminary Actual Housing Start Data
November / 2011-2012**

Vancouver CMA ¹	Single-Detached		Multiples		Total	
	2011	2012	2011	2012	2011	2012
List of Zones						
Bowen Island	2	0	0	0	2	0
Burnaby	20	22	18	4	38	26
Coquitlam	26	15	38	67	64	82
Delta	5	2	4	26	9	28
Langley City	0	0	0	0	0	0
Langley District	18	6	91	57	109	63
Maple Ridge	11	21	4	75	15	96
New West	3	2	28	0	31	2
North Van. City	0	6	50	14	50	20
North Van. District	5	6	39	12	44	18
Pitt Meadows	0	2	0	0	0	2
Port Coquitlam	0	0	6	24	6	24
Port Moody	1	0	0	0	1	0
Richmond	31	18	33	90	64	108
Surrey	67	51	557	178	624	229
Vancouver City	76	57	424	321	500	378
West Vancouver	9	7	0	150	9	157
White Rock	1	2	7	2	8	4
Other	6	3	106	0	112	3
Total Vancouver CMA Starts	281	220	1,405	1,020	1,686	1,240
Abbotsford-Mission CMA	21	10	32	20	53	30
Chilliwack CA²	16	21	17	6	33	27

¹ Census Metropolitan Area

² Census Agglomeration

**Vancouver CMA Preliminary Actual Housing Start Data
January - November / 2011-2012**

Vancouver CMA ¹	Single-Detached		Multiples		Total	
	2011	2012	2011	2012	2011	2012
List of Zones						
Bowen Island	18	10	6	4	24	14
Burnaby	276	278	1,299	928	1,575	1,206
Coquitlam	226	177	1,134	1,583	1,360	1,760
Delta	99	75	269	236	368	311
Langley City	4	3	169	63	173	66
Langley District	216	173	941	835	1,157	1,008
Maple Ridge	216	175	239	280	455	455
New West	54	49	266	742	320	791
North Van. City	20	24	455	450	475	474
North Van. District	41	55	404	189	445	244
Pitt Meadows	4	13	71	82	75	95
Port Coquitlam	9	7	38	312	47	319
Port Moody	11	6	5	304	16	310
Richmond	309	272	2,046	1,232	2,355	1,504
Surrey	1,015	801	2,528	2,310	3,543	3,111
Vancouver City	716	848	2,897	4,505	3,613	5,353
West Vancouver	107	116	7	322	114	438
White Rock	15	31	51	238	66	269
Other	17	17	470	95	487	112
Total Vancouver CMA Starts	3,373	3,130	13,295	14,710	16,668	17,840
Abbotsford-Mission CMA	227	190	286	171	513	361
Chilliwack CA²	198	196	139	233	337	429

¹ Census Metropolitan Area

² Census Agglomeration