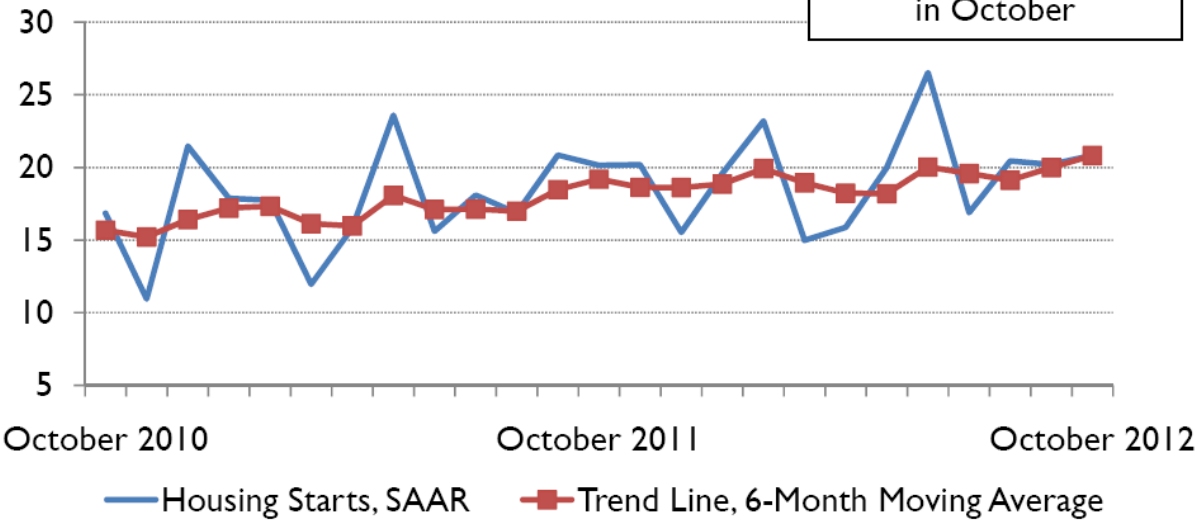


## Vancouver CMA Housing Starts, SAAR\*

Number of Starts ('000)

20,829 housing starts\*  
in October



\* Seasonally Adjusted Annual Rate

**Vancouver CMA Preliminary Actual Housing Start Data  
October / 2011-2012**

Vancouver CMA <sup>1</sup>	Single-Detached		Multiples		Total	
	2011	2012	2011	2012	2011	2012
<b>List of Zones</b>						
Bowen Island	0	0	0	0	0	0
Burnaby	24	21	283	45	307	66
Coquitlam	48	23	132	158	180	181
Delta	11	19	45	88	56	107
Langley City	0	0	0	63	0	63
Langley District	19	8	268	64	287	72
Maple Ridge	25	11	27	0	52	11
New West	4	4	4	185	8	189
North Van. City	0	1	2	8	2	9
North Van. District	6	8	6	87	12	95
Pitt Meadows	0	2	0	0	0	2
Port Coquitlam	0	0	2	66	2	66
Port Moody	1	0	0	0	1	0
Richmond	46	20	104	146	150	166
Surrey	86	73	303	281	389	354
Vancouver City	62	85	189	253	251	338
West Vancouver	12	15	5	0	17	15
White Rock	3	3	4	35	7	38
Other	1	0	0	0	1	0
<b>Total Vancouver CMA Starts</b>	<b>348</b>	<b>293</b>	<b>1,374</b>	<b>1,479</b>	<b>1,722</b>	<b>1,772</b>
<b>Abbotsford-Mission CMA</b>	<b>17</b>	<b>16</b>	<b>81</b>	<b>12</b>	<b>98</b>	<b>28</b>
<b>Chilliwack CA<sup>2</sup></b>	<b>15</b>	<b>17</b>	<b>45</b>	<b>5</b>	<b>60</b>	<b>22</b>

<sup>1</sup> Census Metropolitan Area

<sup>2</sup> Census Agglomeration

**Vancouver CMA Preliminary Actual Housing Start Data**  
**January - October / 2011-2012**

Vancouver CMA <sup>1</sup>	Single-Detached		Multiples		Total	
	2011	2012	2011	2012	2011	2012
<b>List of Zones</b>						
Bowen Island	16	10	6	4	22	14
Burnaby	256	256	1,281	924	1,537	1,180
Coquitlam	200	162	1,096	1,516	1,296	1,678
Delta	94	73	265	210	359	283
Langley City	4	3	169	63	173	66
Langley District	198	167	850	778	1,048	945
Maple Ridge	205	154	235	205	440	359
New West	51	47	238	742	289	789
North Van. City	20	18	405	436	425	454
North Van. District	36	49	365	177	401	226
Pitt Meadows	4	11	71	82	75	93
Port Coquitlam	9	7	32	288	41	295
Port Moody	10	6	5	304	15	310
Richmond	278	254	2,013	1,142	2,291	1,396
Surrey	948	750	1,971	2,132	2,919	2,882
Vancouver City	640	791	2,473	4,184	3,113	4,975
West Vancouver	98	109	7	172	105	281
White Rock	14	29	44	236	58	265
Other	11	14	364	95	375	109
<b>Total Vancouver CMA Starts</b>	<b>3,092</b>	<b>2,910</b>	<b>11,890</b>	<b>13,690</b>	<b>14,982</b>	<b>16,600</b>
<b>Abbotsford-Mission CMA</b>	<b>206</b>	<b>180</b>	<b>254</b>	<b>151</b>	<b>460</b>	<b>331</b>
<b>Chilliwack CA<sup>2</sup></b>	<b>182</b>	<b>175</b>	<b>122</b>	<b>227</b>	<b>304</b>	<b>402</b>

<sup>1</sup> Census Metropolitan Area

<sup>2</sup> Census Agglomeration