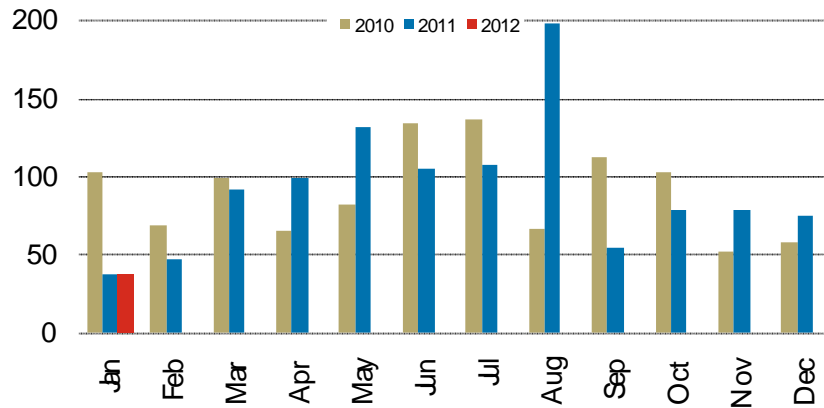


Monthly Housing Starts



Source: CMHC

TABLE 1: JANUARY

| Municipality | Single-Detached | | | Semi-Detached | | | Row | | | Apartment | | | Total | | |
|-----------------------------------|-----------------|-----------|------------|---------------|----------|-----------|----------|-----------|--------------|-----------|----------|----------|-----------|-----------|------------|
| | 2011 | 2012 | % | 2011 | 2012 | % | 2011 | 2012 | % | 2011 | 2012 | % | 2011 | 2012 | % |
| Fort Erie | 8 | 3 | -63% | 0 | 0 | * | 0 | 0 | * | 0 | 0 | * | 8 | 3 | -63% |
| Port Colborne | 0 | 2 | * | 0 | 0 | * | 0 | 0 | * | 0 | 0 | * | 0 | 2 | * |
| Wainfleet | 2 | 0 | -100% | 0 | 0 | * | 0 | 0 | * | 0 | 0 | * | 2 | 0 | -100% |
| Pelham | 2 | 1 | -50% | 2 | 0 | -100% | 0 | 0 | * | 0 | 0 | * | 4 | 1 | -75% |
| Welland | 3 | 1 | -67% | 0 | 0 | * | 3 | 0 | -100% | 0 | 0 | * | 6 | 1 | -83% |
| Thorold | 2 | 1 | -50% | 0 | 0 | * | 0 | 0 | * | 0 | 0 | * | 2 | 1 | -50% |
| Niagara Falls | 2 | 10 | 400% | 0 | 0 | * | 0 | 0 | * | 0 | 0 | * | 2 | 10 | 400% |
| Niagara-on-the-Lake | 1 | 9 | 800% | 0 | 2 | * | 0 | 0 | * | 0 | 0 | * | 1 | 11 | 1000% |
| St. Catharines | 4 | 4 | 0% | 0 | 0 | * | 4 | 0 | -100% | 0 | 0 | * | 8 | 4 | -50% |
| Lincoln | 5 | 5 | 0% | 0 | 0 | * | 0 | 0 | * | 0 | 0 | * | 5 | 5 | 0% |
| St. Catharines-Niagara CMA | 29 | 36 | 24% | 2 | 2 | 0% | 7 | 0 | -100% | 0 | 0 | * | 38 | 38 | 0% |
| Grimsby | 7 | 0 | -100% | 0 | 0 | * | 0 | 29 | * | 0 | 0 | * | 7 | 29 | 314% |
| West Lincoln ¹ | * | * | * | * | * | * | * | * | * | * | * | * | * | * | * |
| Niagara Region² | 36 | 36 | 0% | 2 | 2 | 0% | 7 | 29 | 314% | 0 | 0 | * | 45 | 67 | 49% |

Source: CMHC

*Not applicable

**Year-over-year change greater than 1000 per cent

¹Housing starts data for West Lincoln are collected and reported only on a quarterly basis (i.e. in March, June, September, December)

²Housing starts data for Niagara Region are accurate at each end-of-quarter month and understated in other months due to reporting conventions used for West Lincoln as described in the note (1) above