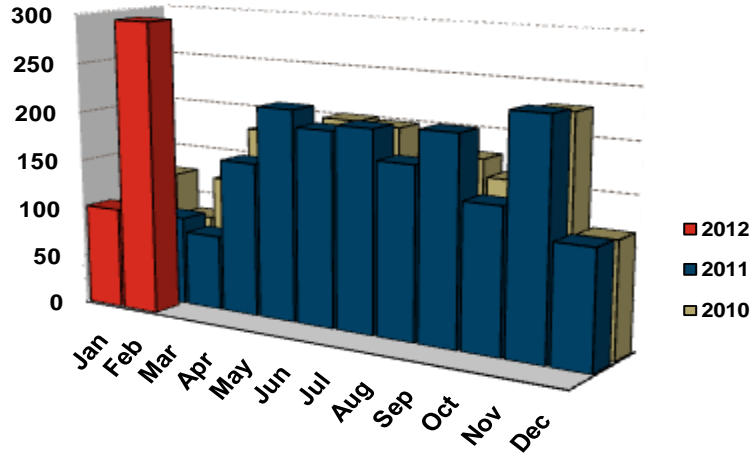


Oshawa CMA Home Starts



Source: CMHC

FEBRUARY HOUSING STARTS											
	SINGLE		SEMI		TH		APT		TOTAL		% CHG
	2011	2012	2011	2012	2011	2012	2011	2012	2011	2012	
Whitby	18	23	0	0	0	0	0	211	18	234	**
Oshawa City	20	6	32	0	0	0	0	0	52	6	-88.5
Clarington	20	16	0	0	0	0	0	40	20	56	180.0
OSHAWA CMA	58	45	32	0	0	0	0	251	90	296	**
Pickering	19	5	0	0	0	0	235	0	254	5	-98.0
Ajax	37	17	0	12	0	21	0	0	37	50	35.1
Uxbridge	4	0	0	0	0	0	0	0	4	0	-100.0
Brock	0	0	0	0	0	0	0	0	0	0	NA
Scugog	2	1	0	0	0	0	0	0	2	1	-50.0
DURHAM REGION	120	68	32	12	0	21	235	251	387	352	-9.0

JANUARY-FEBRUARY HOUSING STARTS											
	SINGLE		SEMI		TH		APT		TOTAL		% CHG
	2011	2012	2011	2012	2011	2012	2011	2012	2011	2012	
Whitby	23	29	0	0	0	18	0	211	23	258	**
Oshawa City	38	22	32	0	0	0	0	0	70	22	-68.6
Clarington	47	72	0	0	0	6	0	40	47	118	151.1
OSHAWA CMA	108	123	32	0	0	24	0	251	140	398	184.3
Pickering	22	10	0	0	0	0	235	0	257	10	-96.1
Ajax	41	46	0	20	0	37	0	0	41	103	151.2
Uxbridge	4	0	0	0	0	0	0	0	4	0	-100.0
Brock	0	0	0	0	0	0	0	0	0	0	NA
Scugog	2	1	0	0	0	0	0	0	2	1	-50.0
DURHAM REGION	177	180	32	20	0	61	235	251	444	512	15.3

Source: CMHC