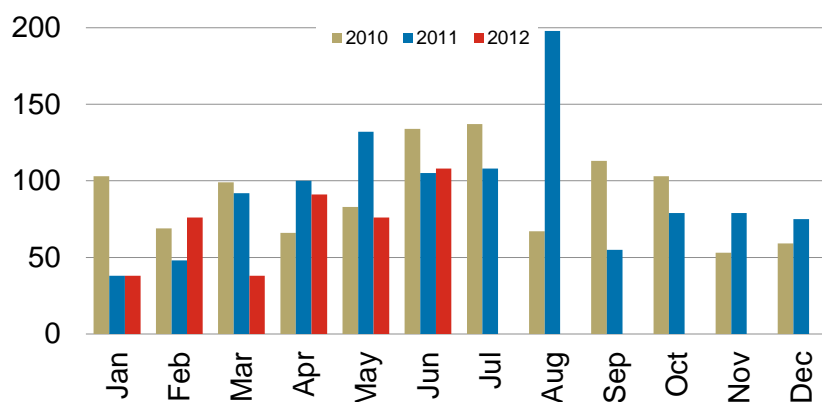


## Monthly Housing Starts



Source: CMHC

TABLE 1: JUNE

Municipality	Single-Detached			Semi-Detached			Row			Apartment			Total		
	2011	2012	%	2011	2012	%	2011	2012	%	2011	2012	%	2011	2012	%
Fort Erie	7	6	-14%	0	0	*	0	8	*	0	0	*	7	14	100%
Port Colborne	0	1	*	0	0	*	0	0	*	0	0	*	0	1	*
Wainfleet	1	2	100%	0	0	*	0	0	*	0	0	*	1	2	100%
Pelham	7	1	-86%	0	0	*	0	0	*	0	0	*	7	1	-86%
Welland	5	5	0%	0	2	*	11	10	-9%	0	0	*	16	17	6%
Thorold	2	1	-50%	0	4	*	0	0	*	0	0	*	2	5	150%
Niagara Falls	27	15	-44%	0	4	*	30	19	-37%	0	0	*	57	38	-33%
Niagara-on-the-Lake	5	10	100%	0	0	*	0	3	*	0	0	*	5	13	160%
St. Catharines	4	5	25%	0	0	*	0	0	*	0	0	*	4	5	25%
Lincoln	6	10	67%	0	2	*	0	0	*	0	0	*	6	12	100%
<b>St. Catharines-Niagara CMA</b>	<b>64</b>	<b>56</b>	<b>-13%</b>	<b>0</b>	<b>12</b>	<b>*</b>	<b>41</b>	<b>40</b>	<b>-2%</b>	<b>0</b>	<b>0</b>	<b>*</b>	<b>105</b>	<b>108</b>	<b>3%</b>
Grimsby	13	8	-38%	0	0	*	0	8	*	0	0	*	13	16	23%
West Lincoln <sup>1</sup>	16	13	-19%	0	0	*	3	3	*	0	0	*	19	16	-16%
<b>Niagara Region<sup>2</sup></b>	<b>93</b>	<b>77</b>	<b>-17%</b>	<b>0</b>	<b>12</b>	<b>*</b>	<b>44</b>	<b>51</b>	<b>16%</b>	<b>0</b>	<b>0</b>	<b>*</b>	<b>137</b>	<b>140</b>	<b>2%</b>

TABLE 2: YEAR-TO-DATE (JANUARY-JUNE)

Municipality	Single-Detached			Semi-Detached			Row			Apartment			Total		
	2011	2012	%	2011	2012	%	2011	2012	%	2011	2012	%	2011	2012	%
Fort Erie	38	31	-18%	0	0	*	3	8	167%	0	0	*	41	39	-5%
Port Colborne	0	5	*	0	0	*	0	0	*	0	0	*	0	5	*
Wainfleet	8	6	-25%	0	0	*	0	0	*	0	0	*	8	6	-25%
Pelham	21	11	-48%	2	0	-100%	0	4	*	0	0	*	23	15	-35%
Welland	36	28	-22%	2	0	-100%	14	16	14%	25	0	-100%	77	44	-43%
Thorold	28	13	-54%	0	2	*	7	11	57%	0	0	*	35	26	-26%
Niagara Falls	91	74	-19%	4	0	-100%	43	48	12%	0	0	*	138	122	-12%
Niagara-on-the-Lake	28	48	71%	2	2	*	20	19	-5%	0	0	*	50	69	38%
St. Catharines	25	25	0%	2	0	-100%	14	20	43%	42	0	-100%	83	45	-46%
Lincoln	32	32	0%	4	0	-100%	24	6	-75%	0	0	*	60	38	-37%
<b>St. Catharines-Niagara CMA</b>	<b>307</b>	<b>273</b>	<b>-11%</b>	<b>16</b>	<b>4</b>	<b>-75%</b>	<b>125</b>	<b>132</b>	<b>6%</b>	<b>67</b>	<b>0</b>	<b>-100%</b>	<b>515</b>	<b>409</b>	<b>-21%</b>
Grimsby	56	22	-61%	0	0	*	0	70	*	0	0	*	56	92	64%
West Lincoln <sup>1</sup>	17	24	*	0	0	*	6	9	*	0	0	*	*	*	*
<b>Niagara Region<sup>2</sup></b>	<b>380</b>	<b>319</b>	<b>-16%</b>	<b>16</b>	<b>4</b>	<b>-75%</b>	<b>131</b>	<b>211</b>	<b>61%</b>	<b>67</b>	<b>0</b>	<b>-100%</b>	<b>571</b>	<b>501</b>	<b>-12%</b>

Source: CMHC

\*Not applicable

\*\*Year-over-year change greater than 1000 per cent

<sup>1</sup>Housing starts data for West Lincoln are collected and reported only on a quarterly basis (i.e. in March, June, September, December)

<sup>2</sup>Housing starts data for Niagara Region are accurate at each end-of-quarter month and understated in other months due to reporting conventions used for West Lincoln as described in the note (1) above