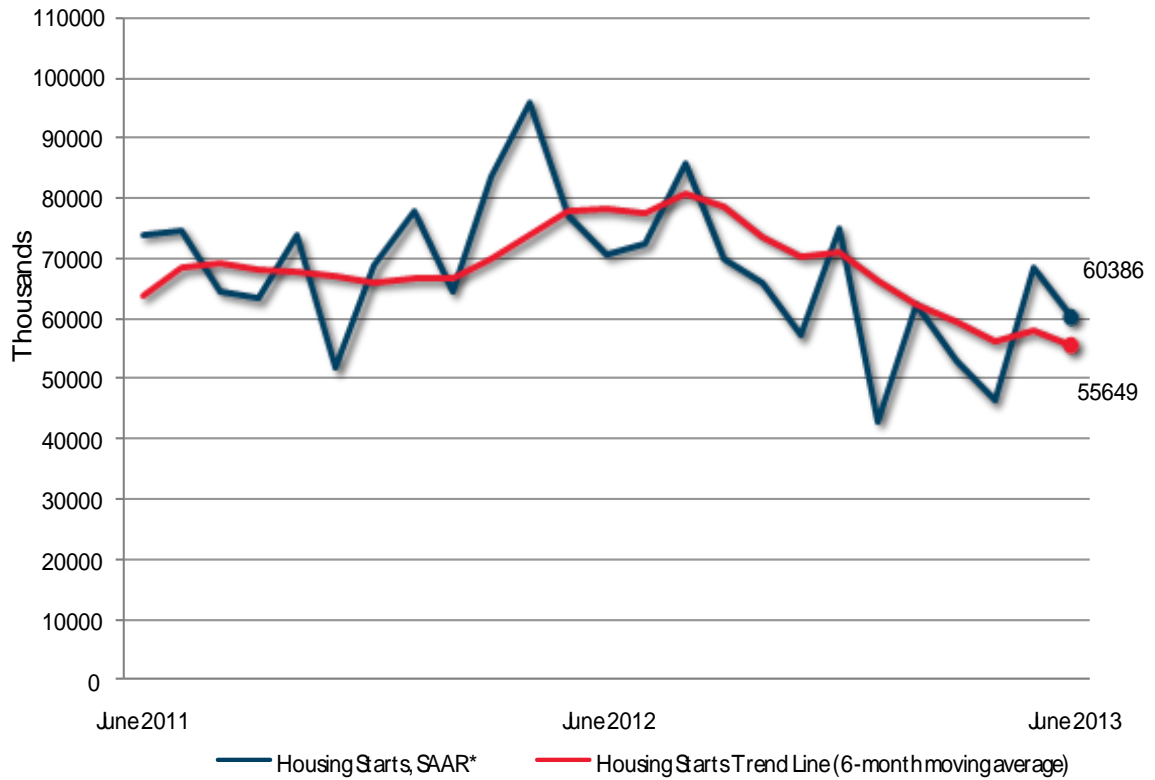


RELEASE

Provincial Housing Starts - Urban Areas



Preliminary Housing Start Data June 2013		
Province	May 2013	June 2013
<i>Trend</i> ¹ , urban centres ²	58,087	55,649
SAAR, urban centres ²	68,430	60,386
	2012	2013
Actual, urban centres ²		
June- Single-Detached	2367	2219
June - Multiples	3890	3159
June- Total	6257	5378
January to June- Single-Detached	10,753	9676
January to June - Multiples	26,169	16,553
January to June - Total	36,922	26,229

Source: CMHC

¹The trend is a six-month moving average of the monthly seasonally adjusted annual rates (SAAR).

²Urban centres with a population of 10,000 and over.

Detailed data available upon request