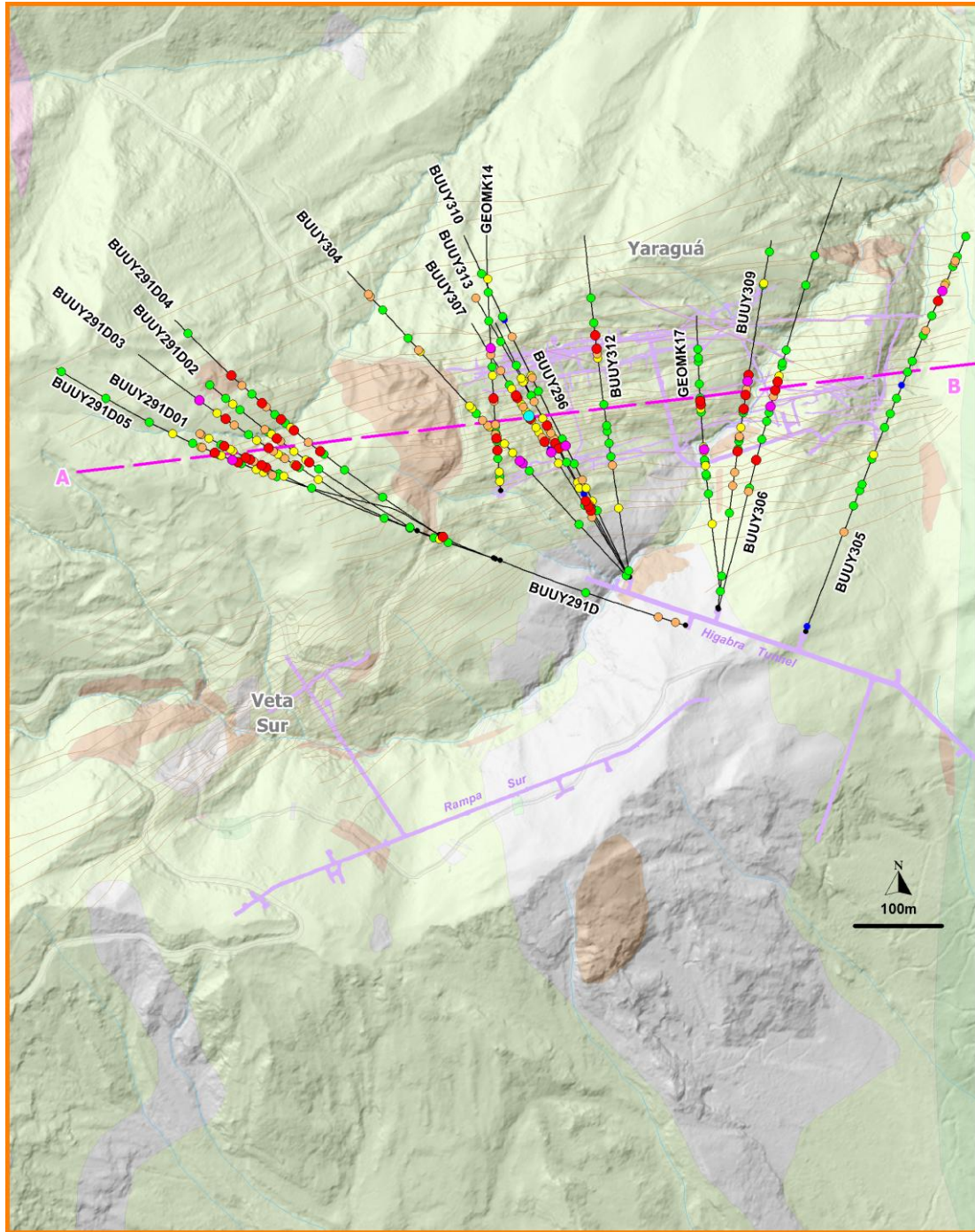


Figure 1 – Plan view of highlights of new drilling in the Yaraguá system, showing the surface projection of veins in the current (2014) Yaraguá mineral resource model on geology-topography and underground developments. Line A-B refers to the long section line for Figure 4, lines C-D and E-F, respectively, to cross sections, Figures 2 and 3.



| Drilling       | Gold (g/t) | Geology     |
|----------------|------------|-------------|
| ● This Release | ● > 100    | ■ Andesite  |
| — Model Vein   | ● 30 - 100 | ■ Breccia 1 |
| — Road         | ● 10 - 30  | ■ Breccia 2 |
| — Drainage     | ● 5 - 10   | ■ Sediments |
| — Development  | ● 3 - 5    | ■ Volcanics |
|                | ● 1 - 3    |             |
|                | ● Silver   |             |