

Figure 1. Sketch map of the faults interpreted to be active during the D1 Deformation Phase.

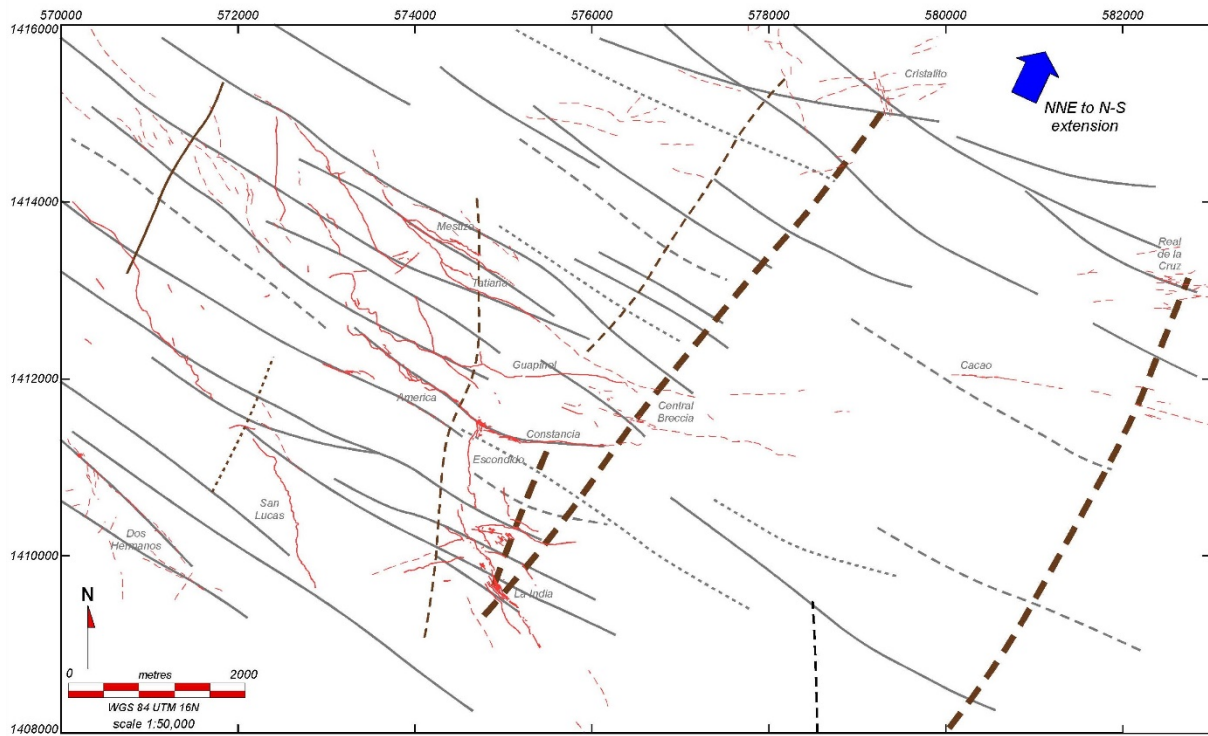


Figure 2. Sketch map of the faults interpreted to be active during the main gold mineralisation D2 Deformation Phase.

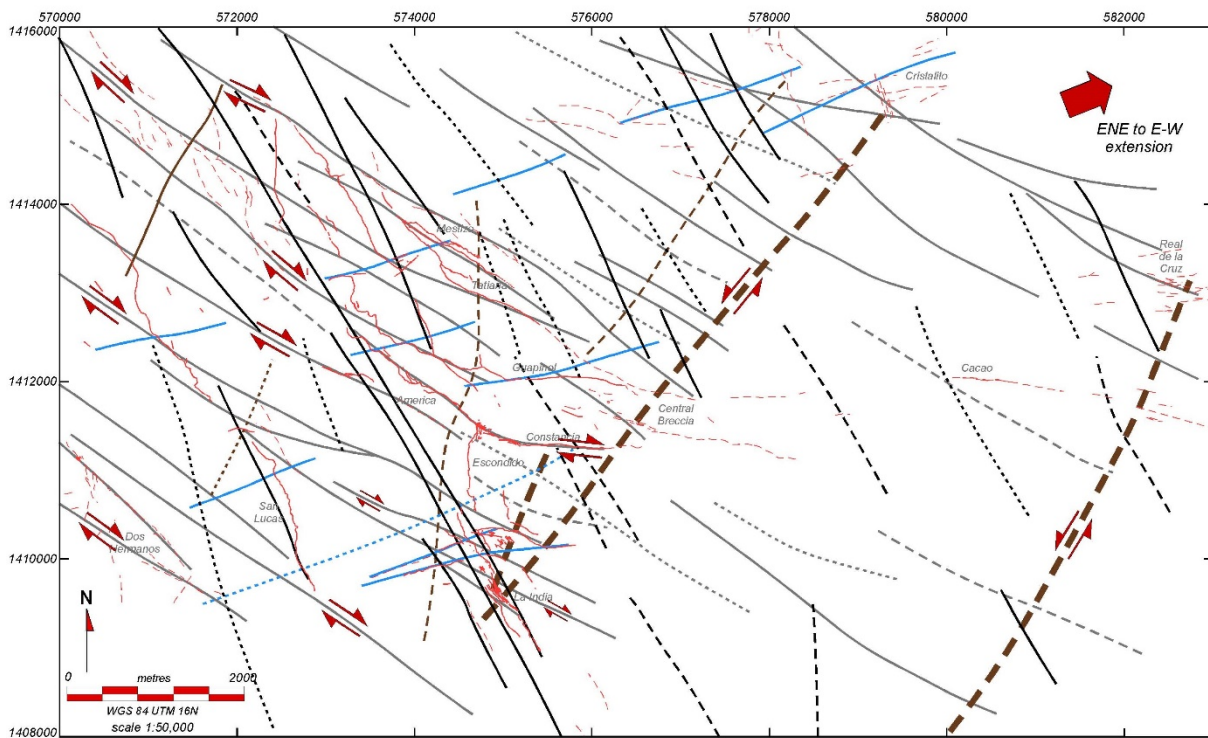


Figure 3. Deep NNW structure reactivated during the main gold mineralisation D2 Deformation Phase shown as yellow lines over a Total Magnetic Intensity image created from Condor's 2013 helicopter-borne aeromagnetic survey.

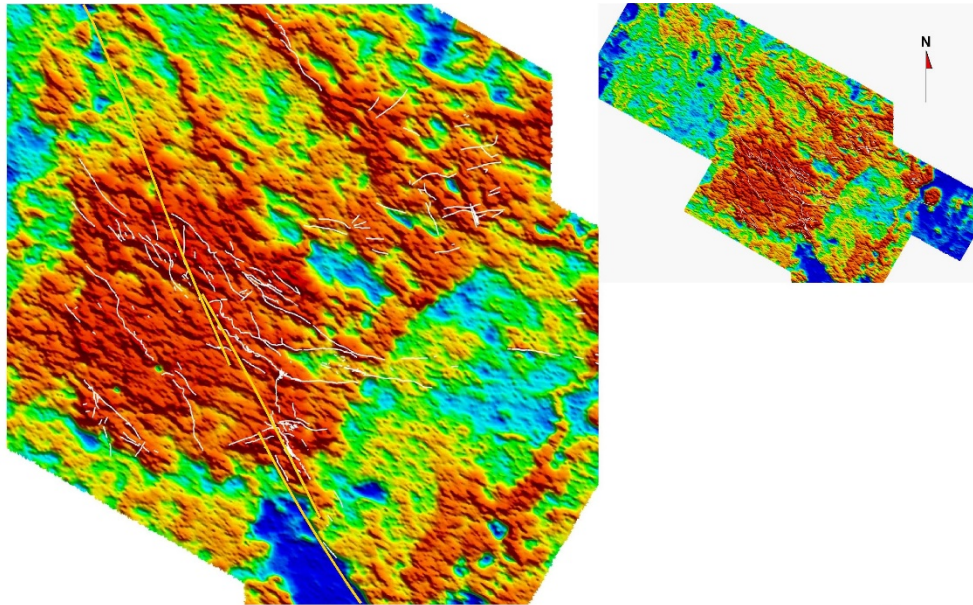


Figure 4. Structures reactivated during the late to post-mineralisation D3 Deformation Phase. Downthrown blocks in green.

