

Figure 1: Future Infrastructure Site and One-kilometre Underground Access Tunnel in the Higabra Valley

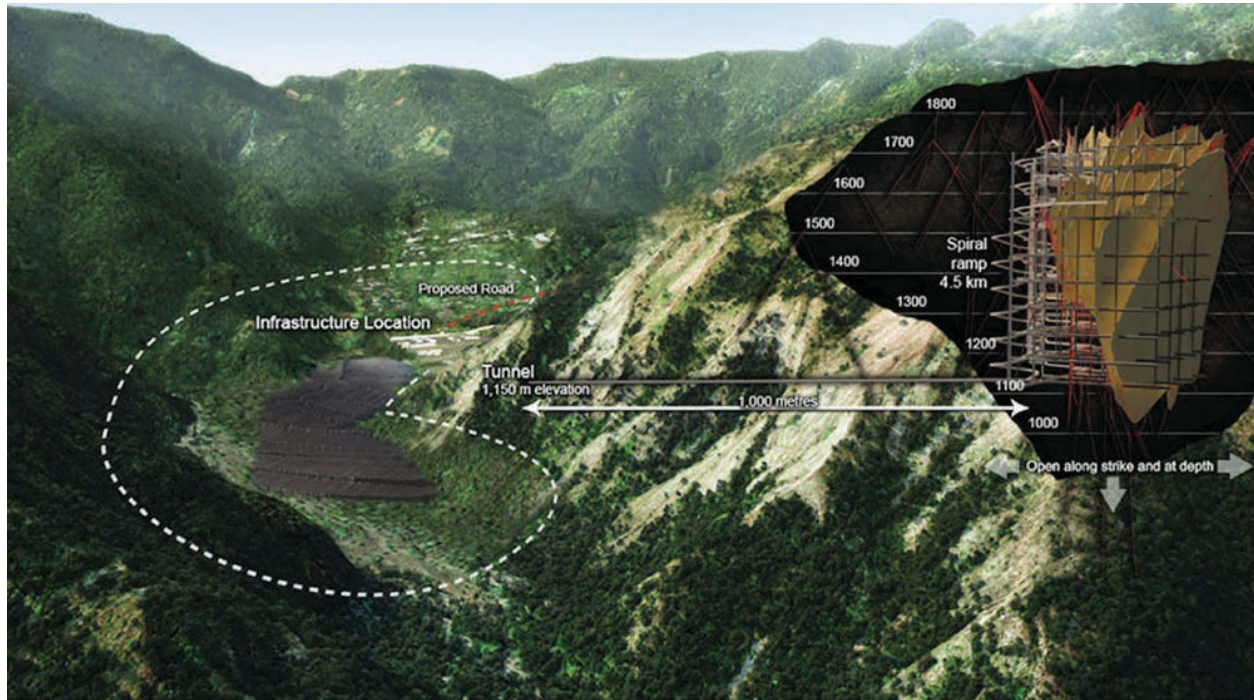


Figure 2: One-kilometre Underground Access Tunnel in the Higabra Valley

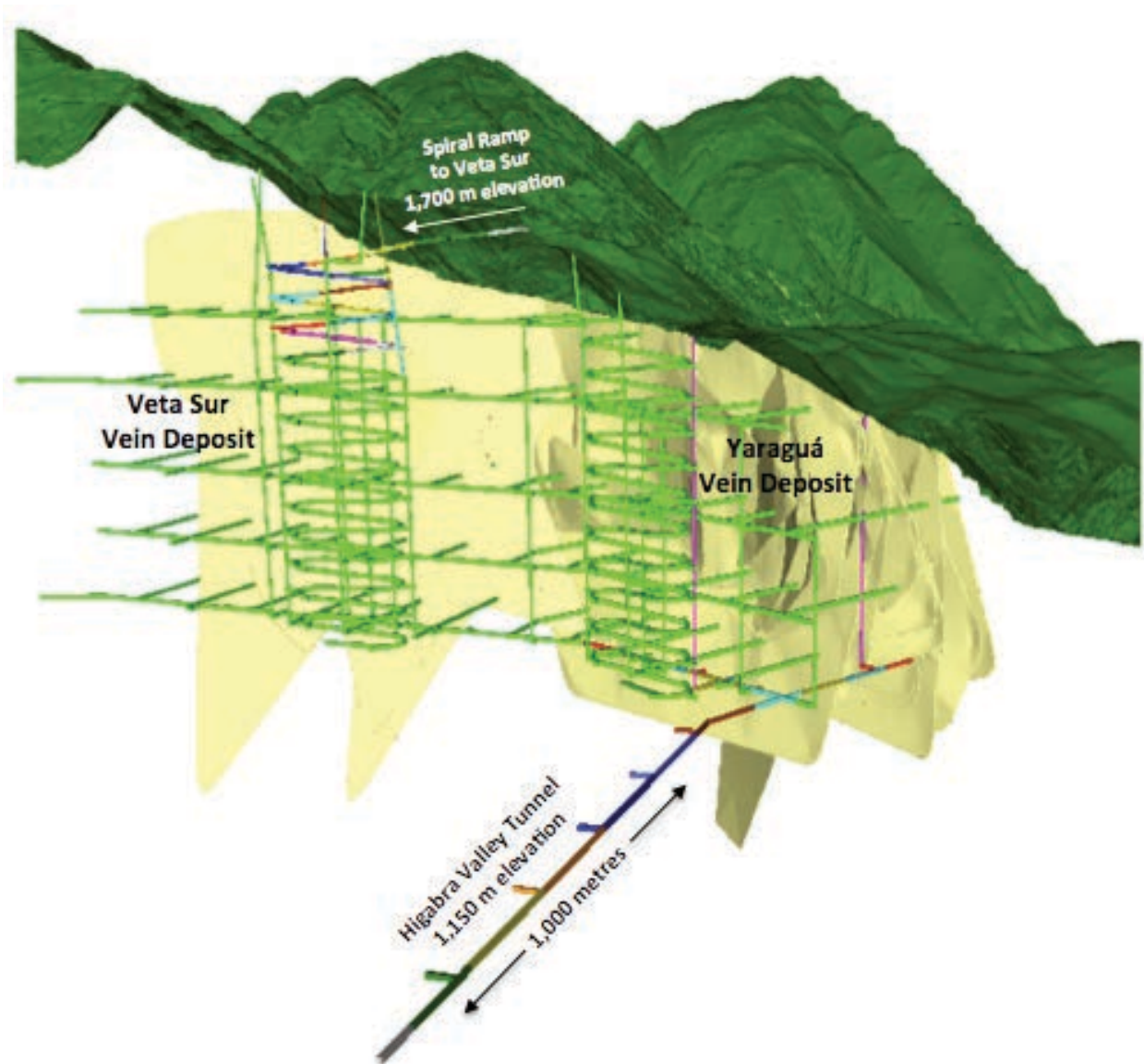


Figure 3: Ramp Accessing Veta Sur System

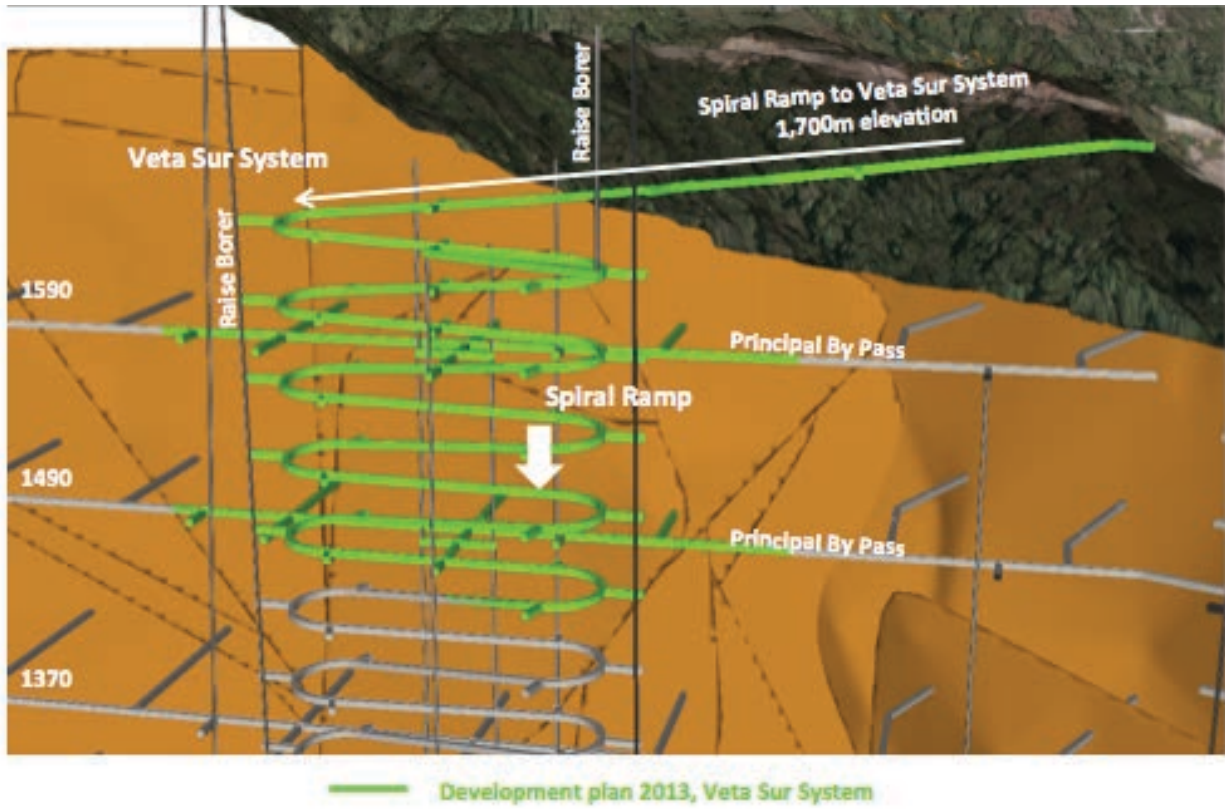


Figure 4: Six-kilometre Switchback Road Connecting Existing Main Paved Road with Future Infrastructure Site in the Higabra Valley

