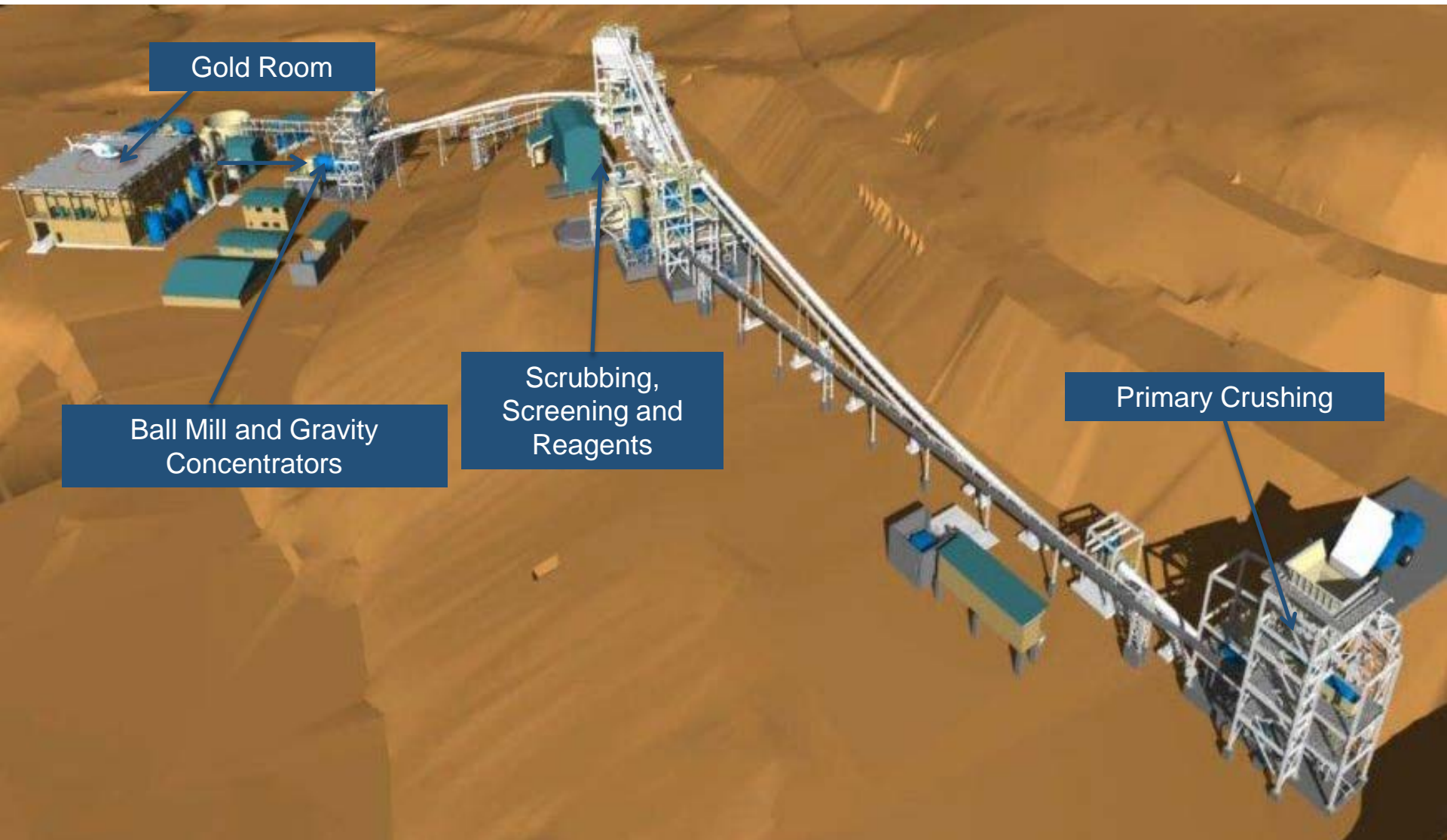


# Serra Pelada

Construction and Development  
Update – November 2013



















# Primary Crushing, Scrubbing & Screening

















# Tailings Thickener





# Tailings Thickener







# Master Control Centre

HARDSCAPE AROUND MCC COMPLETE







1 – Spillway & Diversion Channel discharge

2 – Compaction of engineered fill;

3 – Placement of Vertical Filter;

4 – Preparation of engineered fill;

5 – Dumping & spreading fill;

6 – Drainage control on downstream slope

# Underground

## PUMP STATION UPGRADE







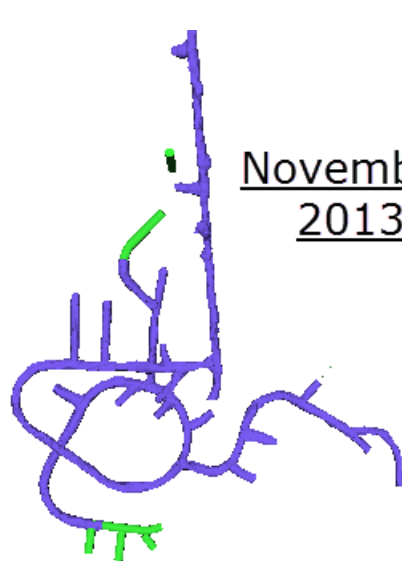




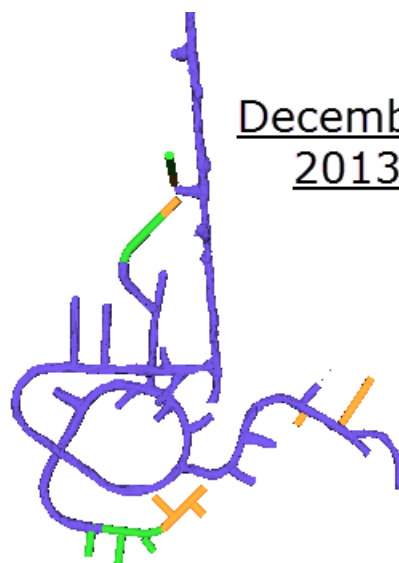




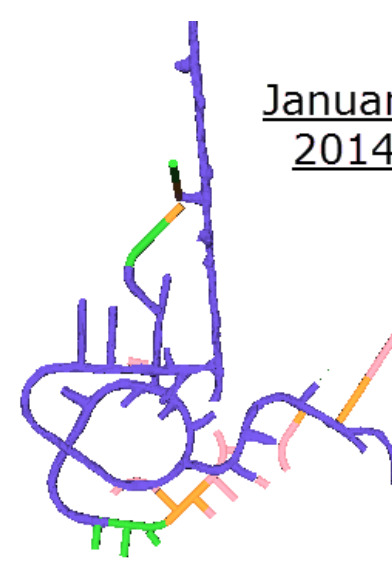




November  
2013



December  
2013

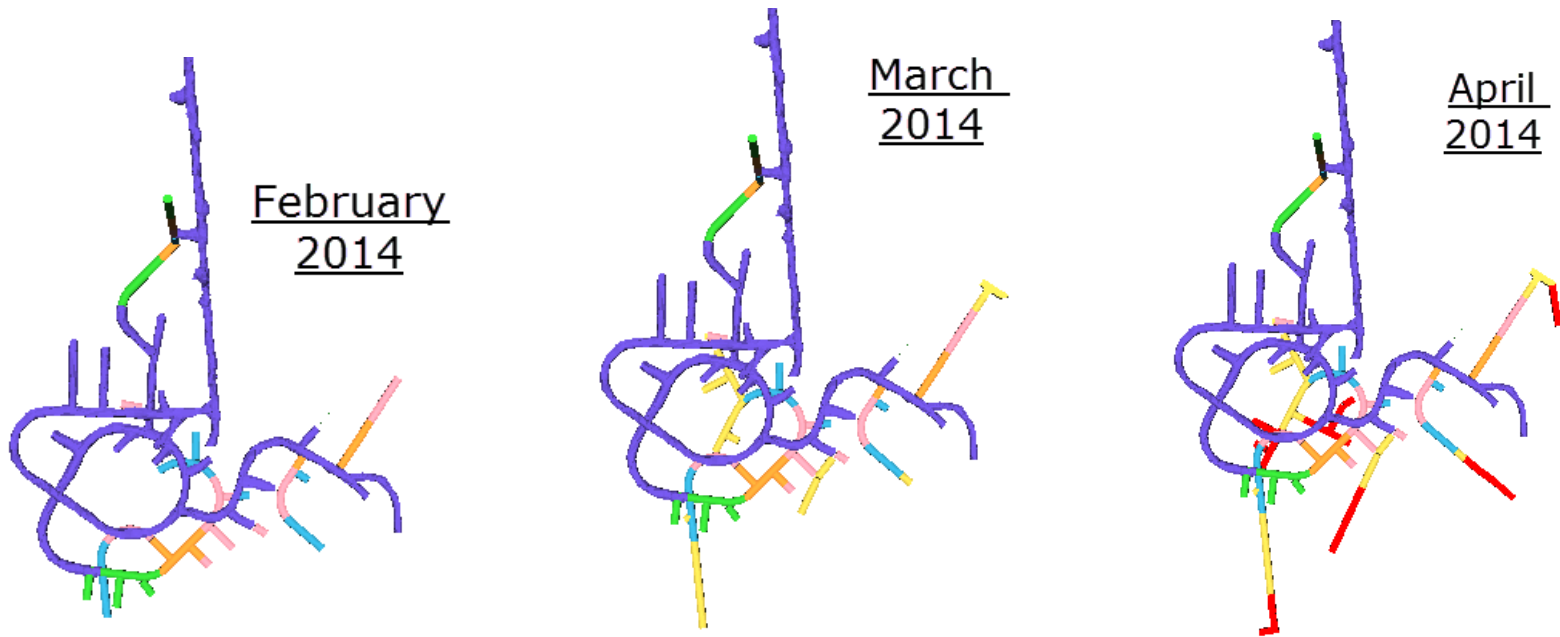


January  
2014

- Nov 2013 – Decline, Remuck and Vent Access
- Dec 2013 – Decline, Sump, Ore Access x4 started, Vent Access complete to Hor1 and Hor2
- Jan 2014– Decline, Ore Access x 4 started – to Hor1, Hor2, Hor3

COLOUR	From Date
5	1 Nov 2013
3	1 Dec 2013
17	1 Jan 2014





February  
2014

March  
2014

April  
2014

Feb 2014 – Decline, Ore Access advance x 4 headings

Mar 2014 – Decline and Ore Access x 5 headings

Apr 2014 – Advance access and ore production. Decline continues

COLOUR	From Date
5	1 Nov 2013
3	1 Dec 2013
17	1 Jan 2014
6	1 Feb 2014
4	1 Mar 2014
9	1 Apr 2014

TSX: CSI  
[www.colossusminerals.com](http://www.colossusminerals.com)  
OTCQX: COLUF

Colossus Minerals Inc.  
1 University Avenue, Suite 401  
Toronto, ON M5J 2P1

416.643.7655  
[info@colossusminerals.com](mailto:info@colossusminerals.com)  
[www.colossusminerals.com](http://www.colossusminerals.com)

**Ann Wilkinson**  
Vice President, Investor Relations

