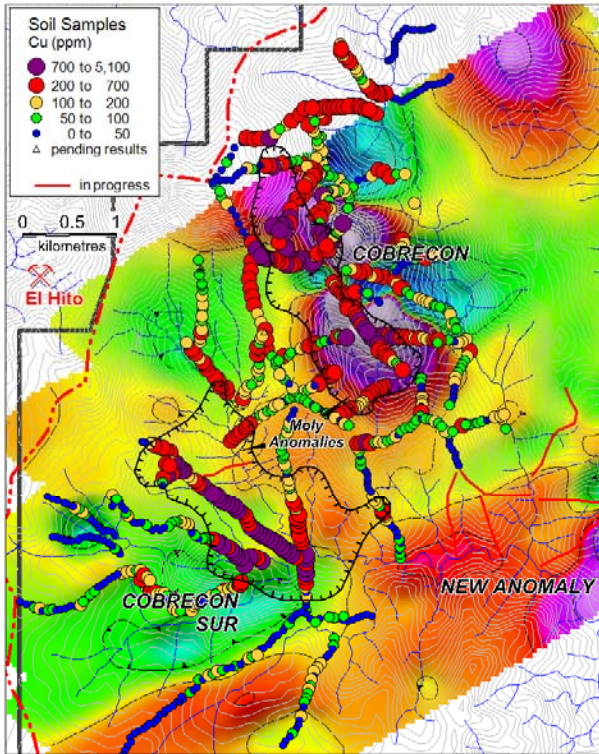
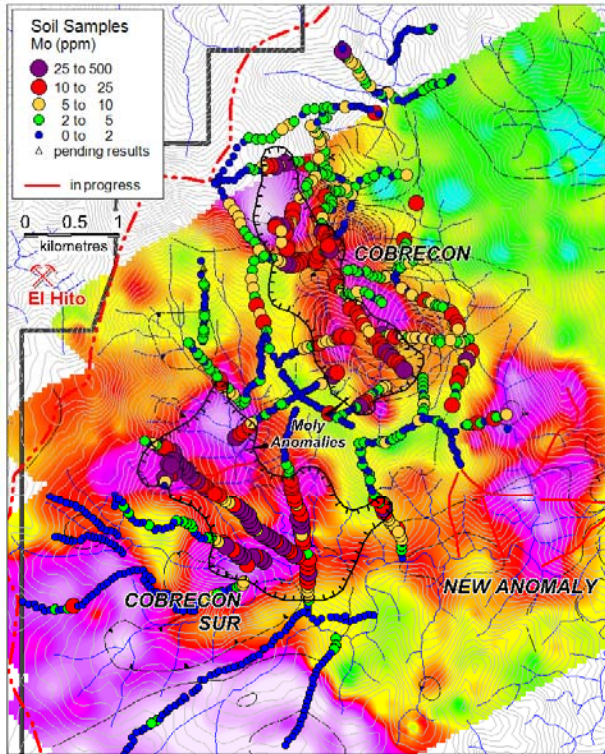


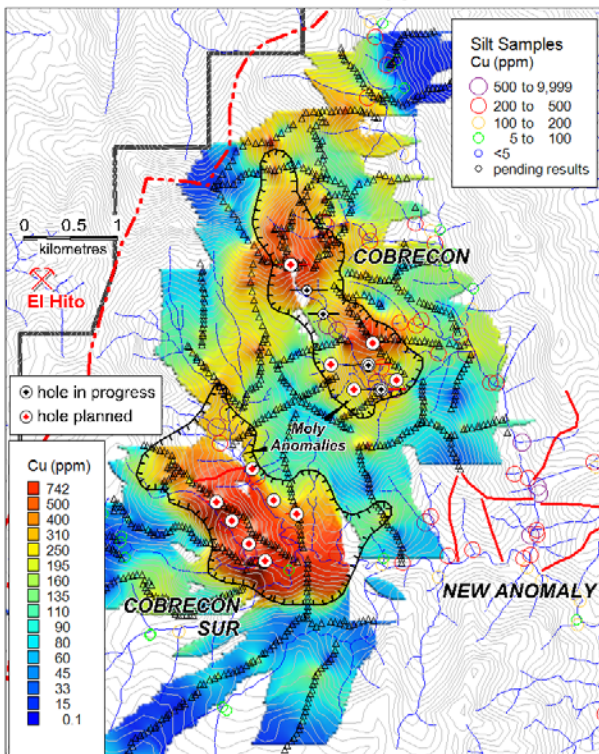
**Airborne TMI Magnetics & Soil Copper**



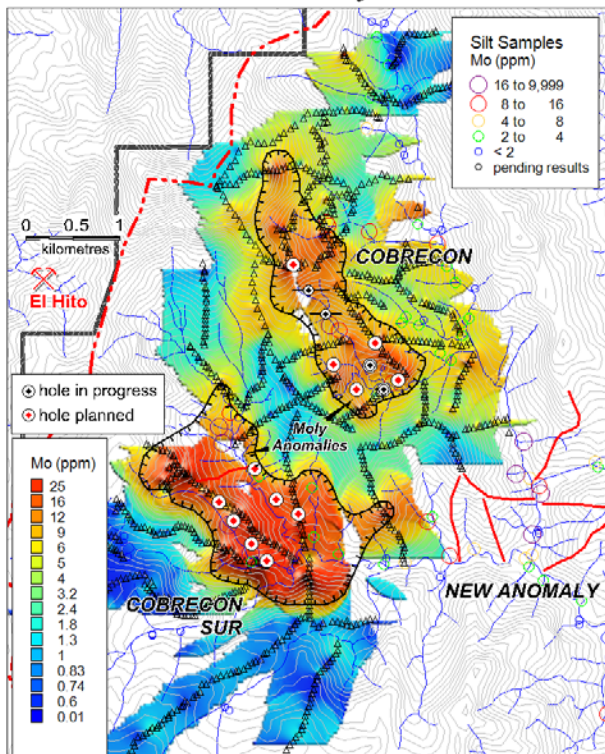
**Airborne EM & Soil Molybdenum**



**Gridded Soil Copper**



**Gridded Soil Molybdenum**



**Figure 3: Regional View of Cobrecon and Cobrecon Sur - Airborne magnetic, airborne EM, and gridded copper and molybdenum soil anomalies.** Additional planned soil sampling is shown in red lines; note correlation of anomalous silt samples and the EM anomaly.