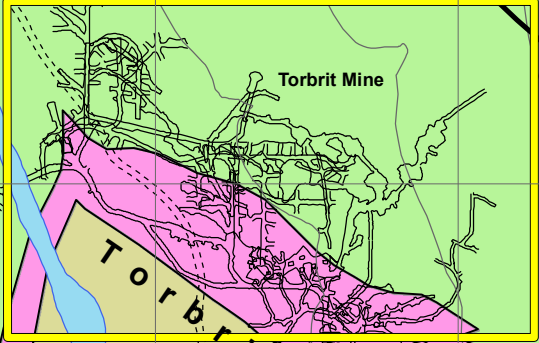


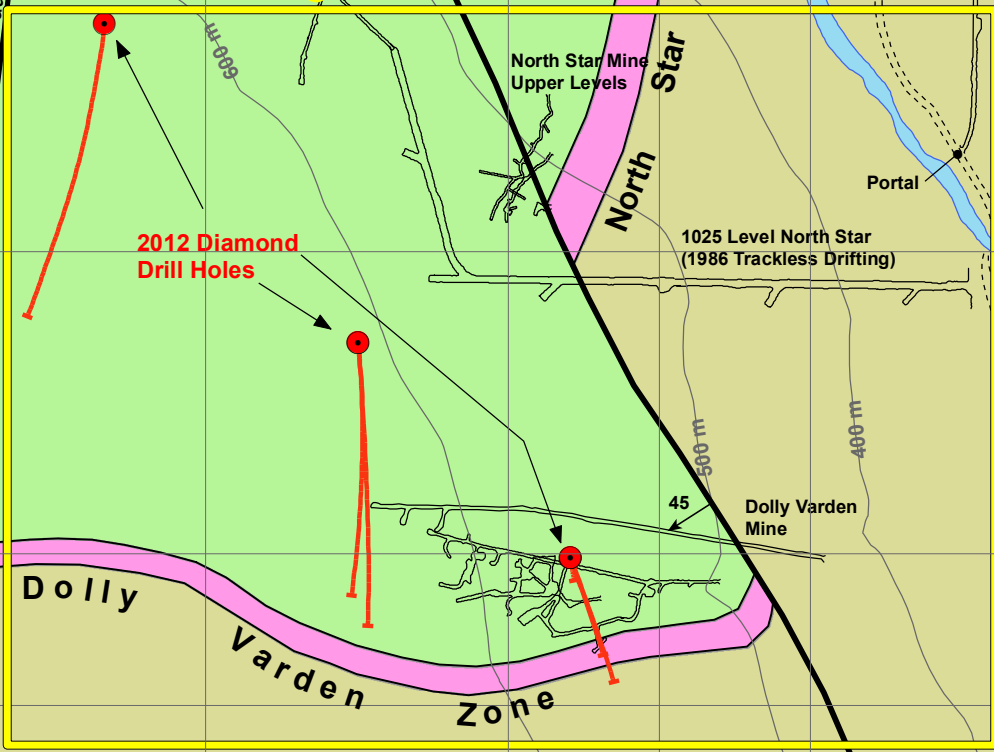
# Location of 2012 Exploration Work



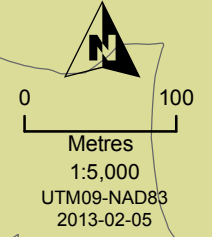
## 2012 Torbrit Underground Work



## 2012 Diamond Drill Program

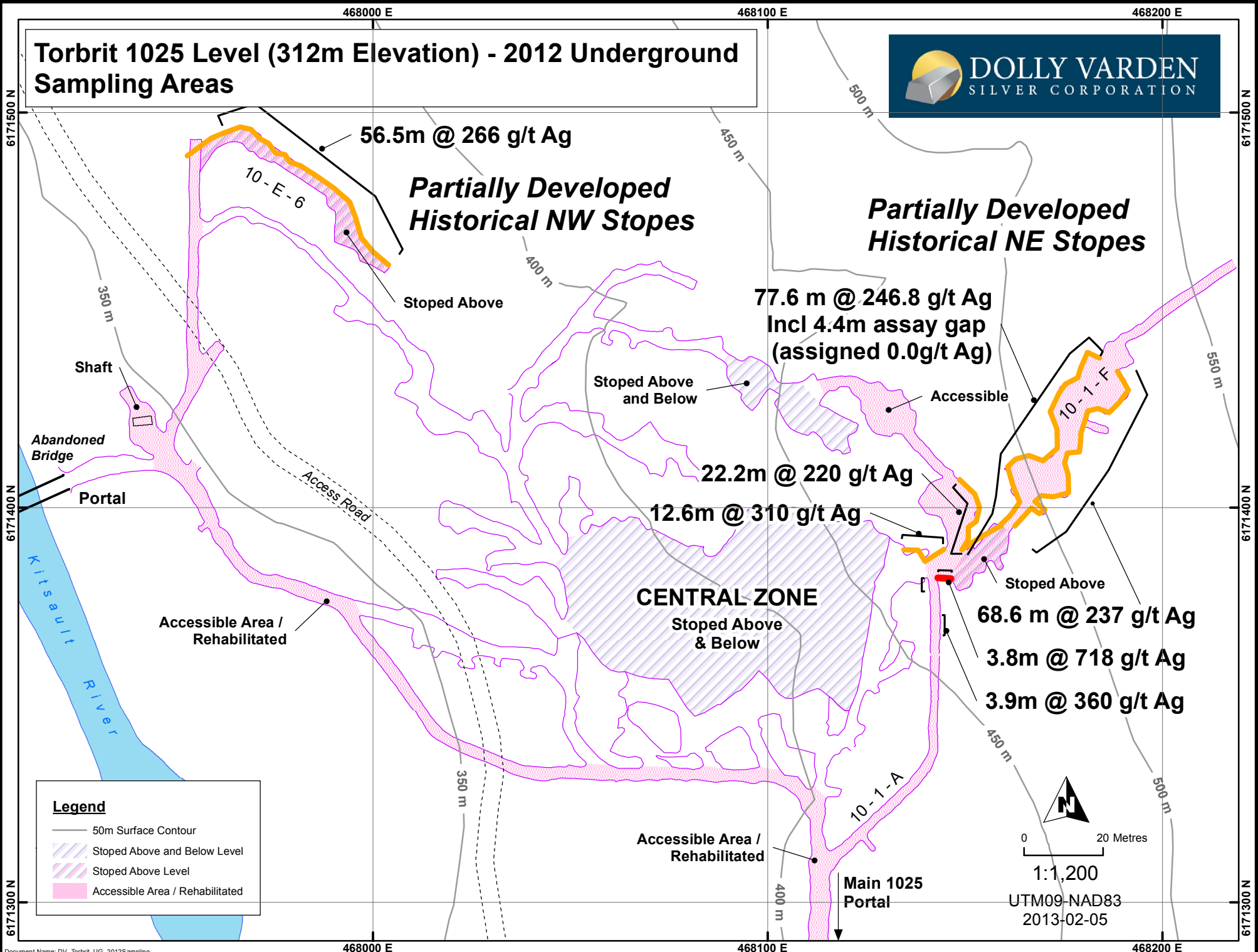


2012 Diamond Drill Holes



Legend	
Property Geology	
<span style="display:inline-block; width:15px; height:10px; background-color: #FF69B4; border: 1px solid black;"></span>	Exhalitive & Mineralized Horizon
<span style="display:inline-block; width:15px; height:10px; background-color: #90EE90; border: 1px solid black;"></span>	Upper Betty Creek Volcanic Rocks
<span style="display:inline-block; width:15px; height:10px; background-color: #D2B48C; border: 1px solid black;"></span>	Lower Betty Creek Volcaniclastic rocks

# Torbrit 1025 Level (312m Elevation) - 2012 Underground Sampling Areas



**Legend**

- 50m Surface Contour
- Stopped Above and Below Level
- Stopped Above Level
- Accessible Area / Rehabilitated

North Arrow

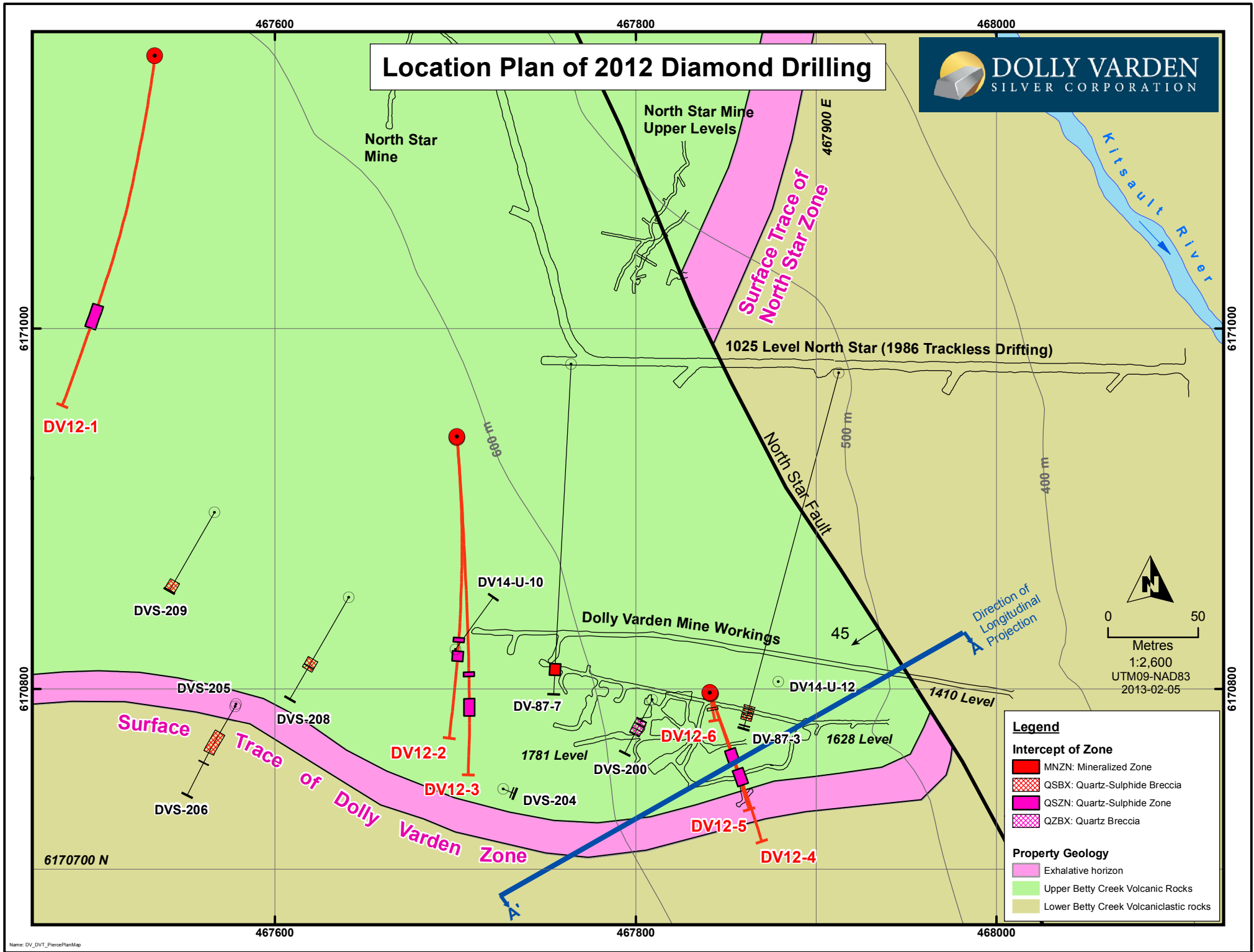
0 20 Metres

1:1,200

UTM09-NAD83

2013-02-05

# Location Plan of 2012 Diamond Drilling



**Legend**

**Intercept of Zone**

- MNZN: Mineralized Zone
- QSBX: Quartz-Sulphide Breccia
- QSZN: Quartz-Sulphide Zone
- QZBX: Quartz Breccia

**Property Geology**

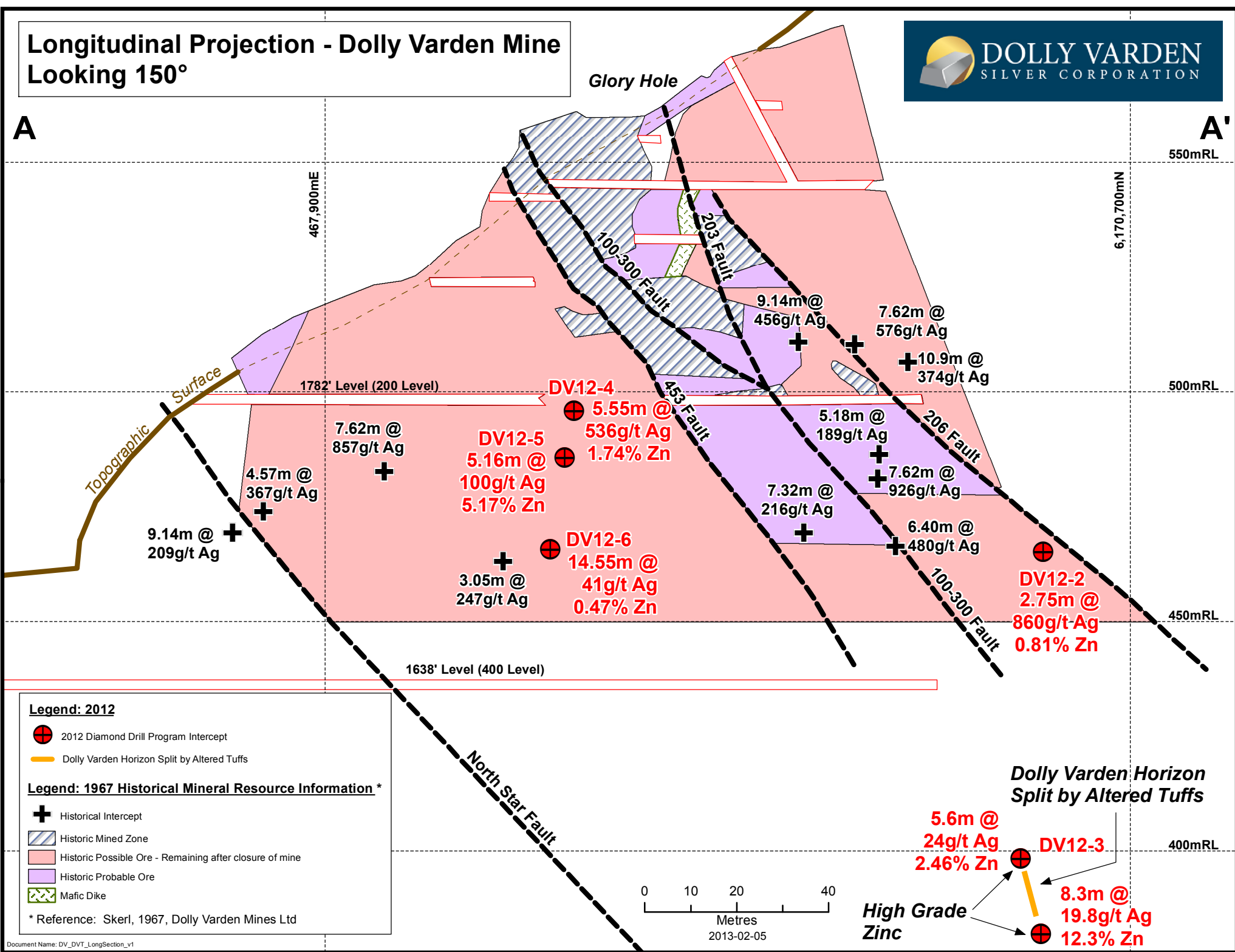
- Exhalative horizon
- Upper Betty Creek Volcanic Rocks
- Lower Betty Creek Volcaniclastic rocks

# Longitudinal Projection - Dolly Varden Mine Looking 150°



A

A'



### Legend: 2012

- 2012 Diamond Drill Program Intercept
- Dolly Varden Horizon Split by Altered Tuffs

### Legend: 1967 Historical Mineral Resource Information \*

- Historical Intercept
- Historic Mined Zone
- Historic Possible Ore - Remaining after closure of mine
- Historic Probable Ore
- Mafic Dike

\* Reference: Skerl, 1967, Dolly Varden Mines Ltd

