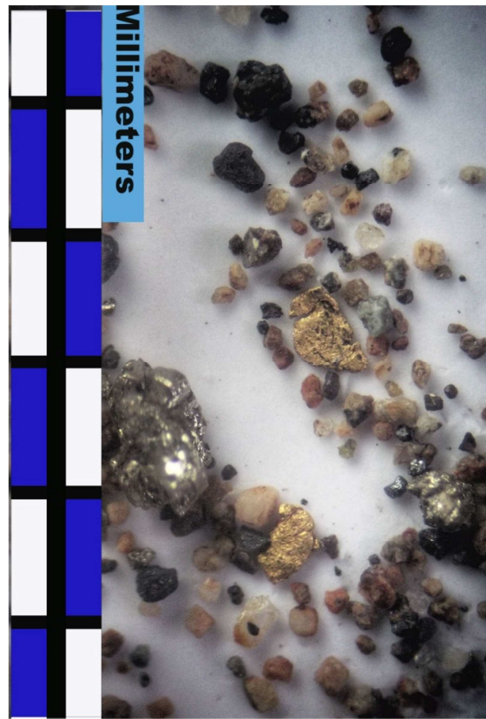


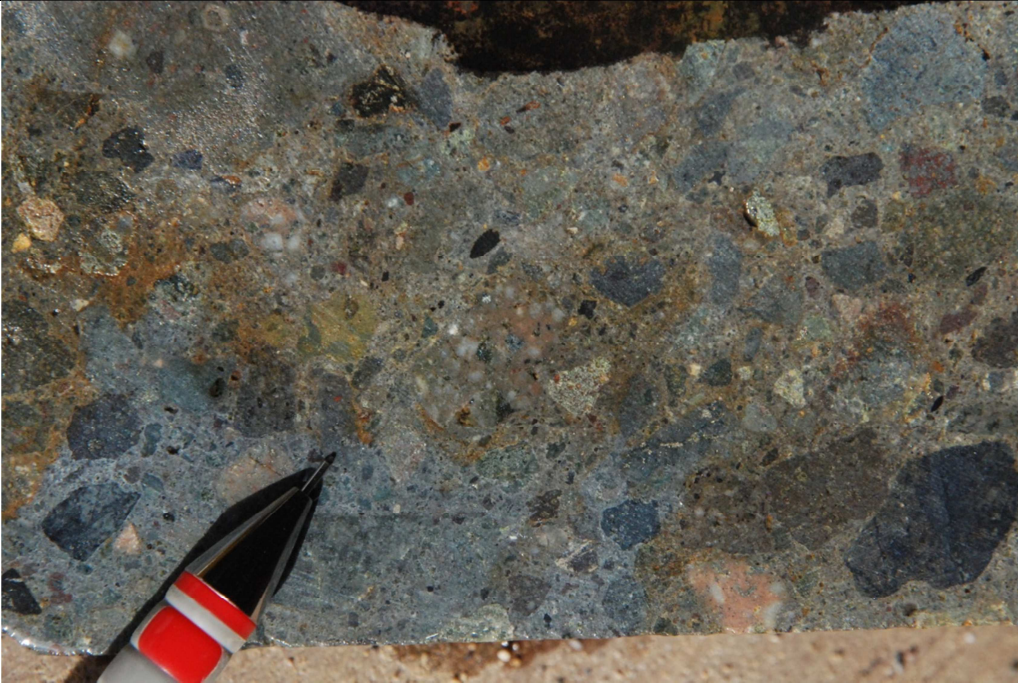
IP Chargeability 1350m level map showing shallow drill holes completed and planned targets in the Misahuallí-Suarez basin. Hole RZDDH11-04 is located in the northeast corner of the property in the FdN Offset target



Operator and Scintrex CG-5 gravimeter



Optical photomicrograph of pan concentrate from Rio Blanco Suarez Fm polymictic conglomerate with agglomerate matrix sample: Au grains with predominantly sulphides, magnetite and quartz grains



Suarez Fm polymictic conglomerate with agglomerate matrix, strongly silicified, abundant fresh sulphides in clasts and matrix, Au in crushed pan concentrate from structure/vein oriented 350° azimuth 85°E