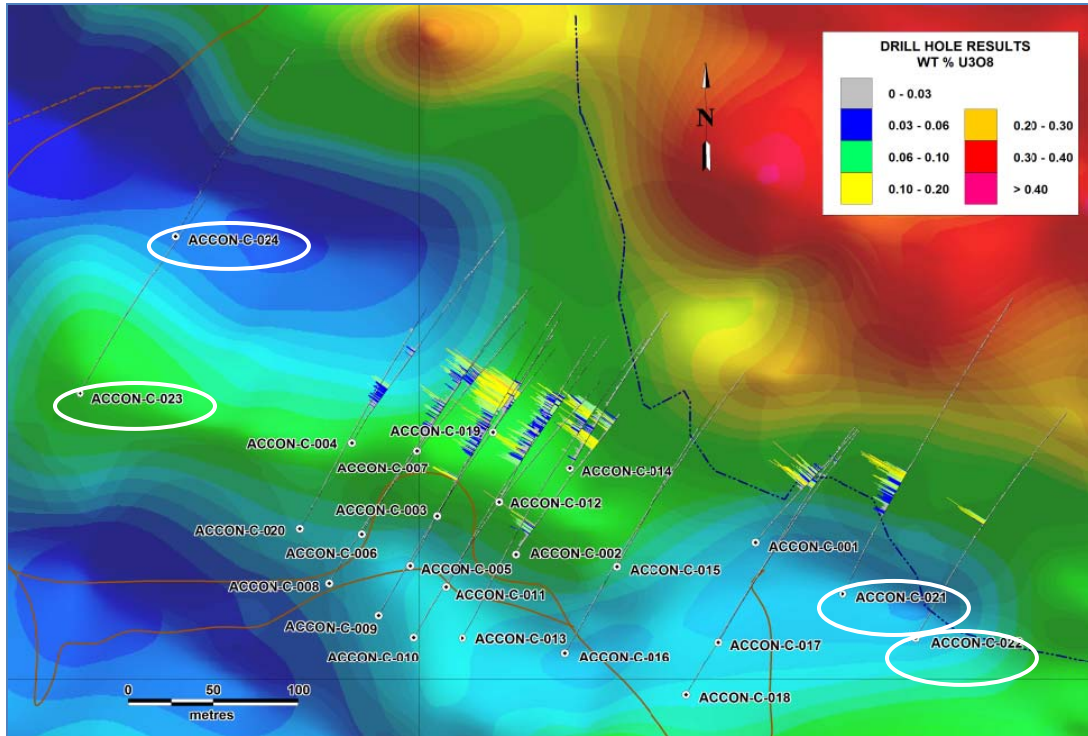


Figure 2 – Drill Hole Locations of the Accori North C Structure



Plan view of the location of bore holes drilled in the scout drilling program on the extensions of the Accori North C structural corridor shown on a map of ground magnetic data (cool colours – blue and green – mark least magnetic areas while warm colours – orange and red – mark areas of more intense magnetism).

The four holes from which assay results are reported in this press release are identified by their labels (outlined by white circles). Holes ACCON-C-021 and ACCON-C-022 confirmed the presence and width of a second mineralized shoot, while the objective of holes ACCON-C-023 and ACCON-C-024 was to explore for uranium where the structural corridor extends into the sedimentary sequence that lies adjacent to the granites of the Kurupung Batholith. The collar position of each hole is shown as a dot and the extent of each inclined hole is shown as a black line. U₃O₈ grade (%) is shown as a histogram along the trace of each bore hole.