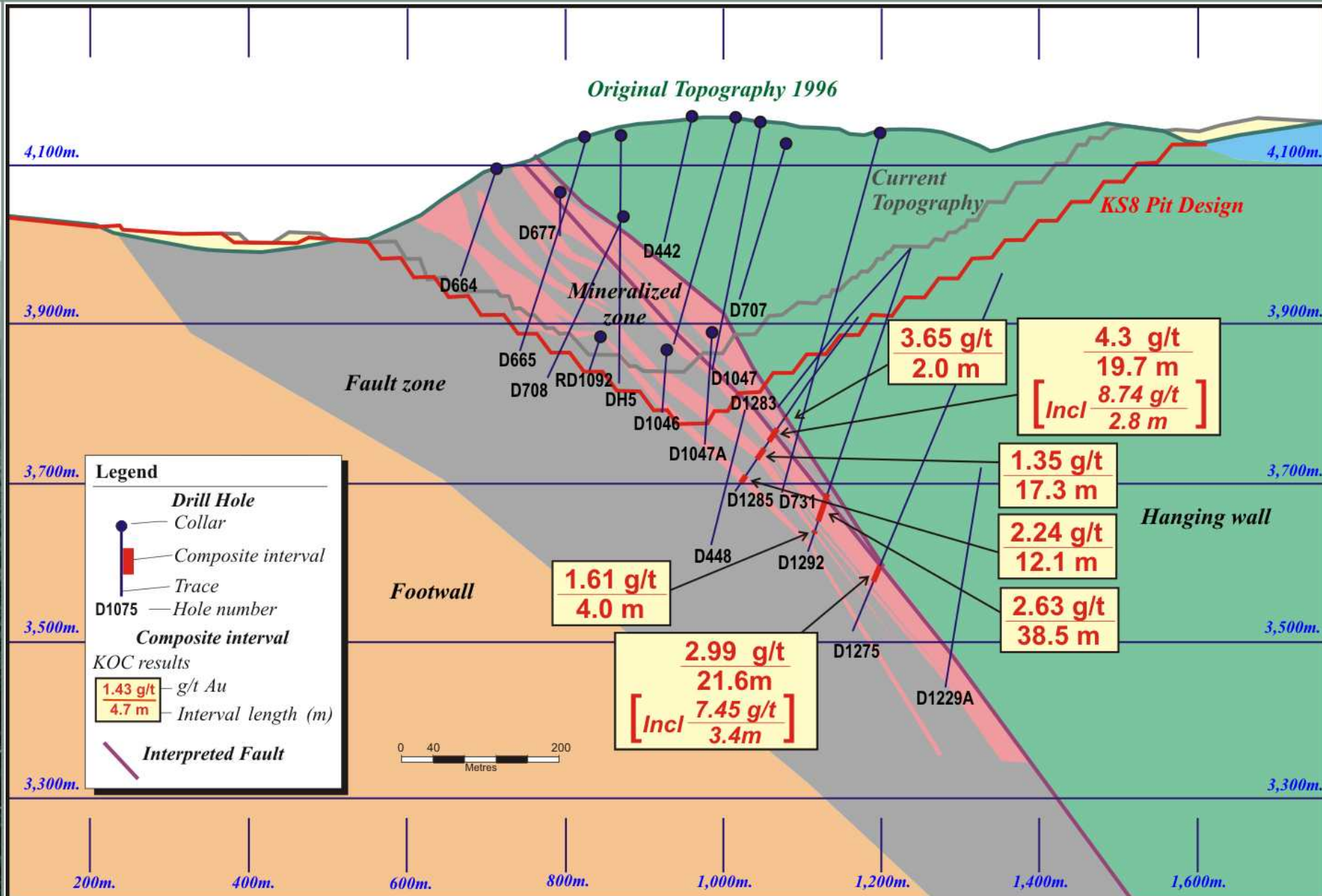
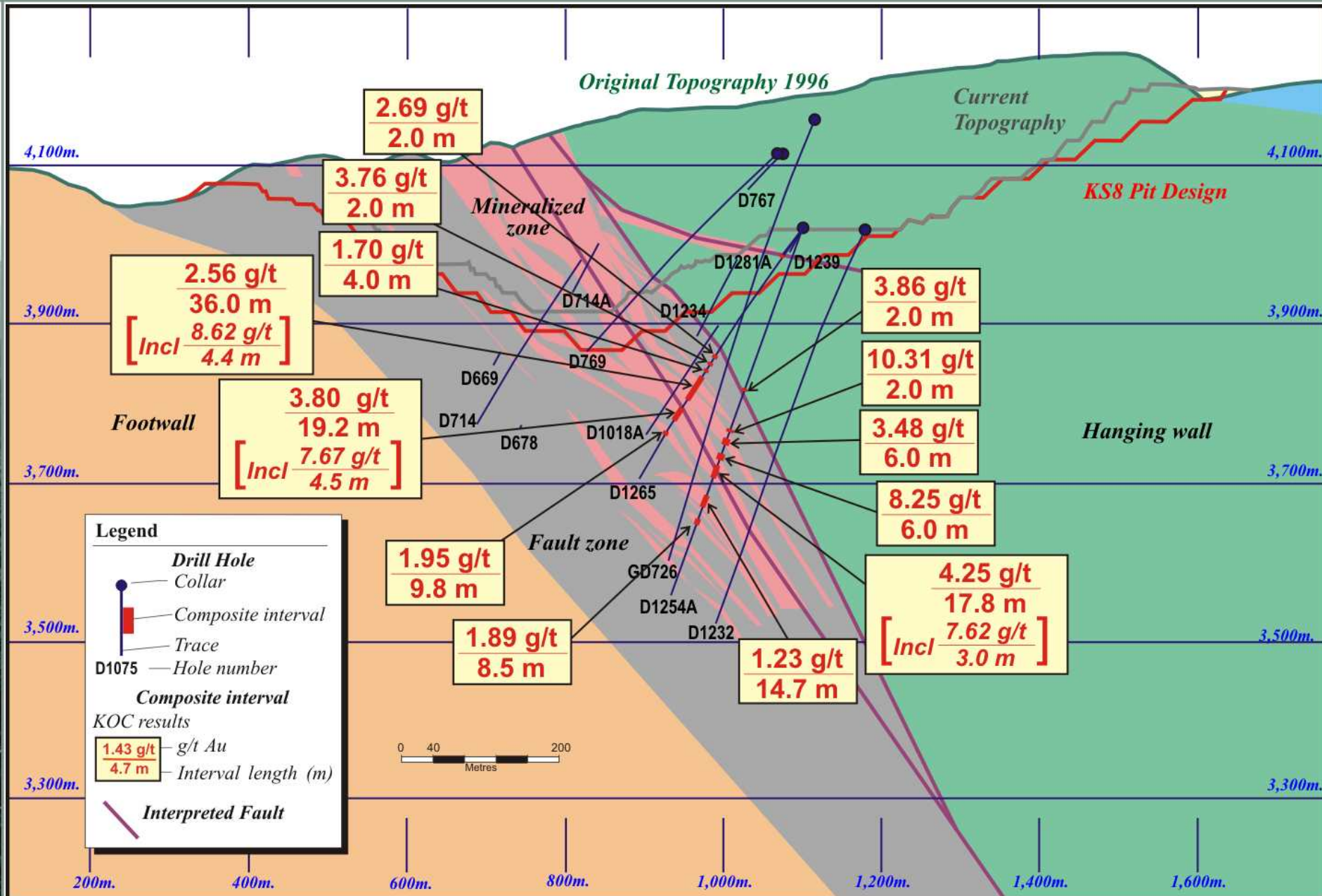


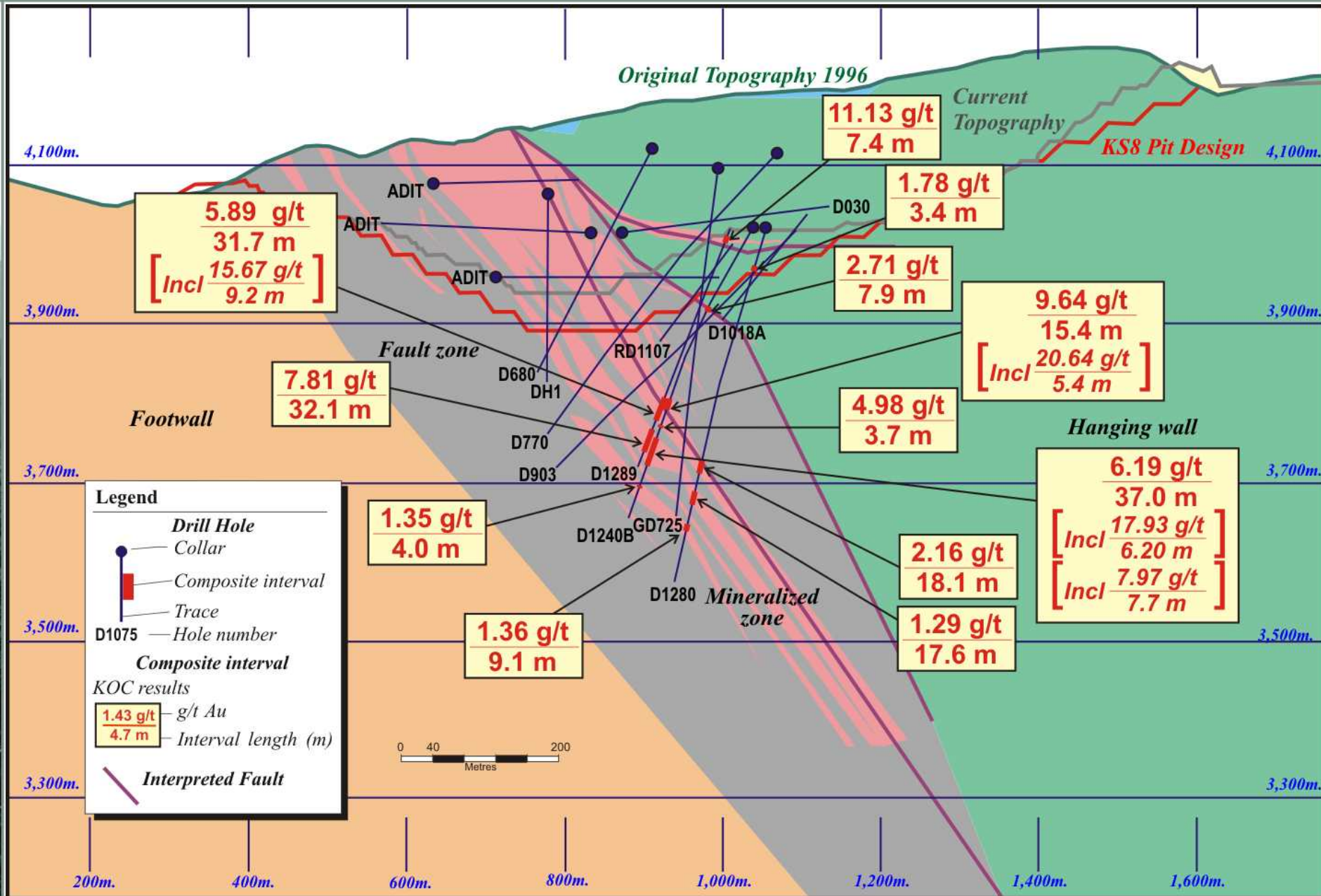
# Kumtor Q4 2008 – Section 106



# Kumtor Q4 2008 – Section 142

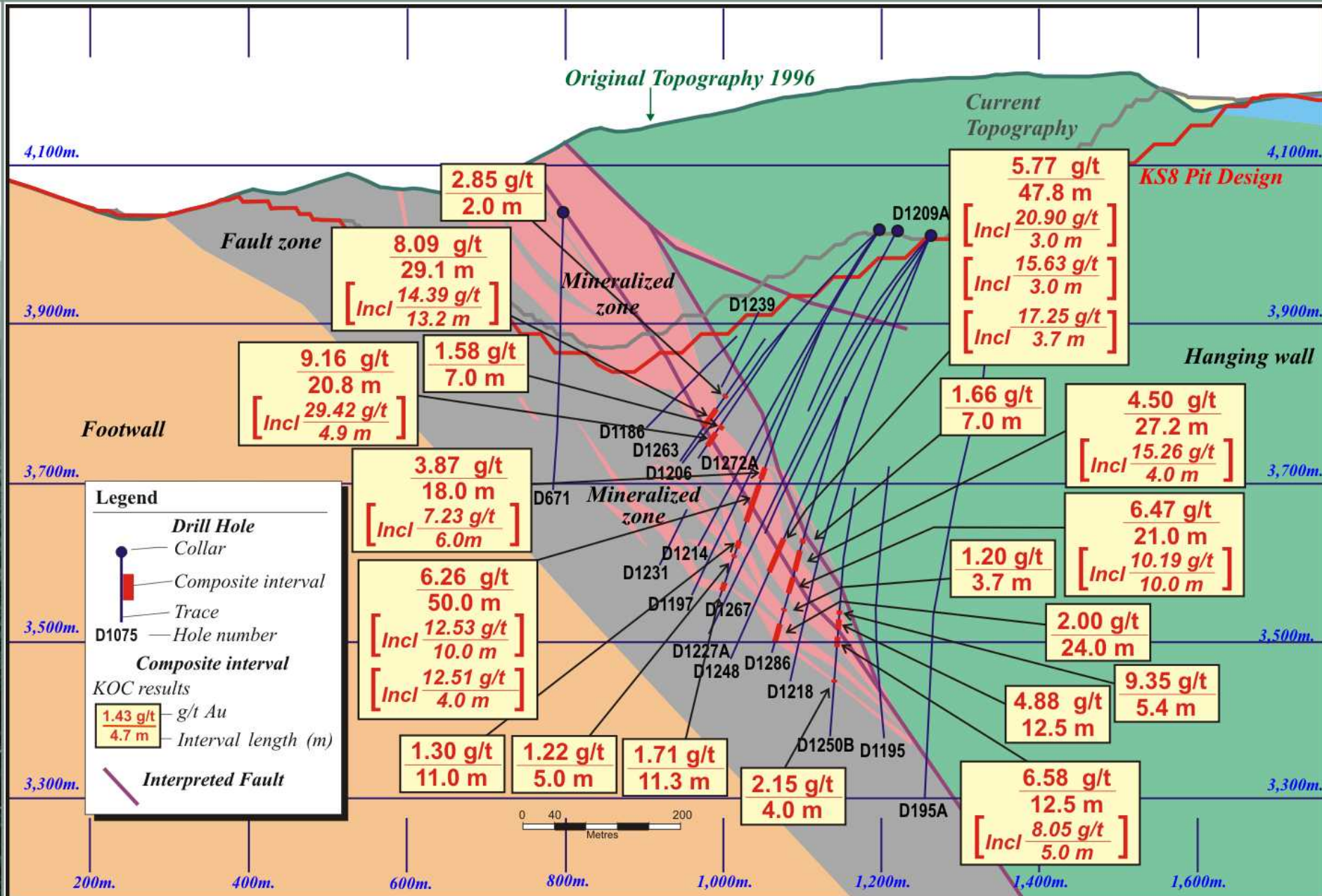


# Kumtor Q4 2008 – Section 146

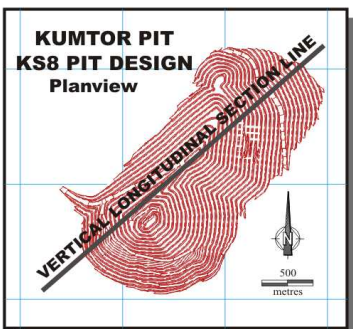




# Kumtor Q4 2008 – Section 134



# Kumtor Q4 2008 – Au Grade \* Thickness Vertical Longitudinal Section



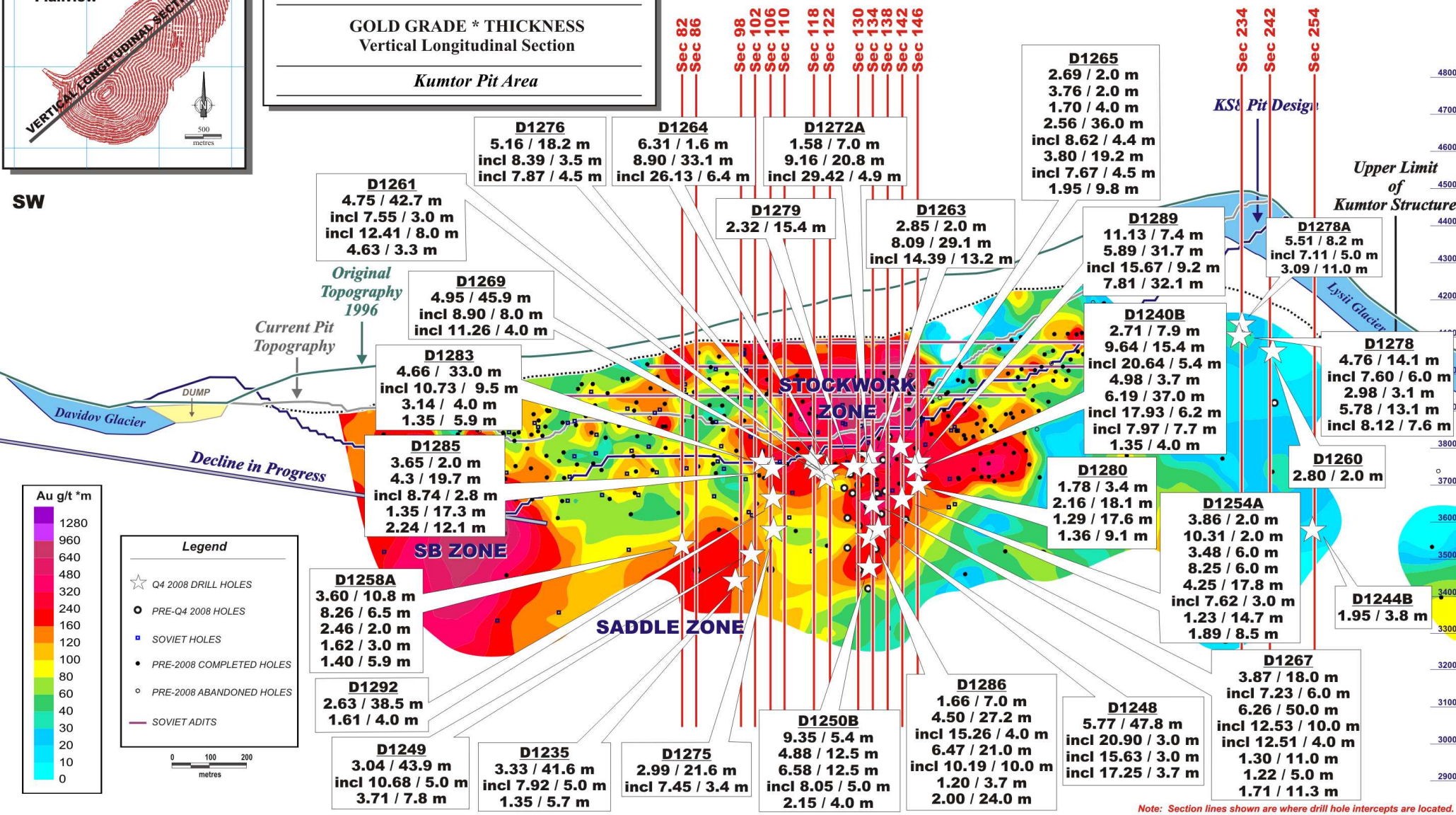
**KUMTOR EXPLORATION**  
4th Quarter 2008

**GOLD GRADE \* THICKNESS  
Vertical Longitudinal Section**

*Kumtor Pit Area*

SW

NE



Note: Section lines shown are where drill hole intercepts are located.



## 2008 Kumtor Project Drilling Results

Period October 1st to December 31st, 2008

Page 1 of 2

Drill Hole	Location	Drill Section	From (m)	To (m)	Core Length (m)	Au (g/t)	
D1235	Saddle Zone	98	635.1	676.7	41.6	3.33	
			<i>includes</i>	661.9	666.9	5.0	7.92
				686.9	692.6	5.7	1.35
D1240B	Stockwork Zone	146	111.9	119.8	7.9	2.71	
				238.4	253.8	15.4	9.64
			<i>includes</i>	246.6	252.0	5.4	20.64
				274.0	277.7	3.7	4.98
				291.5	328.5	37.0	6.19
			<i>includes</i>	293.4	299.6	6.2	17.93
	<i>includes</i>	305.6	313.3	7.7	7.97		
			355.2	359.2	4.0	1.35	
D1244	Northeast Extension	254	<i>Hole was stopped due to technical difficulties before target was reached</i>				
D1244A	Northeast Extension	254	<i>Hole was stopped due to technical difficulties before target was reached</i>				
D1244B	Northeast Extension	254	970.0	973.8	3.8	1.95	
D1248	Stockwork Zone	134	422.0	469.8	47.8	5.77	
			<i>includes</i>	433.0	436.0	3.0	20.90
			<i>includes</i>	451.0	454.0	3.0	15.63
			<i>includes</i>	463.1	466.8	3.7	17.25
D1249	Saddle Zone	102	535.0	578.9	43.9	3.04	
			<i>includes</i>	536.0	541.0	5.0	10.68
				634.3	642.1	7.8	3.71
D1250A	Stockwork Zone	130	<i>Hole was stopped due to technical difficulties before target was reached</i>				
D1250B	Stockwork Zone	134	486.1	491.5	5.4	9.35	
				497.5	510.0	12.5	4.88
				519.5	532.0	12.5	6.58
			<i>includes</i>	525.2	530.2	5.0	8.05
			573.5	577.5	4.0	2.15	
D1254	Stockwork Zone	142	<i>Hole was stopped due to technical difficulties before target was reached</i>				
D1254A	Stockwork Zone	142	219.5	221.5	2.0	3.86	
				275.0	277.0	2.0	10.31
				287.0	293.0	6.0	3.48
				309.0	315.0	6.0	8.25
				321.0	338.8	17.8	4.25
			<i>includes</i>	324.0	327.0	3.0	7.62
				361.0	375.7	14.7	1.23
				393.8	402.3	8.5	1.89
D1258	Saddle Zone	86	<i>Hole was stopped due to technical difficulties before target was reached</i>				
D1258A	Saddle Zone	82	568.7	579.5	10.8	3.60	
				588.5	595.0	6.5	8.26
				610.0	612.0	2.0	2.46
				627.5	630.5	3.0	1.62
				648.3	654.2	5.9	1.40
D1260	Northeast Extension	242	80.9	82.9	2.0	2.80	
D1261	Stockwork Zone	118	101.5	144.2	42.7	4.75	
			<i>includes</i>	104.0	107.0	3.0	7.55
			<i>includes</i>	122.7	130.7	8.0	12.41
				149.4	152.7	3.3	4.63
D1262	Northeast Extension	254	<i>Hole was stopped due to technical difficulties before target was reached</i>				
D1263	Stockwork Zone	134	259.0	261.0	2.0	2.85	
				278.9	308.0	29.1	8.09
			<i>includes</i>	294.0	307.2	13.2	14.39
D1264	Stockwork Zone	118-122	2.8	4.4	1.6	6.31	
				129.0	162.1	33.1	8.90
			<i>includes</i>	129.0	135.4	6.4	26.13
D1265	Stockwork Zone	142	198.0	200.0	2.0	2.69	
				209.0	211.0	2.0	3.76
				218.0	222.0	4.0	1.70
				229.0	265.0	36.0	2.56
			<i>includes</i>	240.6	245.0	4.4	8.62
				276.0	295.2	19.2	3.80
			<i>includes</i>	277.0	281.5	4.5	7.67
			311.8	321.6	9.8	1.95	

**Notes:** Significant mineralized intervals are greater than 1.00 g/t Au  
Individual assays are top cut to 60 g/t Au prior to composite calculation  
Lower cut-off for higher grade sub-intervals is 7.0 g/t Au  
True widths for mineralized zones are about 40% to 95% of stated down hole interval  
This information should be read together with our news release of February 6th, 2009. Ian Atkinson, a Certified Professional Geologist, is Centerra's qualified person for the purpose of National Instrument 43-101



## 2008 Kumtor Project Drilling Results

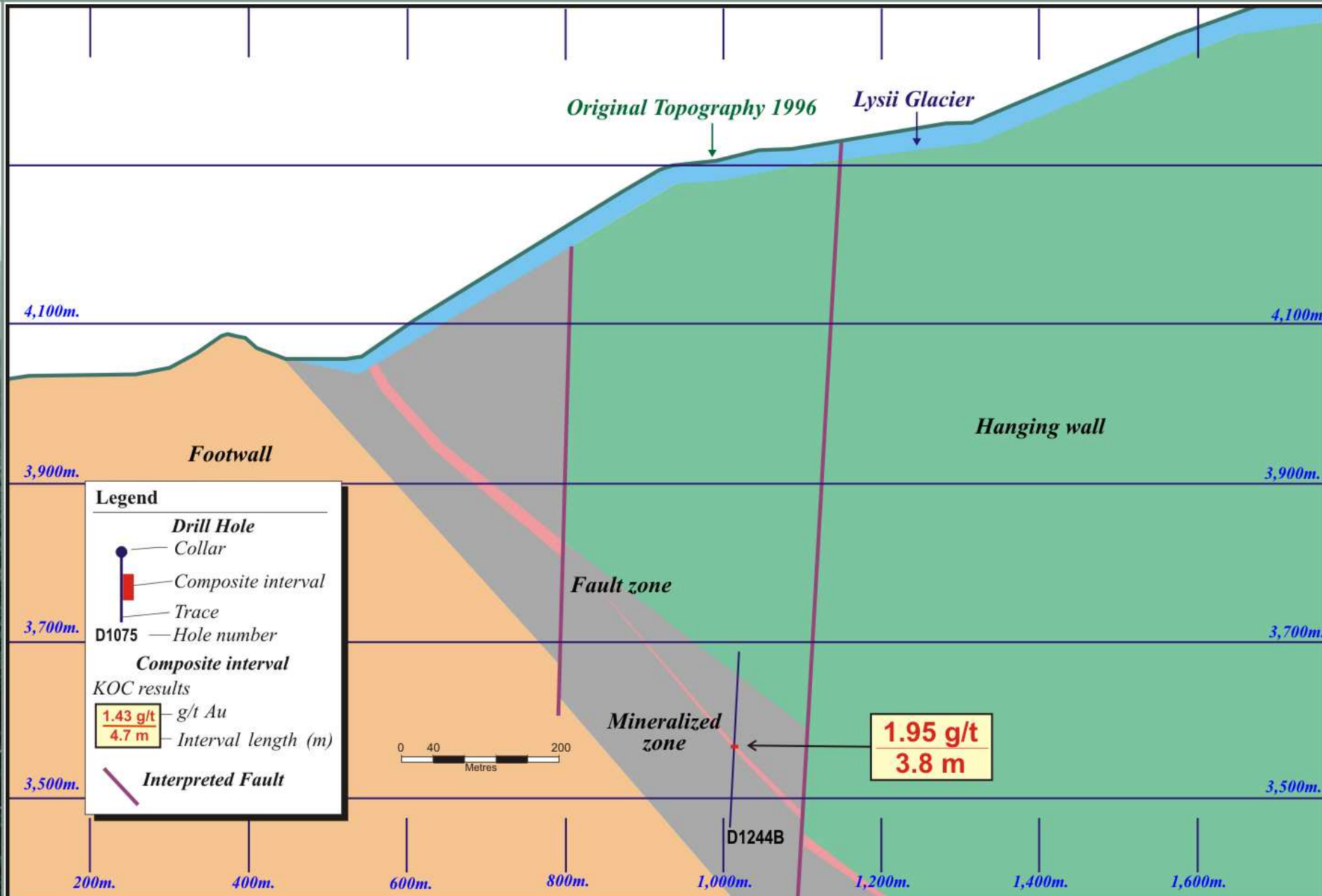
Period October 1st to December 31st, 2008

Page 2 of 2

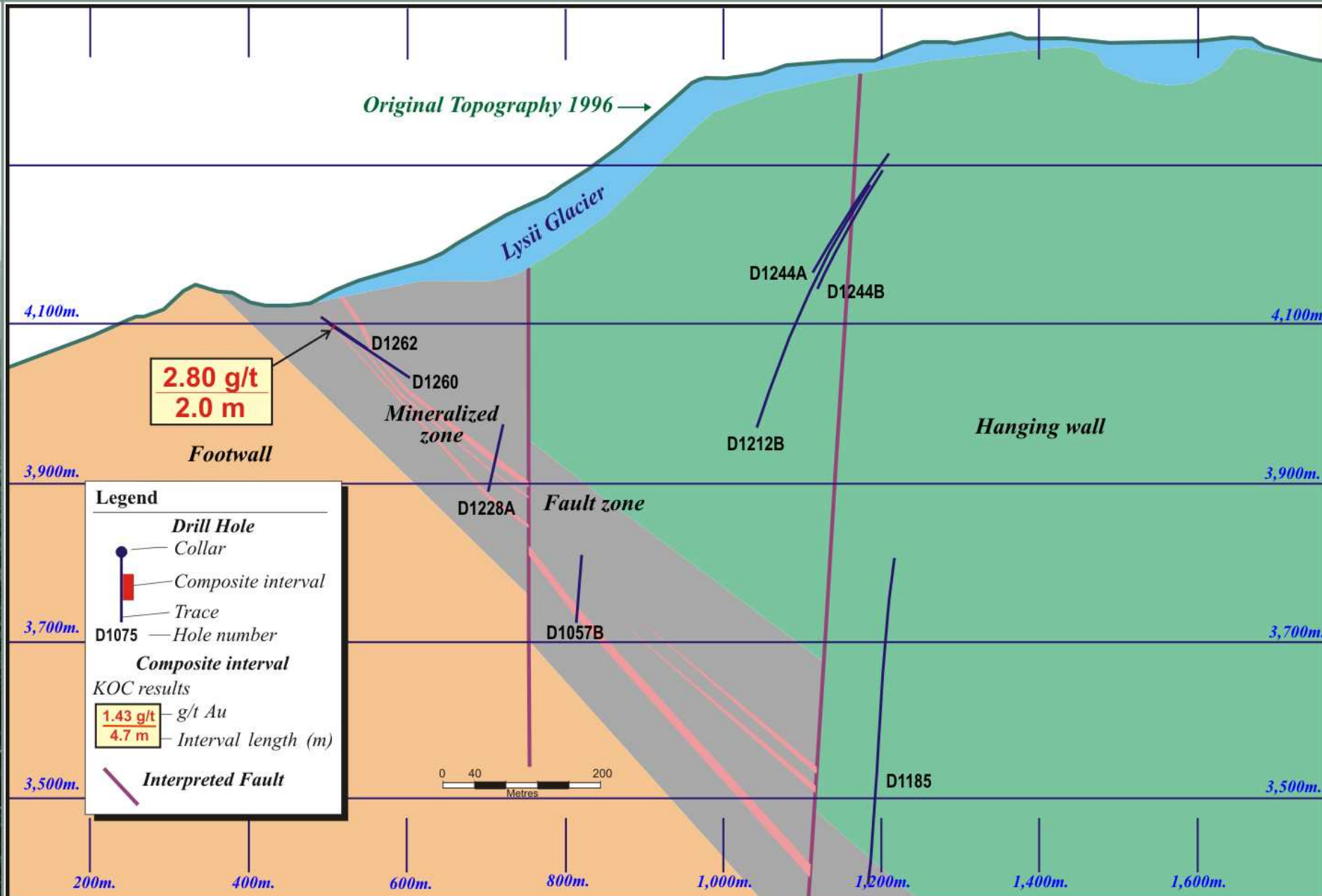
Drill Hole	Location	Drill Section	From (m)	To (m)	Core Length (m)	Au (g/t)	
D1267	Stockwork Zone	134	319.0	337.0	18.0	3.87	
			<i>includes</i>	330.0	336.0	6.0	7.23
				343.0	393.0	50.0	6.26
			<i>includes</i>	370.0	380.0	10.0	12.53
			<i>includes</i>	384.0	388.0	4.0	12.51
				418.0	429.0	11.0	1.30
D1269	Stockwork Zone	118	437.0	442.0	5.0	1.22	
				474.7	486.0	11.3	1.71
			<i>includes</i>	124.0	169.9	45.9	4.95
			<i>includes</i>	127.3	135.3	8.0	8.90
			154.4	158.4	4.0	11.26	
D1270	Saddle Zone	86	<i>Hole was stopped due to technical difficulties before target was reached</i>				
D1272	Stockwork Zone	134	<i>Hole was stopped due to technical difficulties before target was reached</i>				
D1272A	Stockwork Zone	134	293.0	300.0	7.0	1.58	
				306.1	326.9	20.8	9.16
			<i>includes</i>	310.0	314.9	4.9	29.42
D1275	Saddle Zone	106	520.9	542.5	21.6	2.99	
			<i>includes</i>	533.5	536.9	3.4	7.45
D1276	Stockwork Zone	122	345.9	364.1	18.2	5.16	
			<i>includes</i>	352.6	356.1	3.5	8.39
			<i>includes</i>	358.8	363.3	4.5	7.87
D1277	Stockwork Zone	130	<i>Hole was stopped due to technical difficulties before target was reached</i>				
D1278	Northeast Extension	234	57.7	71.8	14.1	4.76	
			<i>includes</i>	64.9	70.9	6.0	7.60
				91.4	94.5	3.1	2.98
				102.5	115.6	13.1	5.78
			<i>includes</i>	106.0	113.6	7.6	8.12
D1278A	Northeast Extension	234	48.1	56.3	8.2	5.51	
			<i>includes</i>	50.3	55.3	5.0	7.11
				69.2	80.2	11.0	3.09
D1279	Stockwork Zone	130	319.9	335.3	15.4	2.32	
D1280	Stockwork Zone	146	50.1	53.5	3.4	1.78	
				302.3	320.4	18.1	2.16
				343.5	361.1	17.6	1.29
				386.6	395.7	9.1	1.36
D1281	Stockwork Zone	138-142	<i>Hole was stopped due to technical difficulties before target was reached</i>				
D1281A	Stockwork Zone	138-142	<i>Hole was stopped due to technical difficulties before target was reached</i>				
D1283	Stockwork Zone	102-106	266.5	299.5	33.0	4.66	
			<i>includes</i>	266.5	276.0	9.5	10.73
				316.9	320.9	4.0	3.14
				345.0	350.9	5.9	1.35
D1285	Stockwork Zone	106	274.0	276.0	2.0	3.65	
				291.3	311.0	19.7	4.30
			<i>includes</i>	296.8	299.6	2.8	8.74
				321.0	338.3	17.3	1.35
				362.0	374.1	12.1	2.24
D1286	Stockwork Zone	134	413.0	420.0	7.0	1.66	
				428.8	456.0	27.2	4.50
			<i>includes</i>	437.0	441.0	4.0	15.26
				464.0	485.0	21.0	6.47
			<i>includes</i>	474.0	484.0	10.0	10.19
				504.3	508.0	3.7	1.20
				525.0	549.0	24.0	2.00
D1288	Saddle Zone	110	<i>Hole was stopped due to technical difficulties before target was reached</i>				
D1289	Stockwork Zone	146	7.7	15.1	7.4	11.13	
				243.0	274.7	31.7	5.89
			<i>includes</i>	254.8	264.0	9.2	15.67
				286.1	318.2	32.1	7.81
D1292	Stockwork Zone	106	328.4	366.9	38.5	2.63	
				379.5	383.5	4.0	1.61

Notes: Significant mineralized intervals are greater than 1.00 g/t Au  
Individual assays are top cut to 60 g/t Au prior to composite calculation  
Lower cut-off for higher grade sub-intervals is 7.0 g/t Au  
True widths for mineralized zones are about 40% to 95% of stated down hole interval  
This information should be read together with our news release of February 6th, 2009. Ian Atkinson, a Certified Professional Geologist, is Centerra's qualified person for the purpose of National Instrument 43-101

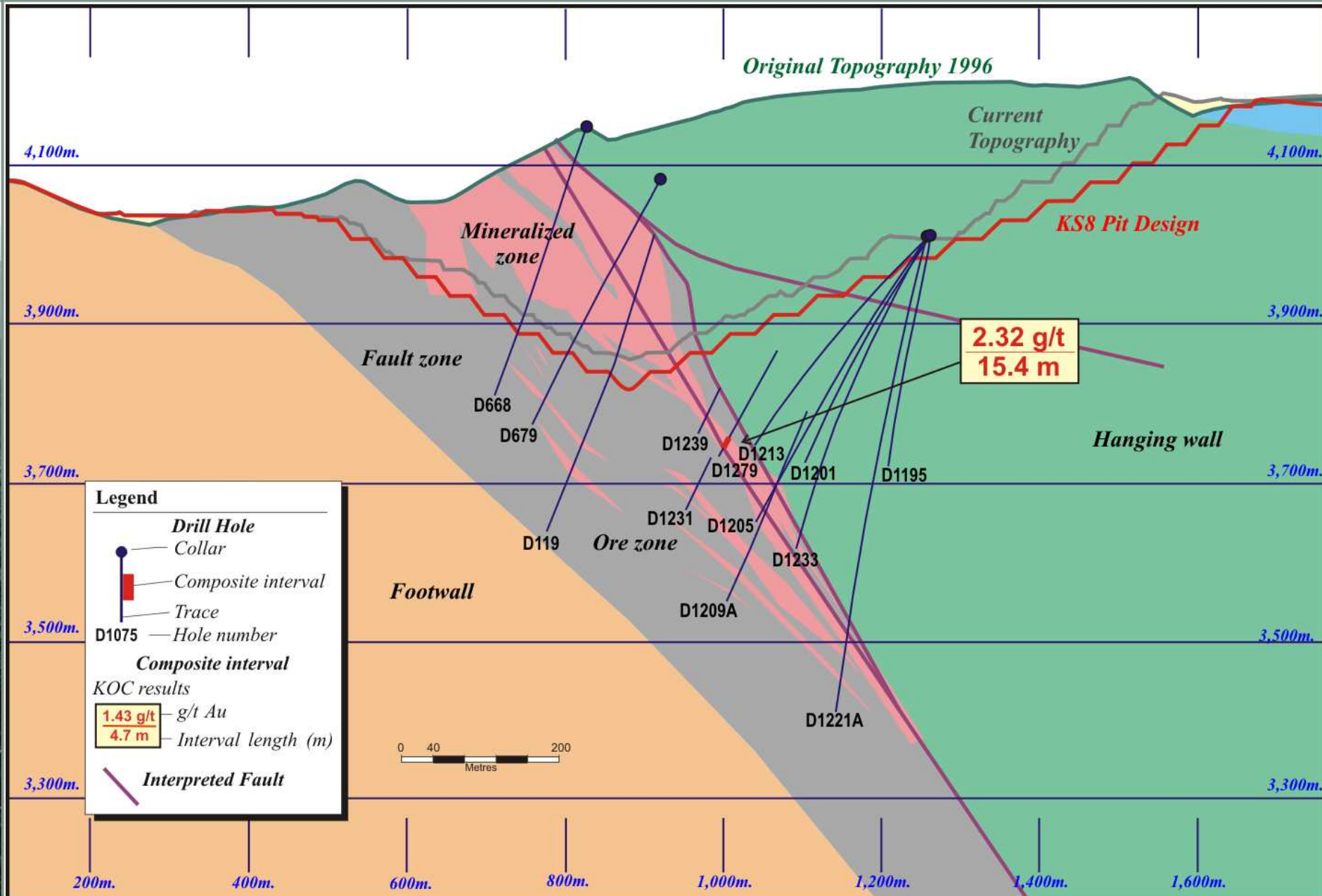
# Kumtor Q4 2008 – Section 254



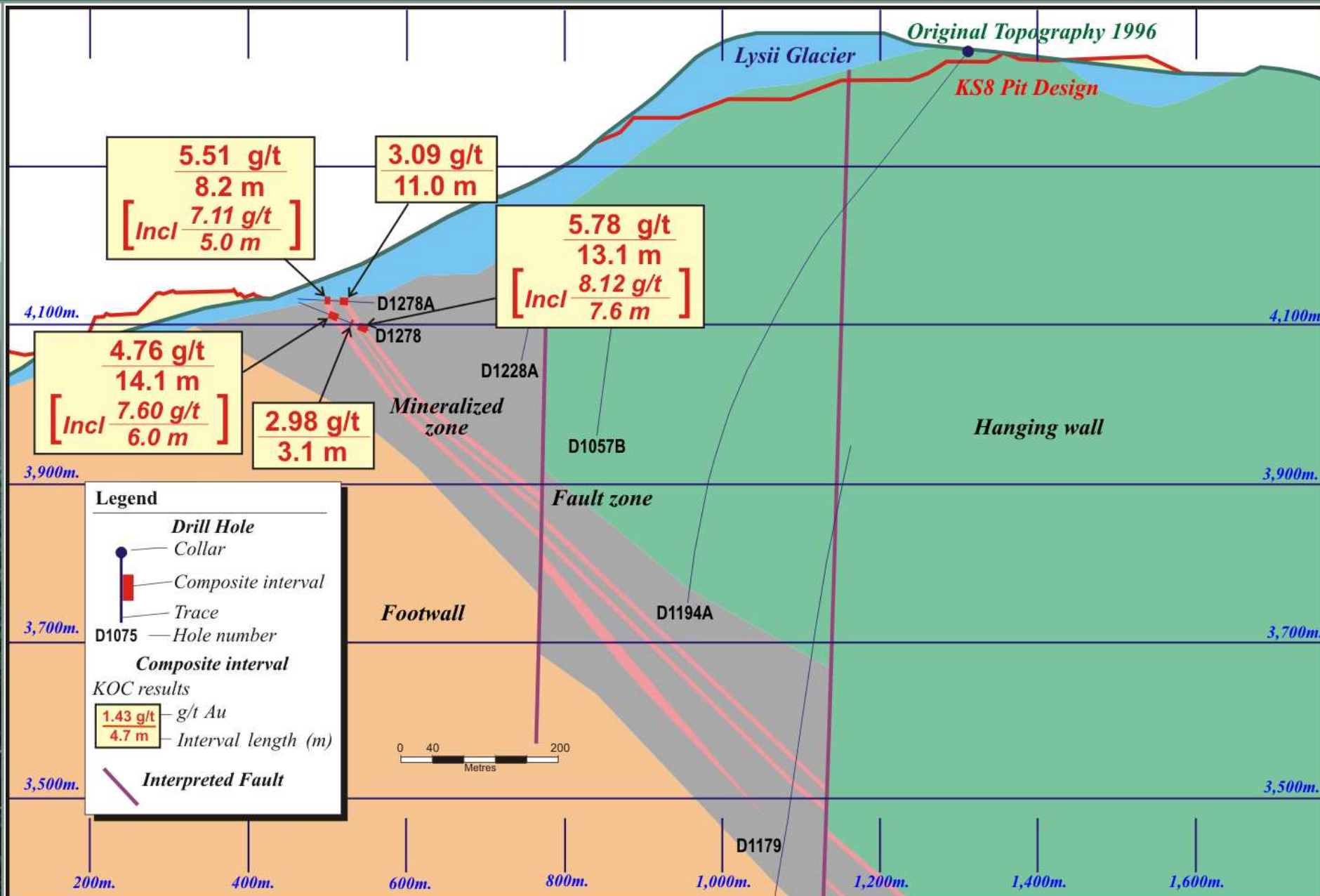
# Kumtor Q4 2008 – Section 242



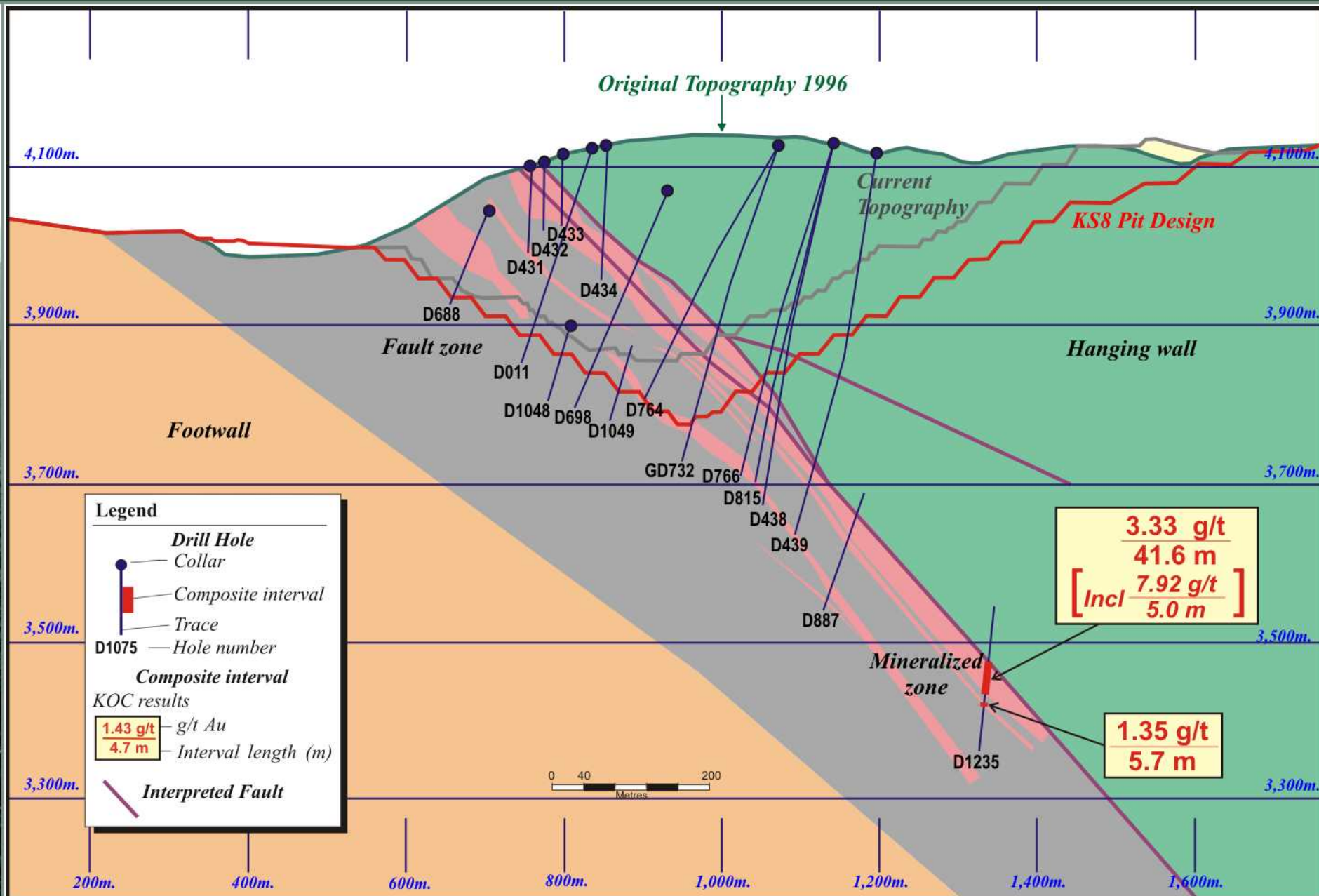
# Kumtor Q4 2008 – Section 130



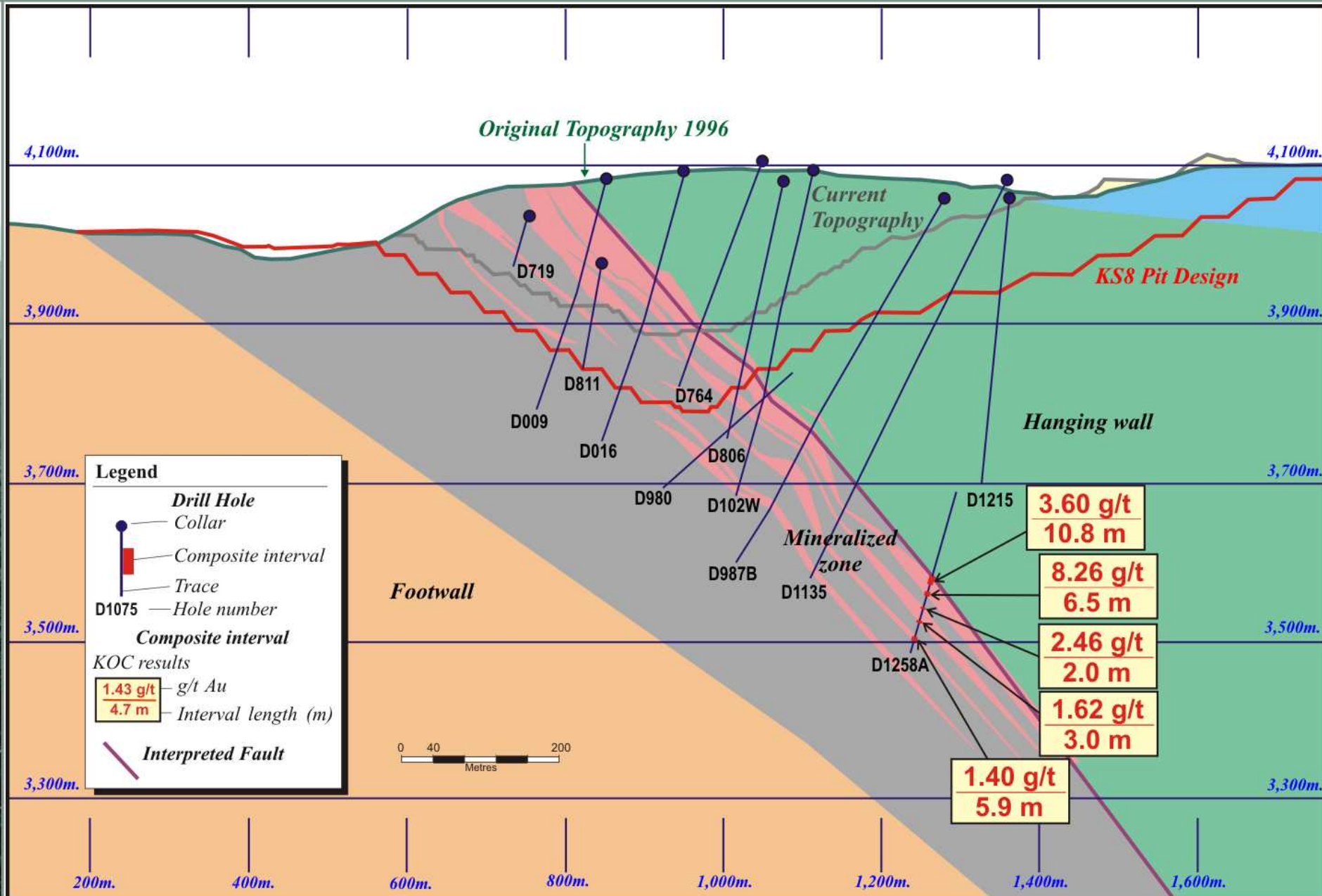
# Kumtor Q4 2008 – Section 234



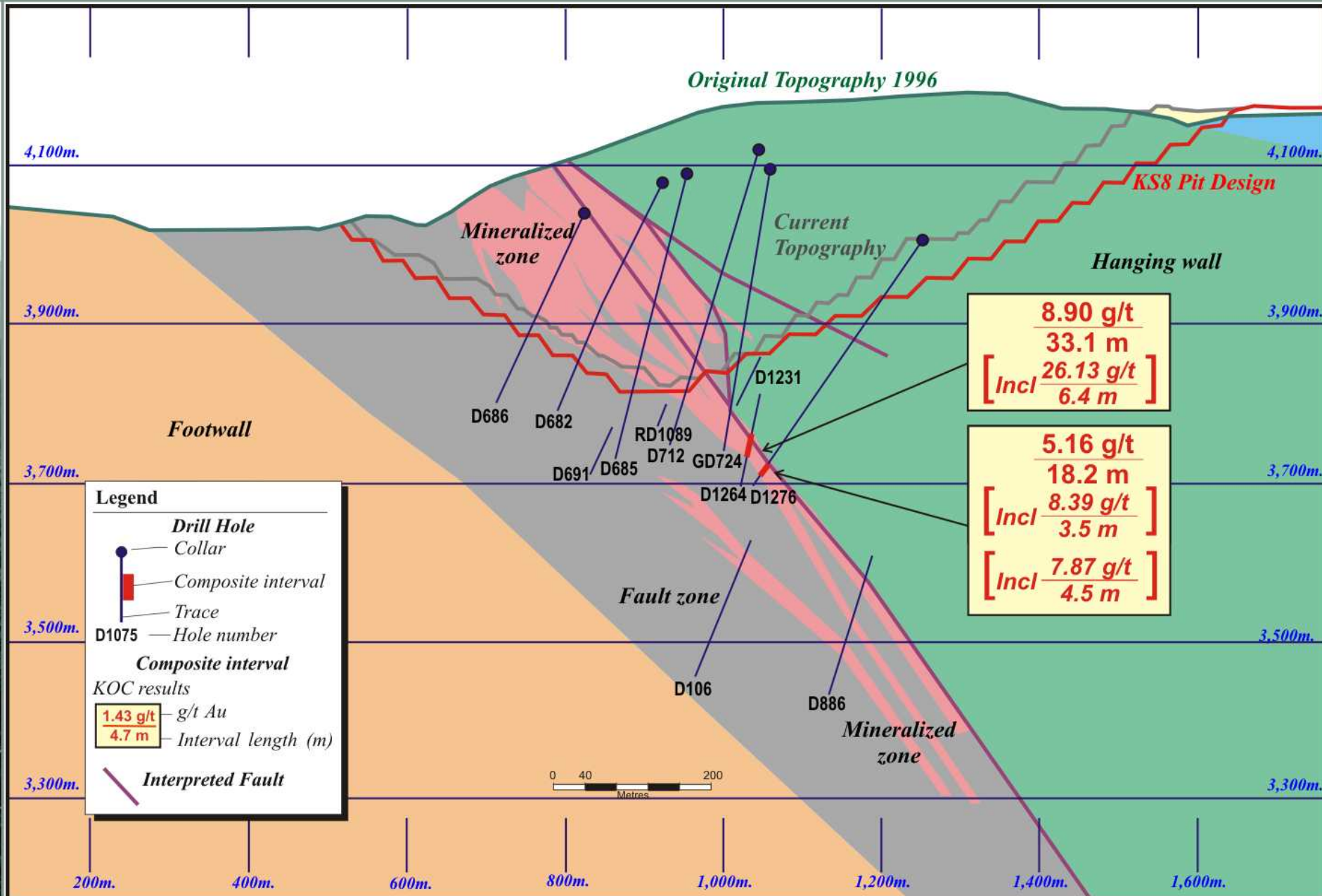
# Kumtor Q4 2008– Section 98



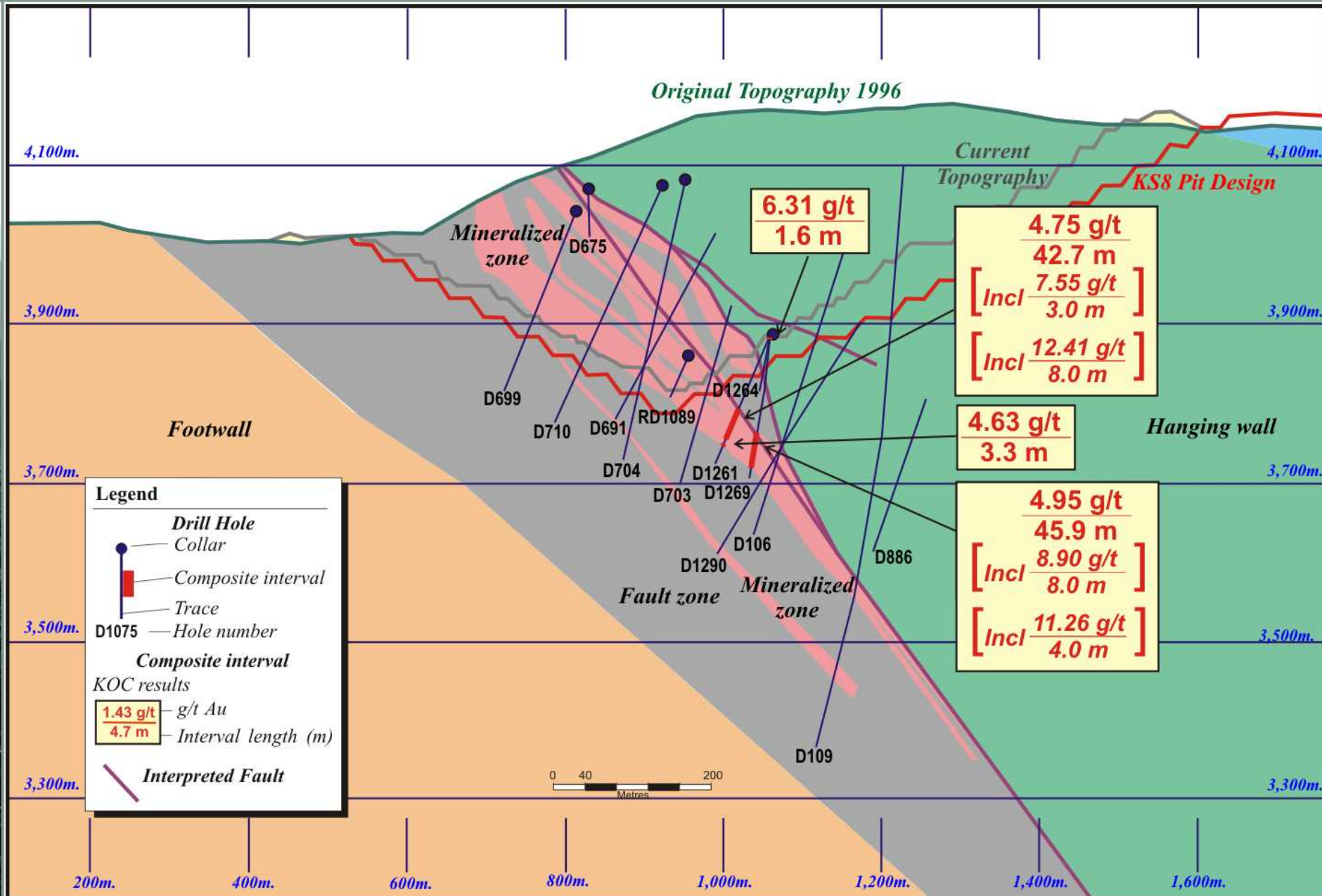
# Kumtor Q4 2008 – Section 82



# Kumtor Q4 2008 – Section 122



# Kumtor Q4 2008 – Section 118



# Kumtor Q4 2008 – Section 102

