

2,797,100 mE

2,797,300 mE

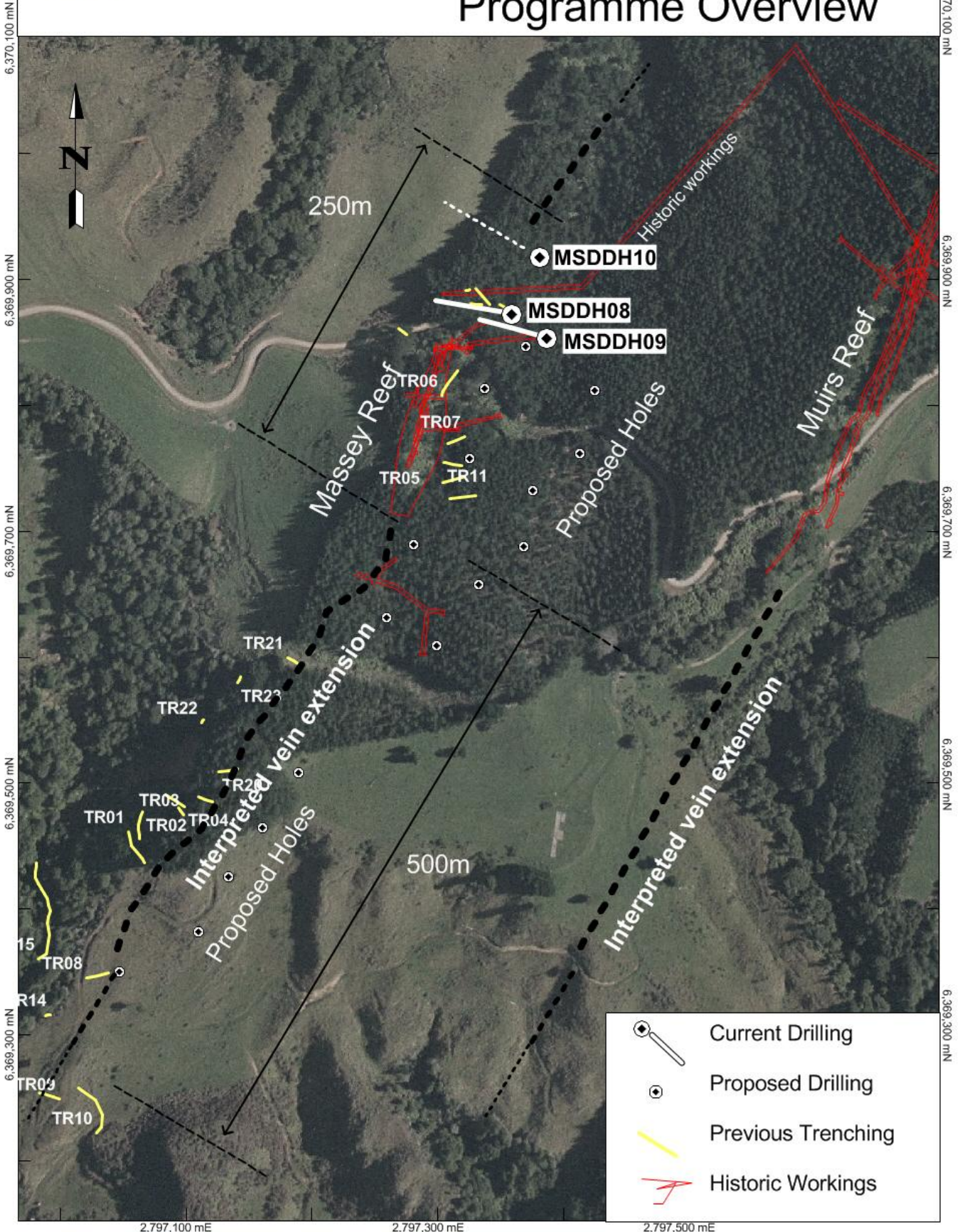
2,797,500 mE





2,797,700 mE



Glass Earth Gold LIMITED

# Muir's Prospect Massey Reef Programme Overview



-  Current Drilling
-  Proposed Drilling
-  Previous Trenching
-  Historic Workings

2,797,100 mE

2,797,300 mE

2,797,500 mE

6,370,100 mN

6,369,900 mN

6,369,700 mN

6,369,500 mN

6,369,300 mN

6,370,100 mN

6,369,900 mN

6,369,700 mN

6,369,500 mN

6,369,300 mN