

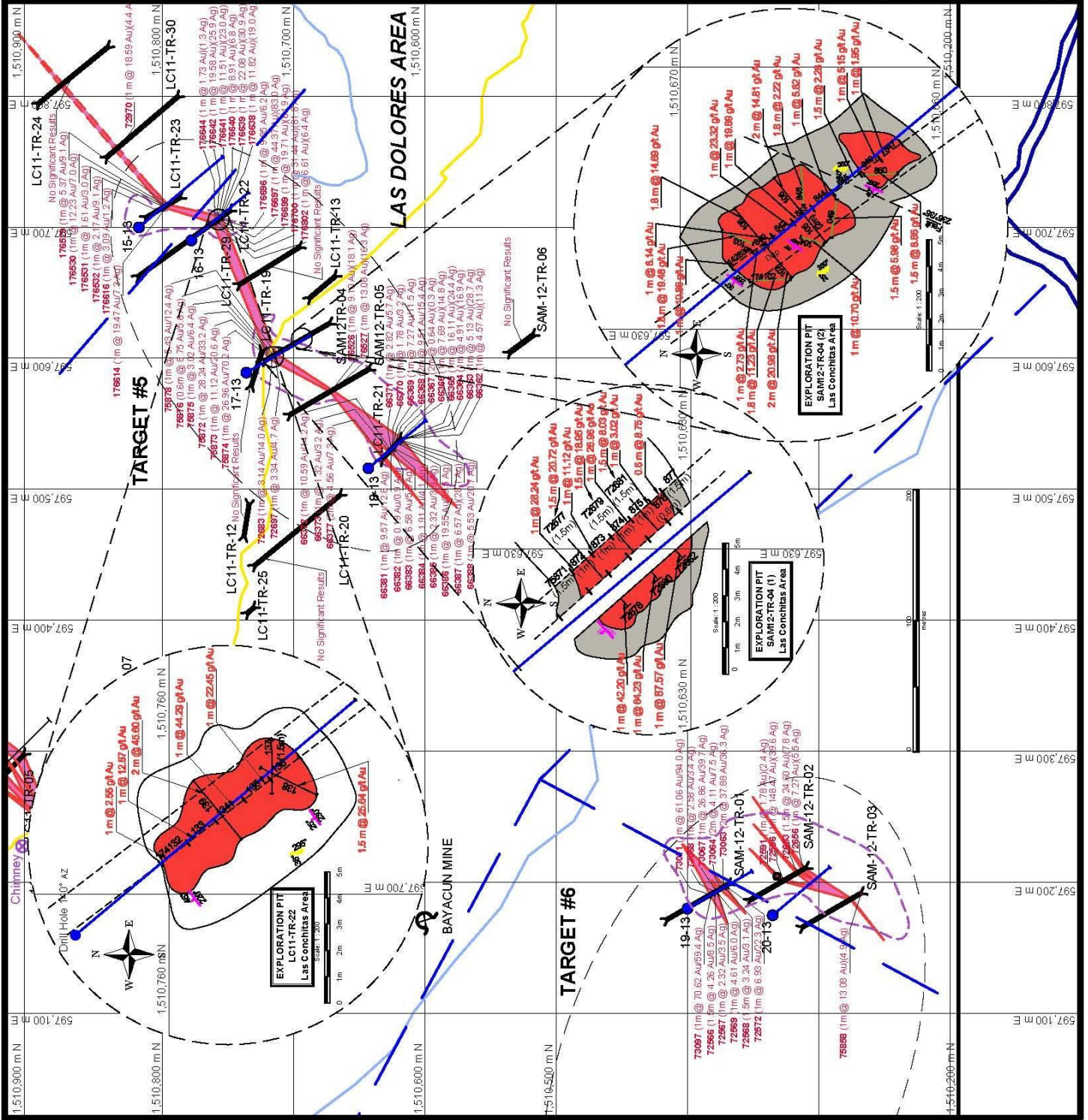
LEGEND

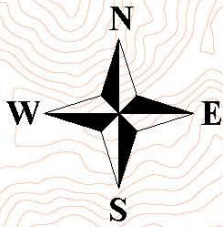
- Defined Vein
- Assumed Vein
- Open Pit (Old Workings)
- Trench And Number With Intersection
- Roads
- Creek
- River
- Possible drill hole
- Faults
- Strike of Vein
- Samples and intervals in the floor of the trench
- Samples in the direction of the veins (True Width) Perpendicular Sample
- Assays Results
- Graphitic Schist
- Quartz Veins
- Lateritic Soil
- Strike and dip of foliation
- Strike and dip of Quartz vein
- Trench

Golden Reign Resources Ltd.

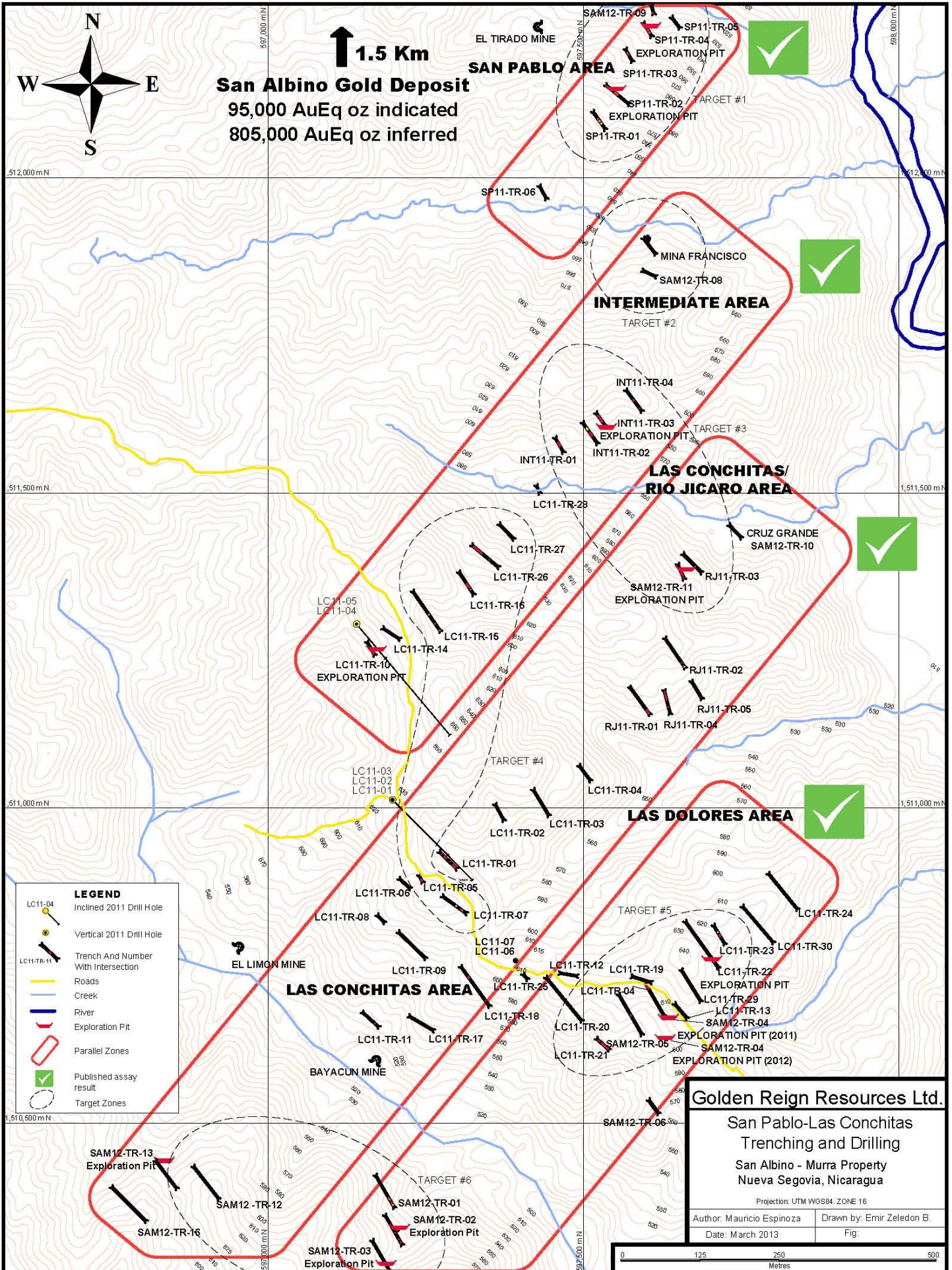
2011 - 2012 Trenching Program
 Las Dolores Area
 San Albino - Murra Property
 Nueva Segovia, Nicaragua
 Southern District

Projection: UTM WGS84, ZONE 16
 Author: M. Espinoza R. Drawn by: Emir Zeledon
 Date: February 2013 Fig.





↑ 1.5 Km
San Albino Gold Deposit
95,000 AuEq oz indicated
805,000 AuEq oz inferred



Golden Reign Resources Ltd.

San Pablo-Las Conchitas
Trenching and Drilling
San Albino - Murra Property
Nueva Segovia, Nicaragua

Projection: UTM WGS84, ZONE 16
Author: Mauricio Espinoza | Drawn by: Emir Zeledon B.
Date: March 2013 | Fig:

