



la mancha

2001, rue University, bureau 400  
Montréal (Québec) Canada H3A 2A6  
T 514.987.5115 F 514.987.5119  
lamancha.ca

Figure 1

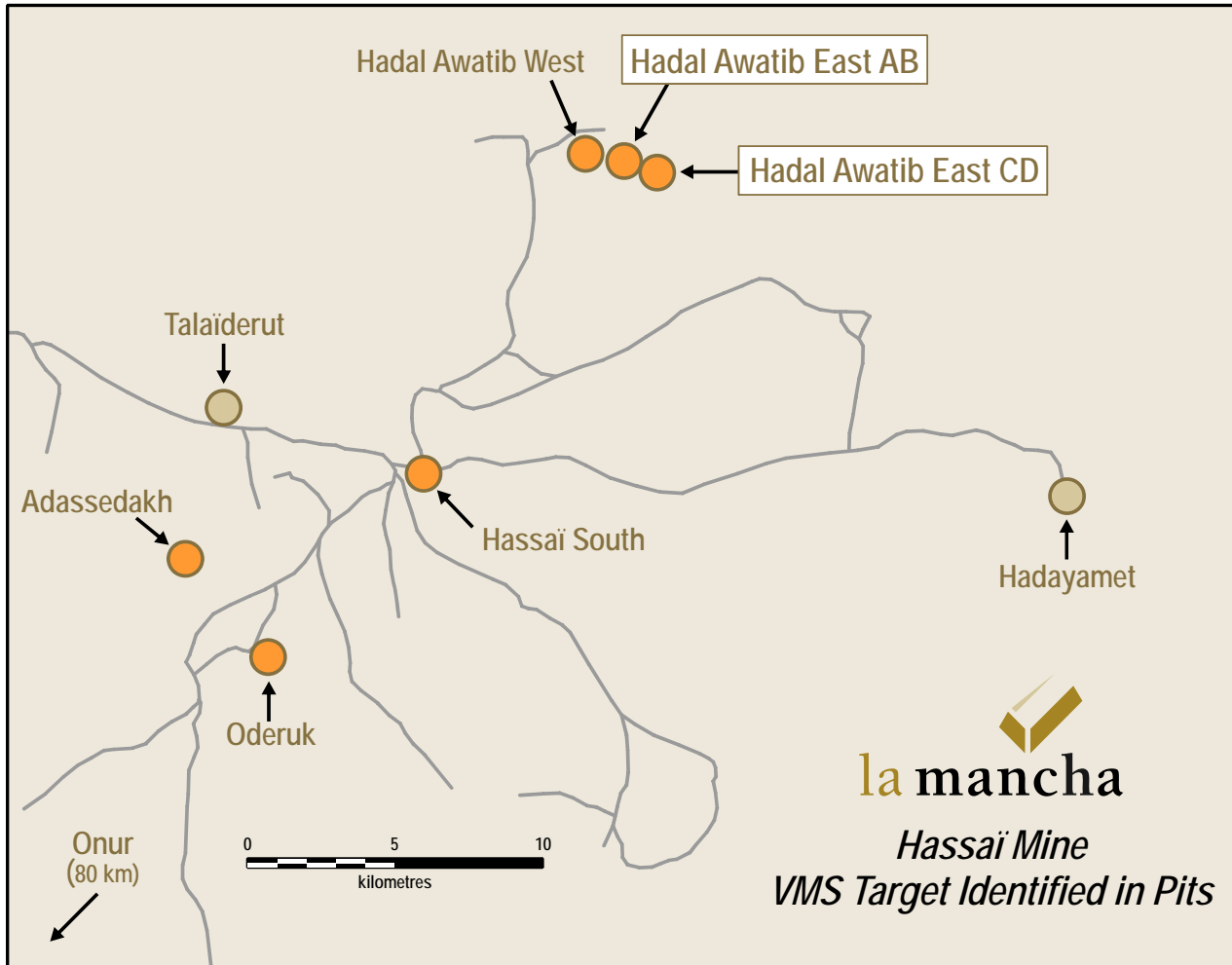


Figure 2 Hadal Awatib Cross-Section - Drill hole D 252

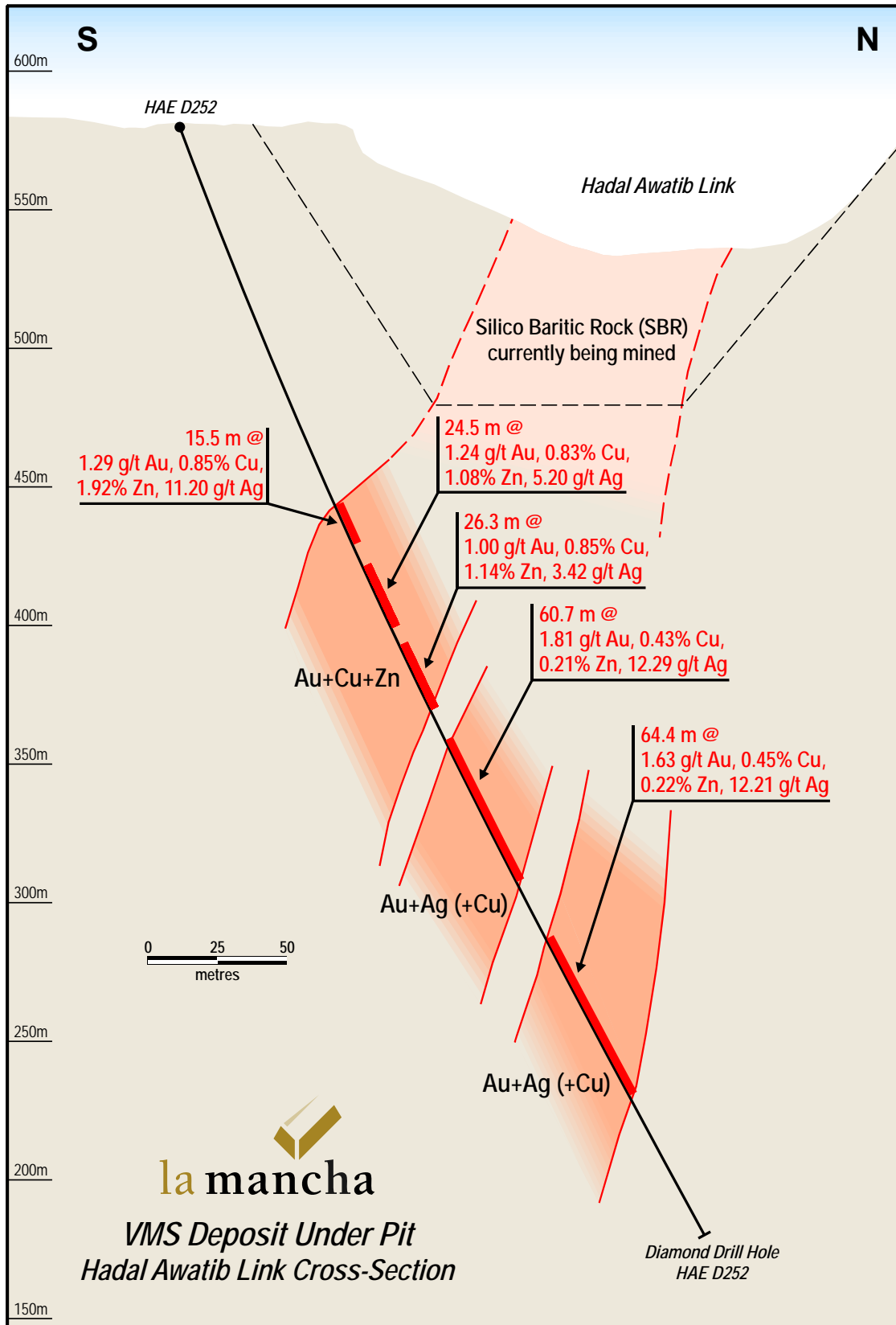
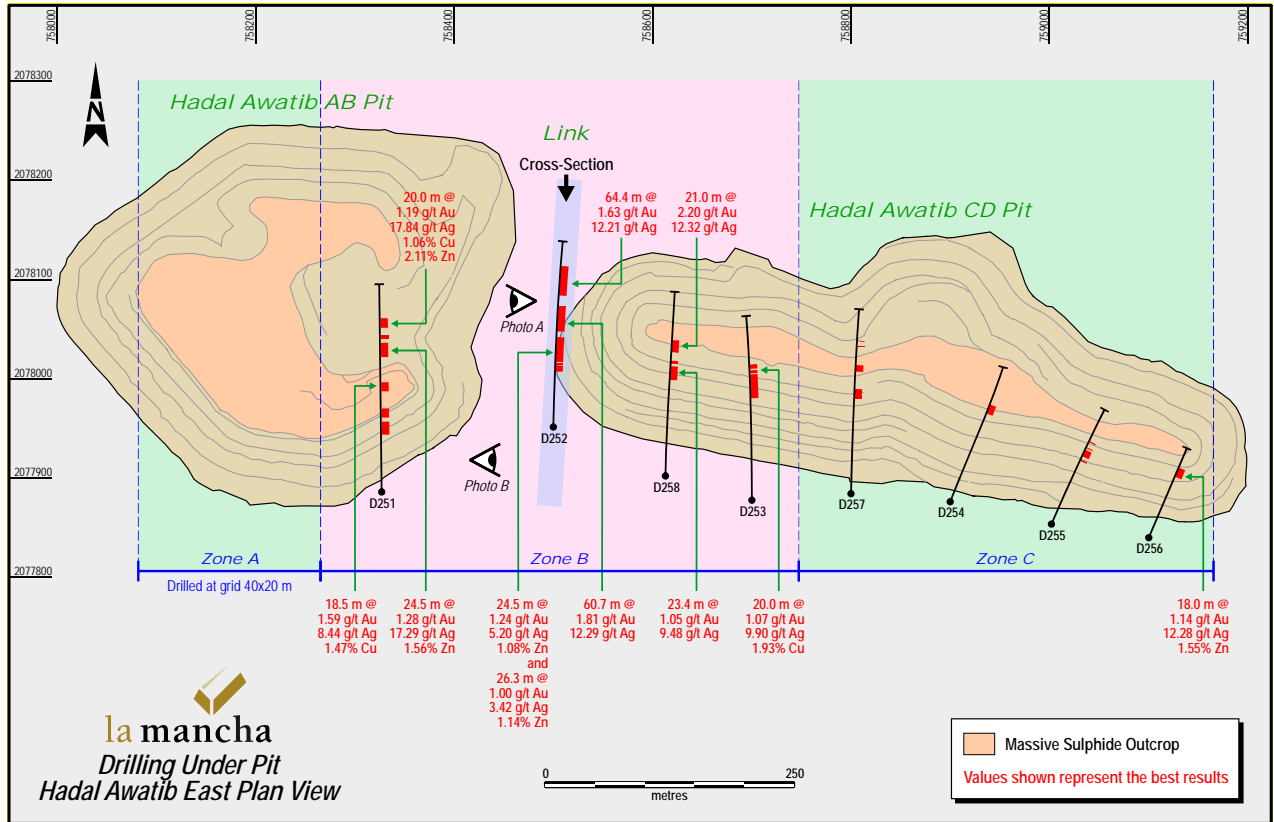
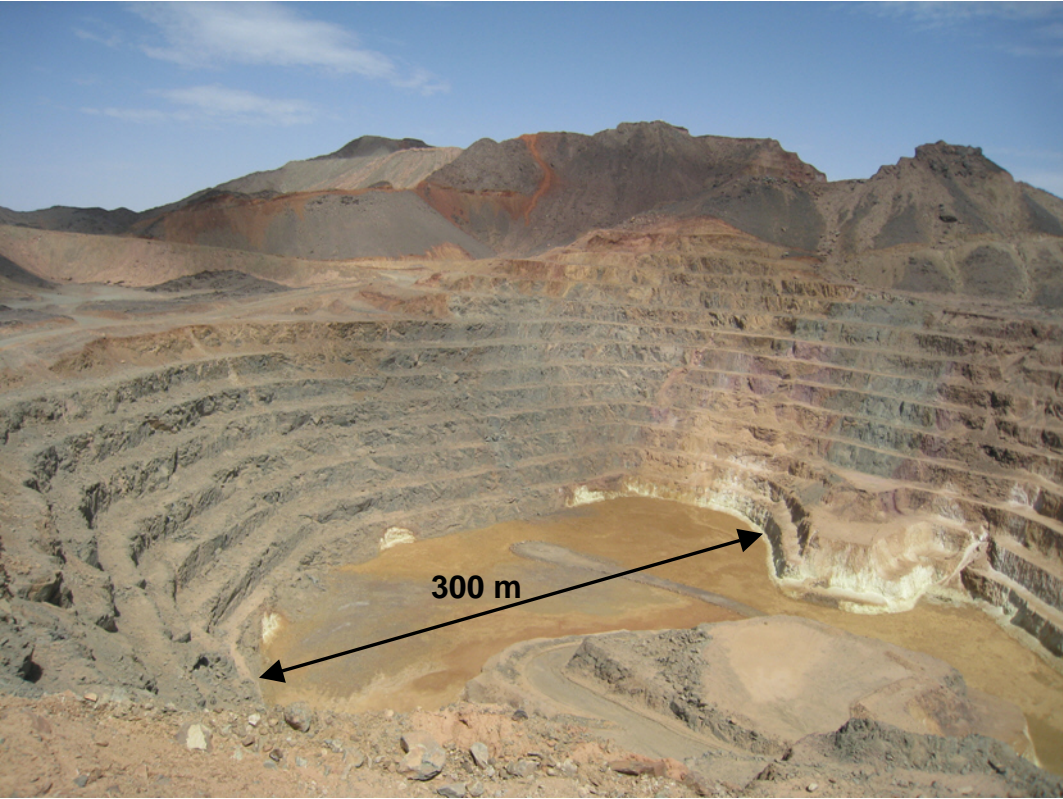


Figure 3



\* limitation between the three zones are indicatives

**Picture A: Hadal Awatib Pit AB**



**Picture B: Hadal Awatib Pit CD**

