

Fig. 1: Location of the Mjembe target (Target 7) (Orange) in relation to the Magambazi East target (Blue), Kwandege Project (Purple), Target 5 (Red) and Target 6 (Green) on Handeni's 4 prospecting licenses.

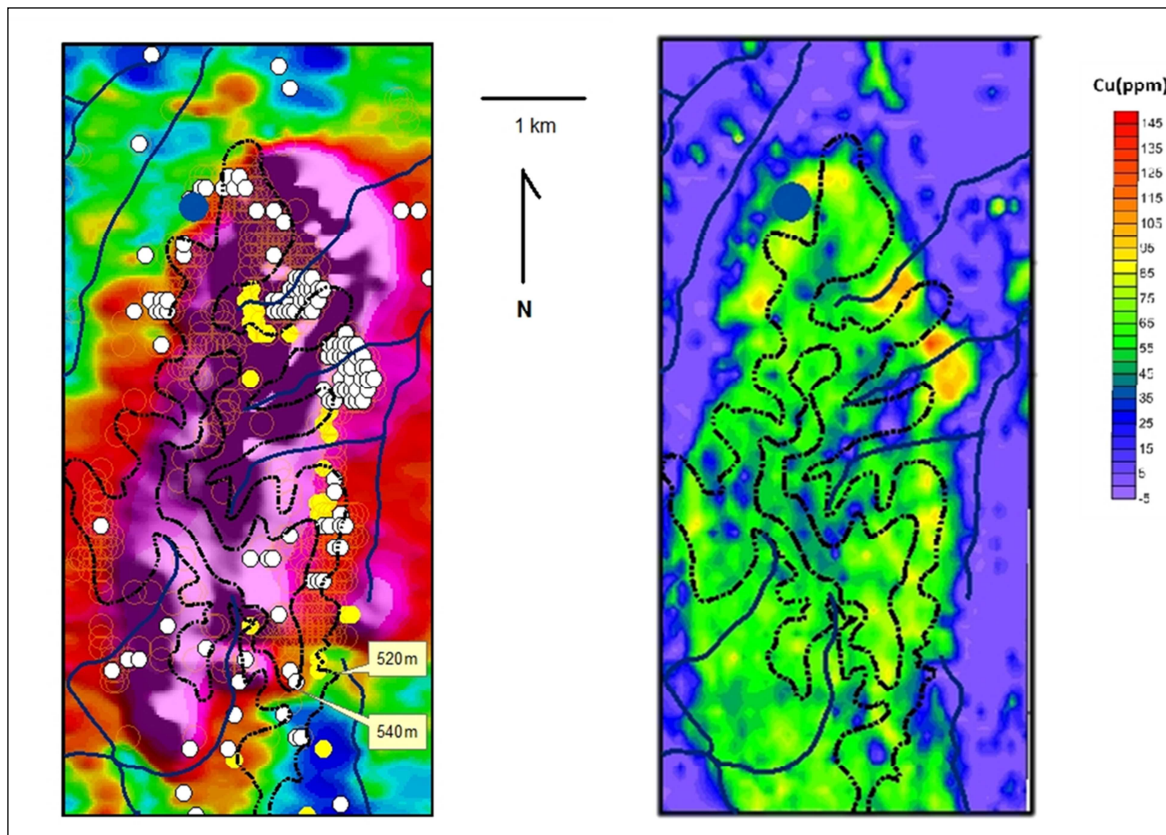


Fig. 2: Geochemical data superimposed on geophysical data for the Mjembe anomaly. Background purple represents an intensive EM anomaly potentially caused by graphite/and or massive sulphides. The Mjembe artisanal workings are indicated as a blue dot (primary rock mining), As anomalies as yellow dots, Cu as white dots and Co as orange open circles (left hand diagram). River systems are blue lines and elevation contours (above mean sea level) are in black. The close association between Cu anomalies in soil and the EM data is illustrated in the right hand diagram.