

Figure 1. Aerial view of Roughrider Uranium Deposit. Outline of West and East Zones are from recent NI43-101 report (Keller et al. 2011).

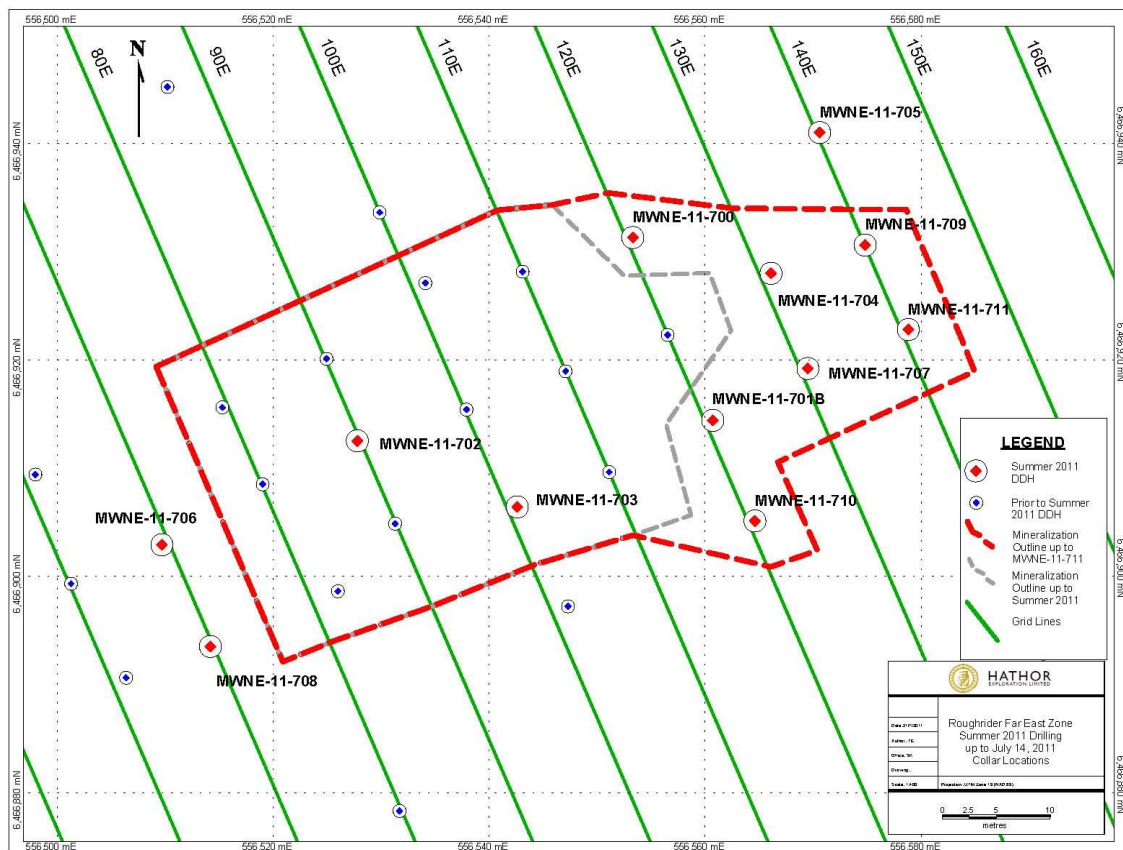


Figure 2. Grid line plan map of Far East Zone at Roughrider Uranium Deposit, with drill holes completed to date during 2011 winter and summer drill programs.

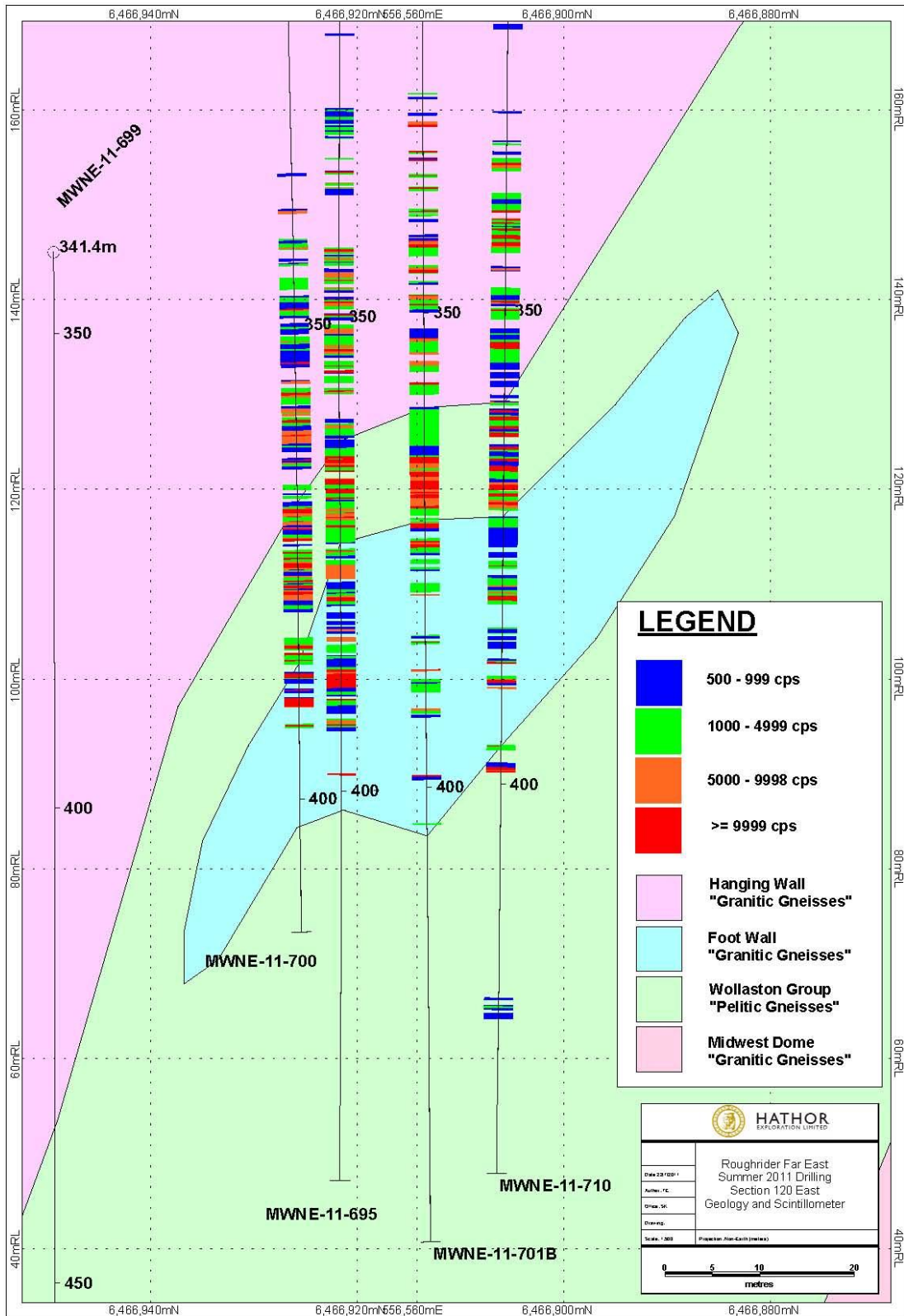


Figure 3. Cross section, Far East Zone at Roughrider, Grid Line 120 East, view northeast.

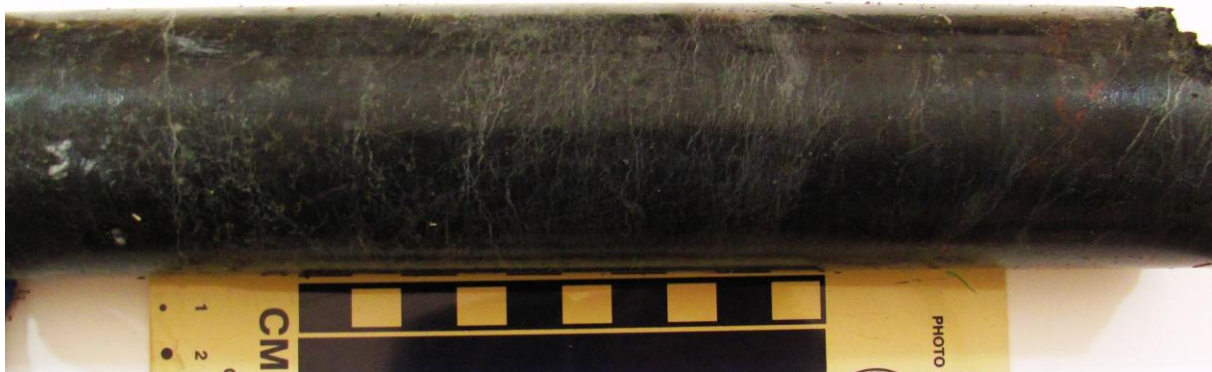
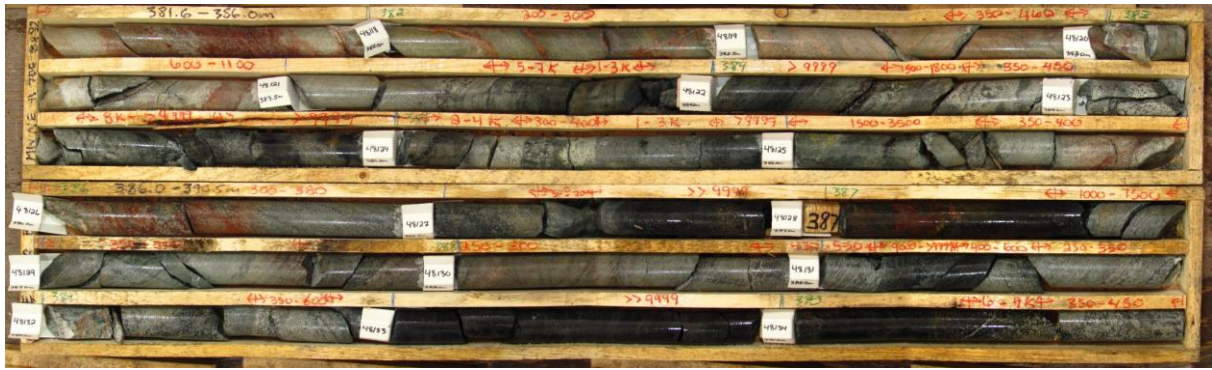


Figure 4. Massive pitchblende mineralization at Far East, in drill hole MWNE-11-700. Late stage veinlet networks are evident in central part of lower photo.



Figure 5. Upper Photo: hematite-pitchblende-illite mosaic in drill hole MWNE-11-707  
Middle Photo: hematite-pitchblende mesh in drill hole MWNE-11-701B.  
Lower Photo: illite-pitchblende stockwork in drill hole MWNE-11-704.

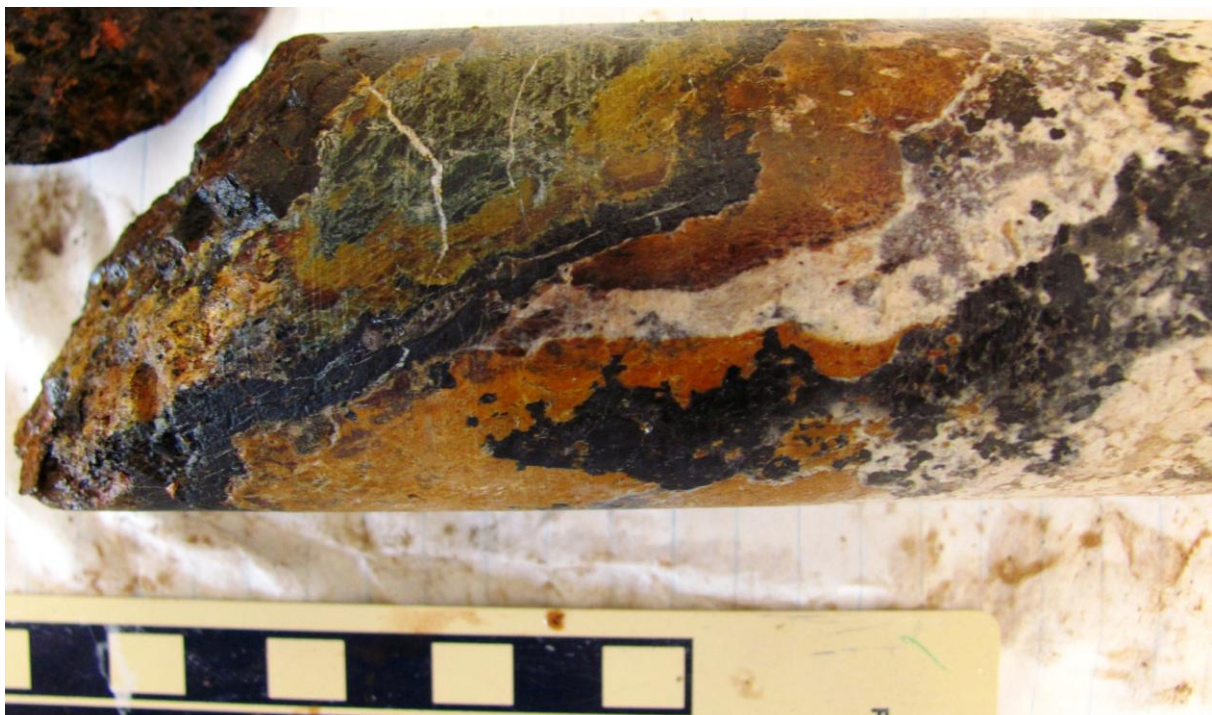


Figure 6. Structural fabrics in vein and replacement mineralization at Far East. Late stage veinlets crosscut and disrupt pitchblende-hematite stockworks. Drill hole MWNE-11-704.



Figure 7. Alteration at Far East. Upper photo: extensive hematite alteration in drill hole MWNE-11-704. Lower photo: hematite and complex clay (chlorite and illite) alteration in drill hole MWNE-11-701B.