

Figure 1: Sela Creek licence area, soil sample locations and artisanal workings (yellow).

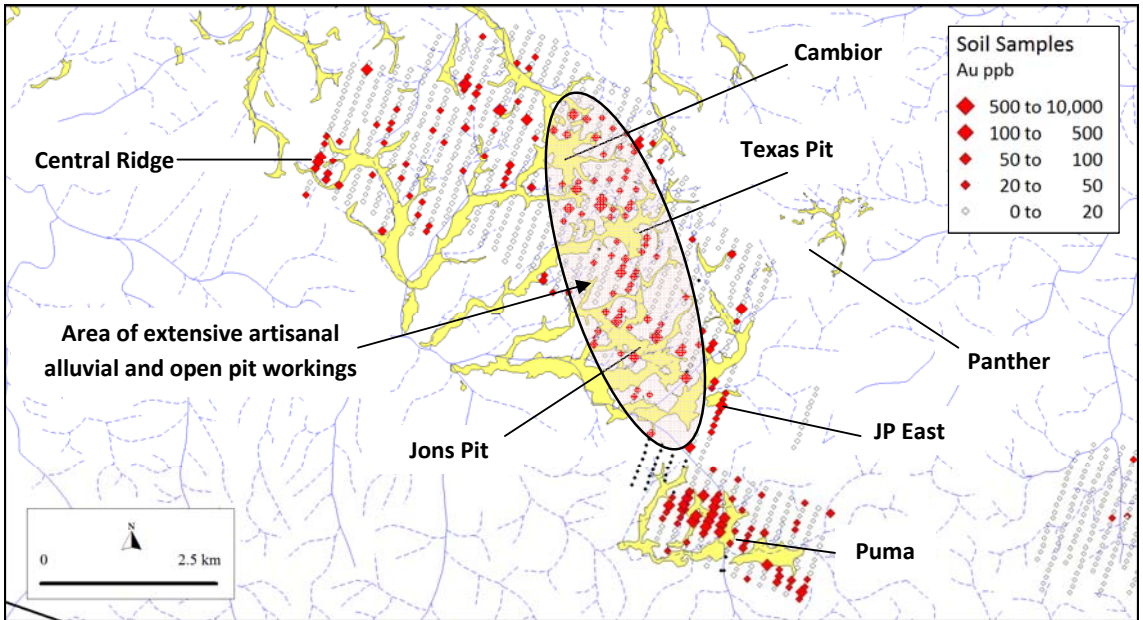


Figure 2: Gold in soil results, Sela Creek. Note the Central Ridge anomaly is open along strike. Artisanal workings and tailings (yellow) cover a large part of the Jons Pit-Texas-Cambior trend. The result is removal or covering of top soil hence no soil sampling was possible in a large part of this trend, producing a diffuse and spotty gold in soil anomaly along the trend.

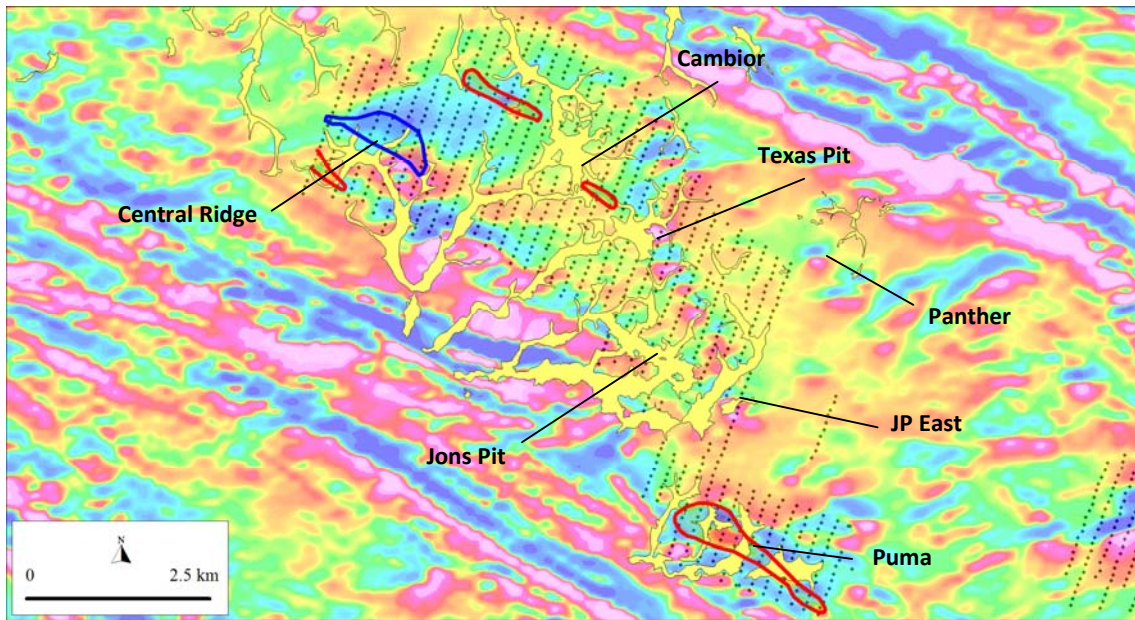


Figure 3: Gold (red) and arsenic (blue) in soil anomalies with airborne magnetic data (Calculated Vertical Derivative).