

Figure 1: Sela Creek licence area and sample locations. Yellow triangles represent a sample which assayed greater than 1 g/t gold, black triangles represent a sample which assayed less than 1 g/t gold. Alluvial workings are shown as yellow drainages.

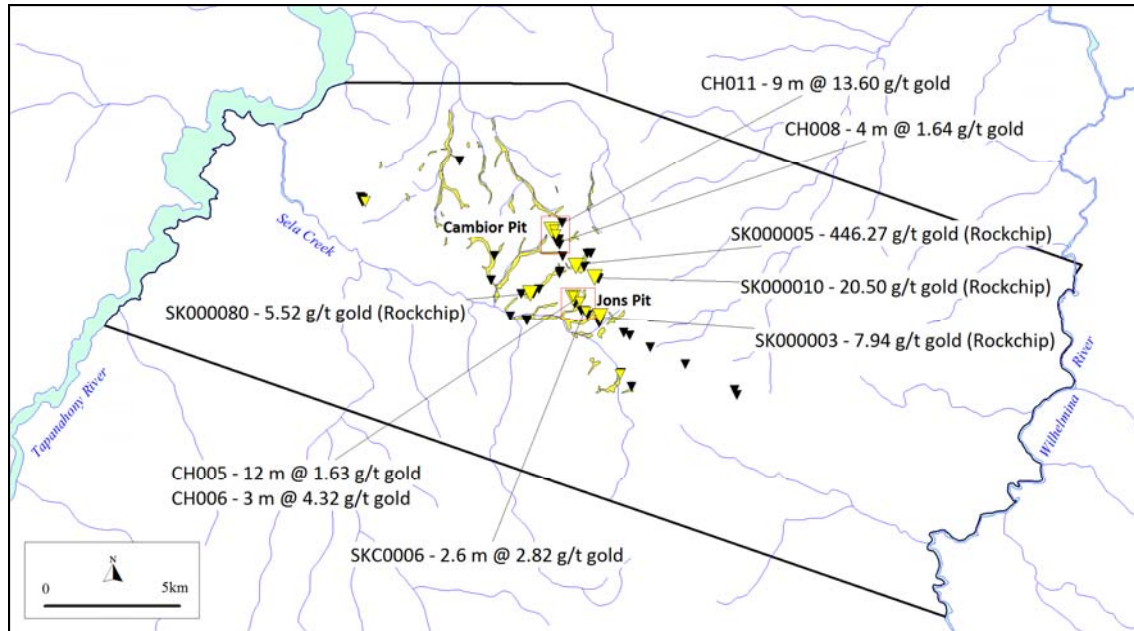


Figure 2: Cambior Pit with rockchip sample locations (triangles) and select channel sample results. Artisanal pits are outlined (grey). Yellow triangles represent rockchip samples which assayed greater than 1 g/t gold. Black triangles represent a sample which assayed less than 1 g/t gold.



Figure 3: Jons Pit and select channel sample intercepts. Artisanal pits are outlined (grey). A third pit which lies southeast along strike (not shown) yielded a rockchip result of 7.94 g/t gold giving a total strike length of 1.3 kilometres.

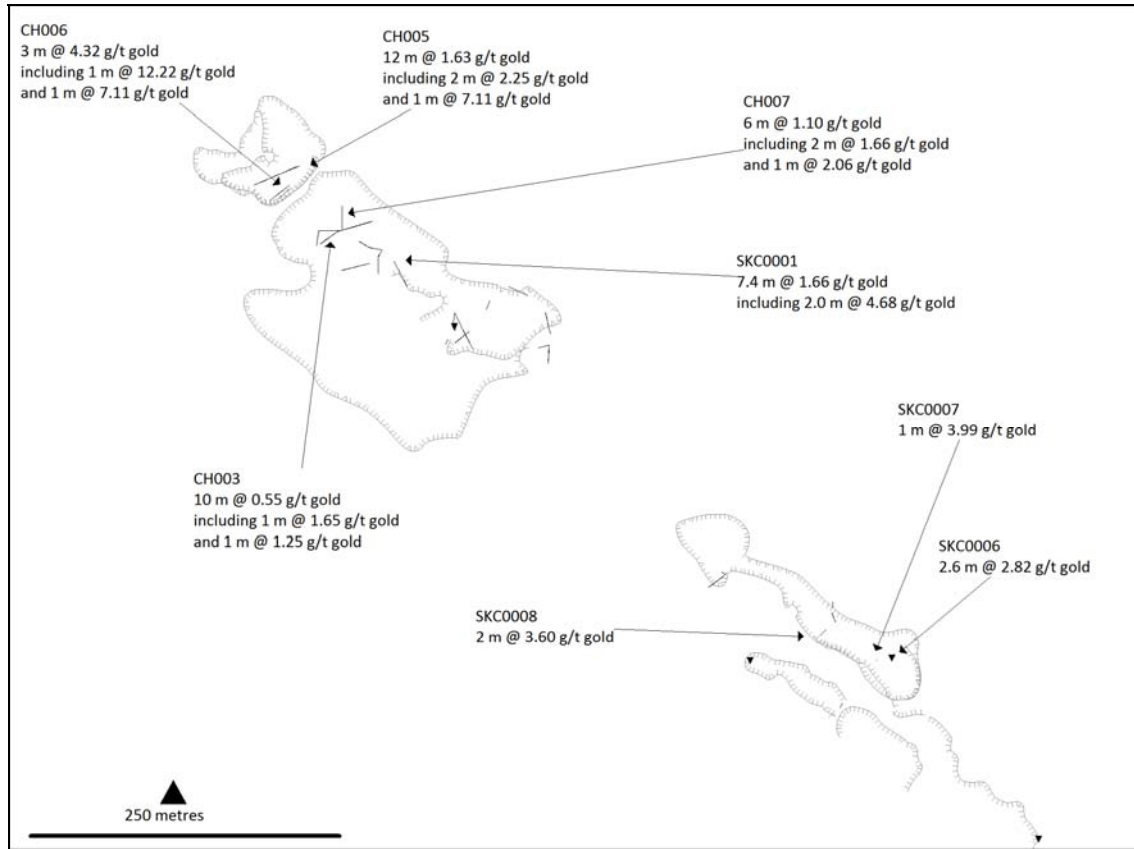


Figure 4: Google Earth satellite image of Sela Creek showing licence outline and over 40 square kilometres of alluvial workings visible as light brown drainages.

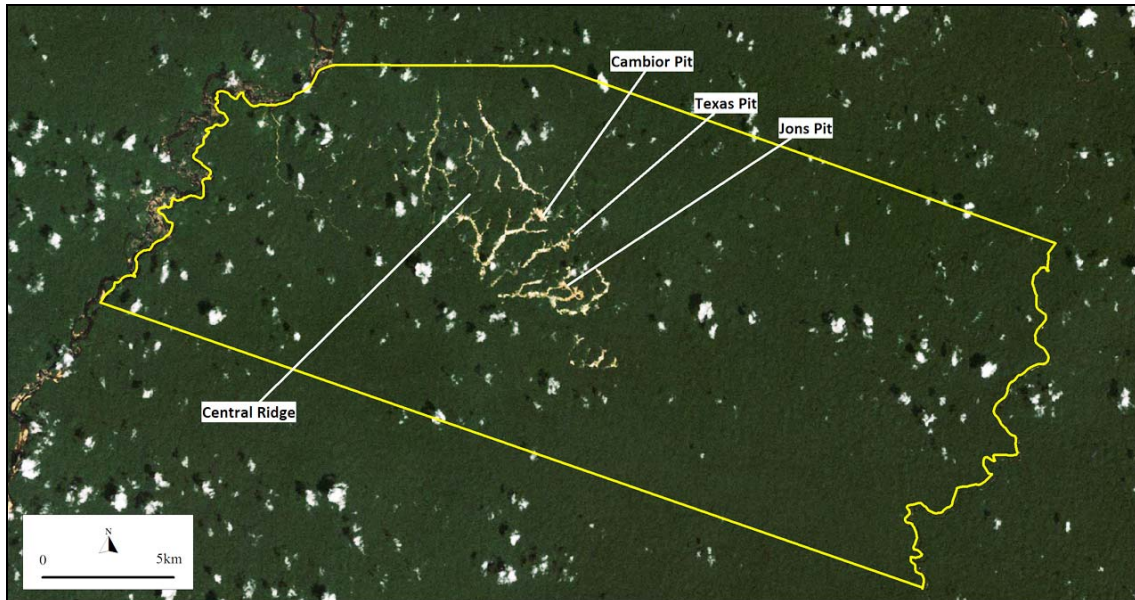


Figure 5: Photograph at Jons Pit prospect showing artisanal miners hydraulically excavating limonitic saprolite which represents the upper supergene altered part of a shear zone. Gold is recovered using simple sluice boxes.

