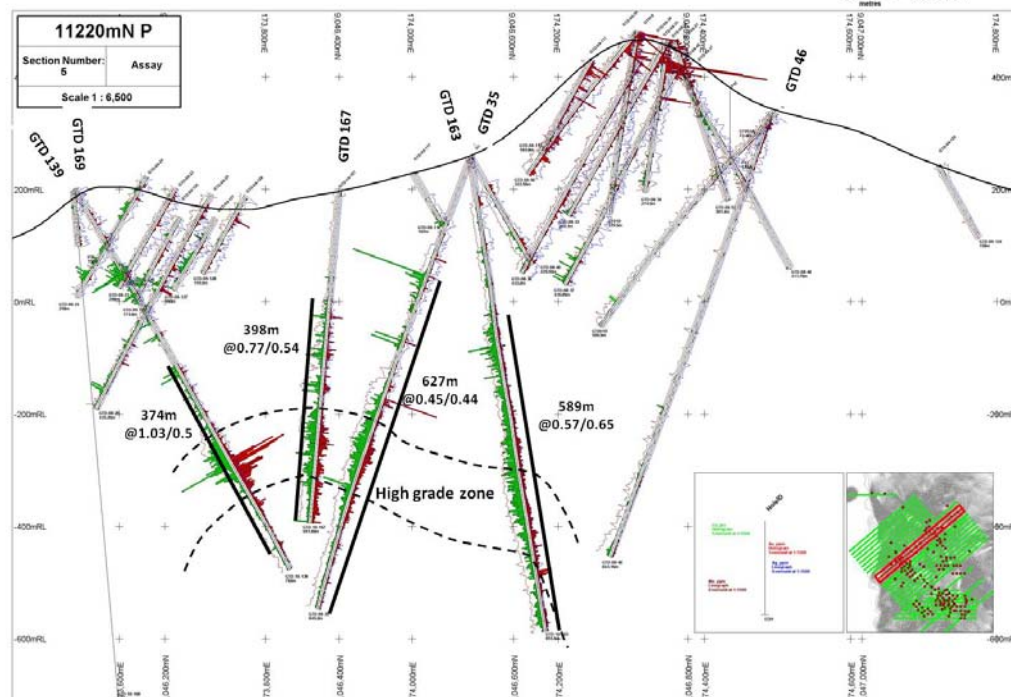
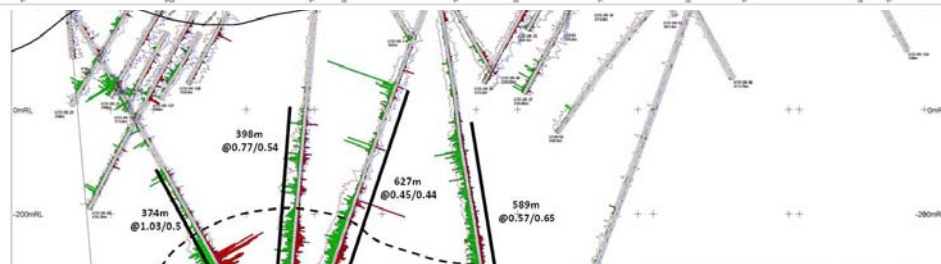
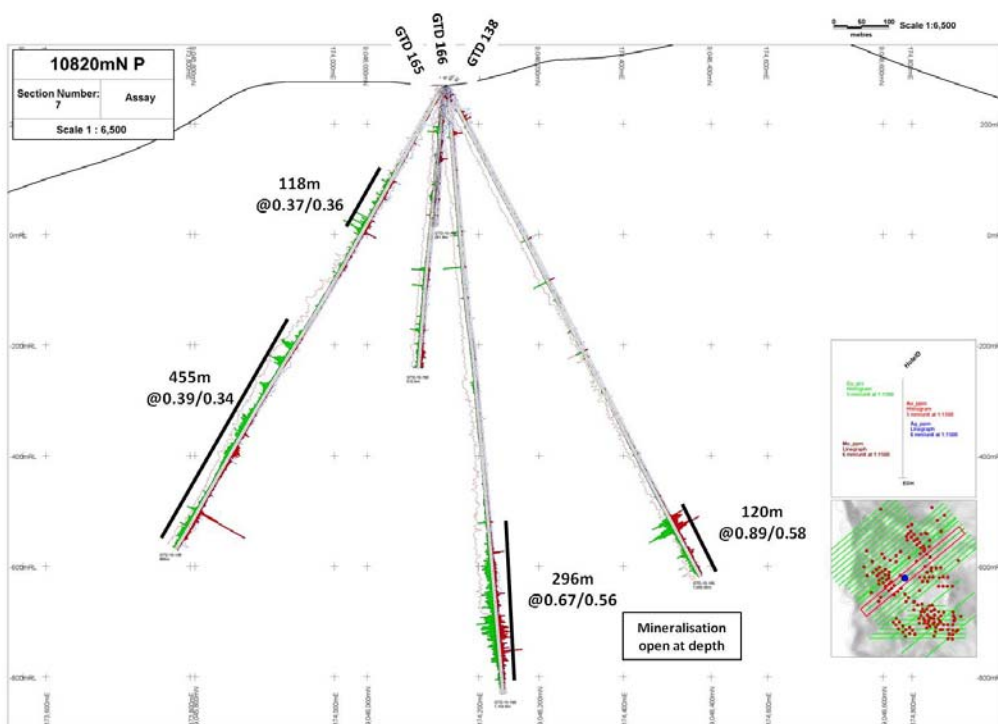


**Drill status plan:** Collars of oxide holes shown in white and blue. Deep drill traces shown in black, and proposed in blue. Those holes that have been completed are shown in yellow bars, and those in progress shown in green bars.



**Cross Section** through central part of currently known porphyry system showing hole GTD-167 relative to holes 139, 35, and 163.

The high grade zone includes intercepts in hole GTD 139 of 106m @ 2.78g/tAu & 1.24%Cu, including 30m @ 6.25g/tAu & 1.86%Cu; hole GTD-35 of 108m @ 0.95g/tAu & 0.9%Cu, and hole GTD-163 of 150m @ 0.73g/tAu & 1.0%Cu.

Intercept boxes are meters @ Au grade g/t/Cu grade %. Down hole green bars are Cu grade, red are Au grade.