

Figure 1: Location of the Starra Line Prospect

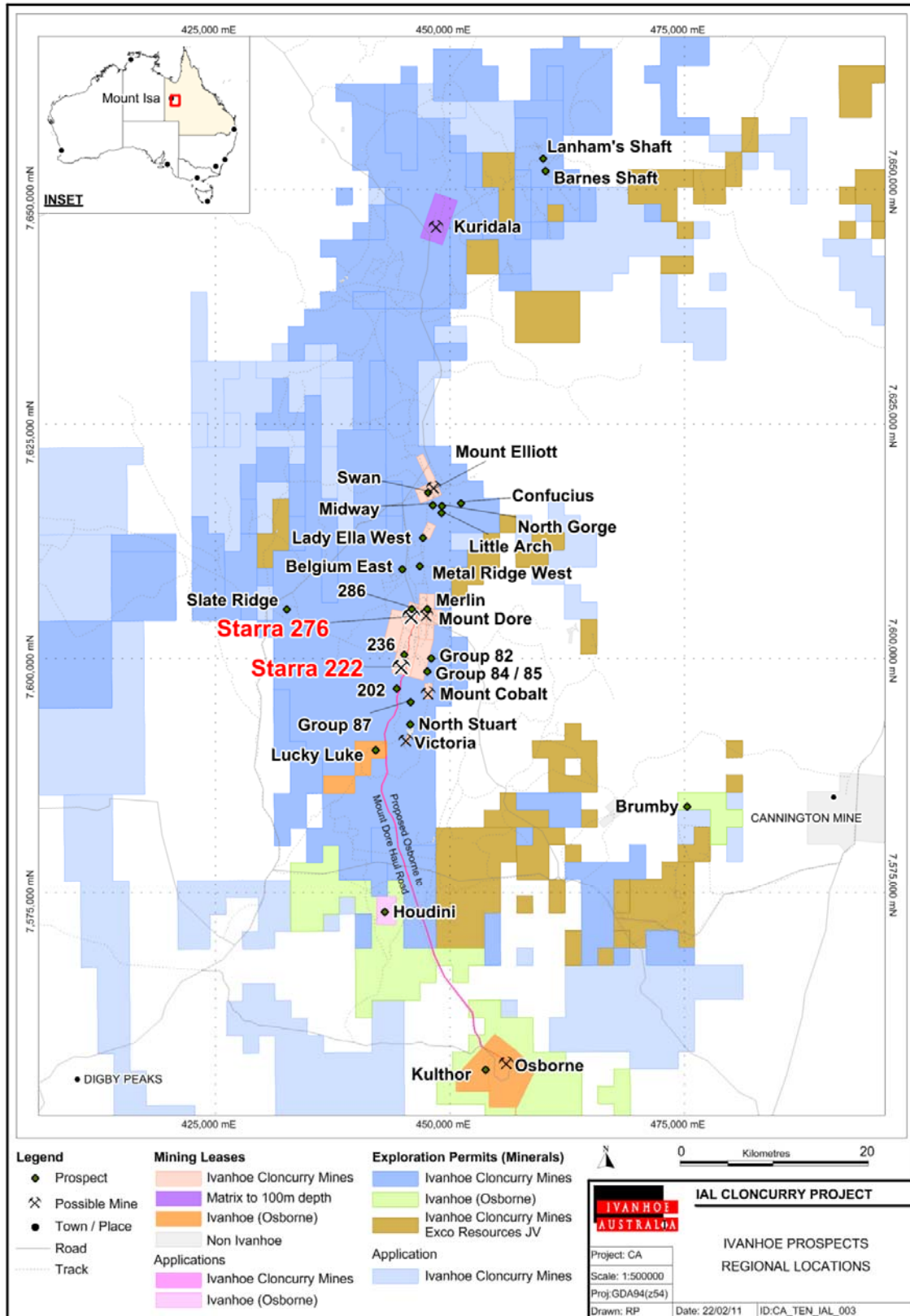


Figure 2: Starra 222 Cross Section

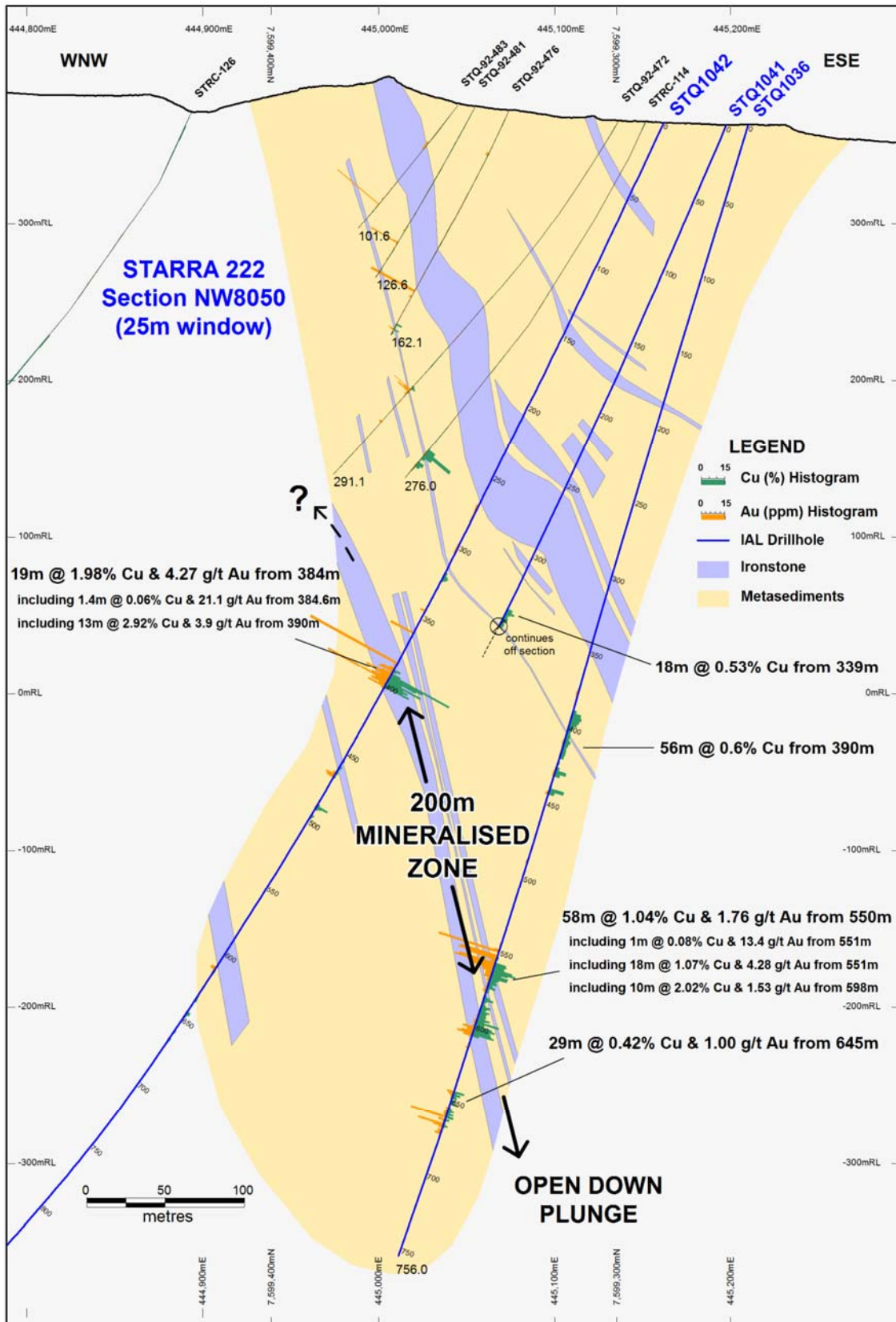


Figure 3: Starra 222 Long Section (view west)

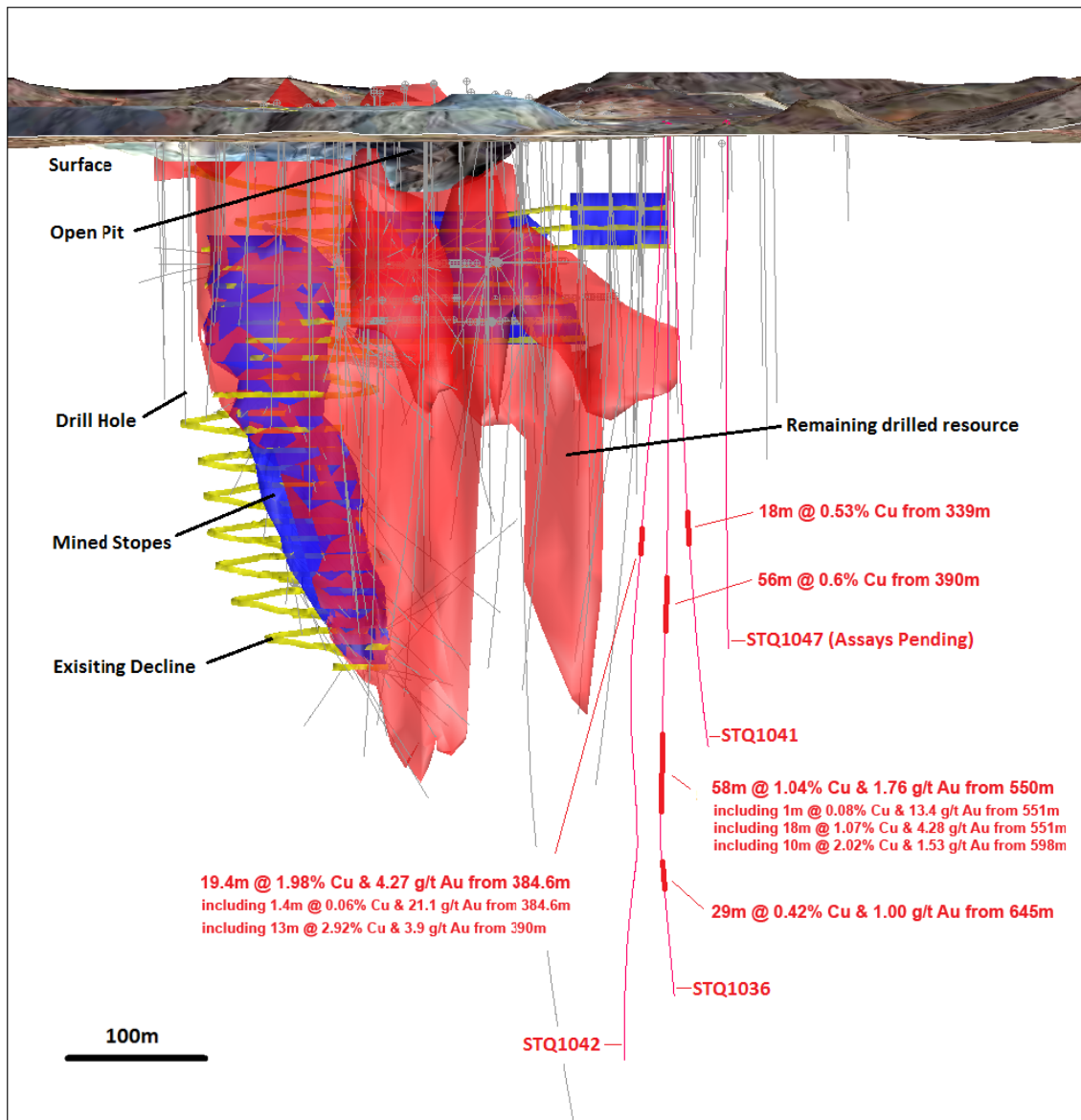


Figure 4: Starra Line Magnetic Inversion

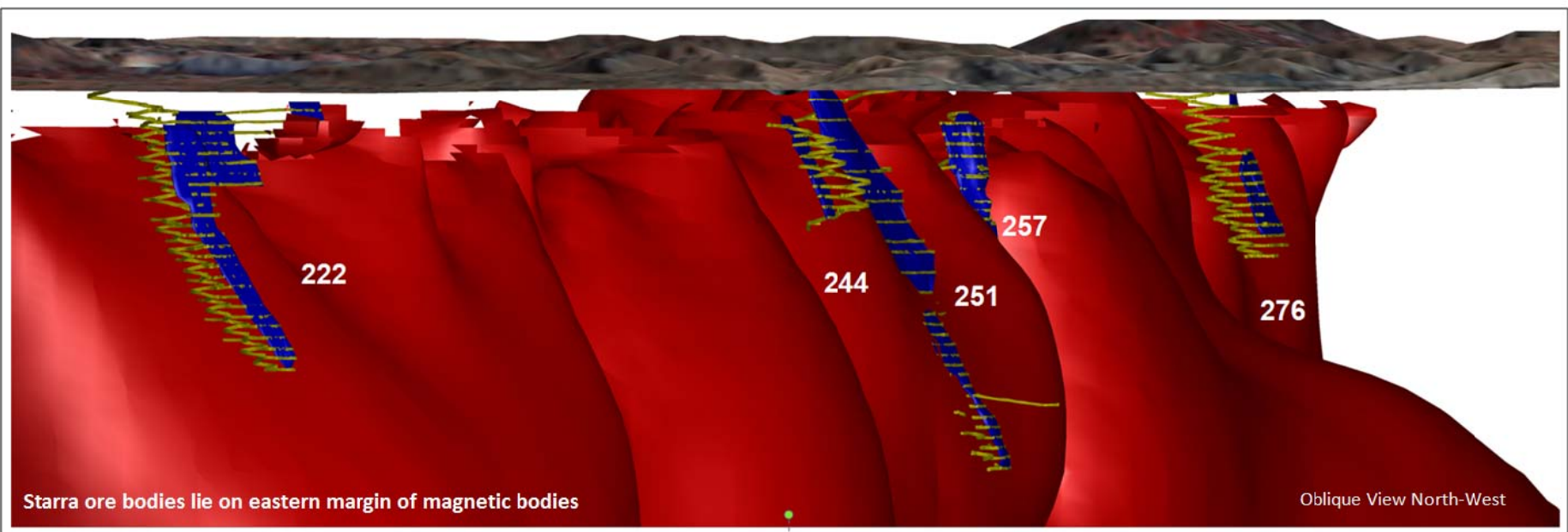
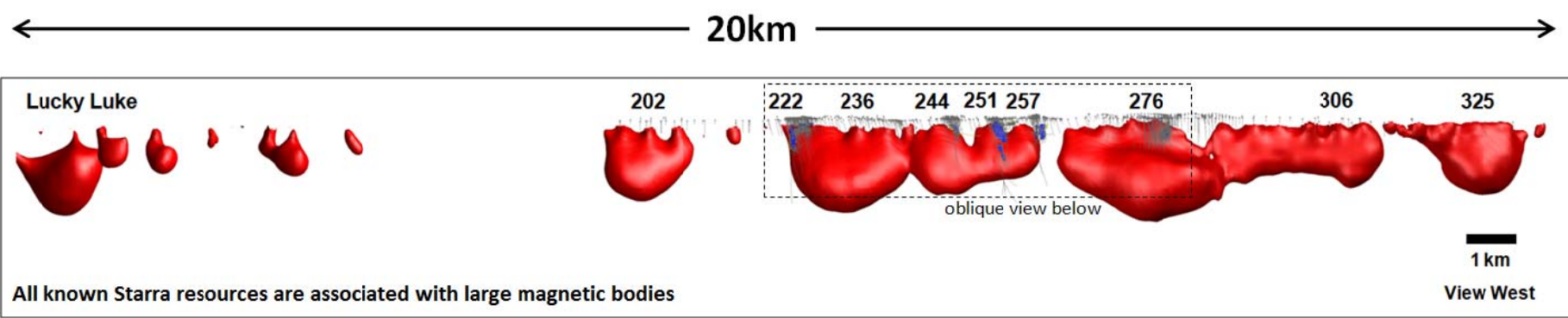


Figure 5 Chalcopyrite mineralisation intersected in STQ1041

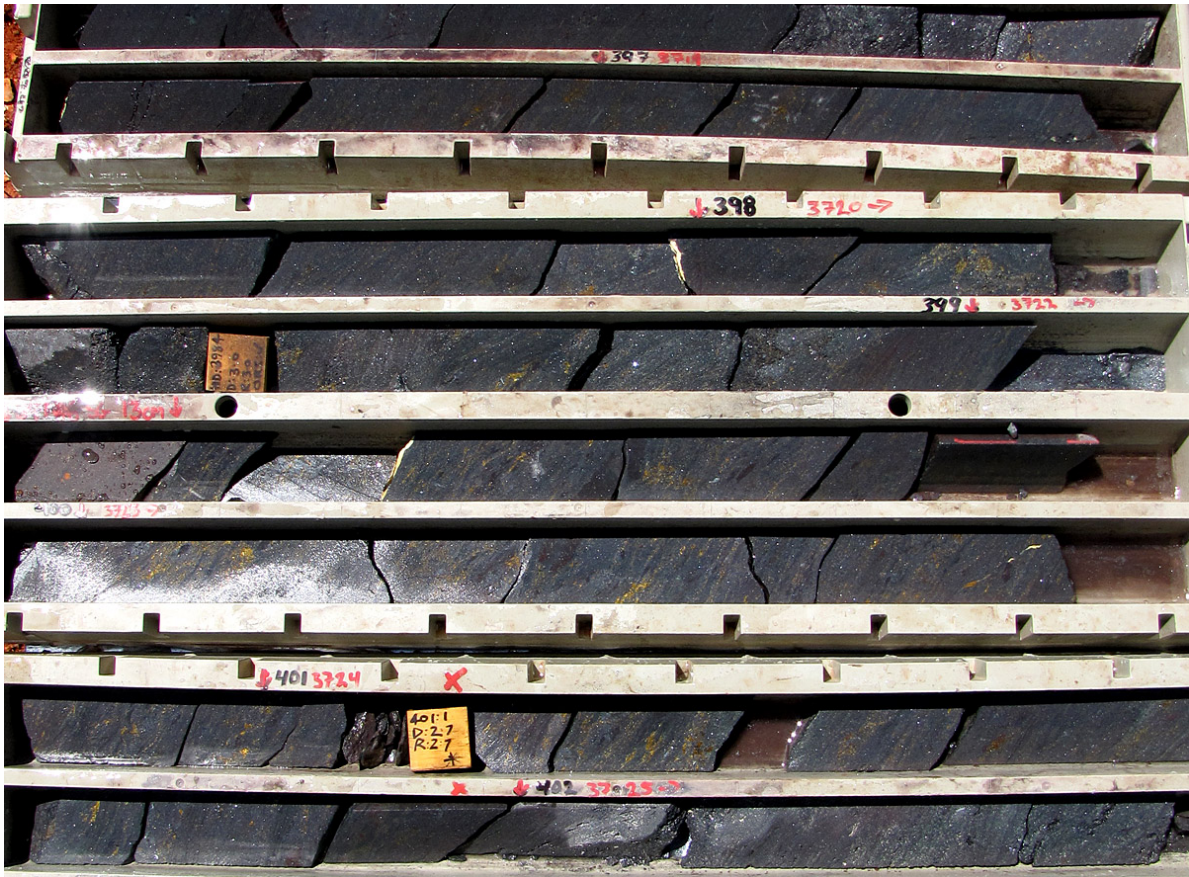
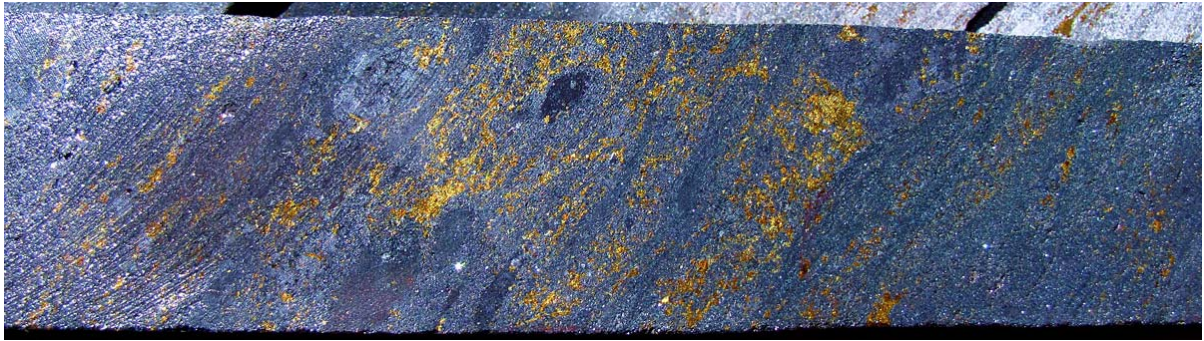


Table 1: Exploration Copper Intersections at 0.25% and 1.00% eCu Cut-offs

Exploration Copper Intersections at 0.25% and 1.00% eCu Cut-offs										Collar Coordinates				
HoleID	From (m)	To (m)	Interval	eCu (%)	Cu (%)	Au (g/t)	Ag (ppm)	U (ppm)	Co (ppm)	East	North	RL	Azi	Dip
STQ1035	94	110	16	0.55	0.48	0.10	0.27	9.69	202.69	444900	7609600	352	270	-60
STQ1036	390	446	56	0.71	0.60	0.16	0.35	5.00	22.96	445210	7599262	363	297	-73
inc	392	400	8	1.21	1.13	0.12	0.68	5.00	33.75	445210	7599262	363	297	-73
inc	410	412	2	1.01	0.80	0.31	0.30	5.00	34.00	445210	7599262	363	297	-73
inc	430	434	4	1.31	1.05	0.38	0.50	5.00	16.50	445210	7599262	363	297	-73
inc	442	446	4	1.53	1.26	0.39	0.88	5.00	11.00	445210	7599262	363	297	-73
and	550	608	58	2.28	1.04	1.76	0.27	5.34	8.33	445210	7599262	363	297	-73
inc	551	573	22	3.57	1.05	3.60	0.39	5.23	8.00	445210	7599262	363	297	-73
inc	591	608	17	2.36	1.64	1.03	0.26	5.00	9.47	445210	7599262	363	297	-73
and	645	674	29	1.12	0.42	1.00	0.31	5.17	3.90	445210	7599262	363	297	-73
inc	645	648	3	1.64	0.88	1.08	0.63	5.00	10.00	445210	7599262	363	297	-73
and	667	669	2	3.09	0.40	3.84	0.60	7.50	1.25	445210	7599262	363	297	-73
STQ1037	54.4	56.88	2.48	6.58	0.00	9.39	0.76	5.00	1.58	445016	7599333	382	297	-50
STQ1041	339	357	18	0.61	0.53	0.12	0.23	5.56	27.28	445198	7599269	363	301	-67
and	380	384	4	2.39	0.93	2.08	0.90	5.00	2.50	445198	7599269	363	301	-67
and	517	523	6	0.46	0.40	0.09	0.23	5.83	46.50	445198	7599269	363	301	-67
STQ1042	272	278	6	0.31	0.03	0.40	0.25	8.33	37.00	445160	7599283	364	294	-65
and	320	326	6	0.46	0.44	0.02	0.29	7.50	12.50	445160	7599283	364	294	-65
and	384.6	404	19.4	4.96	1.98	4.27	1.66	7.16	5.74	445160	7599283	364	294	-65
inc	390	403	13	5.65	2.92	3.90	1.91	6.92	6.65	445160	7599283	364	294	-65
and	461	469.4	8.4	0.68	0.21	0.68	0.25	6.79	16.23	445160	7599283	364	294	-65
inc	467	469.4	2.4	1.42	0.15	1.82	0.25	5.00	5.33	445160	7599283	364	294	-65

Note:
1. eCu% = Cu% + (0.7 x Au g/t)