

Figure 1. Ivanhoe Australia's Cloncurry Tenements

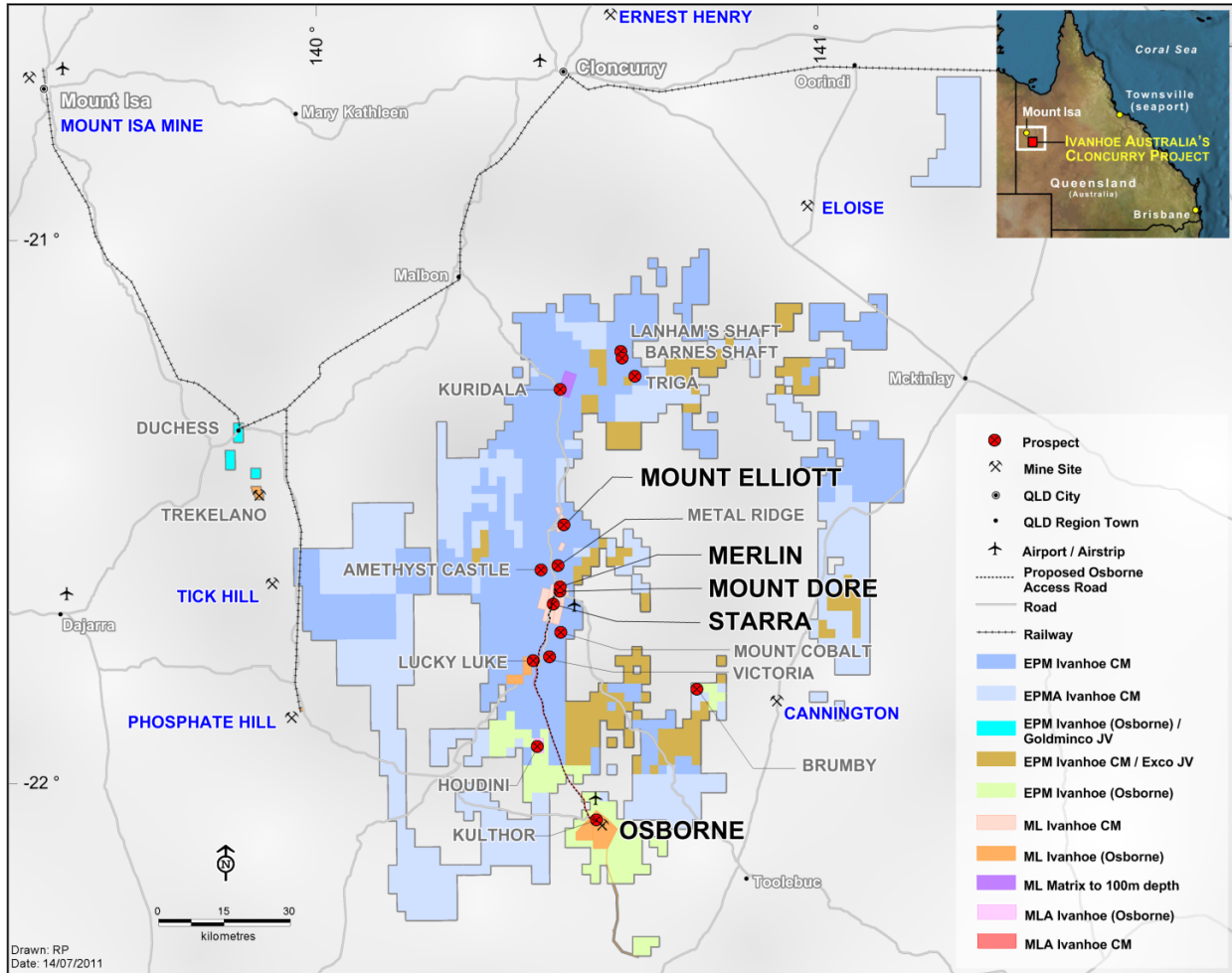


Figure 2. First Ore from Kulthor – August 2011

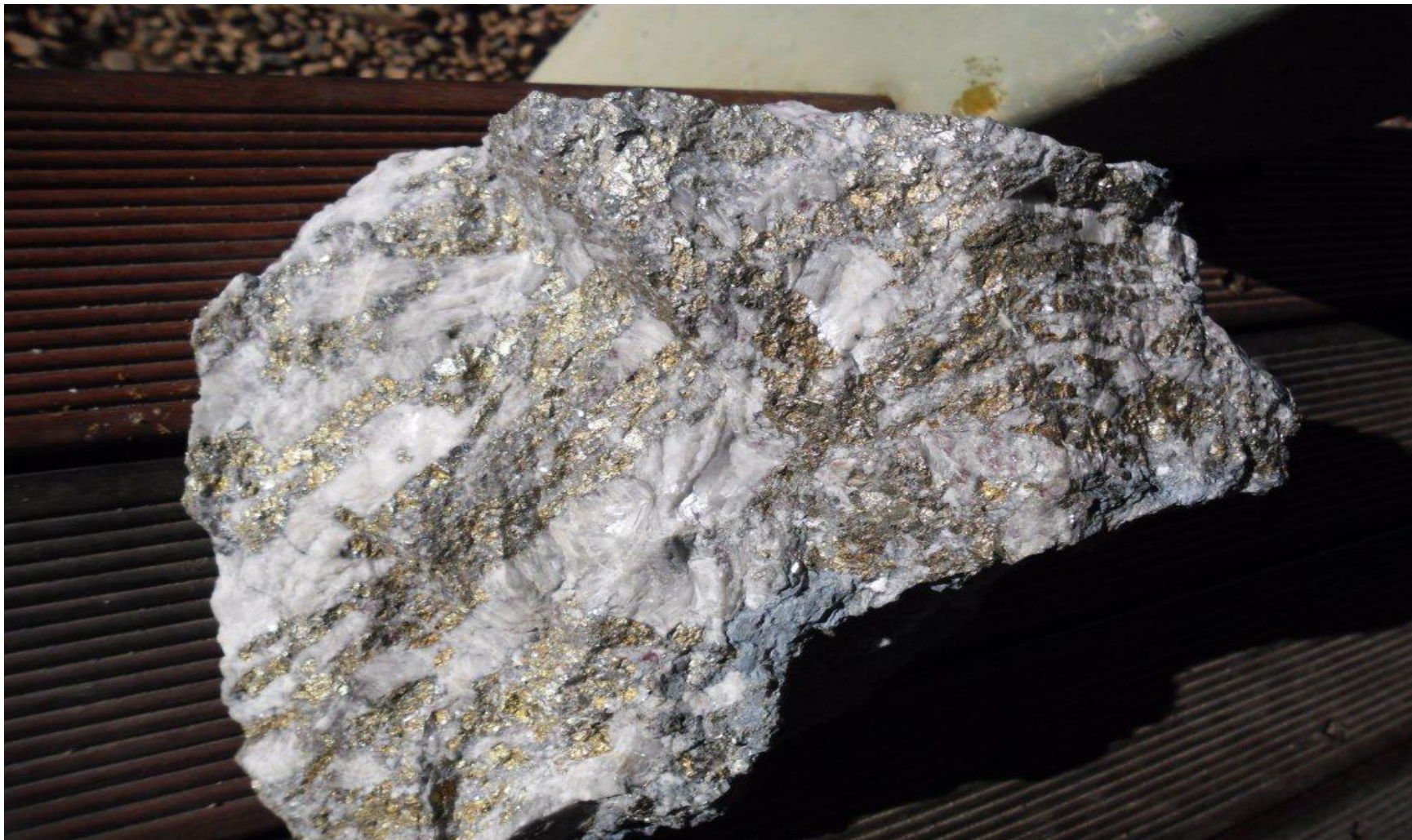


Figure 3. Kulthor and Osborne Underground Development

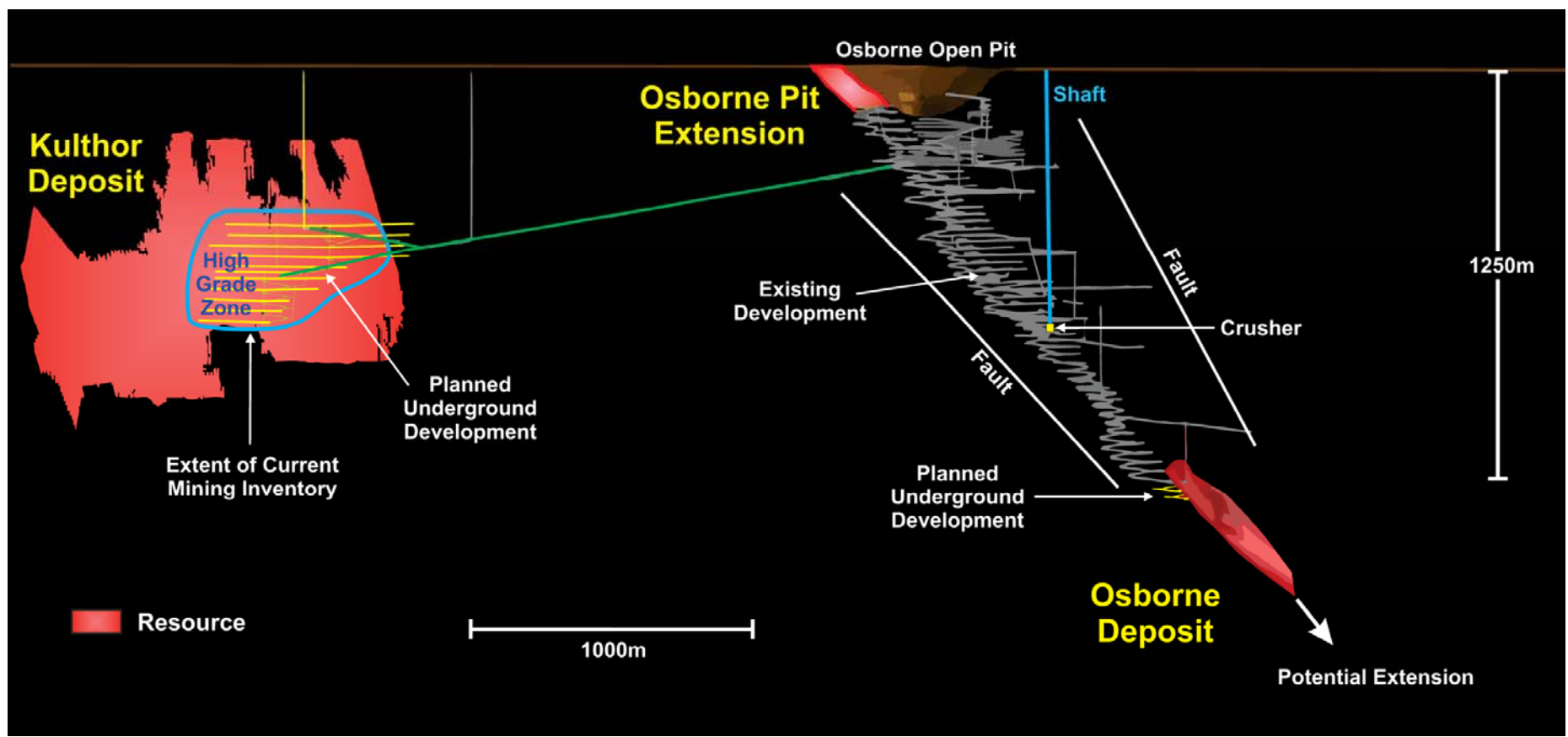


Figure 4. Osborne, Kulthor and Avalon Magnetic Susceptibility Anomalies

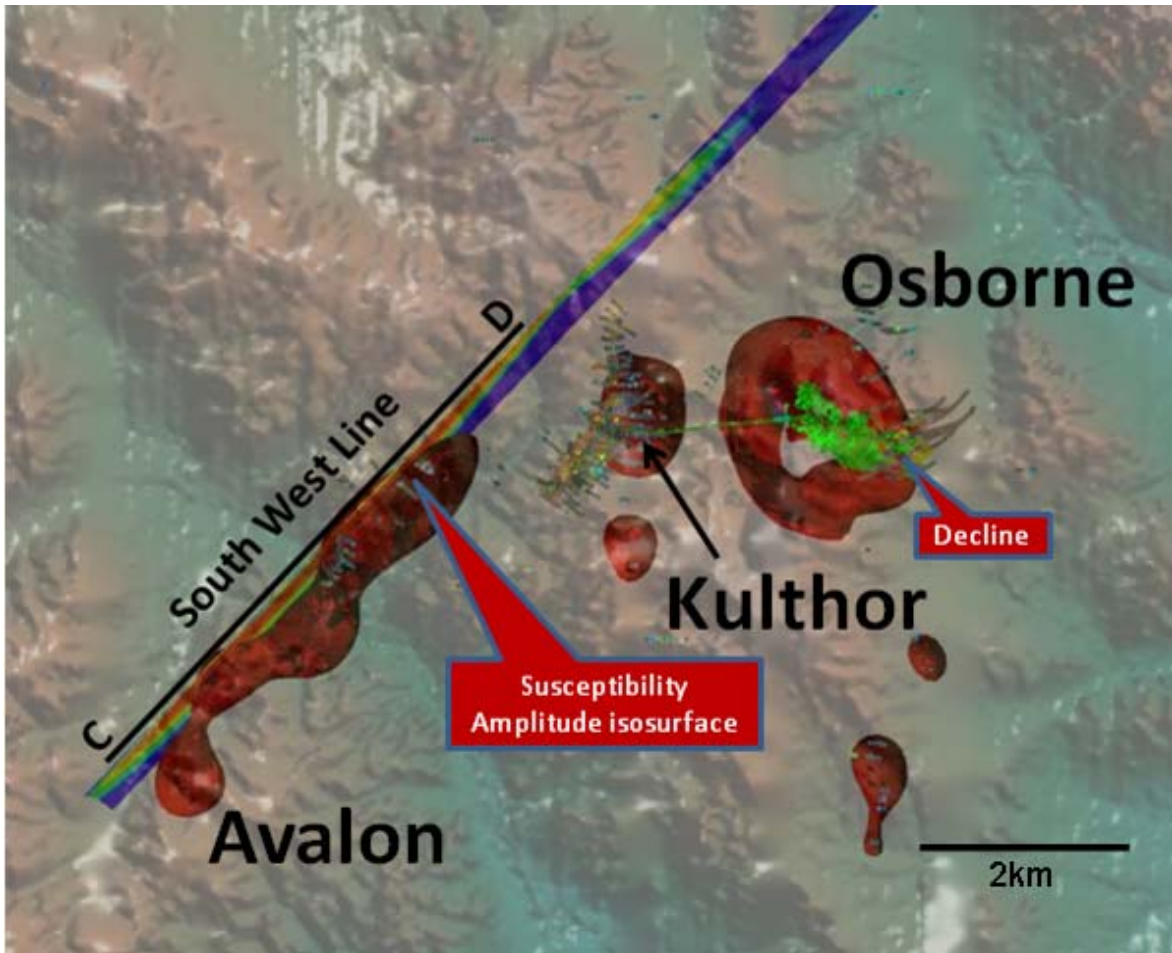


Figure 5. Avalon prospect Magnetics Anomaly

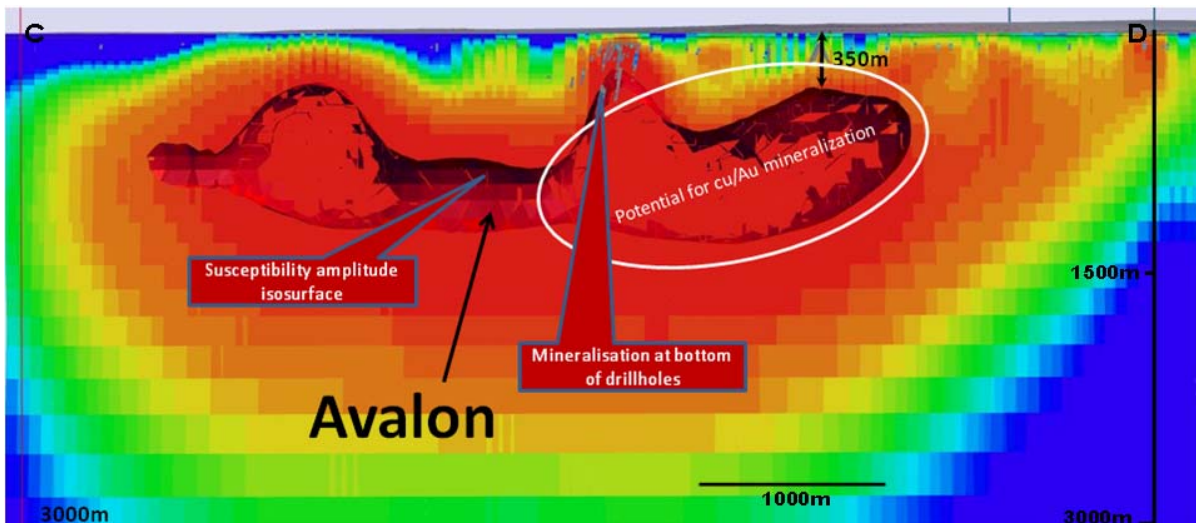


Figure 6. Exploration targeting further resources for Osborne Copper-Gold Project

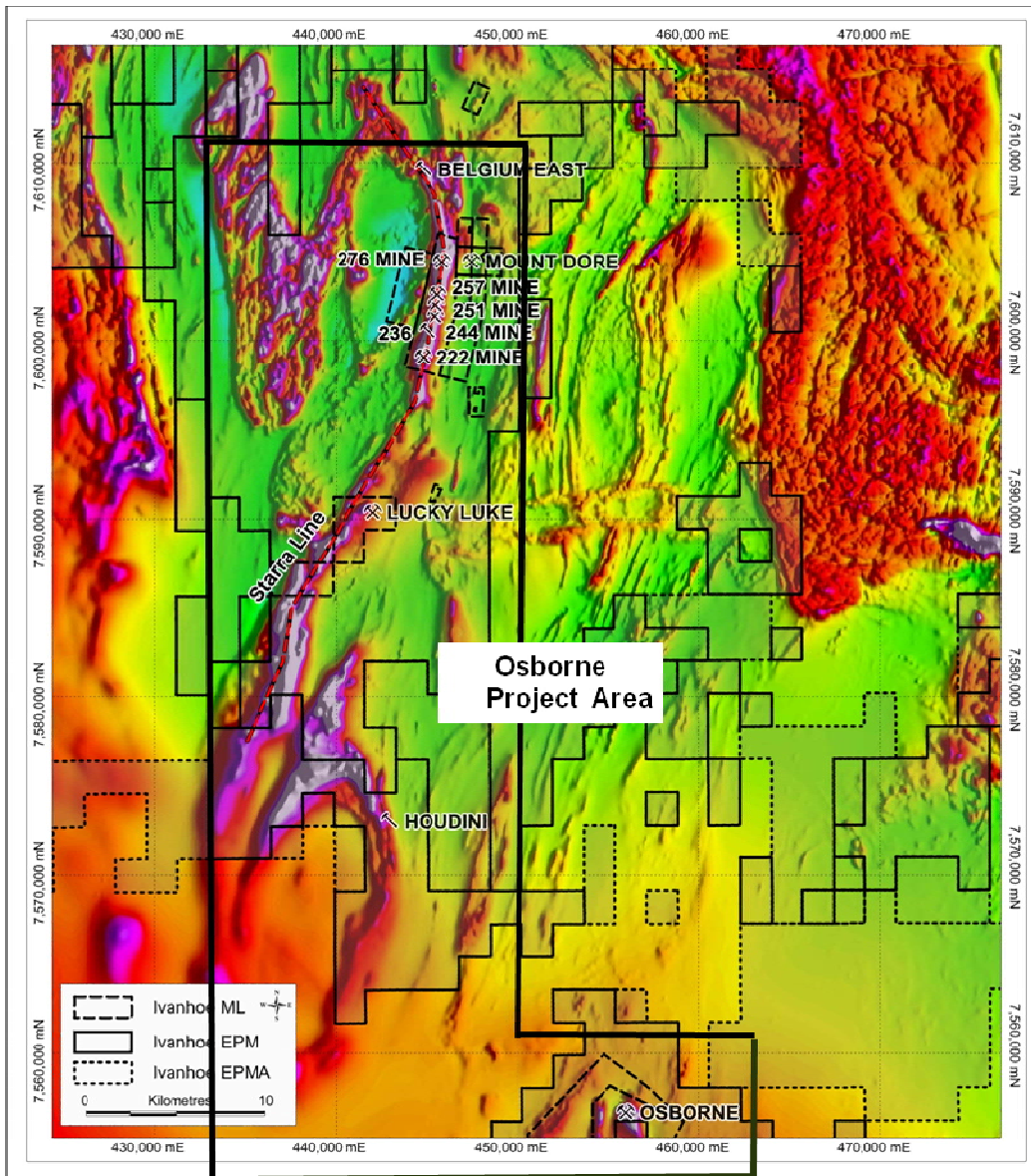
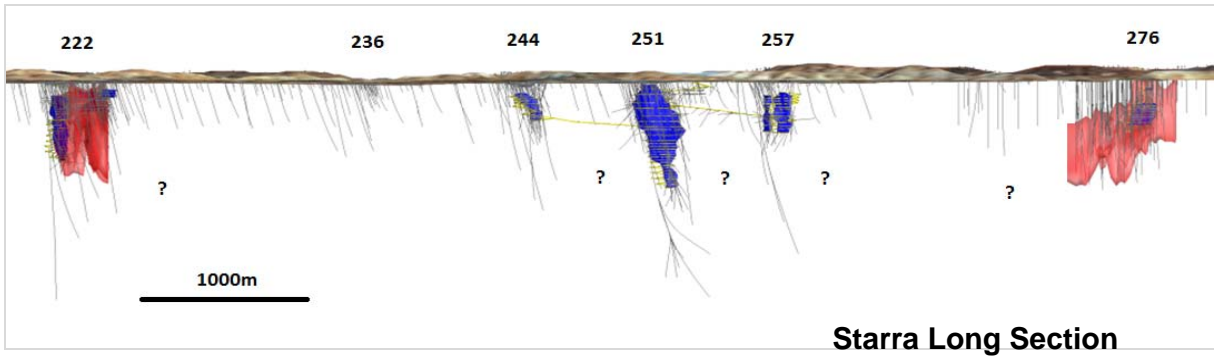


Figure 7. Merlin Decline – Now more than 1,370 metres

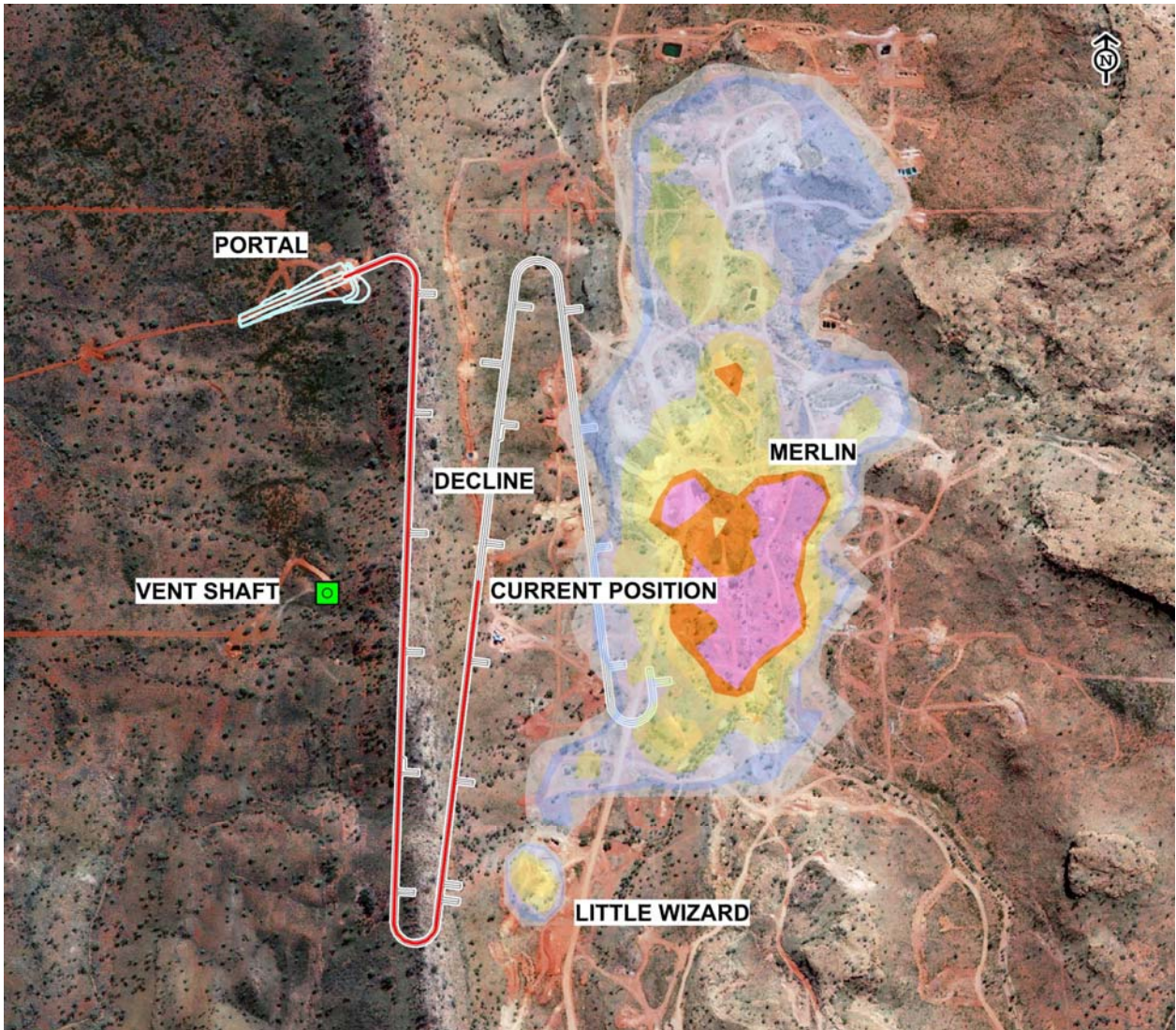


Figure 8. Proposed Molybdenum/Rhenium Processing Plant, adjacent to existing Osborne plant



Figure 9. Mount Dore mineralised complex

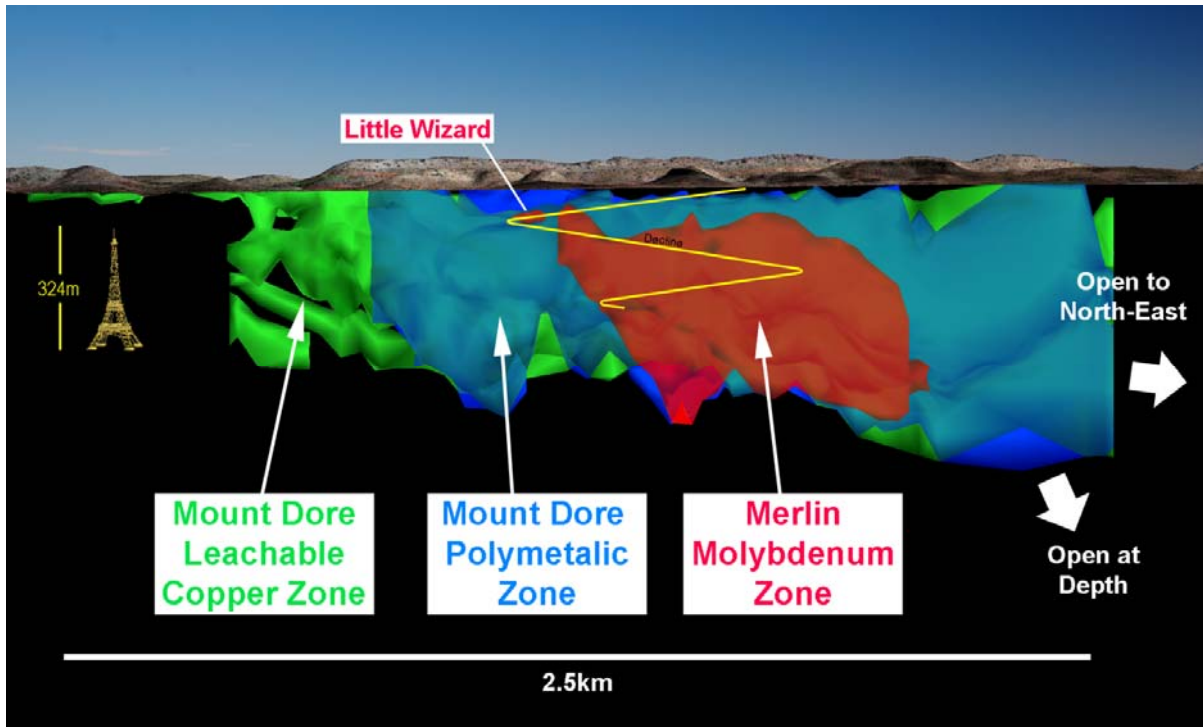


Figure 10. Mount Dore proposed open pit profile

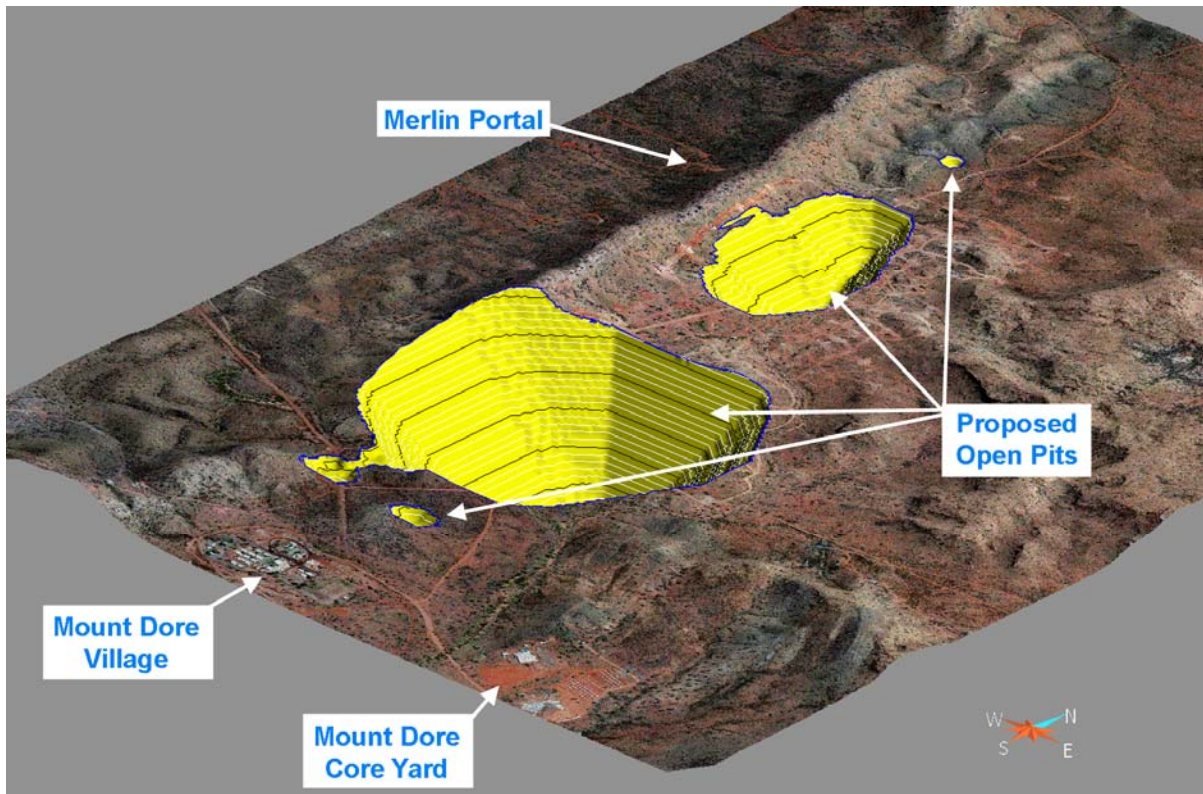


Figure 11. Mount Elliott deposit

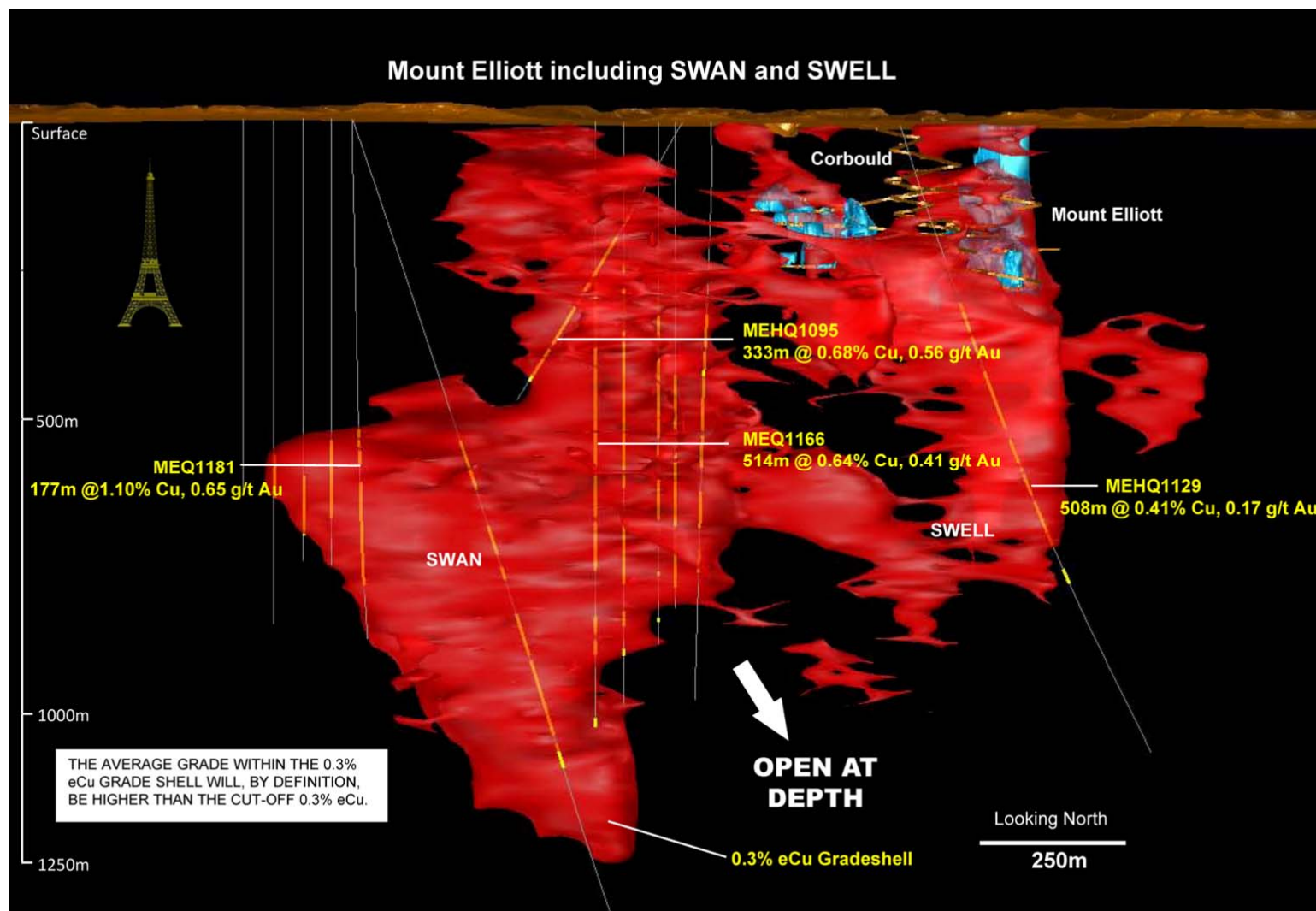


Figure 12. Swan High Grade Zone

