

Photo: Chalcopyrite (yellow)-quartz (white) veins, Hole F62, 600m depth, 1.35% Cu

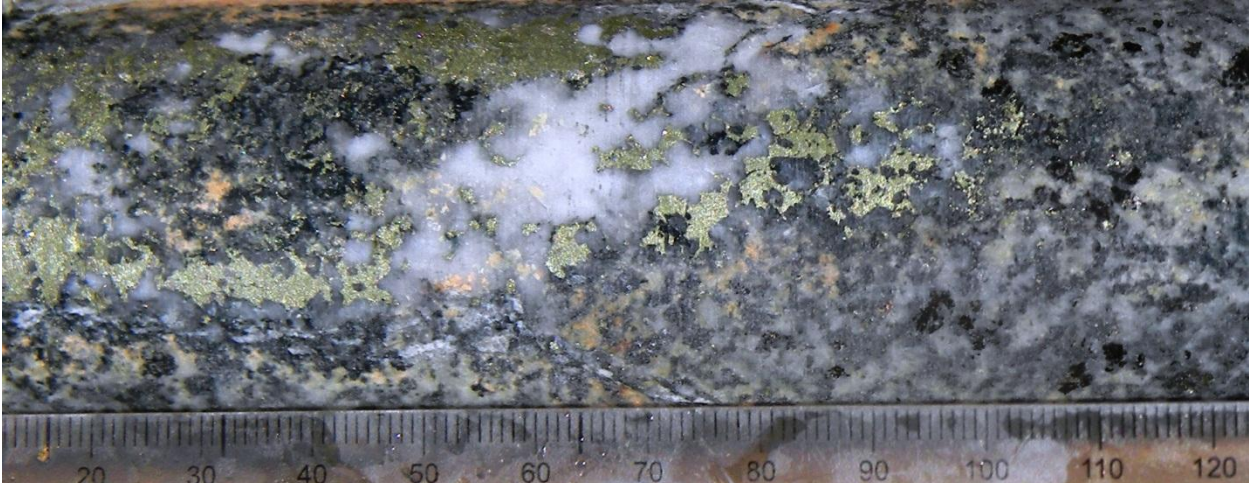


Photo: Chalcopyrite (yellow) –quartz (white) veins at 662m of F62 (0.96% Cu)

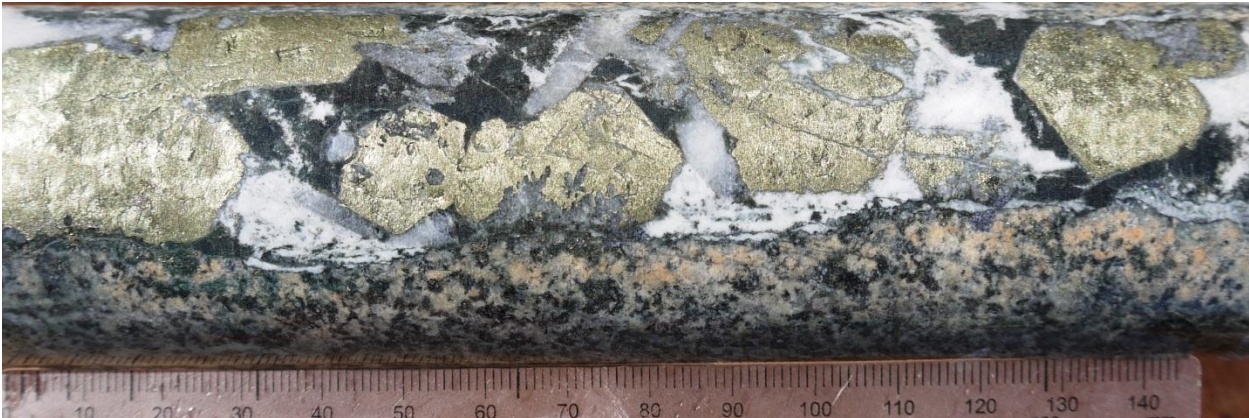


Photo: high grade chalcopyrite vein at 810m, Hole F62 (3.12% Cu)



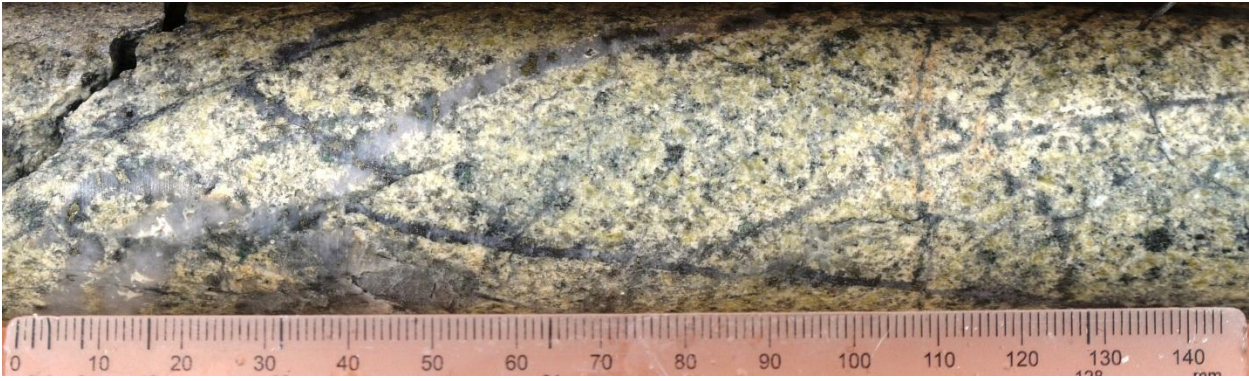


Photo: Stockwork quartz-chalcopyrite veins in strong granodiorite with strong argillic alteration. Hole F62, 1,050m

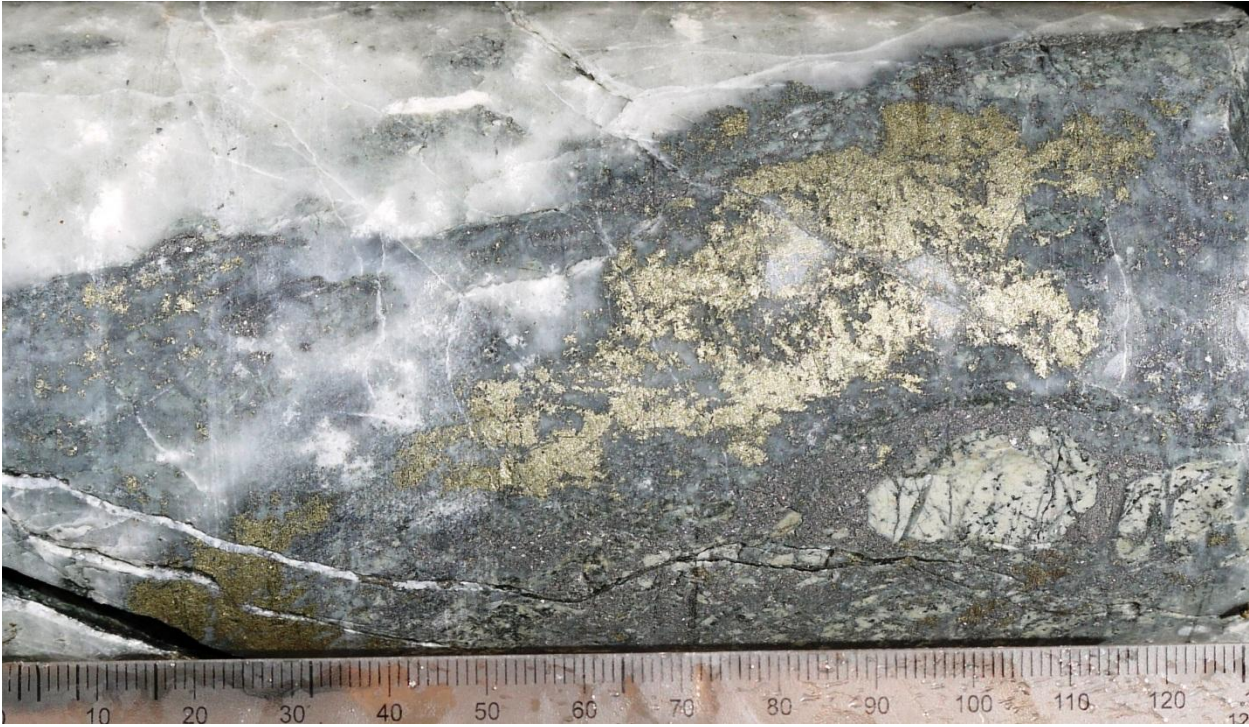


Photo: Chalcopyrite (yellow) mineralisation at 76.9m of Hole F77 at Tourmaline Hills (1.86% Cu)



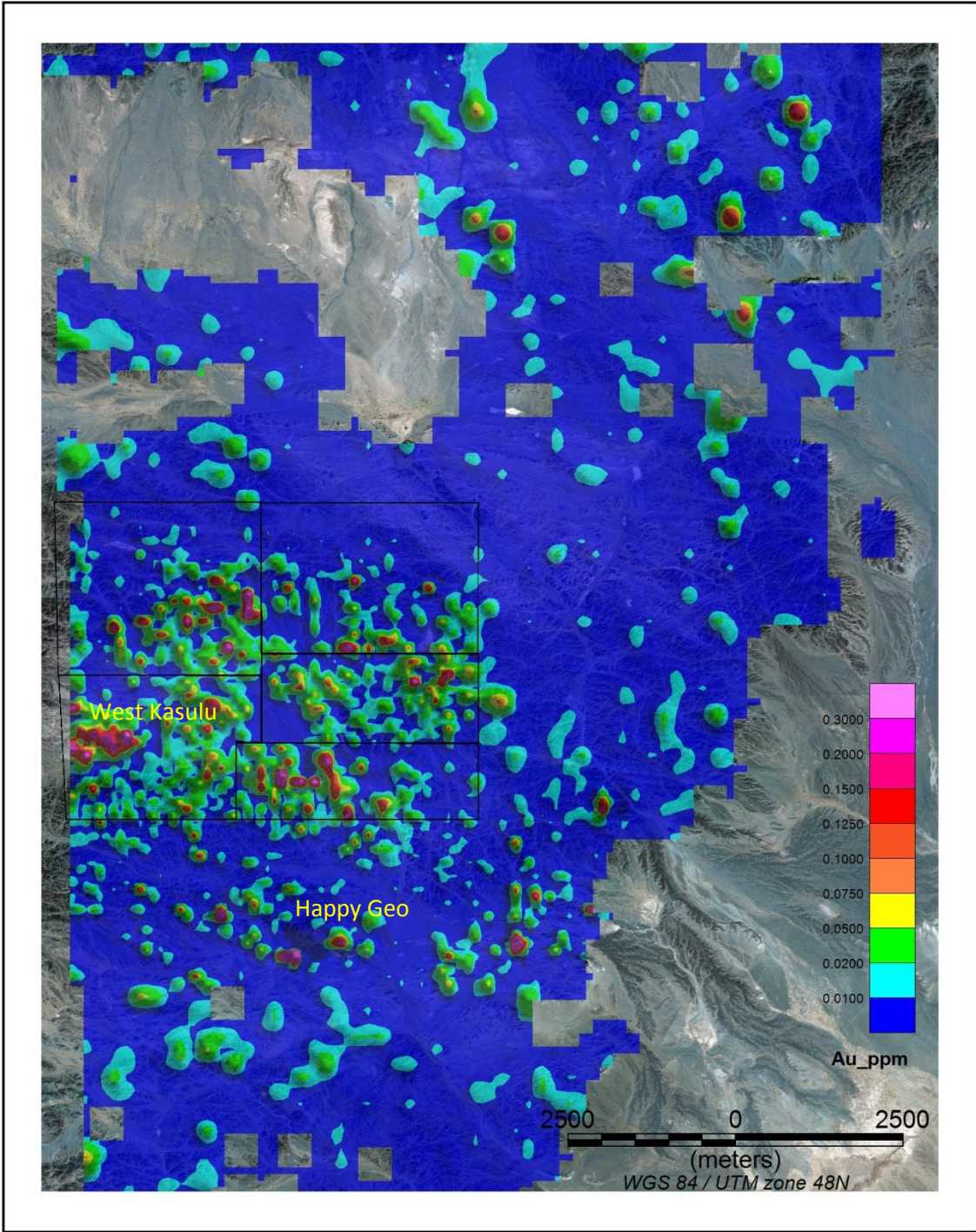


Figure: Au soil gold anomaly map in license 15000X

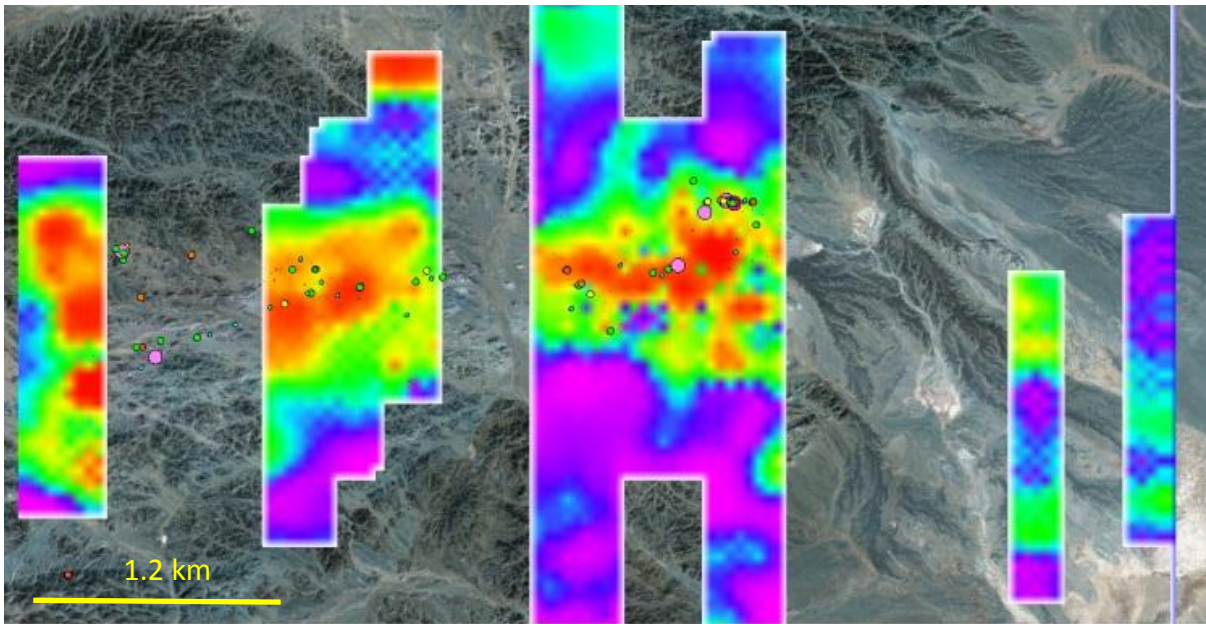


Figure: 3P IP chargeability anomaly slice map along Happy Geo zone at depth of 250m. The dots represent rock chip samples (green 0.2-0.5g/t Au, yellow 0.5-1g/t Au, orange 1-5g/t Au, red, 5-10g/t Au and pink >10g/t Au)