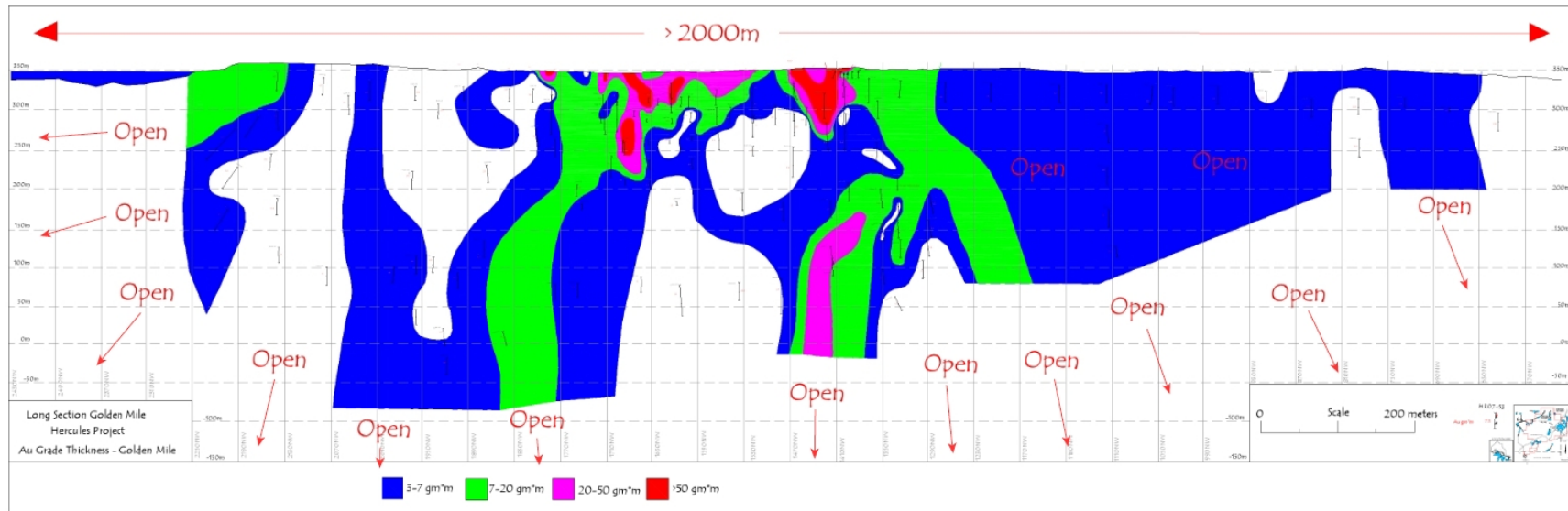


*Figure One: Inclined Long Section, Golden Mile vein system, Hercules Project* showing contoured grade thickness intervals in gram-metres. The new deep high grade zone is in the central portion of the section. Mineralization also continues to the east of this section (right hand side) an additional 350 metres. The system remains open along strike and at depth.



*Figure Two: Three dimensional model of the Golden Mile gold zone as viewed from the northwest. The model depicts the drilled portion of the Golden Mile as indicated by the drill holes shown in red to a depth of 450 metres. The down-dip projection of the structure to 1,000 metres is shown and will be the target of ongoing drilling as the system is still open.*

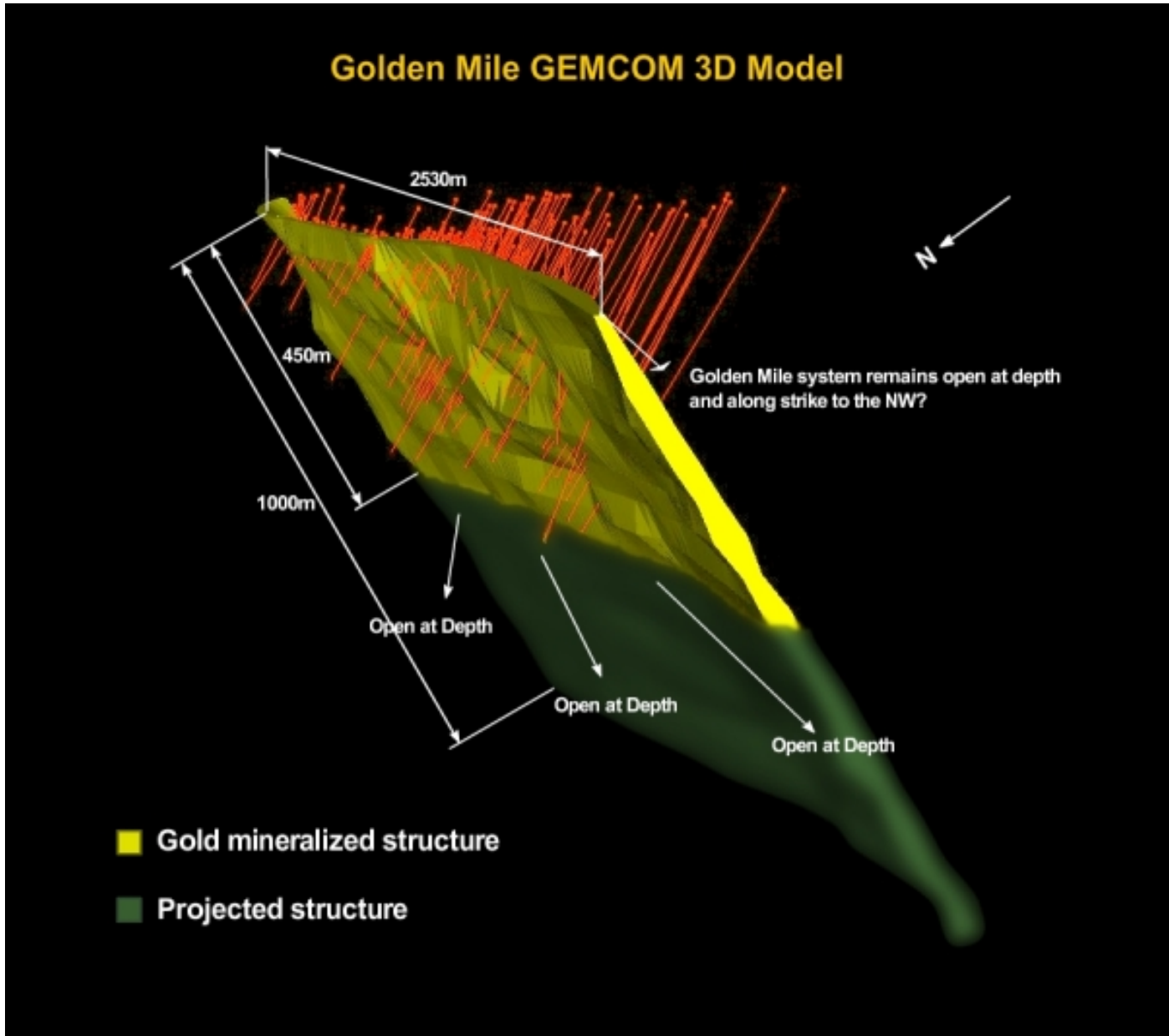
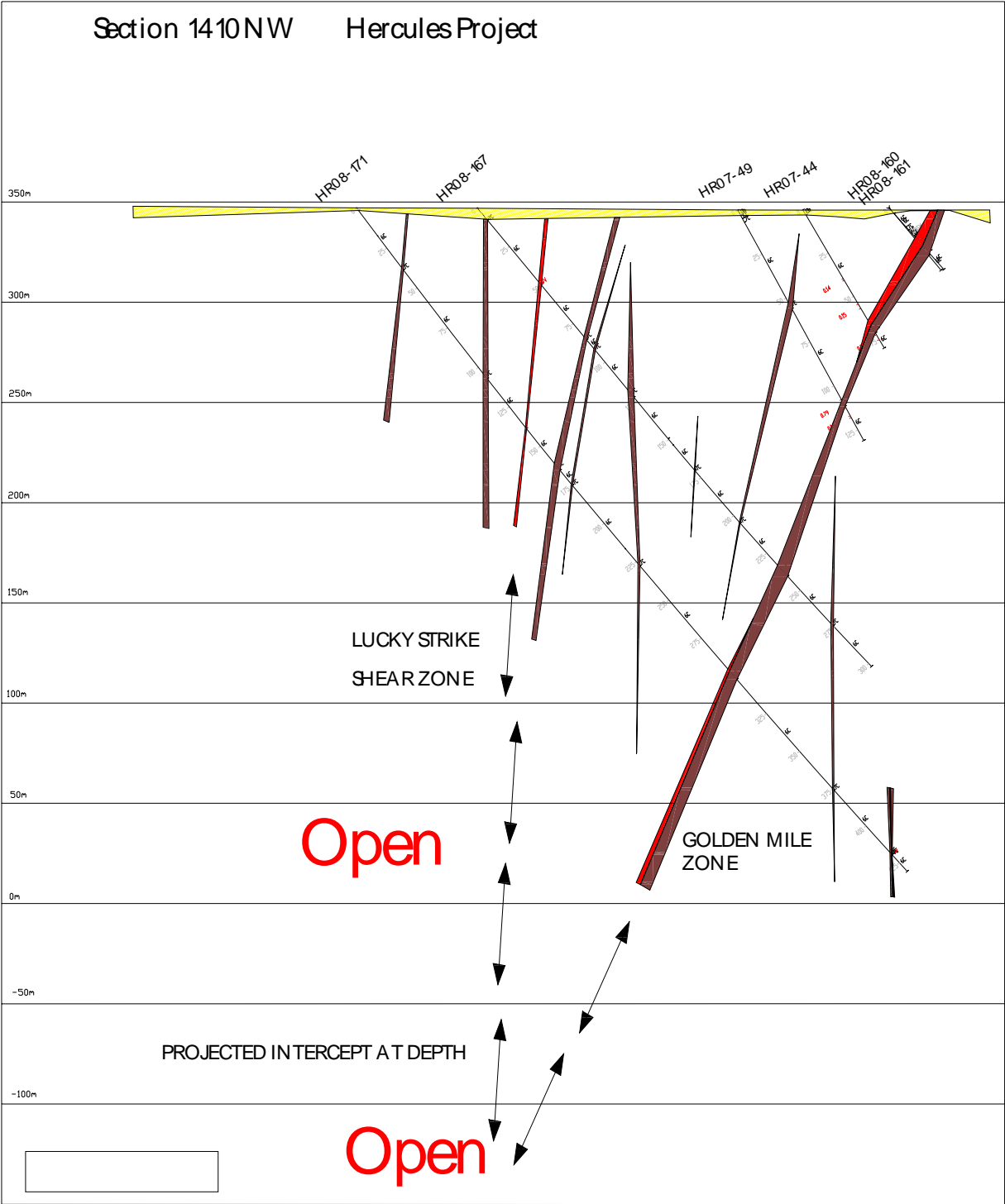
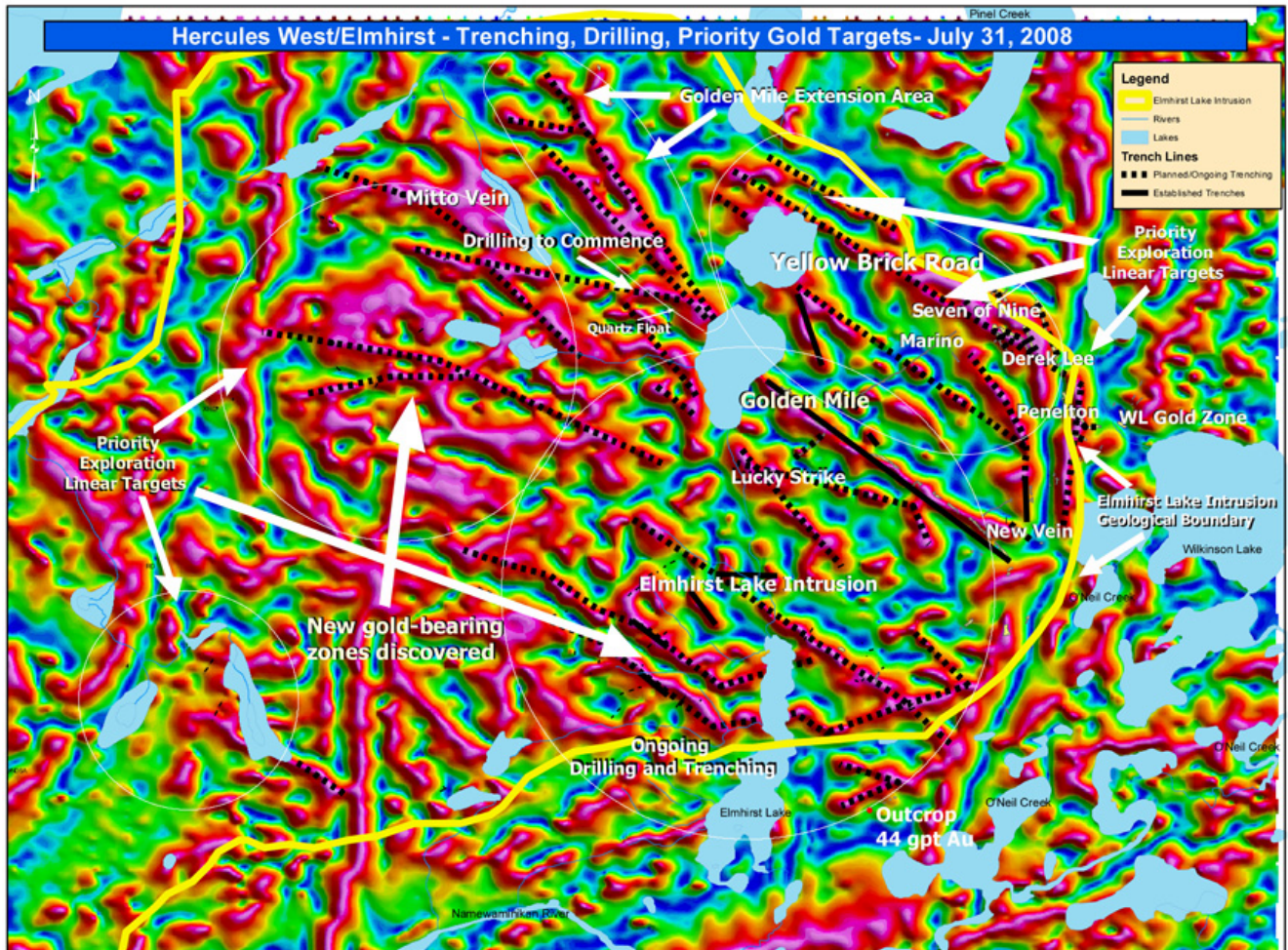


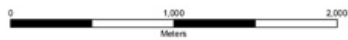
Figure Three: Cross section looking northwest through the Golden Mile and Lucky Strike structures. The cross section shows the potential for a deep intersection of the two structures, a common control to higher grade mineralization.



*Figure Four. Hercules Project veins, exploration and drill targets.* The map shows areas of prospecting, trenching and drilling within the Elmhirst Lake intrusion superimposed upon the detailed magnetic signature of the intrusion. The use of the magnetic data to guide exploration is important as most of the gold targets identified to date correspond to linear magnetic features.



The Qualified Person for this project under the definition of NI 43-101 is Robert Hawkins, P. Geo



1:15,000