
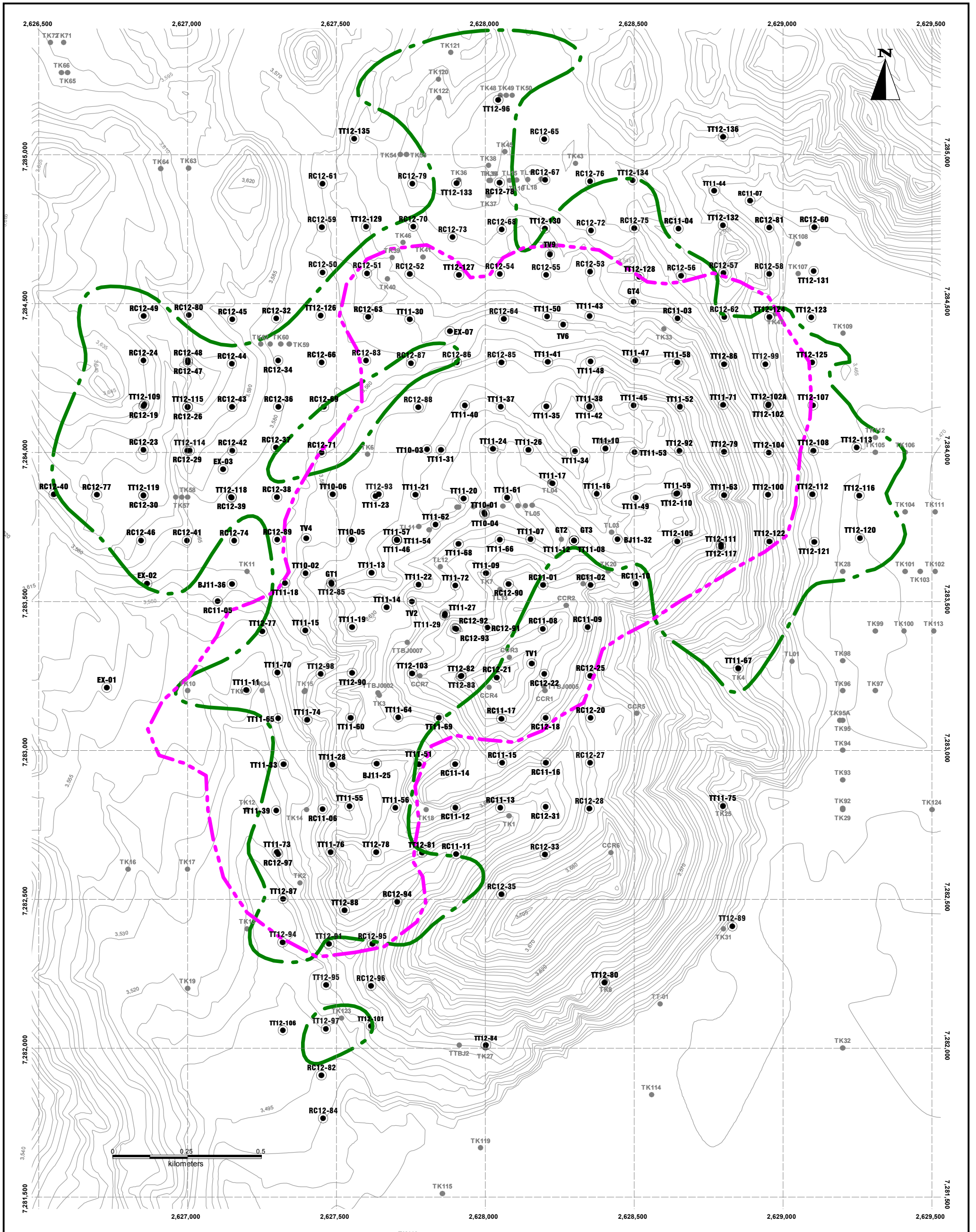


LEGEND

- >0.20g/t Au Inferred Oxide Gold Resource boundary
- >0.50% CuEq Indicated Supergene Resource boundary
- >0.30% CuEq Indicated+Inferred Sulphide Resource boundary
- pre-Lumina drillholes
- Lumina drillholes used in current resource calculation

NOTE: "TT", "RC", "EX", "GT" and "TV" series of holes are "TTBJ", "TTPC", "TTRC", "TTEX", "TTGT" and "TTTTV" holes with abbreviated names. "Copper equivalent boundaries are per the current 43-101 compliant resource estimate"

 TACA TACA PROJECT	
<p>PRESS RELEASE</p> <p>Date: Nov19,2012</p> <p>Author: C.A.S.A.</p> <p>Office: Salta</p> <p>Drawing: E.S.A.</p> <p>Scale: 1:12,000</p>	<p>INDICATED AND INFERRED RESOURCES</p> <p>DRILLING PROGRAM</p> <p>2010 - 2012</p>
<p>Projection: Transverse Mercator (Gauss Kruger) Campo Inchauspe - Zone 2</p>	



LEGEND

- - - >0.30% CuEq Indicated+Inferred Sulphide Resource boundary (May2012)
- - - >0.30% CuEq Indicated+Inferred Sulphide Resource boundary (Current)
- pre-Lumina drillholes
- Lumina drillholes used in current resource calculation

NOTE: "TT", "RC", "EX", "GT" and "TV" series of holes are "TTBJ", "TTPC", "TTRC", "TTEX", "TTGT" and "TTTTV" holes with abbreviated names. "Copper equivalent boundaries are per the current 43-101 compliant resource estimate"



TACA TACA PROJECT

PRESS RELEASE

Date: Nov19,2012

Author: C.A.S.A.

Office: Salta

Drawing: E.S.A.

Scale: 1:12,000

**INDICATED AND INFERRED RESOURCES
DRILLING PROGRAM
2010 - 2012**

Projection: Transverse Mercator (Gauss Kruger)
Campo Inchauspe - Zone 2