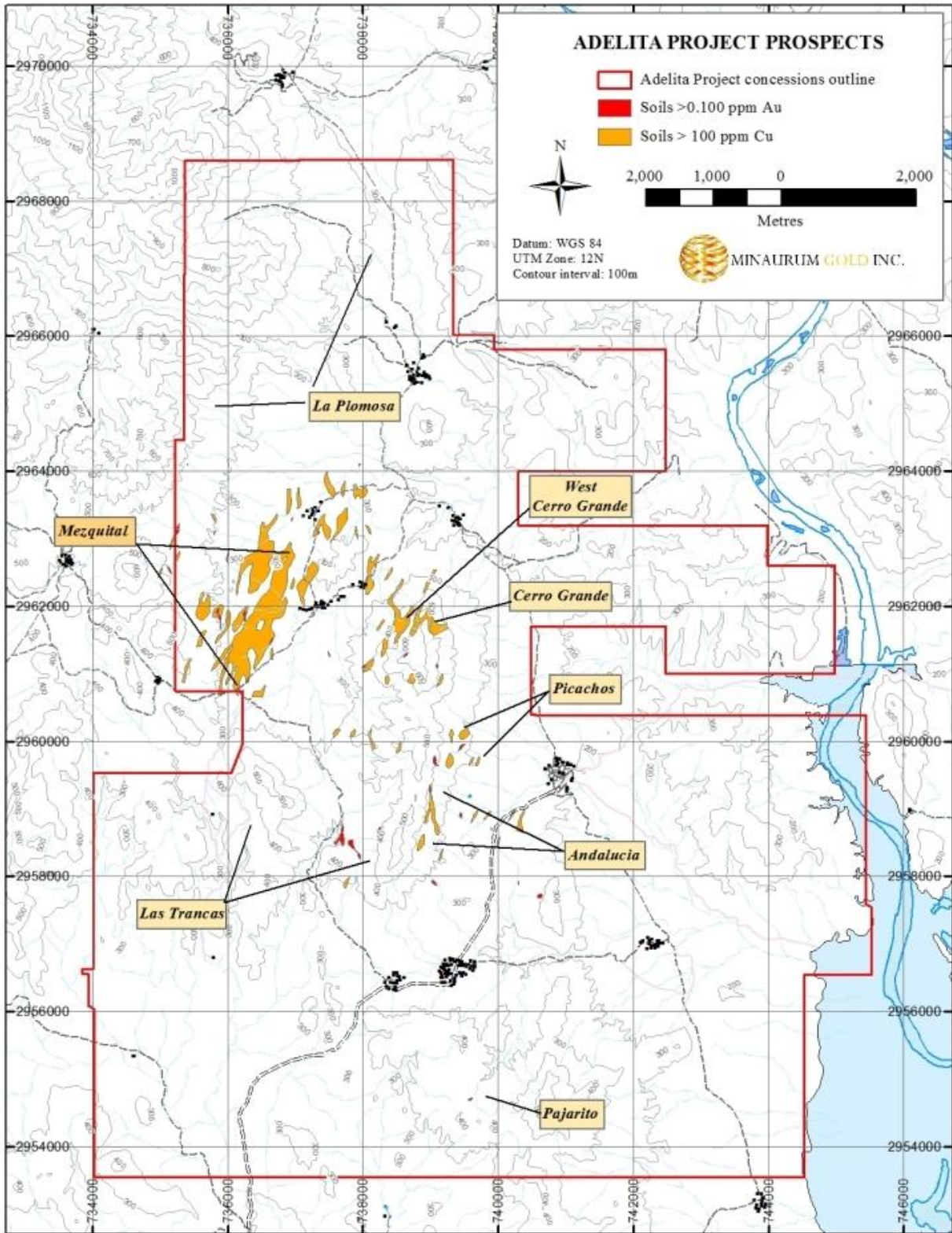
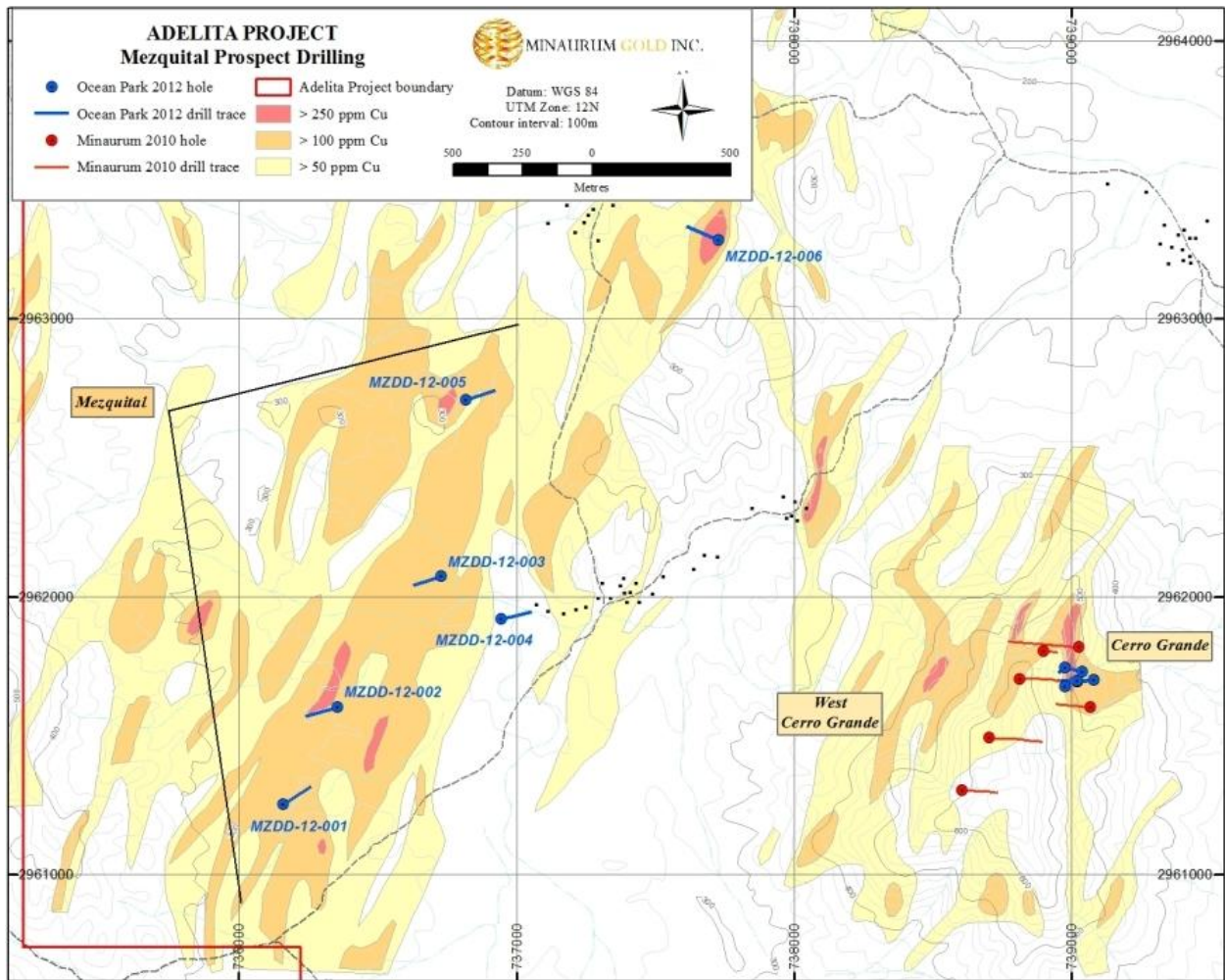


Drill map of Cerro Grande prospect. Note that Ocean Park's 2012 drilling (in blue) is concentrated along less than 100 m of strike length of mineralized zone. Please see previous Minaurum press releases for mineralization encountered in drilling.



Map of Adelita project showing outline of concessions and locations of prospect areas described in this report.



Map of Mezquital - Cerro Grande areas, showing locations of drill collars relative to copper-in-soil anomalies. Note that nearly all of the 2012 drilling at Mezquital was oriented subparallel to NNE trend of contoured copper anomalies.