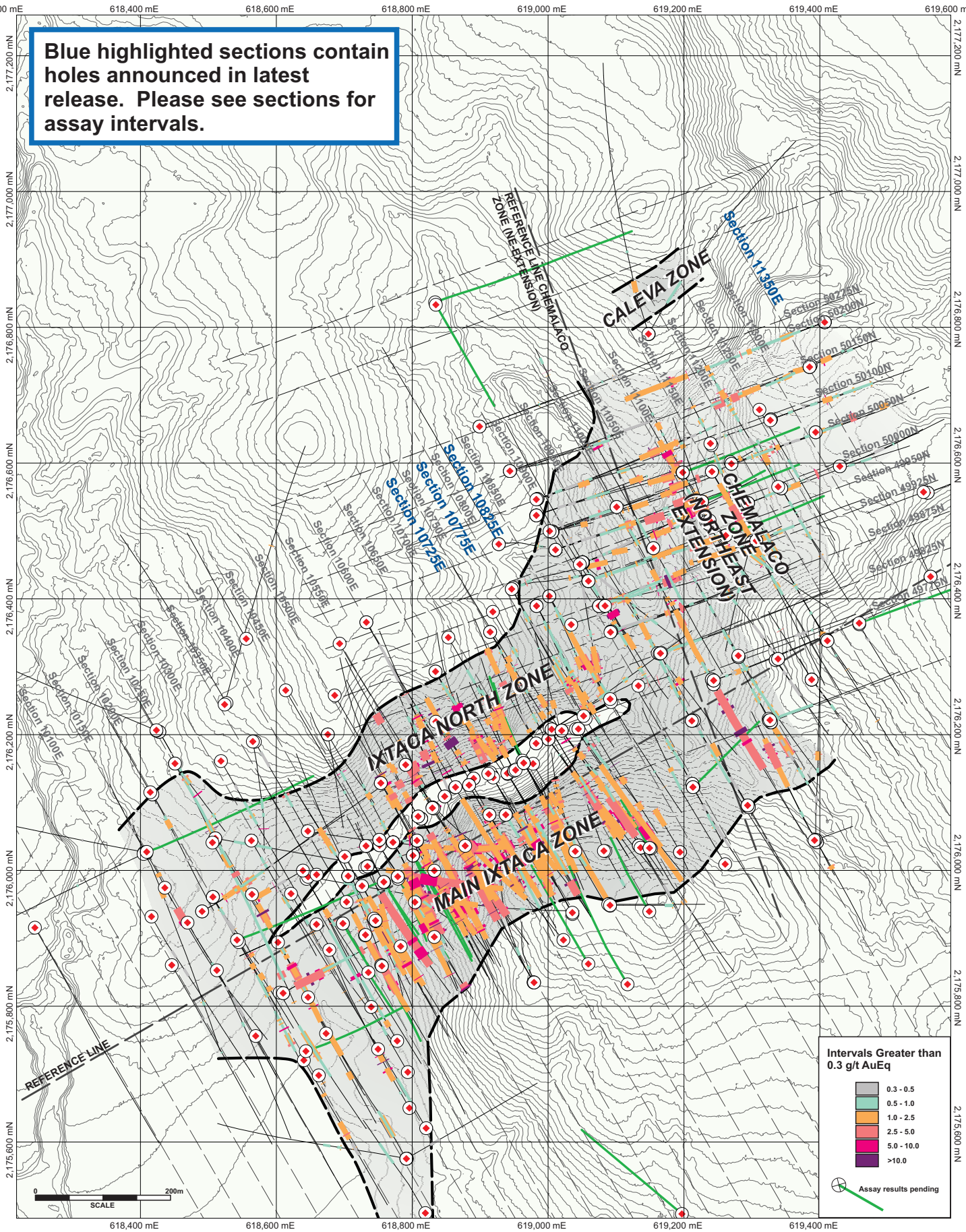


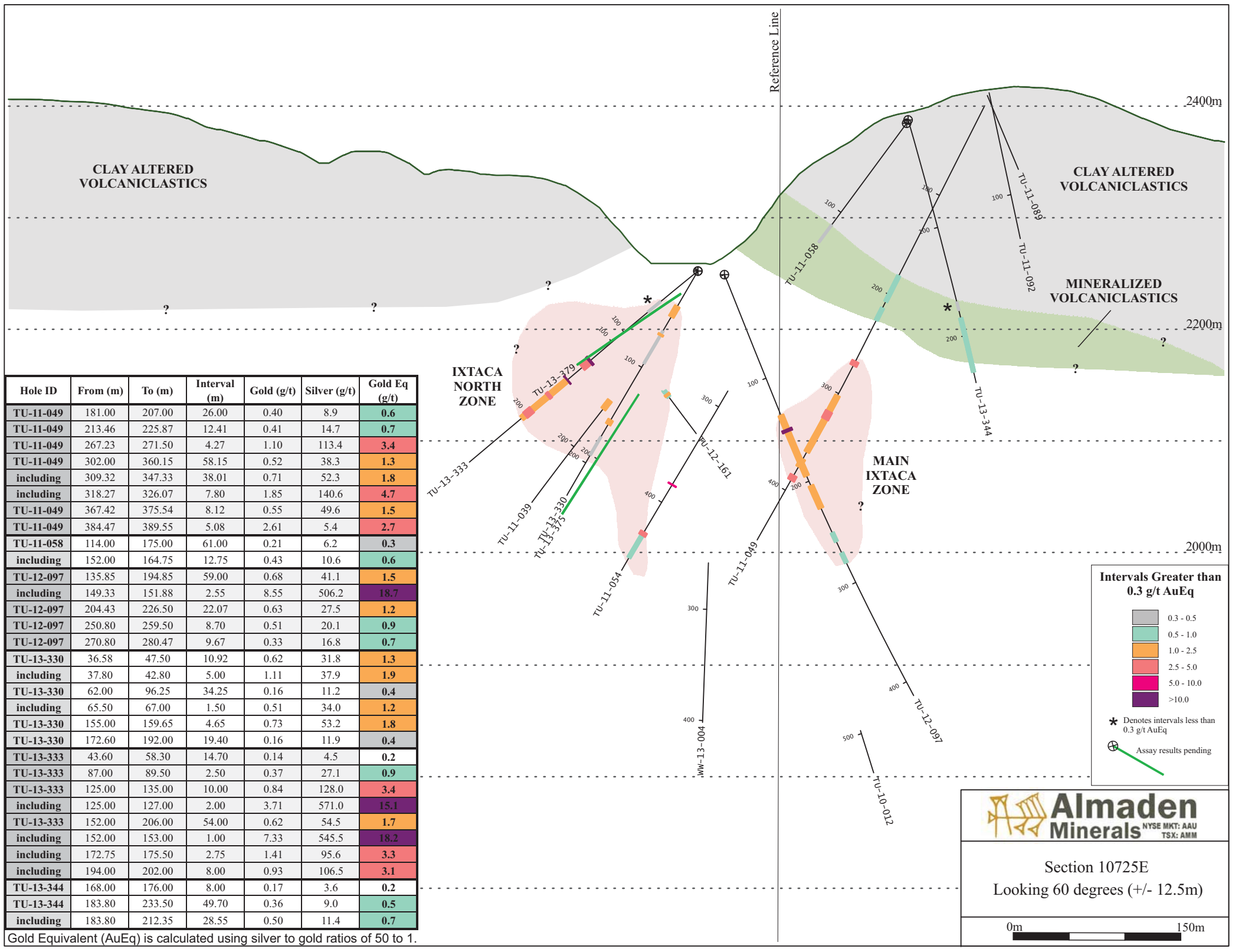
**Blue highlighted sections contain holes announced in latest release. Please see sections for assay intervals.**



**Intervals Greater than 0.3 g/t AuEq**

Grey	0.3 - 0.5
Light Green	0.5 - 1.0
Orange	1.0 - 2.5
Yellow	2.5 - 5.0
Red	5.0 - 10.0
Purple	>10.0

Assay results pending



Hole ID	From (m)	To (m)	Interval (m)	Gold (g/t)	Silver (g/t)	Gold Eq (g/t)
TU-11-049	181.00	207.00	26.00	0.40	8.9	0.6
TU-11-049	213.46	225.87	12.41	0.41	14.7	0.7
TU-11-049	267.23	271.50	4.27	1.10	113.4	3.4
TU-11-049	302.00	360.15	58.15	0.52	38.3	1.3
including	309.32	347.33	38.01	0.71	52.3	1.8
including	318.27	326.07	7.80	1.85	140.6	4.7
TU-11-049	367.42	375.54	8.12	0.55	49.6	1.5
TU-11-049	384.47	389.55	5.08	2.61	5.4	2.7
TU-11-058	114.00	175.00	61.00	0.21	6.2	0.3
including	152.00	164.75	12.75	0.43	10.6	0.6
TU-12-097	135.85	194.85	59.00	0.68	41.1	1.5
including	149.33	151.88	2.55	8.55	506.2	18.7
TU-12-097	204.43	226.50	22.07	0.63	27.5	1.2
TU-12-097	250.80	259.50	8.70	0.51	20.1	0.9
TU-12-097	270.80	280.47	9.67	0.33	16.8	0.7
TU-13-330	36.58	47.50	10.92	0.62	31.8	1.3
including	37.80	42.80	5.00	1.11	37.9	1.9
TU-13-330	62.00	96.25	34.25	0.16	11.2	0.4
including	65.50	67.00	1.50	0.51	34.0	1.2
TU-13-330	155.00	159.65	4.65	0.73	53.2	1.8
TU-13-330	172.60	192.00	19.40	0.16	11.9	0.4
TU-13-333	43.60	58.30	14.70	0.14	4.5	0.2
TU-13-333	87.00	89.50	2.50	0.37	27.1	0.9
TU-13-333	125.00	135.00	10.00	0.84	128.0	3.4
including	125.00	127.00	2.00	3.71	571.0	15.1
TU-13-333	152.00	206.00	54.00	0.62	54.5	1.7
including	152.00	153.00	1.00	7.33	545.5	18.2
including	172.75	175.50	2.75	1.41	95.6	3.3
including	194.00	202.00	8.00	0.93	106.5	3.1
TU-13-344	168.00	176.00	8.00	0.17	3.6	0.2
TU-13-344	183.80	233.50	49.70	0.36	9.0	0.5
including	183.80	212.35	28.55	0.50	11.4	0.7

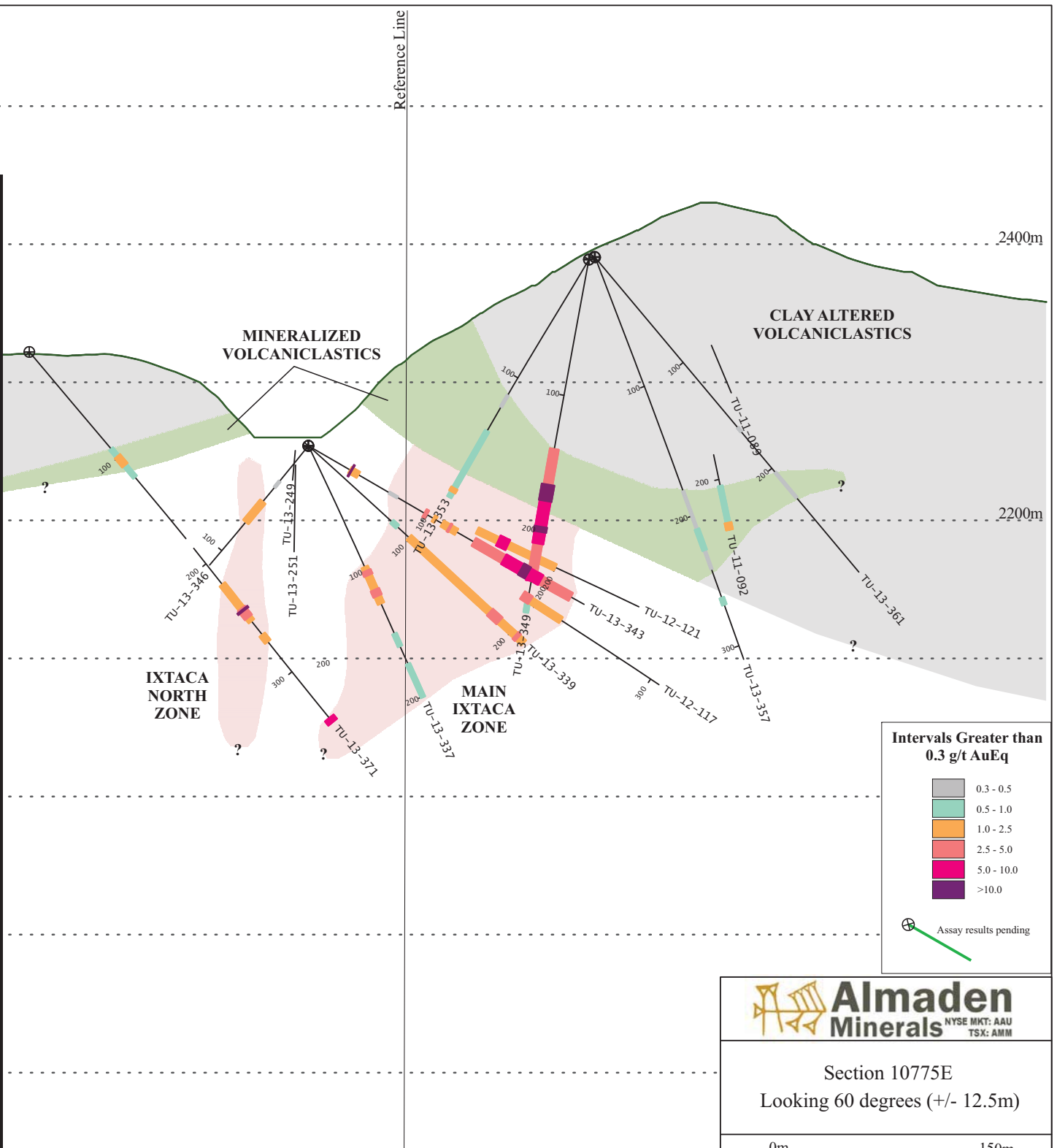
Gold Equivalent (AuEq) is calculated using silver to gold ratios of 50 to 1.

**Almaden Minerals**  
 NYSE MKT: AAU  
 TSX: AMM

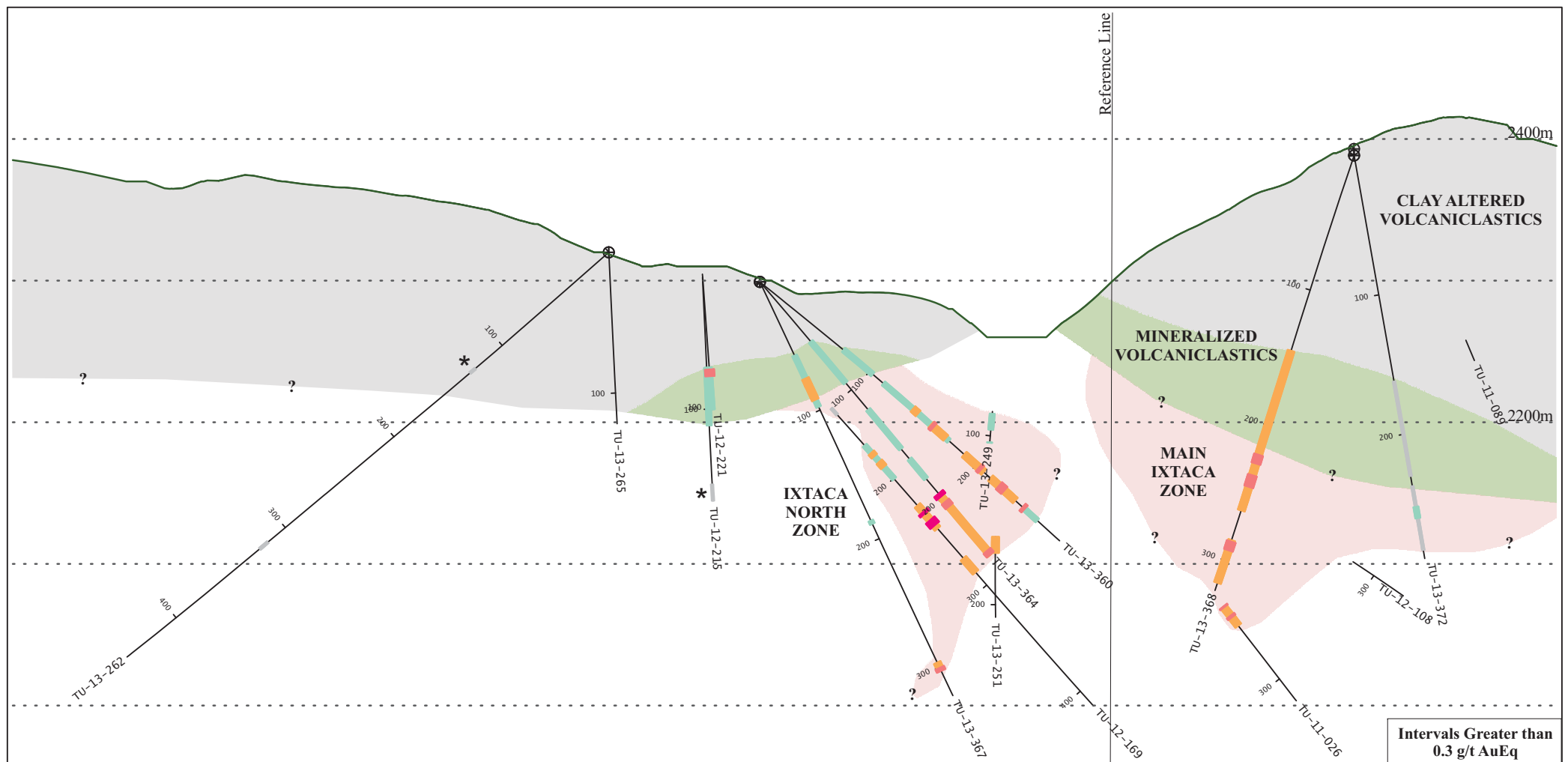
Section 10725E  
 Looking 60 degrees (+/- 12.5m)

0m 150m

Hole ID	From (m)	To (m)	Interval (m)	Gold (g/t)	Silver (g/t)	Gold Eq (g/t)
TU-13-337	97.00	126.00	29.00	0.62	44.3	1.5
including	100.00	103.50	3.50	1.46	141.4	4.3
including	115.00	120.00	5.00	1.27	74.4	2.8
TU-13-337	150.00	160.00	10.00	0.55	5.5	0.7
TU-13-337	174.00	200.56	26.56	0.24	11.8	0.5
TU-13-339	82.00	87.50	5.50	0.27	10.3	0.5
TU-13-339	99.00	243.00	144.00	0.52	40.5	1.3
including	164.90	167.50	2.60	0.65	53.0	1.7
including	170.00	173.50	3.50	0.79	45.7	1.7
including	179.00	188.50	9.50	2.08	78.0	3.6
including	204.20	206.70	2.50	1.43	90.9	3.3
including	219.50	227.60	8.10	1.04	183.0	4.7
including	222.00	225.50	3.50	1.73	374.4	9.2
including	231.25	233.75	2.50	1.63	118.0	4.0
TU-13-343	35.00	42.00	7.00	0.74	83.8	2.4
including	35.50	36.50	1.00	4.47	520.7	14.9
TU-13-343	67.80	75.00	7.20	0.19	8.2	0.4
TU-13-343	97.50	99.50	2.00	0.22	112.5	2.5
TU-13-343	105.00	107.10	2.10	0.16	43.1	1.0
TU-13-343	112.50	124.50	12.00	0.49	26.7	1.0
including	118.00	119.25	1.25	0.59	142.0	3.4
TU-13-343	139.00	220.00	81.00	1.49	106.6	3.6
including	164.10	195.00	30.90	3.38	230.8	8.0
including	164.10	168.40	4.30	3.55	143.6	6.4
including	178.50	184.50	6.00	9.95	896.2	27.9
including	192.80	195.00	2.20	2.96	59.0	4.1
TU-13-346	33.50	39.50	6.00	0.07	18.7	0.4
TU-13-346	53.00	72.54	19.54	0.51	22.6	1.0
TU-13-346	141.00	147.00	6.00	0.21	23.4	0.7
TU-13-346	191.00	195.00	4.00	0.03	33.6	0.7
TU-13-349	139.50	236.50	97.00	1.60	115.4	3.9
including	165.50	209.00	43.50	3.16	235.4	7.9
including	165.50	177.75	12.25	7.92	435.8	16.6
including	196.50	200.50	4.00	2.74	426.5	11.3
including	234.50	236.50	2.00	1.20	287.1	6.9
TU-13-349	247.50	259.69	12.19	0.27	11.2	0.5
TU-13-353	114.50	124.50	10.00	0.22	2.2	0.3
TU-13-353	144.50	199.64	55.14	0.35	9.2	0.5
including	192.10	195.30	3.20	1.31	42.3	2.2
TU-13-357	180.72	241.15	60.43	0.33	4.5	0.4
including	210.15	226.45	16.30	0.50	6.3	0.6
TU-13-357	263.00	268.50	5.50	0.51	4.5	0.6
TU-13-361	161.50	165.40	3.90	0.41	0.3	0.4
TU-13-361	203.75	227.95	24.20	0.18	5.0	0.3
TU-13-371	92.00	118.75	26.75	0.67	8.1	0.8
including	99.00	107.50	8.50	1.08	9.9	1.3
TU-13-371	219.00	253.00	34.00	0.29	40.8	1.1
including	241.30	249.50	8.20	0.86	142.8	3.7
including	242.30	243.80	1.50	3.25	573.4	14.7
TU-13-371	265.50	272.00	6.50	0.62	69.3	2.0
TU-13-371	343.00	346.86	3.86	0.41	294.2	6.3



Gold Equivalent (AuEq) is calculated using silver to gold ratios of 50 to 1.



Hole ID	From (m)	To (m)	Interval (m)	Gold (g/t)	Silver (g/t)	Gold Eq (g/t)
TU-13-262	125.00	130.00	5.00	0.21	0.6	0.2
TU-13-262	316.00	323.50	7.50	0.32	0.3	0.3
TU-13-360	76.25	103.02	26.77	0.45	8.6	0.6
TU-13-360	113.00	174.50	61.50	0.27	18.8	0.6
including	140.60	145.40	4.80	0.66	69.9	2.1
including	157.50	171.50	14.00	0.46	35.5	1.2
including	158.00	160.00	2.00	0.35	112.0	2.6
TU-13-360	189.00	207.50	18.50	0.16	41.1	1.0
including	203.00	205.00	2.00	0.44	170.7	3.9
TU-13-360	214.00	237.50	23.50	0.13	54.2	1.2
including	222.00	227.00	5.00	0.31	157.8	3.5
TU-13-360	244.50	258.50	14.00	0.08	31.4	0.7
including	244.50	246.40	1.90	0.08	170.6	3.5
TU-13-364	55.50	93.50	38.00	0.35	11.0	0.6
TU-13-364	118.40	154.50	36.10	0.27	13.3	0.5
TU-13-364	164.00	182.00	18.00	0.07	21.1	0.5
TU-13-364	195.90	252.37	56.47	0.14	50.6	1.1
including	195.90	198.50	2.60	0.29	261.4	5.5
including	203.30	207.50	4.20	0.37	127.7	2.9
including	248.80	252.37	3.57	0.31	229.5	4.9

Hole ID	From (m)	To (m)	Interval (m)	Gold (g/t)	Silver (g/t)	Gold Eq (g/t)
TU-13-367	57.50	97.50	40.00	0.41	12.0	0.6
including	75.50	92.00	16.50	0.55	23.6	1.0
including	75.50	80.50	5.00	0.86	11.1	1.1
TU-13-367	186.00	188.50	2.50	0.14	20.8	0.6
TU-13-367	296.70	303.10	6.40	0.69	33.4	1.4
including	300.80	303.10	2.30	1.54	74.4	3.0
TU-13-368	145.00	263.00	118.00	0.60	37.2	1.3
including	208.50	257.80	49.30	0.78	70.9	2.2
including	221.90	228.30	6.40	1.04	98.9	3.0
including	237.00	245.50	8.50	0.78	110.2	3.0
TU-13-368	285.10	316.75	31.65	0.67	46.2	1.6
including	286.10	292.50	6.40	1.31	131.5	3.9
TU-13-372	162.00	230.00	68.00	0.33	3.5	0.4
TU-13-372	237.00	283.00	46.00	0.28	6.9	0.4
including	252.00	260.00	8.00	0.52	14.1	0.8

**Intervals Greater than 0.3 g/t AuEq**

- 0.3 - 0.5
- 0.5 - 1.0
- 1.0 - 2.5
- 2.5 - 5.0
- 5.0 - 10.0
- >10.0

\* Denotes intervals less than 0.3 g/t AuEq

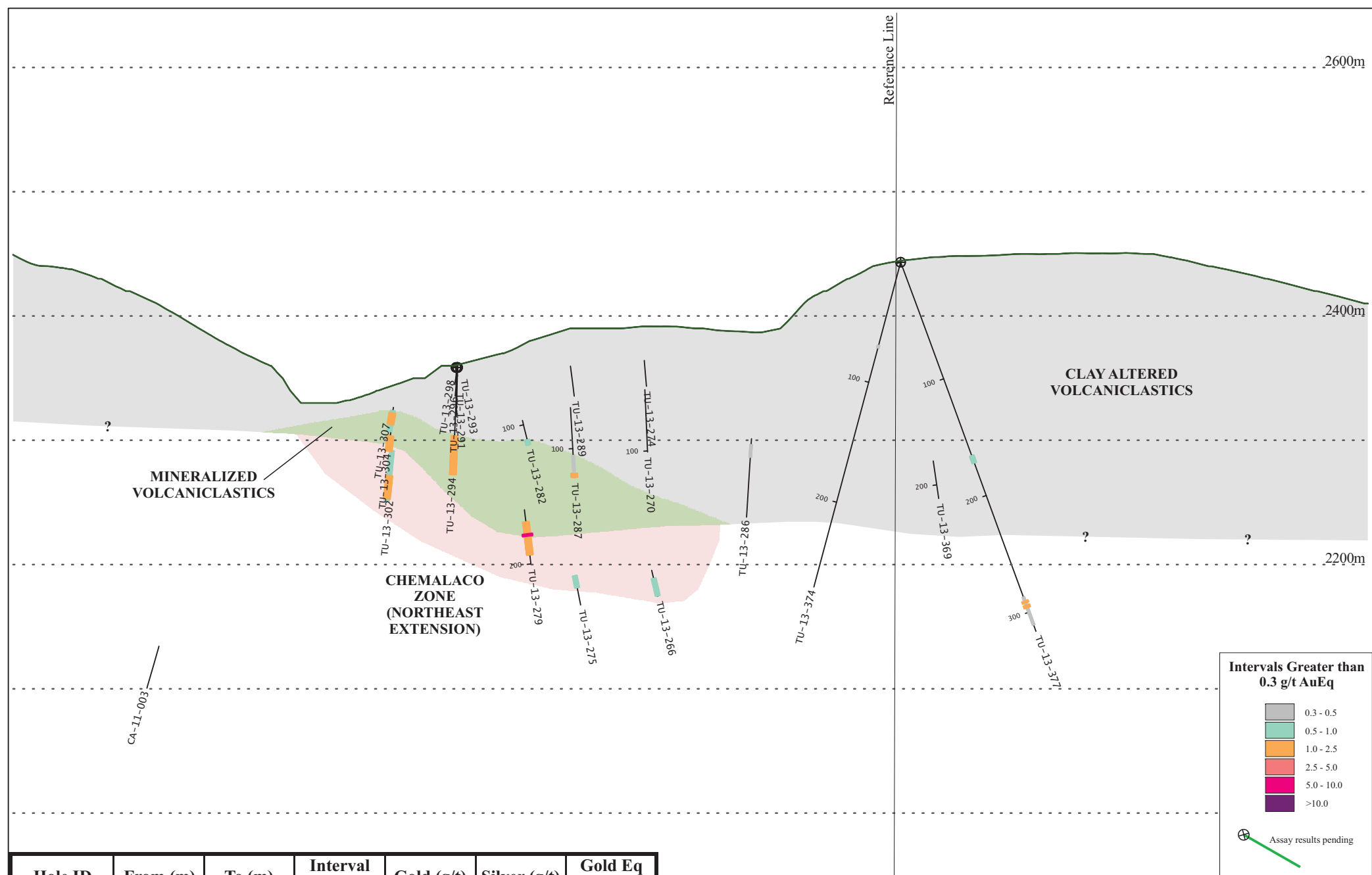
Assay results pending

**Almaden Minerals**  
NYSE MKT: AAU  
TSX: AMM

Section 10825E  
Looking 60 degrees (+/- 12.5m)

0m  150m

Gold Equivalent (AuEq) is calculated using silver to gold ratios of 50 to 1.



Hole ID	From (m)	To (m)	Interval (m)	Gold (g/t)	Silver (g/t)	Gold Eq (g/t)
TU-13-374	69.25	71.45	2.20	0.02	12.0	0.3
TU-13-377	166.00	172.00	6.00	0.06	30.4	0.7
TU-13-377	287.00	311.00	24.00	0.03	18.2	0.4
including	290.50	292.00	1.50	0.03	74.7	1.5
including	294.00	296.05	2.05	0.04	60.3	1.2

Gold Equivalent (AuEq) is calculated using silver to gold ratios of 50 to 1.

**Almaden Minerals**  
 NYSE MKT: AAU  
 TSX: AMM

Section 11350E  
 Looking 60 degrees (+/- 12.5m)

0m 150m